



DRILL STEM TEST REPORT

Prepared For: **F G Holl Oil Company**

9431 East Central Suite 100
Wichita, Kansas
67206+2583

ATTN: Rene Husted

Bell " B " #1-7

7/30S/13W Barber Co.

Start Date: 2012.02.14 @ 01:39:00

End Date: 2012.02.14 @ 00:00:00

Job Ticket #: 18837 DST #: 4

Superior Testers Enterprises LLC
PO Box 138 Great Bend KS 67530
1-800-792-6902

Printed: 2012.02.14 @ 19:13:59



DRILL STEM TEST REPORT

F G Holl Oil Company
 9431 East Central Suite 100
 Wichita, Kansas
 67206+2583
 ATTN: Rene Husted

7/30S/13W Barber Co.
Bell " B " #1-7
 Job Ticket: 18837 **DST#: 4**
 Test Start: 2012.02.14 @ 01:39:00

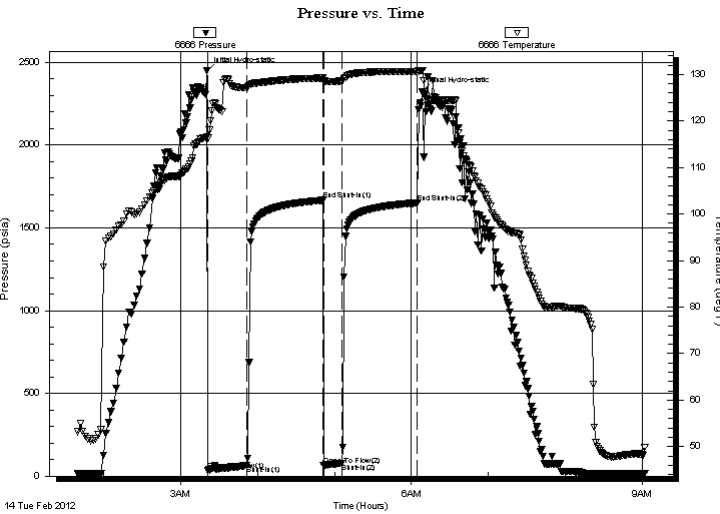
GENERAL INFORMATION:

Formation: **Arbuckle**
 Deviated: No Whipstock: ft (KB)
 Time Tool Opened: 00:00:00
 Time Test Ended: 00:00:00
 Test Type: Conventional Bottom Hole (Initial)
 Tester: Dylan E Ellis
 Unit No: 3345/Great Bend/142
Interval: 4655.00 ft (KB) To 4765.00 ft (KB) (TVD)
 Reference Elevations: 1922.00 ft (KB)
 Total Depth: 4765.00 ft (KB) (TVD) 1911.00 ft (CF)
 Hole Diameter: 7.88 inches Hole Condition: Fair KB to GR/CF: 11.00 ft

Serial #: 6666 Outside

Press @ Run Depth: 1650.81 psia @ 4762.00 ft (KB) Capacity: 5000.00 psia
 Start Date: 2012.02.14 End Date: 2012.02.14 Last Calib.: 2012.02.14
 Start Time: 01:39:00 End Time: 09:01:30 Time On Btm: 2012.02.14 @ 03:20:30
 Time Off Btm: 2012.02.14 @ 06:08:00

TEST COMMENT: 1ST Opening 30 Minutes w eak building blow /blow blew 6 inches into bucket of w ater
 1ST Shut-In 60 Minutes no blow back
 2ND Opening 15 Minutes very very w eak surface blow /blow blew 0.50 inches into w ater
 2ND Shut-In 60 Minutes no blow back



PRESSURE SUMMARY

Time (Min.)	Pressure (psia)	Temp (deg F)	Annotation
0	2446.21	116.49	Initial Hydro-static
1	34.90	116.27	Open To Flow (1)
31	63.79	127.22	Shut-In(1)
91	1666.51	129.19	End Shut-In(1)
92	65.44	128.57	Open To Flow (2)
105	78.48	128.56	Shut-In(2)
164	1650.81	130.62	End Shut-In(2)
168	2324.00	130.84	Final Hydro-static

Recovery

Length (ft)	Description	Volume (bbl)
105.00	very light Oil cut Muddy Water	1.47
0.00	2%Oil 63%Mud 35%Water	0.00
0.00	Chlorides w ere 55,000.0	0.00
0.00	Resistivity w as .20 @ 84 degrees	0.00

Gas Rates

Choke (inches)	Pressure (psia)	Gas Rate (Mcf/d)



DRILL STEM TEST REPORT

F G Holl Oil Company
 9431 East Central Suite 100
 Wichita, Kansas
 67206+2583
 ATTN: Rene Husted

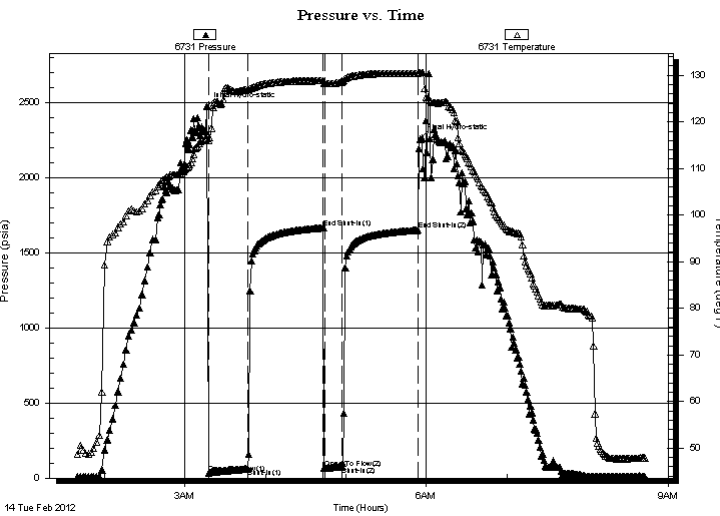
7/30S/13W Barber Co.
Bell " B " #1-7
 Job Ticket: 18837 **DST#: 4**
 Test Start: 2012.02.14 @ 01:39:00

GENERAL INFORMATION:

Formation: **Arbuckle**
 Deviated: No Whipstock: ft (KB)
 Test Type: Conventional Bottom Hole (Initial)
 Time Tool Opened: 00:00:00
 Tester: Dylan E Ellis
 Time Test Ended: 00:00:00
 Unit No: 3345/Great Bend/142
Interval: 4655.00 ft (KB) To 4765.00 ft (KB) (TVD)
 Reference Elevations: 1922.00 ft (KB)
 Total Depth: 4765.00 ft (KB) (TVD) 1911.00 ft (CF)
 Hole Diameter: 7.88 inches Hole Condition: Fair KB to GR/CF: 11.00 ft

Serial #: 6731 Inside
 Press @ Run Depth: 1649.98 psia @ 4761.00 ft (KB) Capacity: 5000.00 psia
 Start Date: 2012.02.14 End Date: 2012.02.14 Last Calib.: 2012.02.14
 Start Time: 01:39:00 End Time: 08:43:00 Time On Btm: 2012.02.14 @ 03:16:30
 Time Off Btm: 2012.02.14 @ 05:55:00

TEST COMMENT: 1ST Opening 30 Minutes w eak building blow /blow blew 6 inches into bucket of w ater
 1ST Shut-In 60 Minutes no blow back
 2ND Opening 15 Minutes very very w eak surface blow /blow blew 0.50 inches into w ater
 2ND Shut-In 60 Minutes no blow back



PRESSURE SUMMARY

Time (Min.)	Pressure (psia)	Temp (deg F)	Annotation
0	2469.71	116.49	Initial Hydro-static
1	35.26	116.11	Open To Flow (1)
30	63.86	127.01	Shut-In(1)
87	1665.44	128.83	End Shut-In(1)
88	64.93	128.27	Open To Flow (2)
101	77.90	128.57	Shut-In(2)
157	1649.98	130.40	End Shut-In(2)
159	2255.68	130.60	Final Hydro-static

Recovery

Length (ft)	Description	Volume (bbl)
105.00	very light Oil cut Muddy Water	1.47
0.00	2%Oil 63%Mud 35%Water	0.00
0.00	Chlorides w ere 55,000.0	0.00
0.00	Resistivity w as .20 @ 84 degrees	0.00

Gas Rates

Choke (inches)	Pressure (psia)	Gas Rate (Mcf/d)



DRILL STEM TEST REPORT

TOOL DIAGRAM

F G Holl Oil Company

7/30S/13W Barber Co.

9431 East Central Suite 100
 Wichita, Kansas
 67206+2583
 ATTN: Rene Husted

Bell " B " #1-7

Job Ticket: 18837

DST#: 4

Test Start: 2012.02.14 @ 01:39:00

Tool Information

Drill Pipe:	Length: 4736.00 ft	Diameter: 3.80 inches	Volume: 66.43 bbl	Tool Weight: 2000.00 lb
Heavy Wt. Pipe:	Length: 0.00 ft	Diameter: 0.00 inches	Volume: 0.00 bbl	Weight set on Packer: 20000.00 lb
Drill Collar:	Length: 0.00 ft	Diameter: 2.25 inches	Volume: 0.00 bbl	Weight to Pull Loose: 55000.00 lb
			<u>Total Volume: 66.43 bbl</u>	Tool Chased 4.00 ft
Drill Pipe Above KB:	9.00 ft			String Weight: Initial 60000.00 lb
Depth to Top Packer:	4755.00 ft			Final 60000.00 lb
Depth to Bottom Packer:	ft			
Interval between Packers:	10.00 ft			
Tool Length:	38.00 ft			
Number of Packers:	2	Diameter: 6.75 inches		

Tool Comments: The tool was dragging up into the 9th stand coming out of the hole. We pulled 110,00 on it to the max for it to finally give a little. When we set the tool on bottom the tool set, then it slide about 3-4 feet.

Tool Description	Length (ft)	Serial No.	Position	Depth (ft)	Accum. Lengths
Shut-In Tool	5.00			4732.00	
Hydraulic Tool	5.00			4737.00	
Jars	6.00			4743.00	
Safety Joint	2.00			4745.00	
Packer	5.00			4750.00	28.00 Bottom Of Top Packer
Packer	5.00			4755.00	
Anchor	5.00			4760.00	
Recorder	1.00	6731	Inside	4761.00	
Recorder	1.00	6666	Outside	4762.00	
Bull Plug	3.00			4765.00	10.00 Bottom Packers & Anchor
Total Tool Length:	38.00				



DRILL STEM TEST REPORT

FLUID SUMMARY

F G Holl Oil Company

7/30S/13W Barber Co.

9431 East Central Suite 100
 Wichita, Kansas
 67206+2583
 ATTN: Rene Husted

Bell " B " #1-7

Job Ticket: 18837

DST#: 4

Test Start: 2012.02.14 @ 01:39:00

Mud and Cushion Information

Mud Type: Gel Chem
 Mud Weight: 9.00 lb/gal
 Viscosity: 60.00 sec/qt
 Water Loss: 8.80 in³
 Resistivity: ohm.m
 Salinity: 4000.00 ppm
 Filter Cake: 1.00 inches

Cushion Type:
 Cushion Length: ft
 Cushion Volume: bbl
 Gas Cushion Type:
 Gas Cushion Pressure: psia

Oil API: deg API
 Water Salinity: ppm

Recovery Information

Recovery Table

Length ft	Description	Volume bbl
105.00	very light Oil cut Muddy Water	1.473
0.00	2%Oil 63%Mud 35%Water	0.000
0.00	Chlorides were 55,000.0	0.000
0.00	Resistivity was .20 @ 84 degrees	0.000

Total Length: 105.00 ft Total Volume: 1.473 bbl

Num Fluid Samples: 0 Num Gas Bombs: 0 Serial #:

Laboratory Name: Laboratory Location:

Recovery Comments: Left half of the bottom packer in the hole.

Pressure vs. Time

