



DRILL STEM TEST REPORT

Prepared For: **FIML Natural Resources, LLC**

410 17th. ST STE 900
Denver CO 80202

ATTN: Jim Musgrove

Spitzer #3-6

6-19-31 Scott,KS

Start Date: 2012.01.18 @ 16:44:15

End Date: 2012.01.19 @ 00:02:15

Job Ticket #: 44916 DST #: 1

Trilobite Testing, Inc
PO Box 362 Hays, KS 67601
ph: 785-625-4778 fax: 785-625-5620

Printed: 2012.01.26 @ 08:36:33



**TRILOBITE
TESTING, INC.**

DRILL STEM TEST REPORT

FIML Natural Resources, LLC

6-19-31 Scott,KS

410 17th. ST STE 900
Denver CO 80202

Spitzer #3-6

Job Ticket: 44916

DST#: 1

ATTN: Jim Musgrove

Test Start: 2012.01.18 @ 16:44:15

GENERAL INFORMATION:

Formation: "J"
 Deviated: No Whipstock: ft (KB)
 Test Type: Conventional Bottom Hole (Initial)
 Time Tool Opened: 19:07:45
 Tester: Mike Roberts
 Time Test Ended: 00:02:15
 Unit No: 48
 Interval: **4226.00 ft (KB) To 4266.00 ft (KB) (TVD)**
 Reference Elevations: 2981.00 ft (KB)
 Total Depth: 4266.00 ft (KB) (TVD)
 2971.00 ft (CF)
 Hole Diameter: 7.88 inches
 Hole Condition: Fair
 KB to GR/CF: 10.00 ft

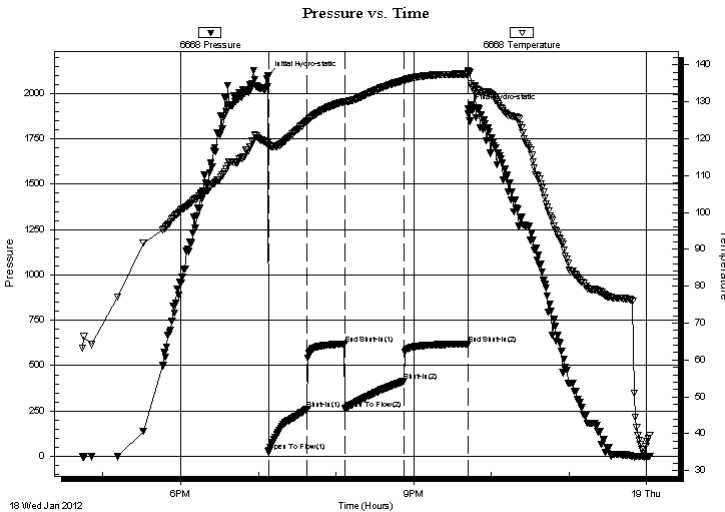
Serial #: 6668

Outside

Press @ Run Depth: 413.55 psig @ 4228.00 ft (KB) Capacity: 8000.00 psig
 Start Date: 2012.01.18 End Date: 2012.01.19 Last Calib.: 2012.01.19
 Start Time: 16:44:15 End Time: 00:02:15 Time On Btm: 2012.01.18 @ 19:07:30
 Time Off Btm: 2012.01.18 @ 21:42:00

TEST COMMENT: IF:BOB in 9 min.
 IS:No return blow
 FF:BOB in 9 min.
 FS:No return blow

PRESSURE SUMMARY



Time (Min.)	Pressure (psig)	Temp (deg F)	Annotation
0	2095.56	118.93	Initial Hydro-static
1	25.27	117.76	Open To Flow (1)
31	258.47	124.68	Shut-In(1)
59	619.58	129.99	End Shut-In(1)
60	261.66	129.94	Open To Flow (2)
105	413.55	135.71	Shut-In(2)
155	619.28	137.41	End Shut-In(2)
155	1917.66	138.46	Final Hydro-static

Recovery

Length (ft)	Description	Volume (bbl)
662.00	sw 100% sw	5.72

Gas Rates

Choke (inches)	Pressure (psig)	Gas Rate (Mcf/d)



**TRILOBITE
TESTING, INC.**

DRILL STEM TEST REPORT

TOOL DIAGRAM

FIML Natural Resources, LLC

6-19-31 Scott,KS

410 17th. ST STE 900
Denver CO 80202

Spitzer #3-6

Job Ticket: 44916

DST#: 1

ATTN: Jim Musgrove

Test Start: 2012.01.18 @ 16:44:15

Tool Information

Drill Pipe:	Length: 3847.00 ft	Diameter: 3.80 inches	Volume: 53.96 bbl	Tool Weight: 1500.00 lb
Heavy Wt. Pipe:	Length: 0.00 ft	Diameter: 0.00 inches	Volume: 0.00 bbl	Weight set on Packer: 25000.00 lb
Drill Collar:	Length: 392.00 ft	Diameter: 2.25 inches	Volume: 1.93 bbl	Weight to Pull Loose: 90000.00 lb
			<u>Total Volume: 55.89 bbl</u>	Tool Chased 0.00 ft
Drill Pipe Above KB:	33.00 ft			String Weight: Initial 70000.00 lb
Depth to Top Packer:	4226.00 ft			Final 72000.00 lb
Depth to Bottom Packer:	ft			
Interval between Packers:	40.00 ft			
Tool Length:	60.00 ft			
Number of Packers:	2	Diameter: 6.75 inches		

Tool Comments:

Tool Description	Length (ft)	Serial No.	Position	Depth (ft)	Accum. Lengths
------------------	-------------	------------	----------	------------	----------------

Change Over Sub	1.00			4207.00	
Shut In Tool	5.00			4212.00	
Hydraulic tool	5.00			4217.00	
Packer	5.00			4222.00	20.00 Bottom Of Top Packer
Packer	4.00			4226.00	
Stubb	1.00			4227.00	
Perforations	1.00			4228.00	
Recorder	0.00	8358	Inside	4228.00	
Recorder	0.00	6668	Outside	4228.00	
Change Over Sub	1.00			4229.00	
Drill Pipe	31.00			4260.00	
Change Over Sub	1.00			4261.00	
Bullnose	5.00			4266.00	40.00 Bottom Packers & Anchor

Total Tool Length: 60.00



**TRILOBITE
TESTING, INC.**

DRILL STEM TEST REPORT

FLUID SUMMARY

FIML Natural Resources, LLC

6-19-31 Scott,KS

410 17th. ST STE 900
Denver CO 80202

Spitzer #3-6

Job Ticket: 44916

DST#: 1

ATTN: Jim Musgrove

Test Start: 2012.01.18 @ 16:44:15

Mud and Cushion Information

Mud Type: Gel Chem

Cushion Type:

Oil API:

0 deg API

Mud Weight: 9.00 lb/gal

Cushion Length:

ft

Water Salinity:

25000 ppm

Viscosity: 50.00 sec/qt

Cushion Volume:

bbl

Water Loss: 6.76 in³

Gas Cushion Type:

Resistivity: 0.00 ohm.m

Gas Cushion Pressure:

psig

Salinity: 1400.00 ppm

Filter Cake: 1.00 inches

Recovery Information

Recovery Table

Length ft	Description	Volume bbl
662.00	sw 100% sw	5.715

Total Length: 662.00 ft Total Volume: 5.715 bbl

Num Fluid Samples: 0

Num Gas Bombs: 0

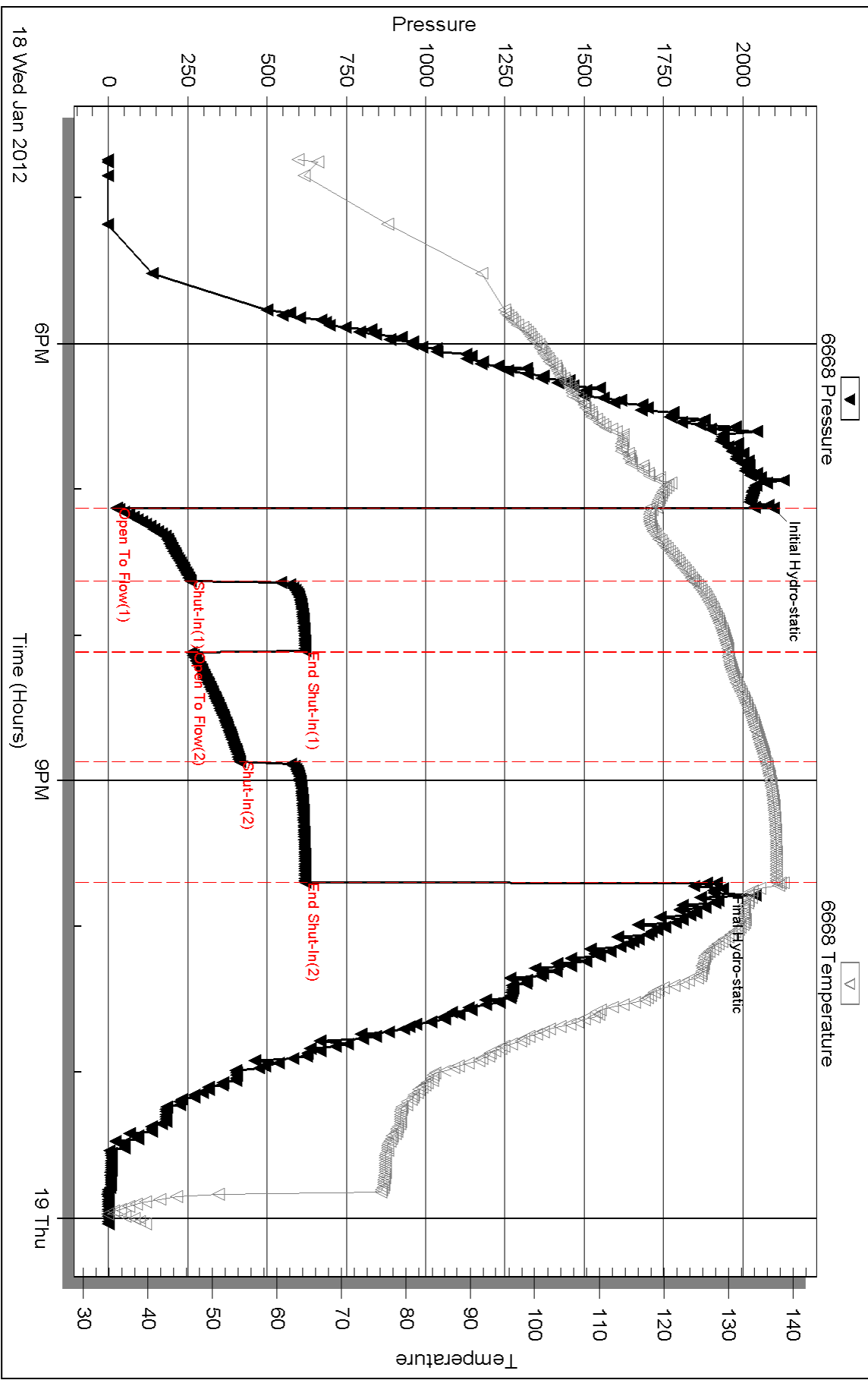
Serial #:

Laboratory Name:

Laboratory Location:

Recovery Comments: RW=.543@36.9*=25,000 ppm

Pressure vs. Time



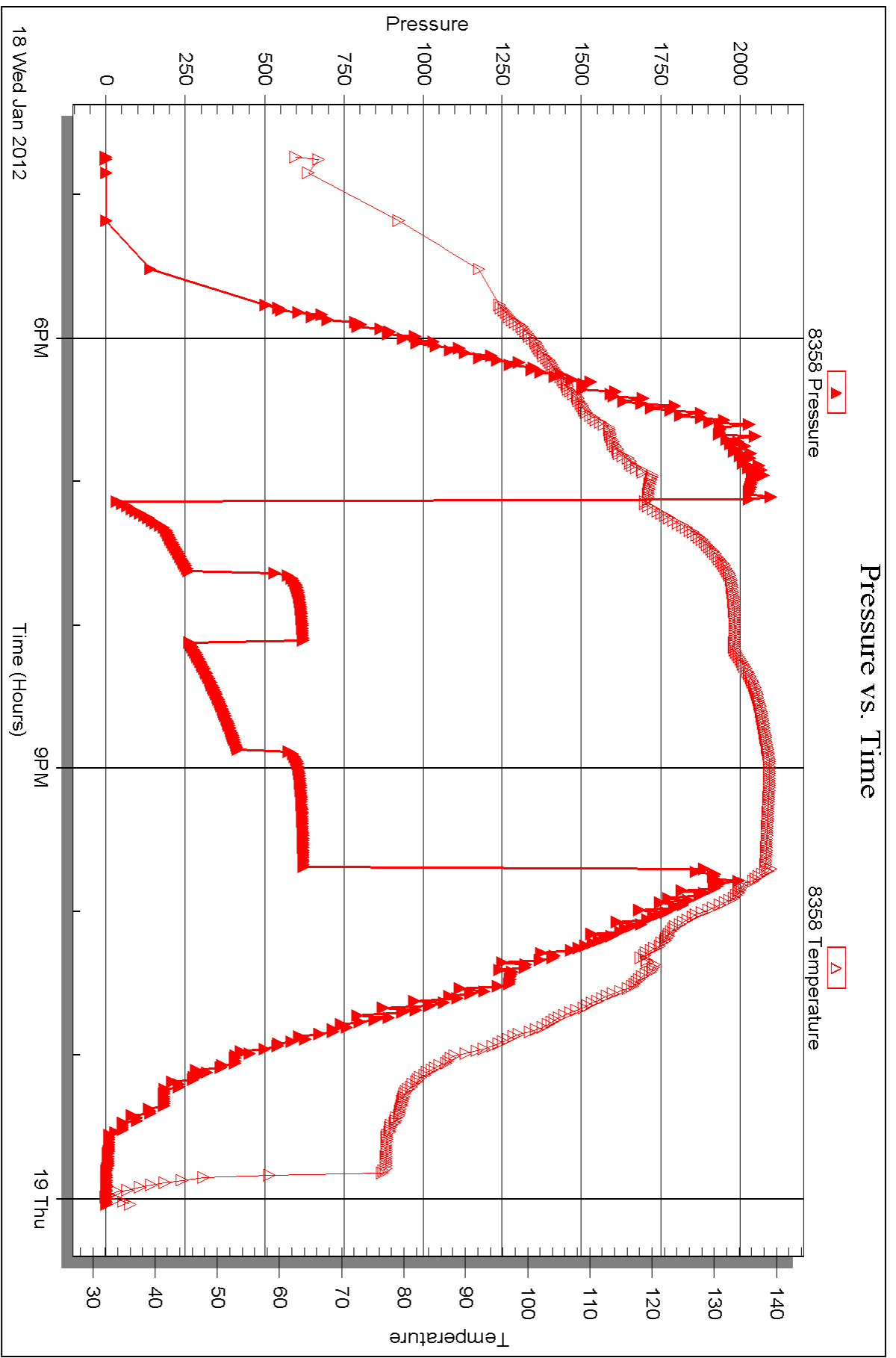
Serial #: 8358

Inside

FIML Natural Resources, LLC

Spitzer #3-6

DST Test Number: 1



Triobite Testing, Inc

Ref. No: 44916

Printed: 2012.01.26 @ 08:36:35



DRILL STEM TEST REPORT

Prepared For: **FIML Natural Resources, LLC**

410 17th. ST STE 900
Denver CO 80202

ATTN: Jim Musgrove

Spitzer #3-6

6-19-31 Scott,KS

Start Date: 2012.01.19 @ 09:57:15

End Date: 2012.01.19 @ 17:14:45

Job Ticket #: 44917 DST #: 2

Trilobite Testing, Inc
PO Box 362 Hays, KS 67601
ph: 785-625-4778 fax: 785-625-5620

Printed: 2012.01.26 @ 08:35:26



TRILOBITE TESTING, INC.

DRILL STEM TEST REPORT

FIML Natural Resources, LLC

6-19-31 Scott, KS

410 17th. ST STE 900
Denver CO 80202

Spitzer #3-6

Job Ticket: 44917

DST#: 2

ATTN: Jim Musgrove

Test Start: 2012.01.19 @ 09:57:15

GENERAL INFORMATION:

Formation: "K"
 Deviated: No Whipstock: ft (KB)
 Test Type: Conventional Bottom Hole (Reset)
 Time Tool Opened: 11:38:45
 Tester: Mike Roberts
 Time Test Ended: 17:14:45
 Unit No: 48
 Interval: **4271.00 ft (KB) To 4326.00 ft (KB) (TVD)**
 Reference Elevations: 2981.00 ft (KB)
 Total Depth: 4326.00 ft (KB) (TVD)
 2971.00 ft (CF)
 Hole Diameter: 7.88 inches
 Hole Condition: Fair
 KB to GR/CF: 10.00 ft

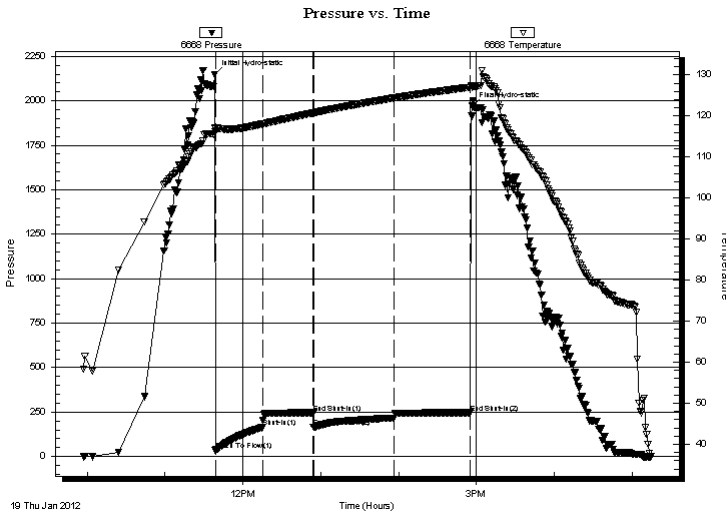
Serial #: 6668

Outside

Press @ Run Depth: 216.53 psig @ 4277.00 ft (KB) Capacity: 8000.00 psig
 Start Date: 2012.01.19 End Date: 2012.01.19 Last Calib.: 2012.01.19
 Start Time: 09:57:15 End Time: 17:14:45 Time On Btm: 2012.01.19 @ 11:38:30
 Time Off Btm: 2012.01.19 @ 14:56:30

TEST COMMENT: IF: Built to 9" blow
 IS: No return blow
 FF: Built to 5" blow
 FS: No return blow

PRESSURE SUMMARY



Time (Min.)	Pressure (psig)	Temp (deg F)	Annotation
0	2147.56	117.10	Initial Hydro-static
1	32.81	116.16	Open To Flow (1)
37	162.74	118.05	Shut-In(1)
76	245.78	120.78	End Shut-In(1)
76	165.02	120.77	Open To Flow (2)
138	216.53	124.39	Shut-In(2)
197	246.00	127.02	End Shut-In(2)
198	1969.30	127.03	Final Hydro-static

Recovery

Length (ft)	Description	Volume (bbl)
372.00	mcw with oil spots 20% m 80% w	1.83
10.00	w cm 20% w 80% m	0.14

* Recovery from multiple tests

Gas Rates

Choke (inches)	Pressure (psig)	Gas Rate (Mcf/d)



**TRILOBITE
TESTING, INC.**

DRILL STEM TEST REPORT

TOOL DIAGRAM

FIML Natural Resources, LLC

6-19-31 Scott,KS

410 17th. ST STE 900
Denver CO 80202

Spitzer #3-6

Job Ticket: 44917

DST#: 2

ATTN: Jim Musgrove

Test Start: 2012.01.19 @ 09:57:15

Tool Information

Drill Pipe:	Length: 3901.00 ft	Diameter: 3.80 inches	Volume: 54.72 bbl	Tool Weight: 1500.00 lb
Heavy Wt. Pipe:	Length: 0.00 ft	Diameter: 0.00 inches	Volume: 0.00 bbl	Weight set on Packer: 20000.00 lb
Drill Collar:	Length: 372.00 ft	Diameter: 2.25 inches	Volume: 1.83 bbl	Weight to Pull Loose: 80000.00 lb
			<u>Total Volume: 56.55 bbl</u>	Tool Chased 0.00 ft
Drill Pipe Above KB:	22.00 ft			String Weight: Initial 70000.00 lb
Depth to Top Packer:	4271.00 ft			Final 71000.00 lb
Depth to Bottom Packer:	ft			
Interval between Packers:	55.00 ft			
Tool Length:	75.00 ft			
Number of Packers:	2	Diameter: 6.75 inches		

Tool Comments:

Tool Description

Tool Description	Length (ft)	Serial No.	Position	Depth (ft)	Accum. Lengths
Change Over Sub	1.00			4252.00	
Shut In Tool	5.00			4257.00	
Hydraulic tool	5.00			4262.00	
Packer	5.00			4267.00	20.00 Bottom Of Top Packer
Packer	4.00			4271.00	
Stubb	1.00			4272.00	
Perforations	5.00			4277.00	
Recorder	0.00	8358	Inside	4277.00	
Recorder	0.00	6668	Outside	4277.00	
Change Over Sub	1.00			4278.00	
Drill Pipe	32.00			4310.00	
Change Over Sub	1.00			4311.00	
Perforations	10.00			4321.00	
Bullnose	5.00			4326.00	55.00 Bottom Packers & Anchor

Total Tool Length: 75.00



**TRILOBITE
TESTING, INC.**

DRILL STEM TEST REPORT

FLUID SUMMARY

FIML Natural Resources, LLC

6-19-31 Scott,KS

410 17th. ST STE 900
Denver CO 80202

Spitzer #3-6

Job Ticket: 44917

DST#: 2

ATTN: Jim Musgrove

Test Start: 2012.01.19 @ 09:57:15

Mud and Cushion Information

Mud Type: Gel Chem

Cushion Type:

Oil API:

0 deg API

Mud Weight: 9.00 lb/gal

Cushion Length:

ft

Water Salinity:

25000 ppm

Viscosity: 50.00 sec/qt

Cushion Volume:

bbbl

Water Loss: 6.76 in³

Gas Cushion Type:

Resistivity: 0.00 ohm.m

Gas Cushion Pressure:

psig

Salinity: 1400.00 ppm

Filter Cake: 1.00 inches

Recovery Information

Recovery Table

Length ft	Description	Volume bbbl
372.00	mcw with oil spots 20% m 80% w	1.829
10.00	wcm 20% w 80% m	0.140

Total Length: 382.00 ft Total Volume: 1.969 bbl

Num Fluid Samples: 0

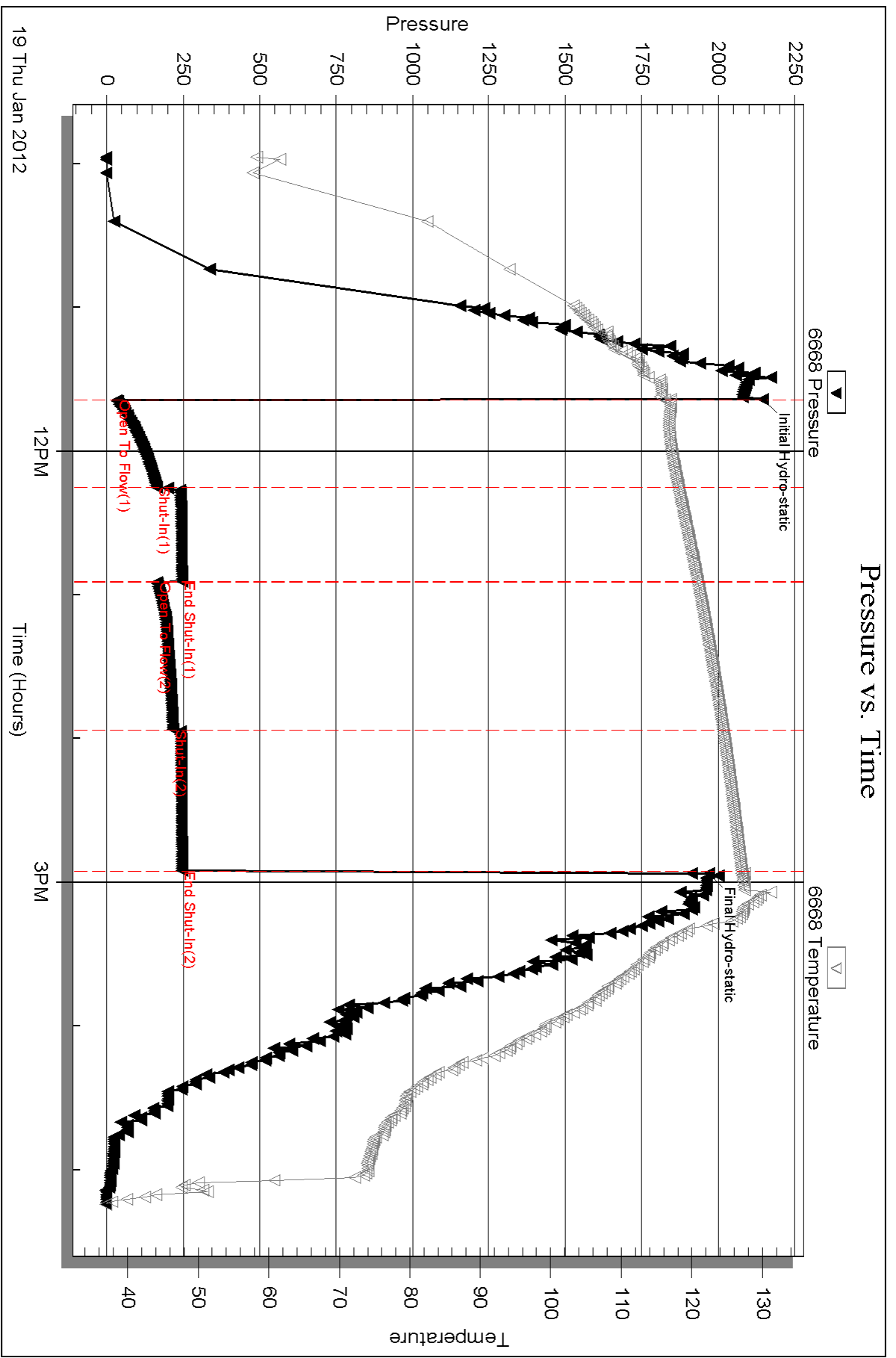
Num Gas Bombs: 0

Serial #:

Laboratory Name:

Laboratory Location:

Recovery Comments: RW= .537 @ 38.2=25,000 ppm



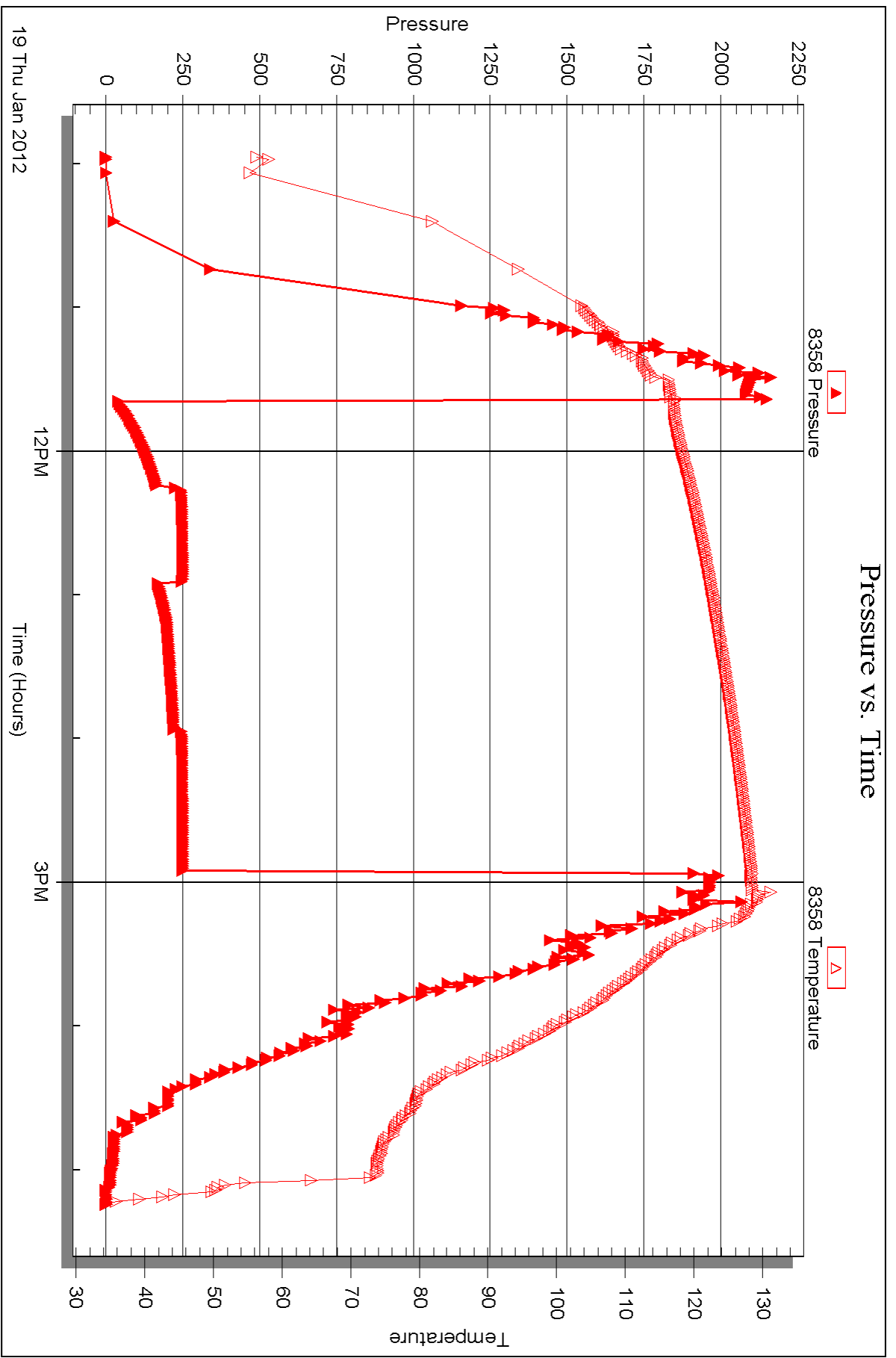
Serial #: 8358

Inside

FIML Natural Resources, LLC

Spitzer #3-6

DST Test Number: 2





DRILL STEM TEST REPORT

Prepared For: **FIML Natural Resources, LLC**

410 17th. ST STE 900
Denver CO 80202

ATTN: Jim Musgrove

Spitzer #3-6

6-19-31 Scott,KS

Start Date: 2012.01.20 @ 09:15:15

End Date: 2012.01.20 @ 15:40:45

Job Ticket #: 44918 DST #: 3

Trilobite Testing, Inc
PO Box 362 Hays, KS 67601
ph: 785-625-4778 fax: 785-625-5620

Printed: 2012.01.26 @ 08:34:42



TRILOBITE TESTING, INC.

DRILL STEM TEST REPORT

FIML Natural Resources, LLC

6-19-31 Scott, KS

410 17th. ST STE 900
Denver CO 80202

Spitzer #3-6

Job Ticket: 44918

DST#: 3

ATTN: Jim Musgrove

Test Start: 2012.01.20 @ 09:15:15

GENERAL INFORMATION:

Formation: **Marmaton A-B-C**

Deviated: No Whipstock: ft (KB)

Time Tool Opened: 11:16:30

Time Test Ended: 15:40:45

Test Type: Conventional Bottom Hole (Reset)

Tester: Mike Roberts

Unit No: 48

Interval: 4321.00 ft (KB) To 4411.00 ft (KB) (TVD)

Reference Elevations: 2981.00 ft (KB)

Total Depth: 4411.00 ft (KB) (TVD)

2971.00 ft (CF)

Hole Diameter: 7.88 inches Hole Condition: Fair

KB to GR/CF: 10.00 ft

Serial #: 6668 Outside

Press @ Run Depth: 286.14 psig @ 4327.00 ft (KB)

Capacity: 8000.00 psig

Start Date: 2012.01.20

End Date: 2012.01.20

Last Calib.: 2012.01.20

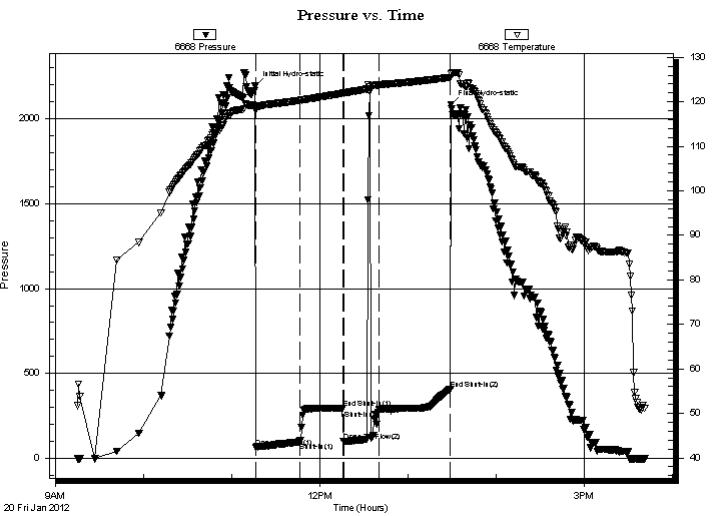
Start Time: 09:15:15

End Time: 15:40:45

Time On Btm: 2012.01.20 @ 11:16:15

Time Off Btm: 2012.01.20 @ 13:29:15

TEST COMMENT: IF: Built to 11/2" blow
IS: No return blow
FF: No blow -- flushed tool- no blow
FS: No return blow



PRESSURE SUMMARY

Time (Min.)	Pressure (psig)	Temp (deg F)	Annotation
0	2192.84	119.08	Initial Hydro-static
1	66.44	118.08	Open To Flow (1)
31	97.81	120.33	Shut-In (1)
60	296.57	121.92	End Shut-In (1)
60	99.44	121.93	Open To Flow (2)
84	286.14	123.80	Shut-In (2)
133	406.24	125.50	End Shut-In (2)
133	2082.99	126.36	Final Hydro-static

Recovery

Length (ft)	Description	Volume (bbl)
90.00	m 100% m	0.44

* Recovery from multiple tests

Gas Rates

Choke (inches)	Pressure (psig)	Gas Rate (Mcf/d)



**TRILOBITE
TESTING, INC.**

DRILL STEM TEST REPORT

TOOL DIAGRAM

FIML Natural Resources, LLC

6-19-31 Scott,KS

410 17th. ST STE 900
Denver CO 80202

Spitzer #3-6

Job Ticket: 44918

DST#: 3

ATTN: Jim Musgrove

Test Start: 2012.01.20 @ 09:15:15

Tool Information

Drill Pipe:	Length: 3933.00 ft	Diameter: 3.80 inches	Volume: 55.17 bbl	Tool Weight: 1500.00 lb
Heavy Wt. Pipe:	Length: 0.00 ft	Diameter: 0.00 inches	Volume: 0.00 bbl	Weight set on Packer: 20000.00 lb
Drill Collar:	Length: 372.00 ft	Diameter: 2.25 inches	Volume: 1.83 bbl	Weight to Pull Loose: 80000.00 lb
			<u>Total Volume: 57.00 bbl</u>	Tool Chased 0.00 ft
Drill Pipe Above KB:	4.00 ft			String Weight: Initial 70000.00 lb
Depth to Top Packer:	4321.00 ft			Final 72000.00 lb
Depth to Bottom Packer:	ft			
Interval between Packers:	90.00 ft			
Tool Length:	110.00 ft			
Number of Packers:	2	Diameter: 6.75 inches		

Tool Comments:

Tool Description

Tool Description	Length (ft)	Serial No.	Position	Depth (ft)	Accum. Lengths
Change Over Sub	1.00			4302.00	
Shut In Tool	5.00			4307.00	
Hydraulic tool	5.00			4312.00	
Packer	5.00			4317.00	20.00 Bottom Of Top Packer
Packer	4.00			4321.00	
Stubb	1.00			4322.00	
Perforations	5.00			4327.00	
Recorder	0.00	8358	Inside	4327.00	
Recorder	0.00	6668	Outside	4327.00	
Change Over Sub	1.00			4328.00	
Drill Pipe	63.00			4391.00	
Change Over Sub	1.00			4392.00	
Perforations	14.00			4406.00	
Bullnose	5.00			4411.00	90.00 Bottom Packers & Anchor

Total Tool Length: 110.00



**TRILOBITE
TESTING, INC.**

DRILL STEM TEST REPORT

FLUID SUMMARY

FIML Natural Resources, LLC

6-19-31 Scott,KS

410 17th. ST STE 900
Denver CO 80202

Spitzer #3-6

Job Ticket: 44918

DST#: 3

ATTN: Jim Musgrove

Test Start: 2012.01.20 @ 09:15:15

Mud and Cushion Information

Mud Type: Gel Chem

Cushion Type:

Oil API:

0 deg API

Mud Weight: 9.00 lb/gal

Cushion Length:

ft

Water Salinity:

0 ppm

Viscosity: 50.00 sec/qt

Cushion Volume:

bbbl

Water Loss: 6.77 in³

Gas Cushion Type:

Resistivity: 0.00 ohm.m

Gas Cushion Pressure:

psig

Salinity: 1800.00 ppm

Filter Cake: 1.00 inches

Recovery Information

Recovery Table

Length ft	Description	Volume bbl
90.00	m 100% m	0.443

Total Length: 90.00 ft Total Volume: 0.443 bbl

Num Fluid Samples: 0

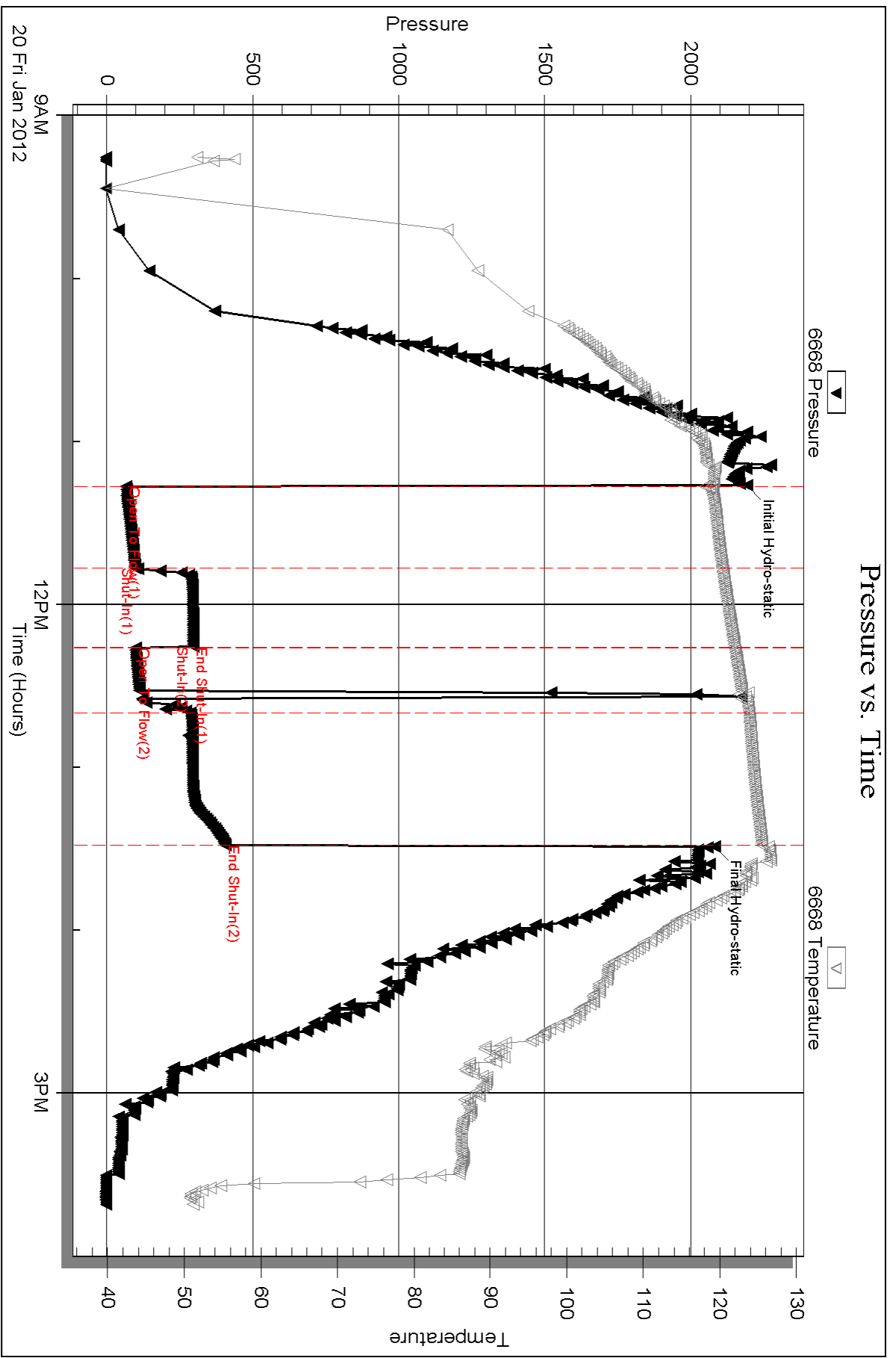
Num Gas Bombs: 0

Serial #:

Laboratory Name:

Laboratory Location:

Recovery Comments:



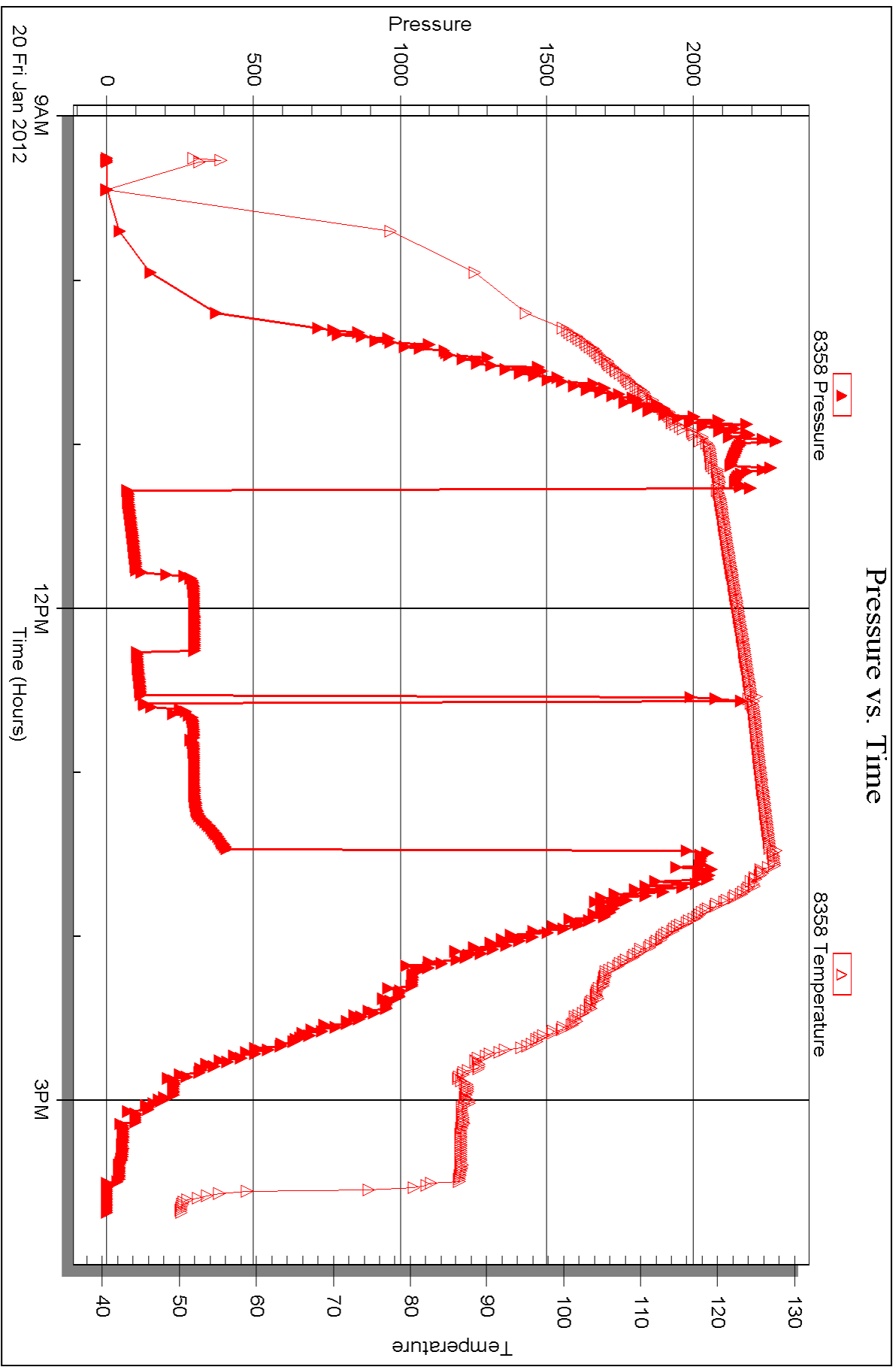
Serial #: 8358

Inside

FIML Natural Resources, LLC

Spitzer #3-6

DST Test Number: 3



Triobite Testing, Inc

Ref. No: 44918

Printed: 2012.01.26 @ 08:34:45



DRILL STEM TEST REPORT

Prepared For: **FIML Natural Resources, LLC**

410 17th. ST STE 900
Denver CO 80202

ATTN: Jim Musgrove

Spitzer #3-6

6-19-31 Scott,KS

Start Date: 2012.01.21 @ 06:00:15

End Date: 2012.01.21 @ 12:09:45

Job Ticket #: 44919 DST #: 4

Trilobite Testing, Inc

PO Box 362 Hays, KS 67601

ph: 785-625-4778 fax: 785-625-5620

Printed: 2012.01.26 @ 08:34:03

FIML Natural Resources, LLC
6-19-31 Scott,KS
Spitzer #3-6
DST # 4
Myric St. Ft. Scott.
2012.01.21



TRILOBITE TESTING, INC.

DRILL STEM TEST REPORT

FIML Natural Resources, LLC

6-19-31 Scott,KS

410 17th. ST STE 900
Denver CO 80202

Spitzer #3-6

Job Ticket: 44919

DST#: 4

ATTN: Jim Musgrove

Test Start: 2012.01.21 @ 06:00:15

GENERAL INFORMATION:

Formation: **Myric St. Ft. Scott.**

Deviated: No Whipstock: ft (KB)

Time Tool Opened: 08:04:45

Time Test Ended: 12:09:45

Test Type: Conventional Bottom Hole (Reset)

Tester: Mike Roberts

Unit No: 48

Interval: 4451.00 ft (KB) To 4530.00 ft (KB) (TVD)

Reference Elevations: 2981.00 ft (KB)

Total Depth: 4530.00 ft (KB) (TVD)

2971.00 ft (CF)

Hole Diameter: 7.88 inches Hole Condition: Fair

KB to GR/CF: 10.00 ft

Serial #: 6668 Outside

Press @ Run Depth: 21.09 psig @ 4457.00 ft (KB)

Capacity: 8000.00 psig

Start Date: 2012.01.21

End Date: 2012.01.21

Last Calib.: 2012.01.21

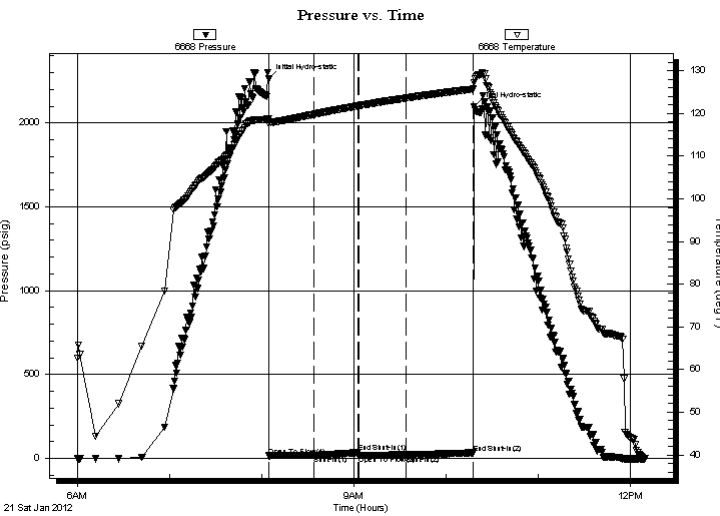
Start Time: 06:00:15

End Time: 12:09:45

Time On Btm: 2012.01.21 @ 08:04:30

Time Off Btm: 2012.01.21 @ 10:18:15

TEST COMMENT: IF: Built to 1/2" blow
IS: No return blow
FF: No blow
FS: No return blow



PRESSURE SUMMARY

Time (Min.)	Pressure (psig)	Temp (deg F)	Annotation
0	2262.07	118.70	Initial Hydro-static
1	15.81	117.66	Open To Flow (1)
30	18.56	119.77	Shut-In(1)
59	35.10	121.76	End Shut-In(1)
59	19.96	121.79	Open To Flow (2)
90	21.09	123.58	Shut-In(2)
133	33.46	125.69	End Shut-In(2)
134	2098.38	127.17	Final Hydro-static

Recovery

Length (ft)	Description	Volume (bbl)
5.00	m 100% m	0.02

* Recovery from multiple tests

Gas Rates

Choke (inches)	Pressure (psig)	Gas Rate (Mcf/d)



**TRILOBITE
TESTING, INC.**

DRILL STEM TEST REPORT

TOOL DIAGRAM

FIML Natural Resources, LLC

6-19-31 Scott,KS

410 17th. ST STE 900
Denver CO 80202

Spitzer #3-6

Job Ticket: 44919

DST#: 4

ATTN: Jim Musgrove

Test Start: 2012.01.21 @ 06:00:15

Tool Information

Drill Pipe:	Length: 4060.00 ft	Diameter: 3.80 inches	Volume: 56.95 bbl	Tool Weight: 1500.00 lb
Heavy Wt. Pipe:	Length: 0.00 ft	Diameter: 0.00 inches	Volume: 0.00 bbl	Weight set on Packer: 20000.00 lb
Drill Collar:	Length: 392.00 ft	Diameter: 2.25 inches	Volume: 1.93 bbl	Weight to Pull Loose: 80000.00 lb
			<u>Total Volume: 58.88 bbl</u>	Tool Chased 0.00 ft
Drill Pipe Above KB:	21.00 ft			String Weight: Initial 71000.00 lb
Depth to Top Packer:	4451.00 ft			Final 71000.00 lb
Depth to Bottom Packer:	ft			
Interval between Packers:	79.00 ft			
Tool Length:	99.00 ft			
Number of Packers:	2	Diameter: 6.75 inches		

Tool Comments:

Tool Description

Tool Description	Length (ft)	Serial No.	Position	Depth (ft)	Accum. Lengths
Change Over Sub	1.00			4432.00	
Shut In Tool	5.00			4437.00	
Hydraulic tool	5.00			4442.00	
Packer	5.00			4447.00	20.00 Bottom Of Top Packer
Packer	4.00			4451.00	
Stubb	1.00			4452.00	
Perforations	5.00			4457.00	
Recorder	0.00	8358	Inside	4457.00	
Recorder	0.00	6668	Outside	4457.00	
Change Over Sub	1.00			4458.00	
Drill Pipe	63.00			4521.00	
Change Over Sub	1.00			4522.00	
Perforations	3.00			4525.00	
Bullnose	5.00			4530.00	79.00 Bottom Packers & Anchor

Total Tool Length: 99.00



**TRILOBITE
TESTING, INC.**

DRILL STEM TEST REPORT

FLUID SUMMARY

FIML Natural Resources, LLC

6-19-31 Scott,KS

410 17th. ST STE 900
Denver CO 80202

Spitzer #3-6

Job Ticket: 44919

DST#: 4

ATTN: Jim Musgrove

Test Start: 2012.01.21 @ 06:00:15

Mud and Cushion Information

Mud Type: Gel Chem

Cushion Type:

Oil API:

0 deg API

Mud Weight: 9.00 lb/gal

Cushion Length:

ft

Water Salinity:

0 ppm

Viscosity: 53.00 sec/qt

Cushion Volume:

bbbl

Water Loss: 6.75 in³

Gas Cushion Type:

Resistivity: 0.00 ohm.m

Gas Cushion Pressure:

psig

Salinity: 1800.00 ppm

Filter Cake: 1.00 inches

Recovery Information

Recovery Table

Length ft	Description	Volume bbl
5.00	m 100% m	0.025

Total Length: 5.00 ft Total Volume: 0.025 bbl

Num Fluid Samples: 0

Num Gas Bombs: 0

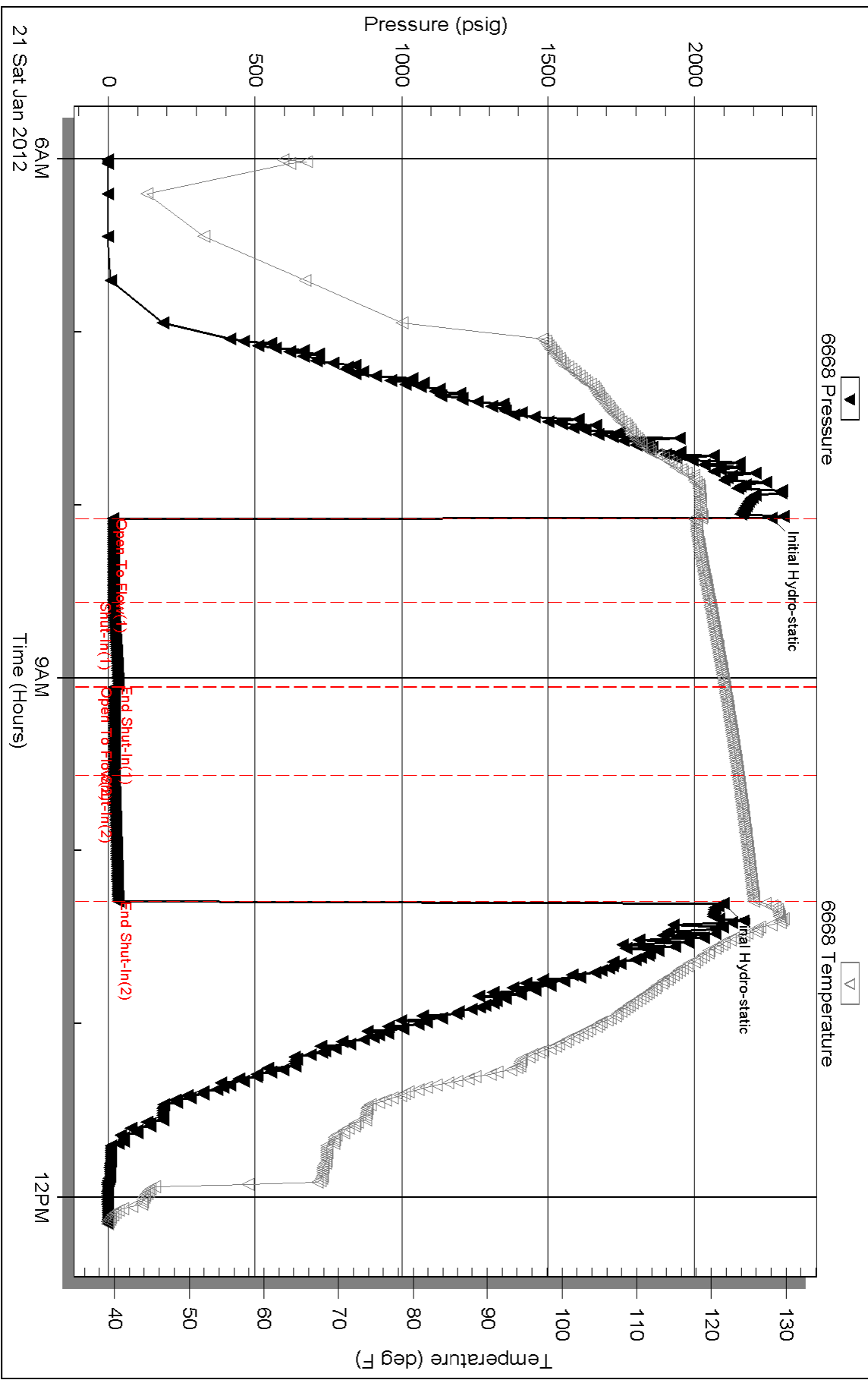
Serial #:

Laboratory Name:

Laboratory Location:

Recovery Comments:

Pressure vs. Time



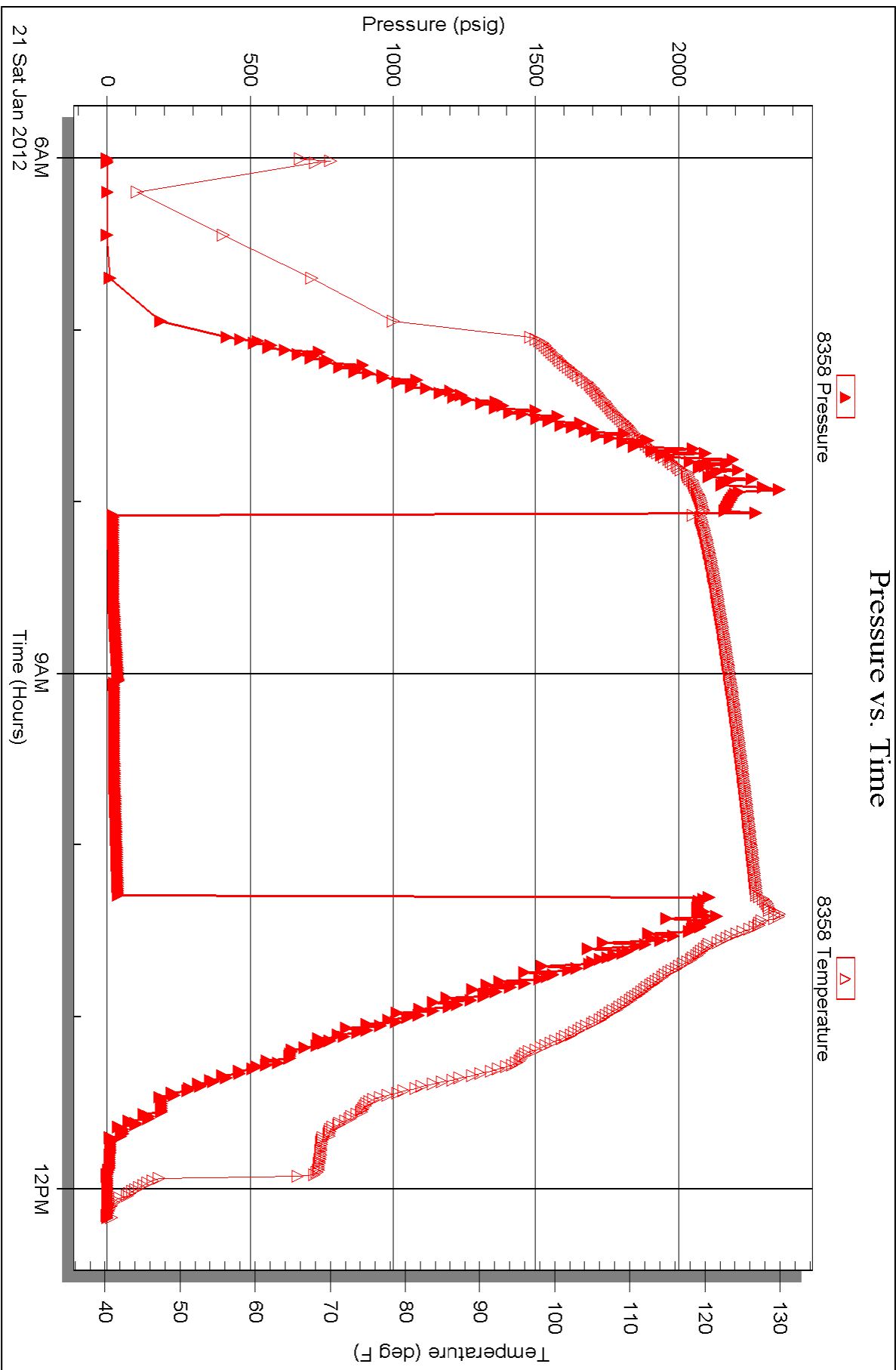
Serial #: 8358

Inside

FIML Natural Resources, LLC

Spitzer #3-6

DST Test Number: 4





TRILOBITE TESTING INC.

P.O. Box 1733 • Hays, Kansas 67601

RECEIVED
JAN 24 2012

Test Ticket

NO. 44916

Well Name & No. Spitzer 3-6 Test No. 1 Date 1-18-12
 Company FIML Natural Resources Elevation 2981 KB 2971 GL
 Address 410 17th ST STE 900 Denver CO 80202
 Co. Rep / Geo. Jim Musgrave Rig HJ Rigi
 Location: Sec. 6 Twp. 19 Rge. 31 Co. Scott State KS

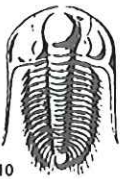
Interval Tested 4226-4266 Zone Tested "J"
 Anchor Length 40' Drill Pipe Run 3847 Mud Wt. 9.0
 Top Packer Depth 4222 Drill Collars Run 392 Vis 50
 Bottom Packer Depth 4226 Wt. Pipe Run Ø WL 6.8
 Total Depth 4266 Chlorides 1400 ppm System LCM 9
 Blow Description IF: BOB in 9 Min
IS: NO Return Blow
FF: BOB in 9 Min
FS: NO Return Blow

Rec	Feet of	%gas	%oil	%water	%mud
<u>662</u>	<u>SW</u>		<u>100</u>		
Rec	Feet of	%gas	%oil	%water	%mud
Rec	Feet of	%gas	%oil	%water	%mud
Rec	Feet of	%gas	%oil	%water	%mud

Rec Total 662 BHT 127 Gravity 1 API RW 543 @ 36.2° F Chlorides 25,000 ppm
 (A) Initial Hydrostatic 2095 Test 1225.00 T-On Location 14:30
 (B) First Initial Flow 25 Jars _____ T-Started 16:44
 (C) First Final Flow 258 Safety Joint _____ T-Open 19:07
 (D) Initial Shut-In 619 Circ Sub NC T-Pulled 21:37
 (E) Second Initial Flow 261 Hourly Standby _____ T-Out 00:02
 (F) Second Final Flow 413 Mileage 25 RT = \$35.00 Comments _____
 (G) Final Shut-In 619 Sampler _____
 (H) Final Hydrostatic 1917 Straddle _____
 Ruined Shale Packer _____
 Shale Packer _____
 Ruined Packer _____
 Extra Packer _____
 Extra Recorder _____
 Day Standby _____
 Accessibility 150.00 Sub Total Ø
 Sub Total \$1410.00 Total 1410 MP/DST Disc't _____

Approved By W Day John Our Representative Mike Roberts

Trilobite Testing Inc. shall not be liable for damaged of any kind of the property or personnel of the one for whom a test is made, or for any loss suffered or sustained, directly or indirectly, through the use of its equipment, or its statements or opinion concerning the results of any test, tools lost or damaged in the hole shall be paid for at cost by the party for whom the test is made.



TRILOBITE TESTING INC.

P.O. Box 1733 • Hays, Kansas 67601

RECEIVED
JAN 24 2012

Test Ticket

NO. 44917

Well Name & No. Spitzer 3-6 Test No. 2 Date 1-19-12
 Company FIML Natural Resources LLC Elevation 2981 KB 2971 GL
 Address 410 17th ST STE 900 Denver Co 80202
 Co. Rep / Geo. Jim Musgrove Rig H2 Rig 1
 Location: Sec: 6 Twp. 19 Rge. 31 Co. Scott State KS

Interval Tested 4271-~~4236~~ 4326 Zone Tested K
 Anchor Length 55 Drill Pipe Run 3901 Mud Wt. 9.0
 Top Packer Depth 4267 Drill Collars Run ~~392~~ 372 Vis 50
 Bottom Packer Depth 4271 Wt. Pipe Run φ WL 6.8
 Total Depth 4326 Chlorides 1400 ppm System LCM 9
 Blow Description IF: Built to 9" Blow
IS: No Return Blow
FF: Built to 5" Blow
FS: No Return Blow

Rec	Feet of	%gas	%oil	%water	%mud
<u>372</u>	<u>MCW with oil Spots</u>		<u>80</u>	<u>20</u>	
<u>10</u>	<u>WCM</u>		<u>20</u>	<u>80</u>	
Rec	Feet of	%gas	%oil	%water	%mud
Rec	Feet of	%gas	%oil	%water	%mud
Rec	Feet of	%gas	%oil	%water	%mud

Rec Total 382 BHT 128 Gravity / API RW 1537 @ 38.3 °F Chlorides 25,000 ppm
 (A) Initial Hydrostatic 2147 Test 1225.00 T-On Location 09:20
 (B) First Initial Flow 32 Jars _____ T-Started 09:57
 (C) First Final Flow 142 Safety Joint _____ T-Open 11:40
 (D) Initial Shut-In 245 Circ Sub NL T-Pulled 14:55
 (E) Second Initial Flow 165 Hourly Standby _____ T-Out 17:14
 (F) Second Final Flow 216 Mileage 25 RT = \$35.00 Comments _____
 (G) Final Shut-In 246 Sampler _____
 (H) Final Hydrostatic 1969 Straddle _____ Ruined Shale Packer _____
 Shale Packer _____ Ruined Packer _____
 Extra Packer _____ Extra Copies _____
 Extra Recorder _____

Initial Open 30
 Initial Shut-In 45
 Final Flow 400
 Final Shut-In 60
 Sub Total 8
 Total 1410
 MP/DST Disc't _____
 Approved By [Signature] Our Representative Mike Roberts

Trilobite Testing Inc. shall not be liable for damaged of any kind of the property or personnel of the one for whom a test is made, or for any loss suffered or sustained, directly or indirectly, through the use of its equipment, or its statements or opinion concerning the results of any test, tools lost or damaged in the hole shall be paid for at cost by the party for whom the test is made.



TRILOBITE TESTING INC.

P.O. Box 1733 • Hays, Kansas 67601

RECEIVED
JAN 24 2012
BY: _____

Test Ticket

NO. 44918

Well Name & No. Spitzer 3-6 Test No. 3 Date 1-20-12
 Company FIML Natural Resources LLC Elevation 2981 KB 2971 GL
 Address 410 17th ST STE 900 Denver CO 80202
 Co. Rep / Geo. Jim Musgrove Rig H2 Rigt
 Location: Sec. 6 Twp. 19 Rge. 31 Co. Scott State KS

Interval Tested 4321-4411 Zone Tested Marmaton A-B-C
 Anchor Length 90 Drill Pipe Run 3933 Mud Wt. 9.1
 Top Packer Depth 4318 Drill Collars Run 372 Vis 53
 Bottom Packer Depth 4321 Wt. Pipe Run 0 WL 6.8
 Total Depth 4411 Chlorides 1800 ppm System LCM 9
 Blow Description IF: Built to 1 1/2" Blow
IS: No Return Blow
FF: No Blow - Flushed - NO Blow
FS: No Return Blow

Rec	Feet of	%gas	%oil	%water	%mud
<u>90</u>	<u>M</u>			<u>100</u>	
Rec	Feet of	%gas	%oil	%water	%mud
Rec	Feet of	%gas	%oil	%water	%mud
Rec	Feet of	%gas	%oil	%water	%mud
Rec	Feet of	%gas	%oil	%water	%mud

Rec Total 90 BHT 126 Gravity / API RW / @ / ° F Chlorides / ppm
 (A) Initial Hydrostatic 2192 Test \$1225.⁰⁰ T-On Location 09:00
 (B) First Initial Flow 66 Jars _____ T-Started 09:15
 (C) First Final Flow 97 Safety Joint _____ T-Open 11:15
 (D) Initial Shut-In 296 Circ Sub NC T-Pulled 13:30
 (E) Second Initial Flow 99 Hourly Standby _____ T-Out 15:40
 (F) Second Final Flow 286 Mileage 25 RT = \$35.⁰⁰ Comments _____
 (G) Final Shut-In 406 Sampler _____
 (H) Final Hydrostatic 2082 Straddle _____ Ruined Shale Packer _____
 Shale Packer _____ Ruined Packer _____
 Extra Packer _____ Extra Copies _____
 Extra Recorder _____ Sub Total _____
 Day Standby _____ Total _____
 Accessibility \$150.⁰⁰ MP/DST Disc't _____
 Sub Total 1410.⁰⁰

Approved By [Signature] Our Representative Mike Roberts

Trilobite Testing Inc. shall not be liable for damaged of any kind of the property or personnel of the one for whom a test is made, or for any loss suffered or sustained, directly or indirectly, through the use of its equipment, or its statements of opinion concerning the results of any test, tools lost or damaged in the hole shall be paid for at cost by the party for whom the test is made.



TRILOBITE TESTING INC.

P.O. Box 1733 • Hays, Kansas 67601

RECEIVED
JAN 24 2012

Test Ticket

NO. 44919

4/10

BY: _____

Well Name & No. Spitzer 3-6 Test No. 4 Date 1-21-12
 Company FIML Natural Resources LLC Elevation 2981 KB 2971 GL
 Address 410 17th ST STE 900 Denver CO 80202
 Co. Rep / Geo. Jim Musgrove Rig H2 Rig 1
 Location: Sec. 6e Twp. 19 Rge. 31 Co. Scott State KS

Interval Tested 4451-4530 Zone Tested Myric Station - FT Scott - Upper Cherokee Line
 Anchor Length 79 Drill Pipe Run 4060 Mud Wt. 9.1
 Top Packer Depth 4447 Drill Collars Run 372 Vis 53
 Bottom Packer Depth 4451 Wt. Pipe Run 0 WL 6.8
 Total Depth 4530 Chlorides 1800 ppm System LCM 9
 Blow Description IF: Built to 1/2" Blow
IS: No Return Blow
FF: No Blow
FS: No Return Blow

Rec	Feet of	%gas	%oil	%water	%mud
<u>5</u>	<u>M</u>			<u>100</u>	
Rec	Feet of	%gas	%oil	%water	%mud
Rec	Feet of	%gas	%oil	%water	%mud
Rec	Feet of	%gas	%oil	%water	%mud
Rec	Feet of	%gas	%oil	%water	%mud

Rec Total 5 BHT 128 Gravity 1 API RW 1225 @ 1 ° F Chlorides 1 ppm
 (A) Initial Hydrostatic 2262 Test 1225 T-On Location 05:00
 (B) First Initial Flow 15 Jars 06:00
 (C) First Final Flow 18 Safety Joint 07:55
 (D) Initial Shut-In 35 Circ Sub NC T-Pulled 10:10
 (E) Second Initial Flow 19 Hourly Standby 12:09 T-Out
 (F) Second Final Flow 21 Mileage 25 = \$35.00 Comments
 (G) Final Shut-In 33 Sampler
 (H) Final Hydrostatic 2098 Straddle Ruined Shale Packer
 Shale Packer Ruined Packer
 Extra Packer Extra Copies
 Extra Recorder
 Day Standby
 Accessibility 150.00 Sub Total 1410.00 MP/DST Disc't

Initial Open 30
 Initial Shut-In 30
 Final Flow 30
 Final Shut-In 45

Approved By [Signature] Our Representative Mike Roberts

Trilobite Testing Inc. shall not be liable for damaged or any kind of the property or personnel of the one for whom a test is made, or for any loss suffered or sustained, directly or indirectly, through the use of its equipment, or its statements or opinion concerning the results of any test, tools lost or damaged in the hole shall be paid for at cost by the party for whom the test is made.