



Office (820) 588-4250 212 Main St. • P.O. Box 215 • Colton, KS 67537 Home (820) 587-3444  
 James C. Musgrove  
 Petroleum Geologist

# GEOLOGIST'S REPORT

DRILLING TIME AND SAMPLE LOG

COMPANY John Roy Evans O.I. Company  
 LEASE Beck 'B'-5  
 FIELD Bloomer  
 LOCATION Se-50-50a (330' E&L & 4290' FEL)  
 SEC 30 T19SP 17 S R0E 10 W  
 COUNTY Ellsworth STATE Kansas  
 CONTRACTOR Royal Drilling (C# 2)  
 SWUD 02-13-2012 COMP 02-18-2012  
 RTD 3400 LTD 3400  
 MUD W/P 2538 TYPE MUD Chemical Dispersed  
 SAMPLES SAVED FROM 2650 TO 3400  
 DRILLING TIME KEPT FROM 2650 TO 3400 RTD  
 SAMPLES EXAMINED FROM 2650 TO 3400  
 BULLDOG OIL SUPERVISION FROM 2880 TO 3400  
 GEOLOGIST ON WELL Josh Austin

ELEVATIONS  
 1815  
 1808  
 KB  
 CASTING 8 5/8" 590'  
 5/2" 3399'  
 BY LOG-TELL  
 CUL DIL CDR

FORMATION TOPS	LOG	SAMPLES
any/dirt	588 +1227	
Base any/dirt	605 +1206	
Leebrwy	2857 -1042	
Toronto	2877 -1062	
Douglas	2886 -1071	
Brown Lime	2971 -1156	
Washing	2986 -1171	
Base Kansas City	3256 -1441	
Carbucite	3282 -1467	
RTD	3400 -1485	

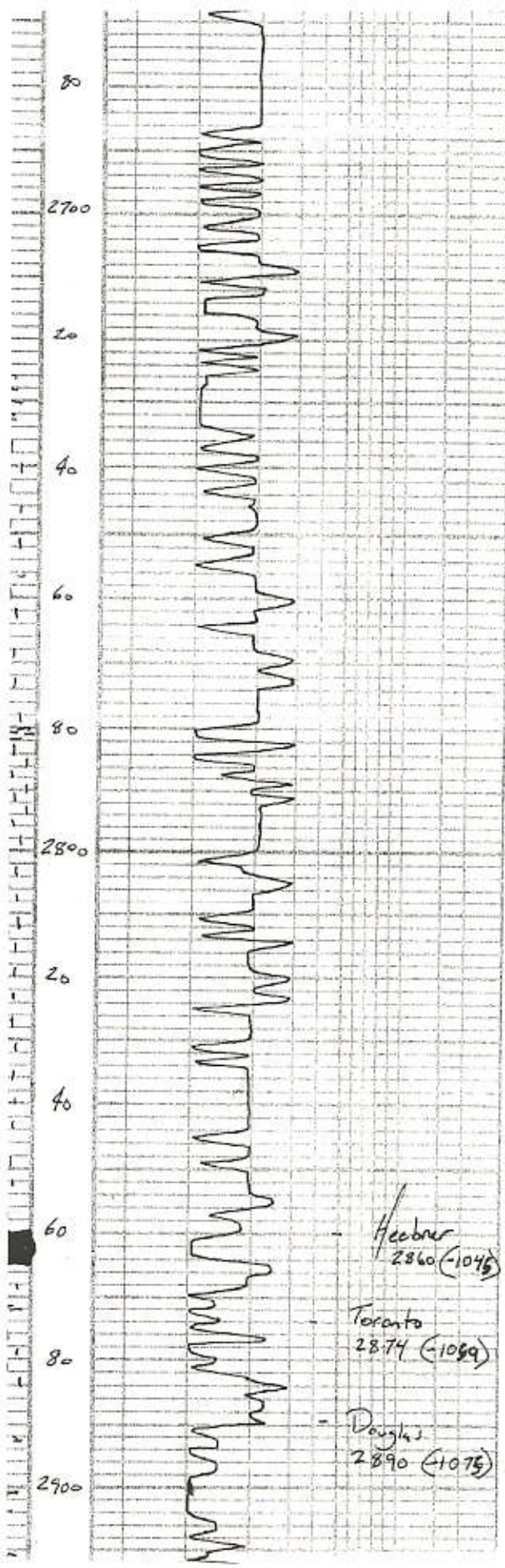
MARKS

5 1/2" production casing was set & cemented.  
 Respectfully submitted  
 Joshua R. Austin  
 petrokom  
 Geologist

## LEGEND



DEPTH	DRILLING TIME (Logarithmic Scale)		SAMPLE DESCRIPTIONS	REMARKS
	5	10		
6	1	10		



ls; cream-gry fat chky foss  
 poor vis; dense

Trace blk carb shale  
 + gry sh  
 ls; cream fat foss chky

gry-gryish green sh

ls; cream-lt. gry fat chky  
 sl. foss poor vis;  
 to wh-lt. gry bony &

ls; cream fat chky sl. gran  
 foss poor vis

blk carb shale

ls; cream foss chky in part  
 + smoky gry-blk A

ls; cream-gry fat foss  
 dense sl. sh poorly dev'd  
 + chert, gry-blk bony  
 w/ chert as

ls; cream-gry fat dense  
 chky in part poor vis;

KB 1815

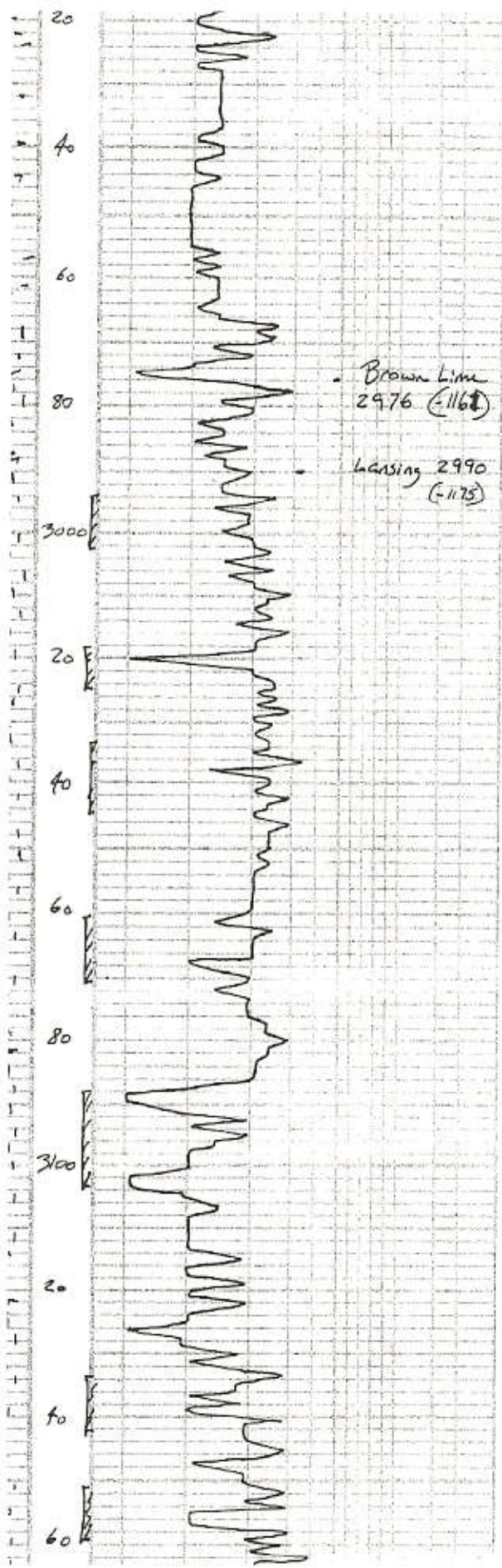
blk carb shale

gry-gryish green sh

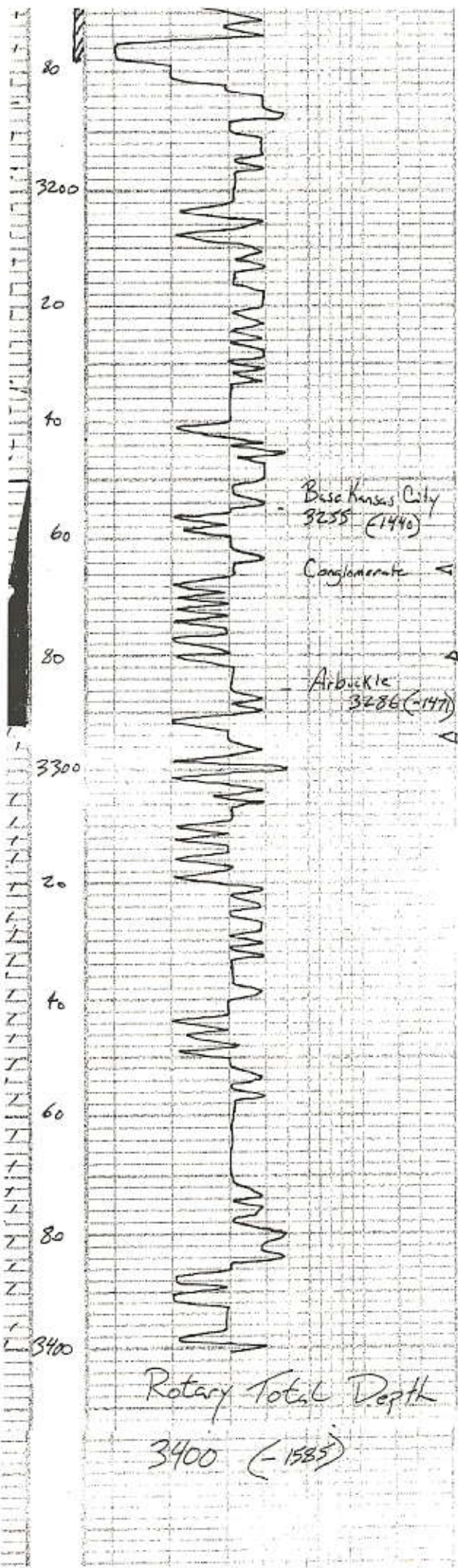
ls; cream fat chky sl. dense  
 + wh chik

shale; gry-gryish green-mud

gry-gryish green silty shale



fine greyish green sand: Vt's  
 Prindle sub rounded sub 2  
  
 grey - greyish green silty shale  
  
 grey silty mica shale  
 SS  
 ls, cream fine cherty  
 grey - greyish green shale  
 ls, Tan - buff fine dense  
 ls, cream fine cherty dense st. foss  
 ls, cream to tan stn. to spally fo porph.  
 ls, cream - wh. fine cherty dense  
 ls, cream cherty ool. few sub ool.  
 fr ool. - vuggy type, tan stn. sfo.  
 Pt odor  
 ls, buff fine foss poorly dev.  
 south side to tan stn. w. sfo.  
 ls, cream highly foss - stath. o. tan  
 stn. to so, fine odor  
 ls, cream fine cherty poorly dev.  
 n/s  
 ls, grey - buff - tan fine dense  
 by poor dev. to grey heavy &  
 ls, tan - cream ool. cherty  
 fr - good ool. o. (barren)  
 ls, cream to tan stn. to spally fo  
 Pt odor  
 ls, cream cherty ool. fr ool. o.  
 n/s  
 grey - blk shale  
 ls, cream - grey fine dense st. foss  
 ls, cream fine st. foss cherty  
 poorly dev. o. n/s  
 S



Ls. crm chiky ool, com  
 fr. good am d to brn str  
 to fo. nodules

blk carb shale

Ls. H. gry. crm fmed xl  
 chiky few scatt'd N/S

ls. aa

blk carb shale

Ls. crm fl. dense chiky l.p. sh

gry. green shale

cherty yellow-crm bony  
 brisk red = blood red soft shale

Soft brisk red chiy/shale  
 v.c. d

dolomite wh med xl fr. frag. brn str  
 SFO very faint odor

Dolomite wh med - coarse xls  
 fr. 1/2" to spotty brn str SFO  
 fr. fr. odor

Dolomite H. gry. crm med xl  
 good med d to brn str, spotty SFO  
 fr. odor

Dol. H. gry. crm fmed xl  
 few glauc. pec fr. N/S

dolomite; crm - H. gry f. med xl  
 dense, str. suc. poor vis?

Dol. crm few sandy pec  
 + SFO SS

Dolomite crm. pink granular  
 sandy few scatt. N/S

DST #1 3250-3292  
 30-45-30-45

Blow, BOB in 8 min

final bail to 4"  
 very weak blow back

Recovery 504' OCWm

(10% oil 60% mud 30% w)

252' Water

Pressure 151P 1155

FSIP 1137

IFP 66-229

FFP 231-365

HST 1670

-1477