



DRILL STEM TEST REPORT

Prepared For: **John Roy Evans Oil Company**

405 Fourth St. Box 385 Clafin
Kansas 67525

ATTN: Josh Austin

Beck B-5

30/17S/10W Ellsworth Co.

Start Date: 2012.02.17 @ 09:33:00

End Date: 2012.02.18 @ 16:55:30

Job Ticket #: 18838 DST #: 1

Superior Testers Enterprises LLC
PO Box 138 Great Bend KS 67530
1-800-792-6902

Printed: 2012.02.20 @ 12:16:04



DRILL STEM TEST REPORT

John Roy Evans Oil Company

30/17S/10W Ellsworth Co.

405 Fourth St. Box 385 Claflin
Kansas 67525

Beck B-5

Job Ticket: 18838

DST#: 1

ATTN: Josh Austin

Test Start: 2012.02.17 @ 09:33:00

GENERAL INFORMATION:

Formation: **Arbuckle**

Deviated: No Whipstock: ft (KB)

Time Tool Opened: 11:30:00

Time Test Ended: 16:55:30

Test Type: Conventional Bottom Hole (Initial)

Tester: Dylan E Ellis

Unit No: 3345/Great Bend/52

Interval: 3250.00 ft (KB) To 3292.00 ft (KB) (TVD)

Reference Elevations: 1815.00 ft (KB)

Total Depth: 3292.00 ft (KB) (TVD)

1808.00 ft (CF)

Hole Diameter: 7.88 inches Hole Condition: Fair

KB to GR/CF: 7.00 ft

Serial #: 6666 Outside

Press @ Run Depth: 229.68 psia @ 3288.00 ft (KB)

Capacity: 5000.00 psia

Start Date: 2012.02.17

End Date: 2012.02.17

Last Calib.: 2012.02.18

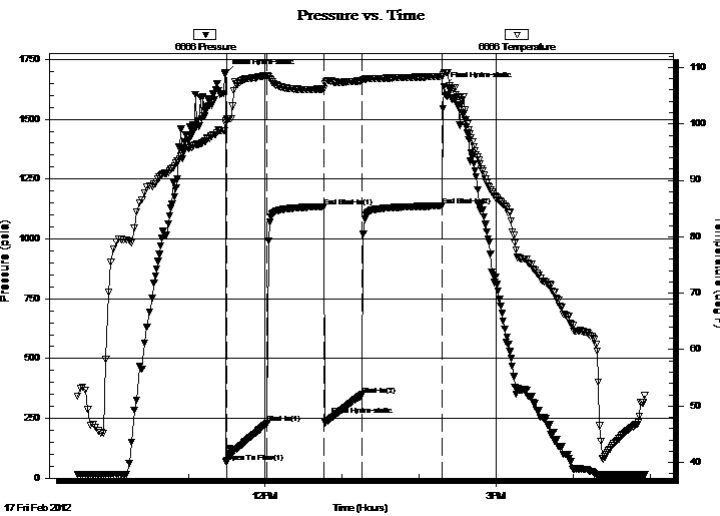
Start Time: 09:34:00

End Time: 16:55:30

Time On Btm: 2012.02.17 @ 11:29:00

Time Off Btm: 2012.02.17 @ 12:46:30

TEST COMMENT: 1ST Opening 30 Minutes good steady building blow/blow blew bottom of bucket in 8 minutes
 1ST Shut-In 45 Minutes no blow back
 2ND Opening 30 Minutes weak building blow/blow blew up to 4 inches and died off to surface
 2ND Shut-In 45 Minutes yes very weak surface // Look at the tool page comments!



PRESSURE SUMMARY

Time (Min.)	Pressure (psia)	Temp (deg F)	Annotation
0	1692.45	100.13	Initial Hydro-static
1	66.56	100.83	Open To Flow (1)
33	229.68	108.58	Shut-In(1)
77	1135.18	106.16	End Shut-In(1)
78	231.67	107.20	Final Hydro-static
107	348.31	107.65	Shut-In(2)
169	1137.54	108.38	End Shut-In(2)
171	1637.66	109.05	Final Hydro-static

Recovery

Length (ft)	Description	Volume (bbl)
502.00	Oil cut Muddy Water	7.04
0.00	10% Oil 60% Mud 30% Water	0.00
252.00	Water with a skim of Oil on top	3.53
0.00	100% Water Oil-skim on top	0.00
0.00	Chlorides were 19,000	0.00
0.00	Resistivity was .39 @ 86 degrees	0.00

Gas Rates

Choke (inches)	Pressure (psia)	Gas Rate (Mcf/d)



DRILL STEM TEST REPORT

John Roy Evans Oil Company

30/17S/10W Ellsworth Co.

405 Fourth St. Box 385 Claflin
Kansas 67525

Beck B-5

Job Ticket: 18838

DST#: 1

ATTN: Josh Austin

Test Start: 2012.02.17 @ 09:33:00

GENERAL INFORMATION:

Formation: **Arbuckle**

Deviated: No Whipstock: ft (KB)

Time Tool Opened: 11:30:00

Time Test Ended: 16:55:30

Test Type: Conventional Bottom Hole (Initial)

Tester: Dylan E Ellis

Unit No: 3345/Great Bend/52

Interval: 3250.00 ft (KB) To 3292.00 ft (KB) (TVD)

Reference Elevations: 1815.00 ft (KB)

Total Depth: 3292.00 ft (KB) (TVD)

1808.00 ft (CF)

Hole Diameter: 7.88 inches Hole Condition: Fair

KB to GR/CF: 7.00 ft

Serial #: 6731

Inside

Press @ Run Depth: 1136.92 psia @ 3289.00 ft (KB)

Capacity: 5000.00 psia

Start Date: 2012.02.17

End Date: 2012.02.17

Last Calib.: 2012.02.18

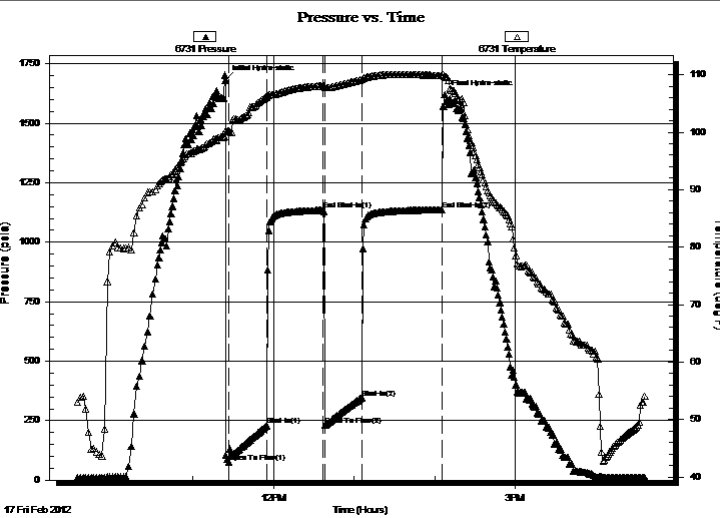
Start Time: 09:34:00

End Time: 16:36:30

Time On Btm: 2012.02.17 @ 11:24:00

Time Off Btm: 2012.02.17 @ 14:07:30

TEST COMMENT: 1ST Opening 30 Minutes good steady building blow/blow blew bottom of bucket in 8 minutes
 1ST Shut-In 45 Minutes no blow back
 2ND Opening 30 Minutes weak building blow/blow blew up to 4 inches and died off to surface
 2ND Shut-In 45 Minutes yes very weak surface // Look at the tool page comments!



PRESSURE SUMMARY

Time (Min.)	Pressure (psia)	Temp (deg F)	Annotation
0	1681.51	100.26	Initial Hydro-static
3	76.91	100.07	Open To Flow (1)
31	229.27	106.16	Shut-In(1)
73	1134.70	108.03	End Shut-In(1)
75	231.44	107.77	Open To Flow (2)
102	346.56	109.10	Shut-In(2)
162	1136.92	109.81	End Shut-In(2)
164	1619.89	109.68	Final Hydro-static

Recovery

Length (ft)	Description	Volume (bbl)
502.00	Oil cut Muddy Water	7.04
0.00	10% Oil 60% Mud 30% Water	0.00
252.00	Water with a skim of Oil on top	3.53
0.00	100% Water Oil-skim on top	0.00
0.00	Chlorides were 19,000	0.00
0.00	Resistivity was .39 @ 86 degrees	0.00

Gas Rates

Choke (inches)	Pressure (psia)	Gas Rate (Mcf/d)



DRILL STEM TEST REPORT

TOOL DIAGRAM

John Roy Evans Oil Company

30/17S/10W Ellsworth Co.

405 Fourth St. Box 385 Claflin
Kansas 67525

Beck B-5

Job Ticket: 18838

DST#: 1

ATTN: Josh Austin

Test Start: 2012.02.17 @ 09:33:00

Tool Information

Drill Pipe:	Length: 3240.00 ft	Diameter: 3.80 inches	Volume: 45.45 bbl	Tool Weight: 2000.00 lb
Heavy Wt. Pipe:	Length: 0.00 ft	Diameter: 0.00 inches	Volume: 0.00 bbl	Weight set on Packer: 20000.00 lb
Drill Collar:	Length: 0.00 ft	Diameter: 0.00 inches	Volume: 0.00 bbl	Weight to Pull Loose: 16000.00 lb
			<u>Total Volume: 45.45 bbl</u>	Tool Chased 0.00 ft
Drill Pipe Above KB:	10.00 ft			String Weight: Initial 32000.00 lb
Depth to Top Packer:	3250.00 ft			Final 38000.00 lb
Depth to Bottom Packer:	ft			
Interval between Packers:	42.00 ft			
Tool Length:	62.00 ft			
Number of Packers:	2	Diameter: 6.75 inches		

Tool Comments: The final blow was not true, the head was loose in the top of the head joint. Also the final blow had a very weak surface blow on it.

Tool Description	Length (ft)	Serial No.	Position	Depth (ft)	Accum. Lengths
Shut-In Tool	5.00			3235.00	
Hydraulic Tool	5.00			3240.00	
Packer	5.00			3245.00	20.00 Bottom Of Top Packer
Packer	5.00			3250.00	
Anchor	37.00			3287.00	
Recorder	1.00	6666	Outside	3288.00	
Recorder	1.00	6731	Inside	3289.00	
Bull Plug	3.00			3292.00	42.00 Bottom Packers & Anchor

Total Tool Length: 62.00



DRILL STEM TEST REPORT

FLUID SUMMARY

John Roy Evans Oil Company

30/17S/10W Ellsworth Co.

405 Fourth St. Box 385 Claflin
Kansas 67525

Beck B-5

Job Ticket: 18838

DST#: 1

ATTN: Josh Austin

Test Start: 2012.02.17 @ 09:33:00

Mud and Cushion Information

Mud Type: Gel Chem

Cushion Type:

Oil API:

deg API

Mud Weight: 9.00 lb/gal

Cushion Length:

ft

Water Salinity:

ppm

Viscosity: 54.00 sec/qt

Cushion Volume:

bbbl

Water Loss: 8.38 in³

Gas Cushion Type:

Resistivity: ohm.m

Gas Cushion Pressure:

psia

Salinity: 5600.00 ppm

Filter Cake: 1.00 inches

Recovery Information

Recovery Table

Length ft	Description	Volume bbbl
502.00	Oil cut Muddy Water	7.042
0.00	10% Oil 60% Mud 30% Water	0.000
252.00	Water with a skim of Oil on top	3.535
0.00	100% Water Oil-skim on top	0.000
0.00	Chlorides were 19,000	0.000
0.00	Resistivity was .39 @ 86 degrees	0.000

Total Length: 754.00 ft Total Volume: 10.577 bbl

Num Fluid Samples: 0

Num Gas Bombs: 0

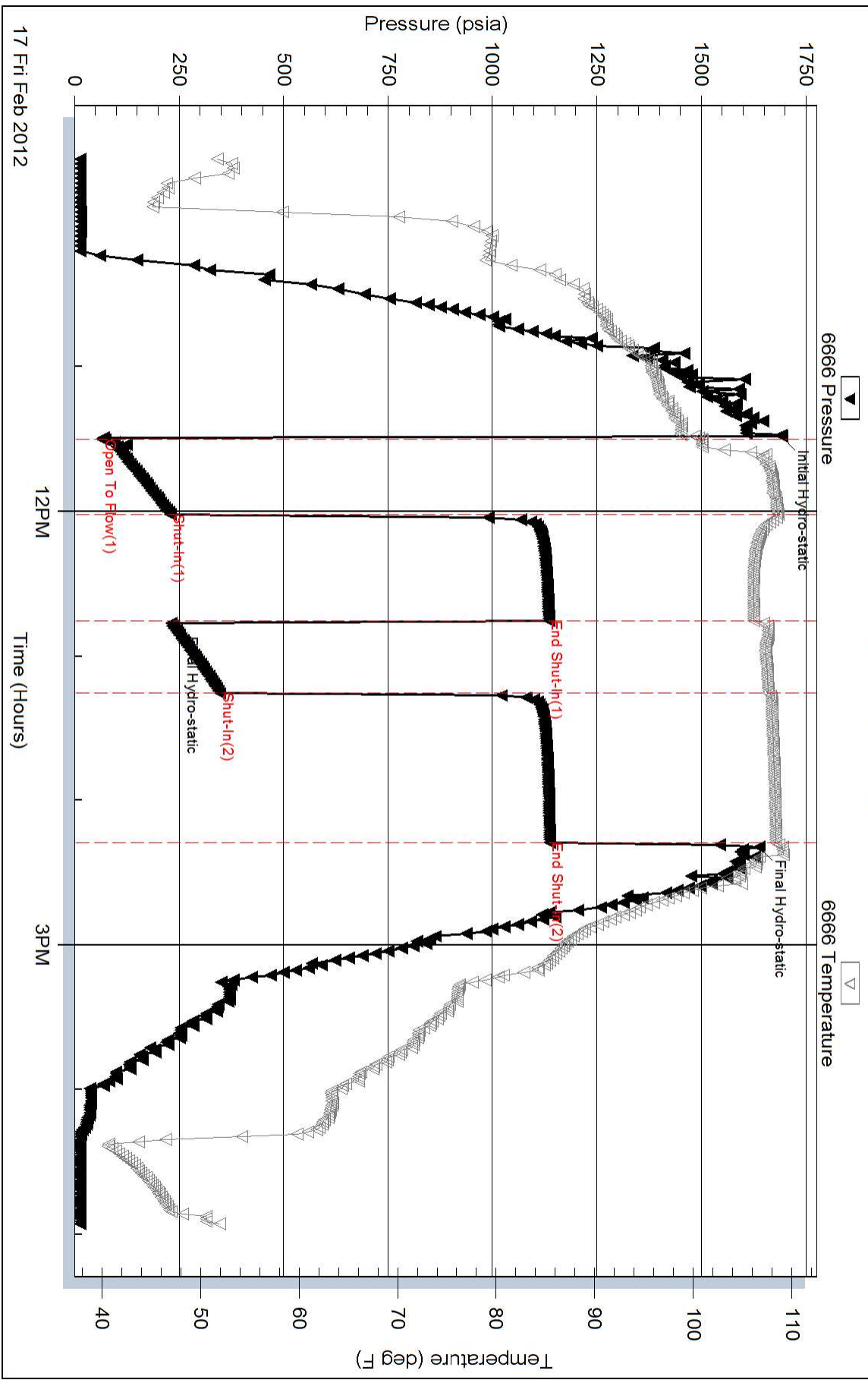
Serial #:

Laboratory Name:

Laboratory Location:

Recovery Comments:

Pressure vs. Time



Pressure vs. Time

