

GEOLOGIC REPORT

DAVID J. GOLDAK

WICHITA, KANSAS
Scale 1:240 (5"=100') Imperial
Measured Depth Log

Well Name: Lonker #1
Location: Section 22 - T32S - R12W
License Number: API: 15-007-23824
Spud Date: 01 / 04 / 2012
Surface Coordinates: 990' FNL and 990' FWL
SE - NW - NW
Region: Barber Co., KS
Drilling Completed: 01 / 12 / 2012
Bottom Hole Coordinates:
Ground Elevation (ft): 1571' K.B. Elevation (ft): 1581'
Logged Interval (ft): 3500' To: 4850' Total Depth (ft): 4850'
Formation: Arbuckle
Type of Drilling Fluid: Chemical - Mud-Co

Printed by WellSight Log Viewer from WellSight Systems 1-800-447-1534 www.WellSight.com

OPERATOR

Company: White Exploration, Inc.
Address: 2400 N. Woodlawn, Suite 115
Wichita, Kansas 67220

GEOLOGIST

Name: David J. Goldak
Company: D. J. GOLDAK, INC.
Address: 155 N. Market, Suite 710
Wichita, Kansas 67202

General Info

CONTRACTOR: Pickrell Drilling, Rig #1

BIT RECORD:

No.	Size	Make	Jets	Out	Feet	Hours
1	12-1/4	JZ-L116-RR	3-14s	40	40	0.75
2	12-1/4	JZ-?-RR	4-14s	263	223	2.25
3	7-7/8	JZ-ENP0123	2-18s	4446	4183	90.25
4	7-7/8	JZ-MD30-RR	3-14s	4850	404	25.25

SURVEYS: 263'-1.0, 1065'-1.0, 2109'-0.75, 3124'-1.0, 3660'-1.75
3943'-2.0, 4131'-1.25, 4446'-1.25, 4850'-0.75

GENERAL DRILLING AND PUMP INFORMATION:

Drilling with 36,000-42,000 lbs. on bit and 75 RPM.
Pumping 65 S/M, 8.4 B/M, and 1150 psi at standpipe.

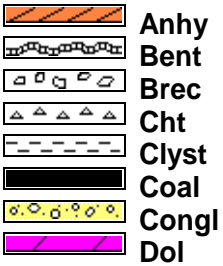
Daily Status

01/04/12 - Spud @ 10:30 PM; Set 8-5/8" Csg at 259'
 01/05/12 - 263' WOC; DP @ 2:30 PM
 01/06/12 - 1,200' Drilling
 01/07/12 - 2,330' Drilling
 01/08/12 - 3,200' Drilling; Displace @ 3,503'
 01/09/12 - 3,870' Drilling
 01/10/12 - 4,351' Drilling; Bit trip @ 4,446'
 01/11/12 - 4,650' Drilling; RTD 4,850' @ 9:30 PM
 01/12/12 - 4,850' Logging

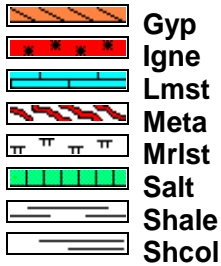
DSTs

None

ROCK TYPES



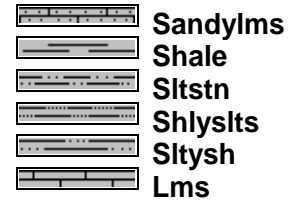
Anhy
Bent
Brec
Cht
Clyst
Coal
Congl
Dol



Gyp
Igne
Lmst
Meta
Mrlst
Salt
Shale
Shcol



Shgy
Slst
Ss
Till
Carb sh
Dol
Dtd
Gry sh



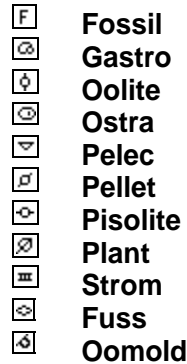
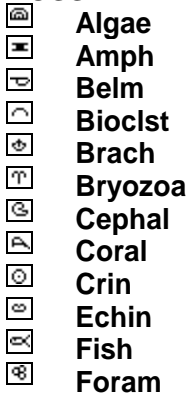
Sandylms
Shale
Slstsn
Shlyslts
Sltysh
Lms

ACCESSORIES

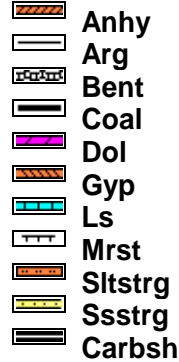
MINERAL



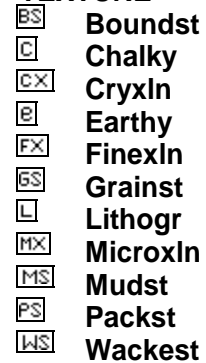
FOSSIL



STRINGER



TEXTURE



OTHER SYMBOLS

POROSITY TYPE

- Earthy
- Fenest
- Fracture
- Inter
- Moldic
- Organic
- Pinpoint
- Vuggy

SORTING

- Well
- Moderate
- Poor

ROUNDING

- Rounded
- Subrnd
- Subang
- Angular

OIL SHOWS

- Even
- Spotted
- Ques
- Dead
- Gas show

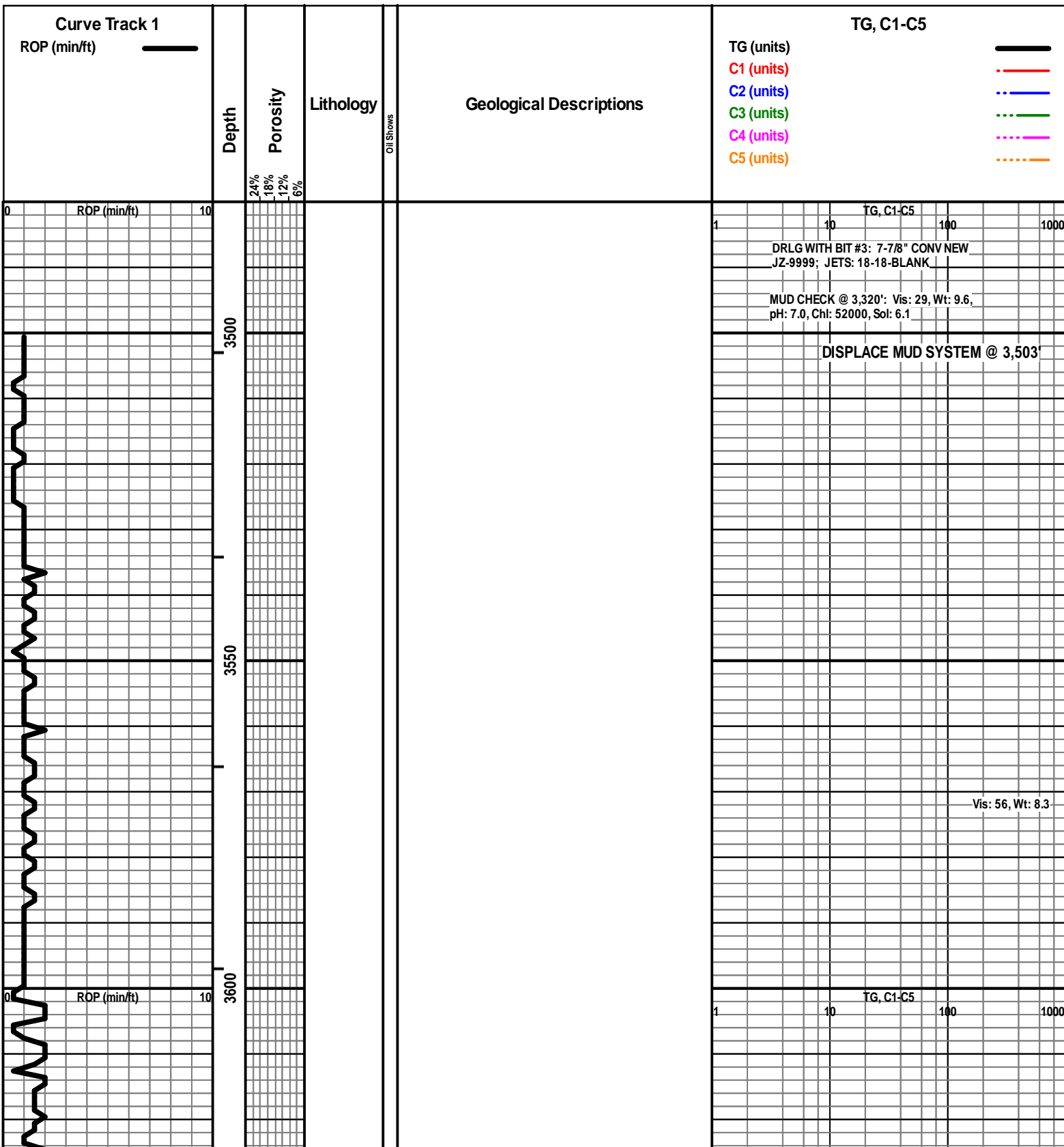
INTERVALS

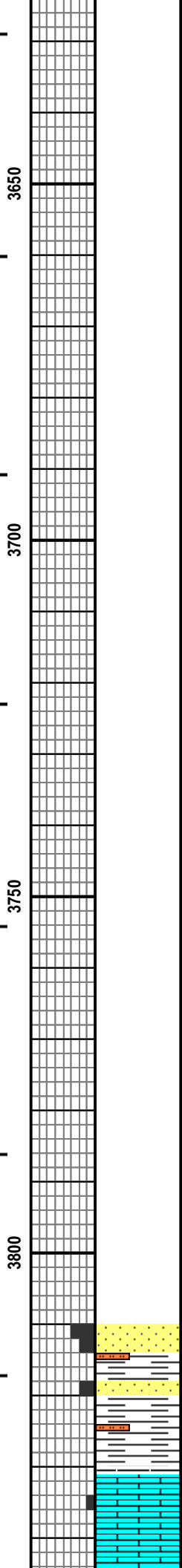
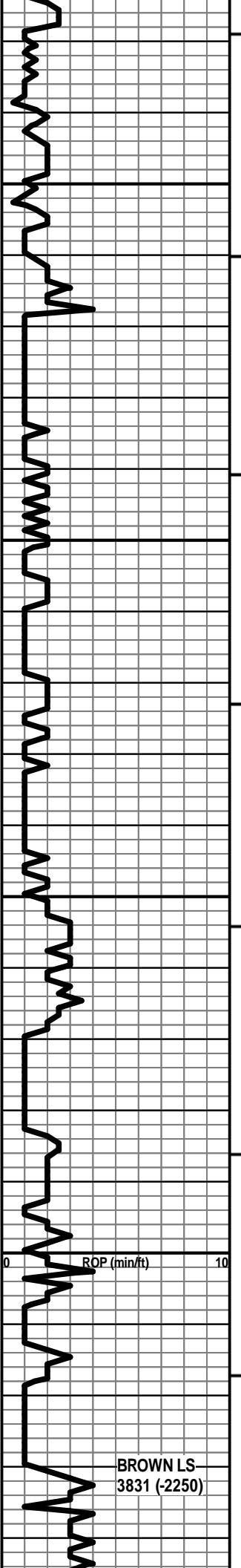
- Core
- Dst

- Dst/2
- Dst

EVENTS

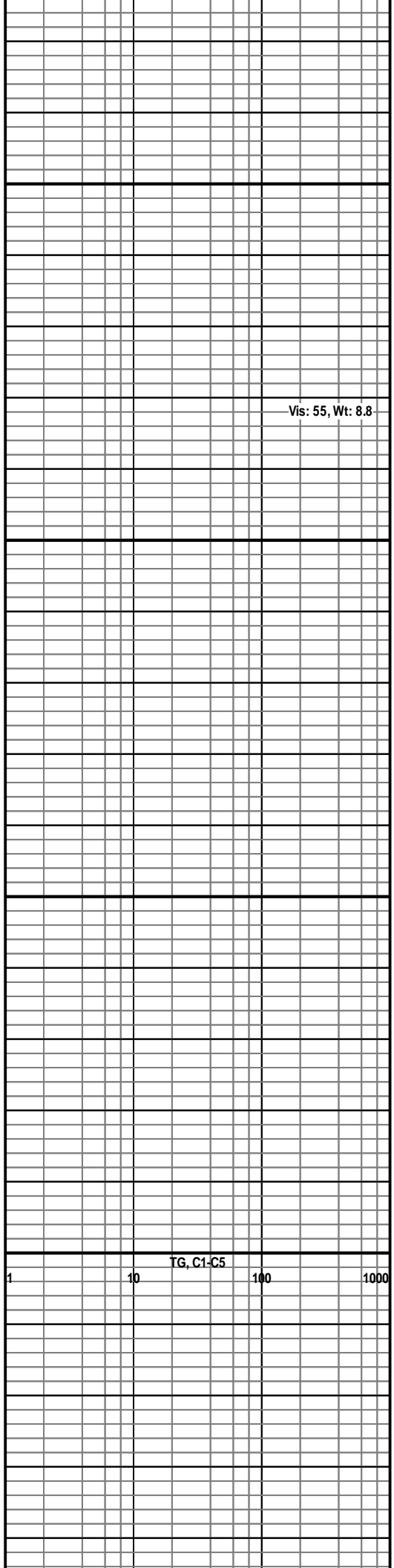
- Rft
- Sidewall
- Conn

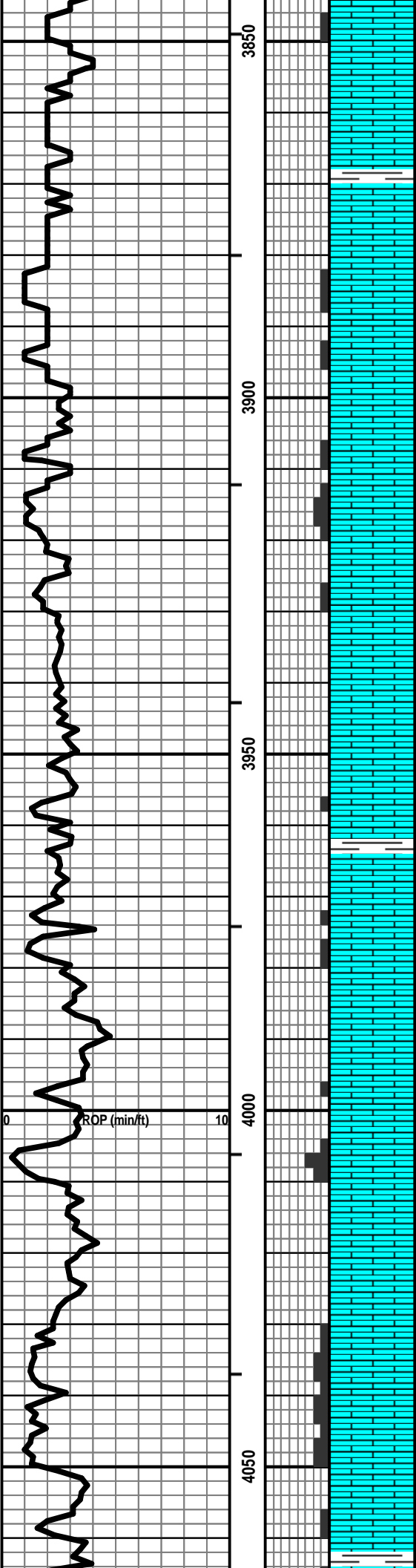




SH - LT / MED GY W/SS - LT GY, VF QTZ GR, W SRTD, SR / R,
MIC, F / G INTGR POR, NS W/ SCAT SLTST - LT / MED GY

LS - TAN / BRN / CRM, VF / F XLN, FOSS IN PT, SCAT P
INTXLN POR, PRED DNS, NS





LS - ASABOVE W/ GY, MOT IN PT, VF / F XLN, FOSS IN PT, PRED DNS, NS

LS - CRM / GY / TAN, VF / F XLN, SCAT M REXLN CALC, FOSS, OOL IN PT, SCAT P INTXLN + PPT POR, CHKY IN PT, PRED DNS, NS

Vis: 40, Wt: 9.0

LS - ASABOVE, P / F INTXLN + VUG POR IN PT, SCAT CHKY / DNS, NS

GAS UNIT FOOT MARKER NOT OPERATING;
REPAIR UNIT AFTER ARRIVING ON LOCATION

LS - TAN / CRM / BRN, VF / F XLN, SCAT CRYPTO XLN, FOSS IN PT, SUBCHKY IN PT, PRED DNS, NS

DECR. BIT WIGHT TO 28,000-30,000 DUE TO SURVEY

LS - TAN / BRN / CRM, VF / F XLN, SCAT REXLN CALC, SL FOSS, SCAT P INTXLN + PPT POR, PRED DNS, NS

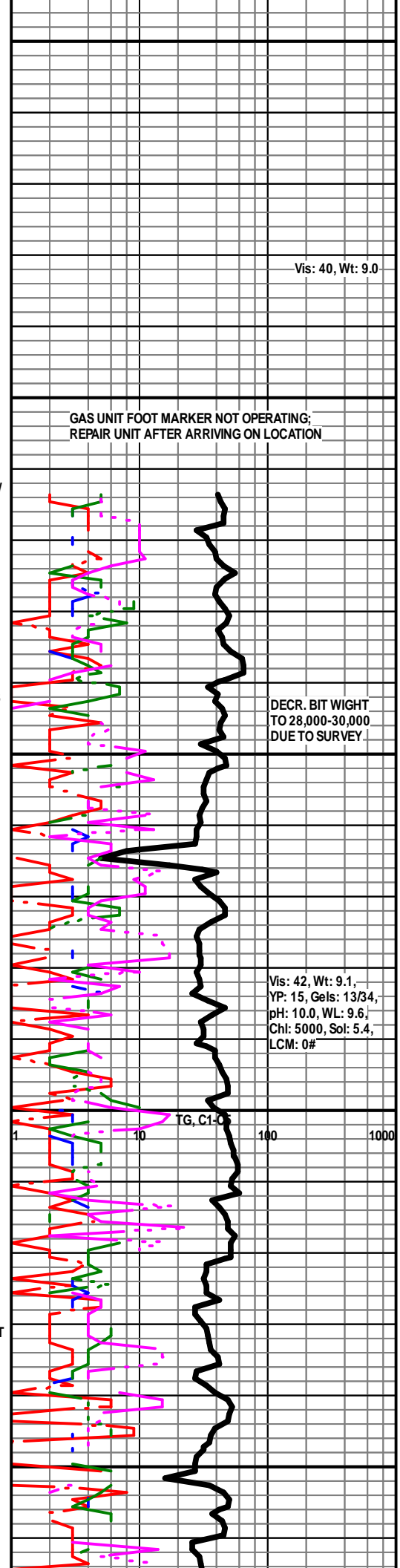
Vis: 42, Wt: 9.1,
YP: 15, Gels: 13/34,
pH: 10.0, WL: 9.6,
Chl: 5000, Sol: 5.4,
LCM: 0#

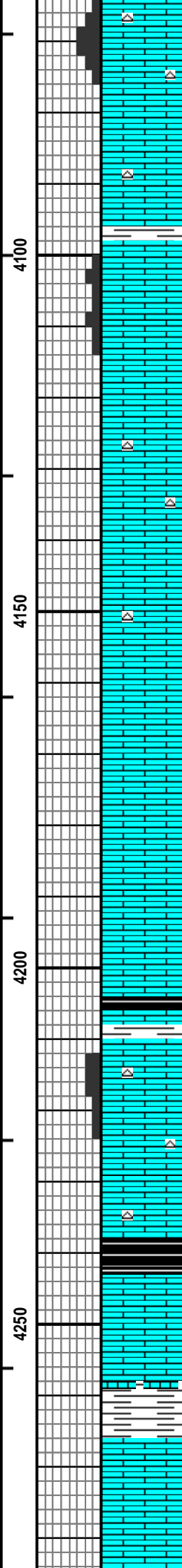
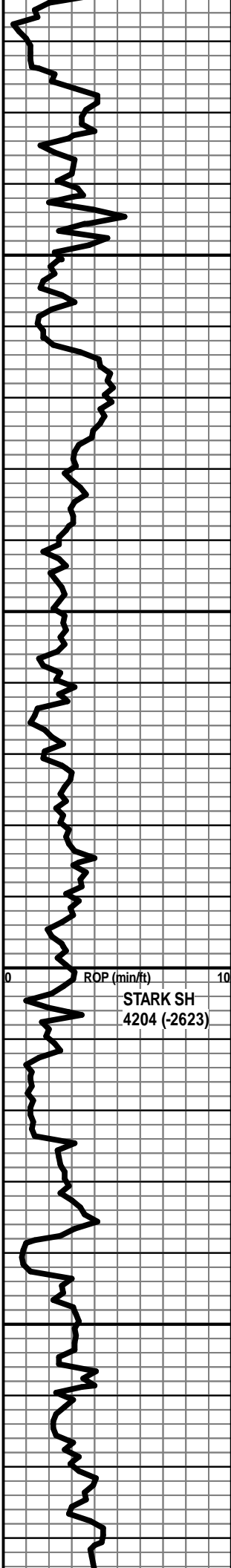
LS - CRM / TAN / BRN, VF / F XLN, FOSS IN PT, P / F VUG + INTXLN POR IN PT, SCAT DNS, NS

TG, C1-C

LS - CRM / TAN / GY, VF / F XLN, FOSS IN PT, OOL IN PT, SCAT P / F INTXLN + PPT POR, PRED DNS, NS

LS - CRM / GY / SCAT TAN, VF / F XLN, OOL, SL FOSS, P / F





OOM POR, F INTXLN POR IN PT, SCAT CHKY, NS W/CHT - LT GY / CRM / WHT, MOT, OOL

LS - GY / TAN, VF / CRYPTO XLN, SL FOSS, PRED DNS, NS

LS - CRM / TAN, VF / F XLN, OOL + FOSS, F / P VUG + PPT POR, SUBCHKY IN PT, NS

LS - TAN / BRN, VF / SCAT F XLN, SL FOSS, PRED DNS, NS W/CHT - LT / MED GY

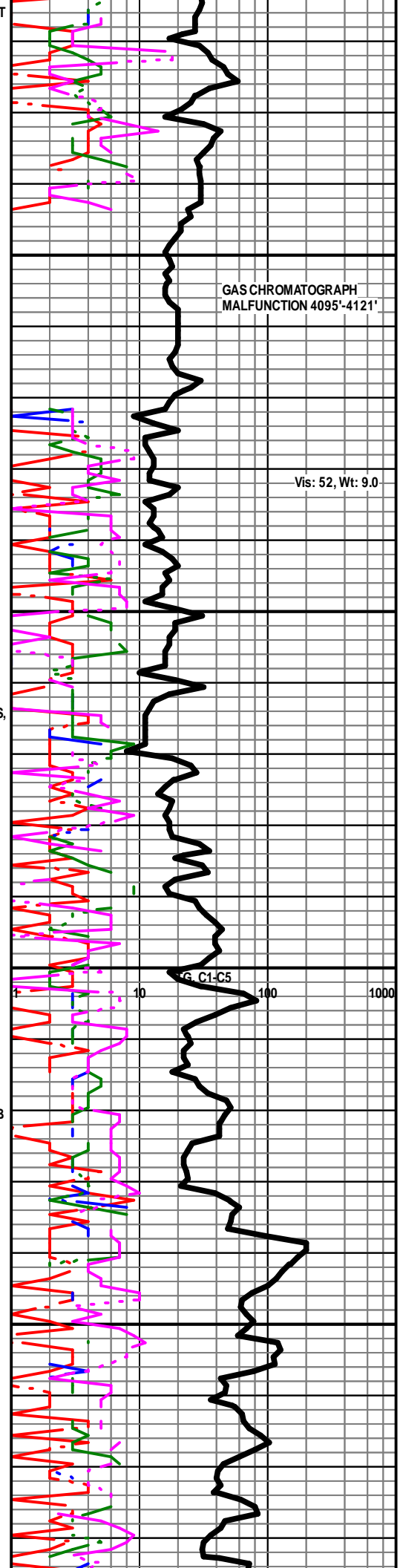
LS - TAN / BRN, VF / F XLN, SL FOSS, CHKY IN PT, PRED DNS, NS

LS - TAN / BRN / SCAT GY, VF / F XLN, SCAT REXLN CALC, FOSS IN PT, SUBCHKY IN PT, PRED DNS, NS

LS - CRM / TAN, F XLN, OOL, P / F OOM POR, P INTXLN POR, NS W/SCAT CHT - LT GY / WHT W/SH - DK GY / BLK, CARB IN PT

LS - CRM / TAN / BRN / SCAT GY, VF / F XLN, FOSS + OOL IN PT, SCAT CHKY, PRED DNS, NS W/SCAT CHT - AA W/SH - BLK, CARB

LS - BRN / TAN, VF / F XLN, SL FOSS, SUBCHKY IN PT, PRED DNS, NS W/SH - MED / DK GY



4300
4350
4400
4450
4500

LS - TAN / BRN / SCAT GY, VF / F XLN, OOL IN PT, SL FOSS, PRED DNS, NS W/ SH - LT / DK GY / GRN

LS - CRM / TAN / GY, MOT IN PT, VF / F XLN, SCAT REXLN CALC, SL FOSS, PRED DNS, NS W/ SCAT SH - GRN / GY

LS - CRM / GY / TAN, VF / F XLN, SCAT CRYPTO XLN, SL FOSS + OOL, CHKY IN PT, PRED DNS, NS W/ SH - GY / GRN

MISSISSIPPIAN
4380 (-2799)

CHT - WHT / LT GY, OPQ / TRANS, F WEATH IN PT, P / F TRIP POR IN PT, TR VUG POR, P / F SGB, SSFO + OILY FILM, NO ODOR, BRN / BLK PRED SPTY STN, TR SAT STN, G FLOUR, P / G CUT

CFS @ 4398'

ROP (min/ft)

CHT - ASABOVE, SL / F WEATH, P / SCAT F TRIP POR, SSGB + OILY FILM, VSSFO IN PT, NO ODOR, SCAT BRN / BLK SPTY STN, P / G FLOUR + CUT W/ LS - CRM / TAN, F XLN, CHTY IN PT, PRED DNS, SCAT SPTYSTN W/ SH - GY / GRN

CFS @ 4422'

CHT - ASABOVE

LS - TAN / CRM, VF / F XLN, PRED DNS, NS W/ CHT - LT GY / WHT W/ ABNT SH - GY / GRN

BIT TRIP @ 4,446'

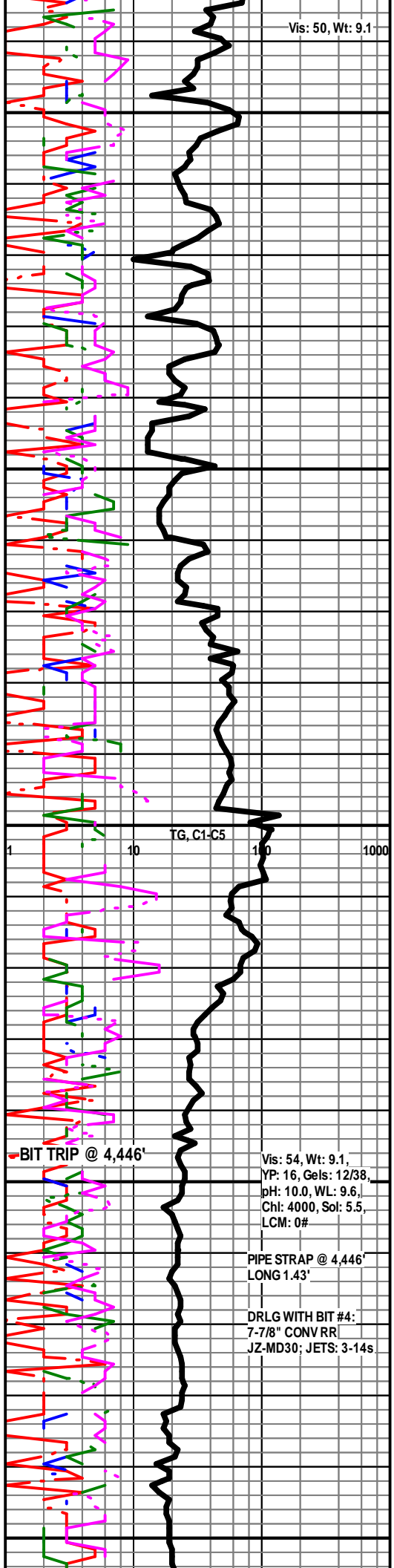
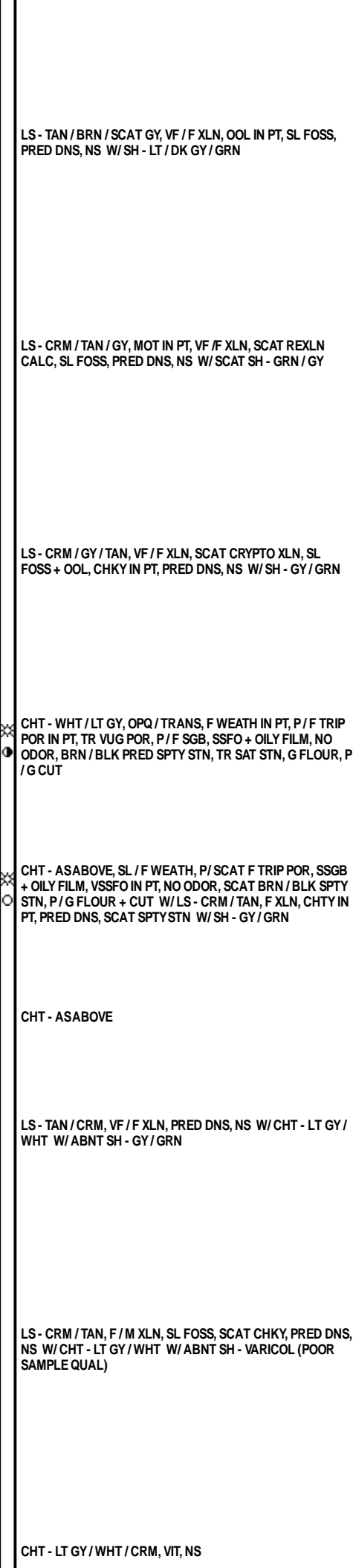
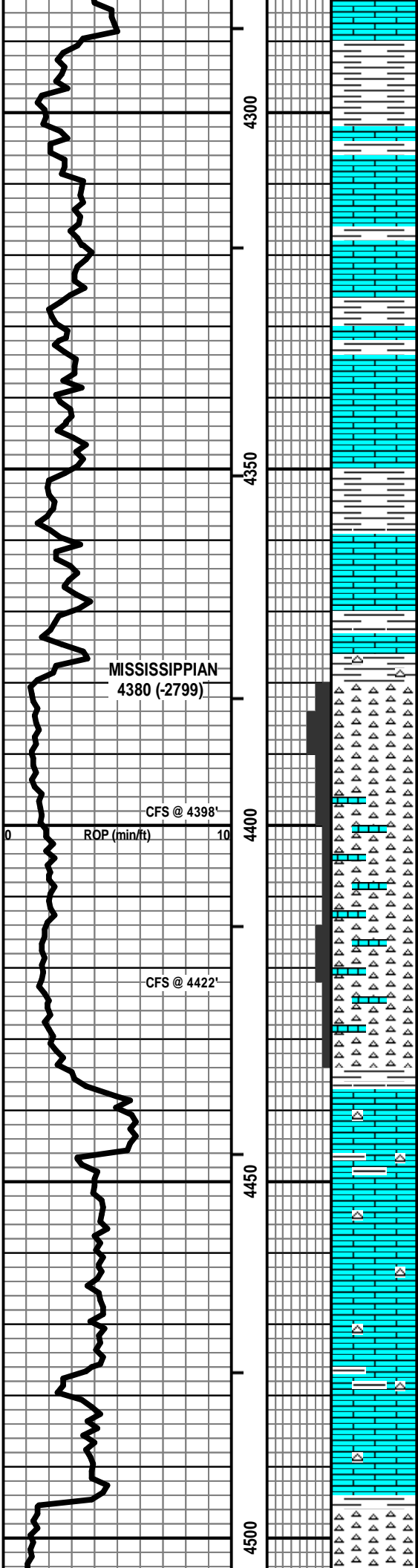
Vis: 54, Wt: 9.1,
YP: 16, Gels: 12/38,
pH: 10.0, WL: 9.6,
Chl: 4000, Sol: 5.5,
LCM: 0#

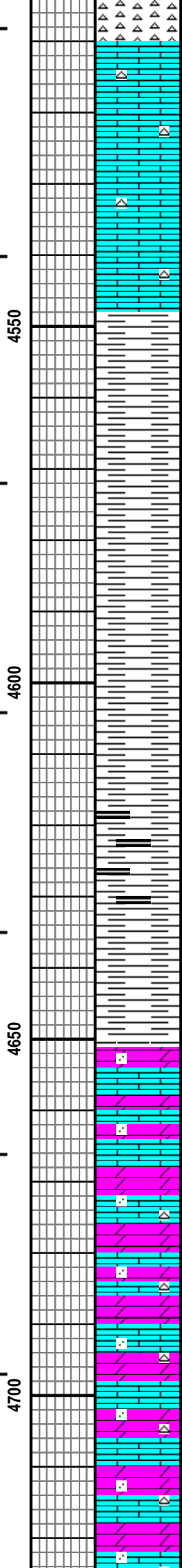
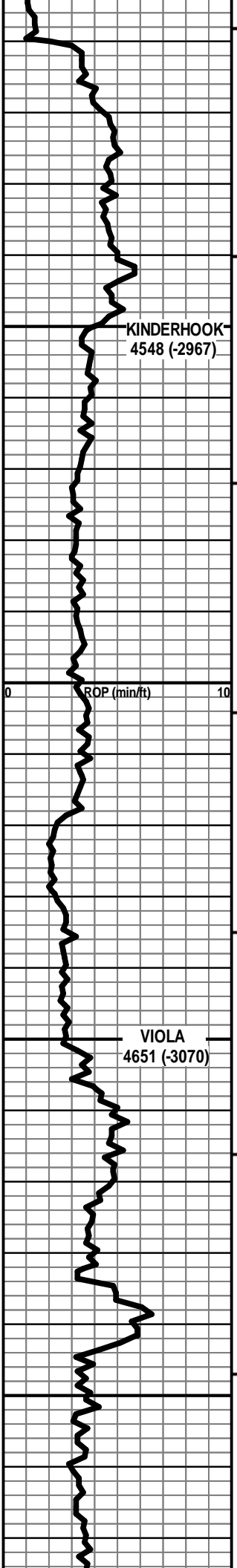
PIPE STRAP @ 4,446'
LONG 1.43'

LS - CRM / TAN, F / M XLN, SL FOSS, SCAT CHKY, PRED DNS, NS W/ CHT - LT GY / WHT W/ ABNT SH - VARICOL (POOR SAMPLE QUAL)

DRLG WITH BIT #4:
7-7/8" CONV RR
JZ-MD30; JETS: 3-14s

CHT - LT GY / WHT / CRM, VIT, NS





LS - TAN / BRN / CRM, VF / F XLN, FOSS IN PT, PRED DNS, NS
W/ CHT - AS ABOVE

KINDERHOOK
4548 (-2967)

SH - GY / GRN / SCAT BLK

SH - GY / BLK / GRN

SH - BLK / GY / GRN

VIOLA
4651 (-3070)

DOLO + LS - LT GY / CRM / TAN, MOT IN PT, F / M XLN, SCAT
C XLN, AREN IN PT, TR VP INTXLN POR, PRED DNS, TR SPTY
GILS STN, PRED NS, NO ODOR, NO FLOUR, NO CUT

DOLO + LS - CRM / TAN / GY, MOT IN PT, VF / M XLN, AREN IN
PT, PRED DNS, NS, NO ODOR W/ CHT - GY / TAN / WHT, VIT

DOLO + LS - TAN / CRM, PRED VF / F XLN, AREN IN PT, PRED
DNS, NS, NO ODOR W/ CHT - TAN / GY / WHT, VIT

