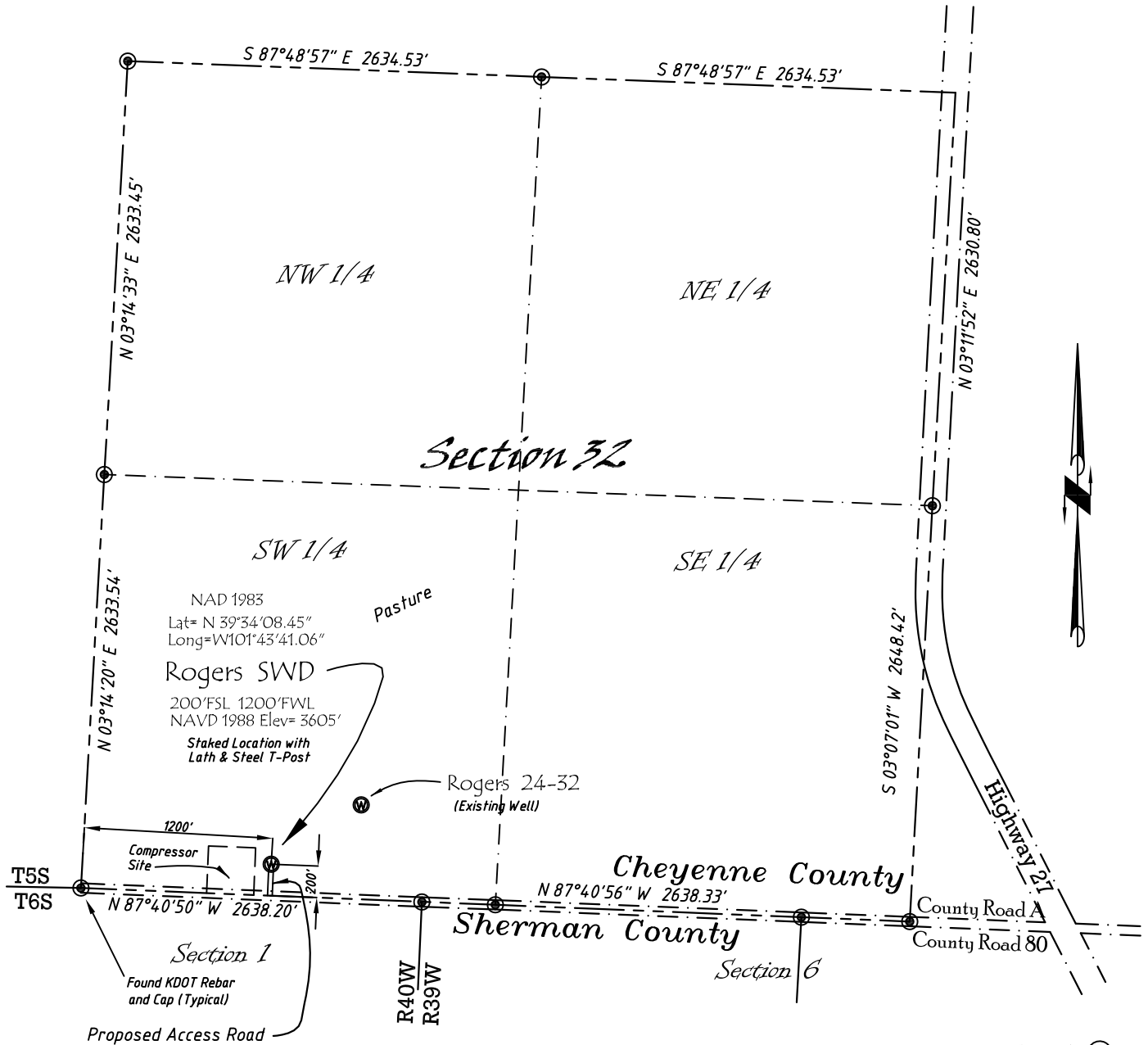


Well Location Map

Rogers SWD

SW 1/4, SW 1/4, Section 32, T5S, R39W, 6th P.M. Cheyenne County, Kansas
 200' FSL - 1200' FWL Elev=3605'



Copyright © 2012

Directions:

From the Intersection of Hwy 27 & Hwy 36 @ Wheeler, KS, Go S on Hwy 27
 Approximately 13 miles, to County Road A, then go W 1 mile, then N 200'
 to Staked location.

This Drawing is for Construction Purposes Only

| | | |
|---------------------------|------------------------|--|
| Noble Energy, Inc. | | |
| DRAWN SP | DATE 5/1/12 | Section 32 |
| FB B78 P38 | EQ HijPro | T5S, R39W, 6th P.M. Cheyenne County, KS |
| SCALE 1"=1000' | SHEET 1 of 1 | PROJECT NO. 1570.205 |

North
Winds
Surveys, Inc.

402 Walnut
Kanorado, KS
785 / 399 / 2551