



TEMPORARY ABANDONMENT WELL APPLICATION

OPERATOR: License# _____
 Name: _____
 Address 1: _____
 Address 2: _____
 City: _____ State: _____ Zip: _____ + _____
 Contact Person: _____
 Phone: (_____) _____
 Contact Person Email: _____
 Field Contact Person: _____
 Field Contact Person Phone: (_____) _____

API No. 15- _____
 Spot Description: _____
 _____ Sec. _____ Twp. _____ S. R. _____ E W
 _____ feet from N / S Line of Section
 _____ feet from E / W Line of Section
 GPS Location: Lat: _____, Long: _____
 County: _____ (e.g. xx.xxxxx) (e.g. -xxx.xxxxx)
 Lease Name: _____ Well #: _____
 Elevation: _____ GL KB
 Well Type: (check one) Oil Gas OG WSW Other: _____
 SWD Permit #: _____ ENHR Permit #: _____
 Gas Storage Permit #: _____
 Spud Date: _____ Date Shut-In: _____

	Conductor	Surface	Production	Intermediate	Liner	Tubing
Size						
Setting Depth						
Amount of Cement						
Top of Cement						
Bottom of Cement						

Casing Fluid Level: _____ How Determined? _____ Date: _____
 Casing Squeeze(s): _____ to _____ w / _____ sacks of cement, _____ to _____ w / _____ sacks of cement. Date: _____
 (top) (bottom) (top) (bottom)
 Do you have a valid Oil & Gas Lease? Yes No
 Depth and Type: Junk in Hole at _____ (depth) Tools in Hole at _____ (depth) Casing Leaks: Yes No Depth of casing leak(s): _____
 Type Completion: ALT. I ALT. II Depth of: DV Tool: _____ w / _____ sacks of cement Port Collar: _____ w / _____ sack of cement
 (depth) (depth)
 Packer Type: _____ Size: _____ Inch Set at: _____ Feet
 Total Depth: _____ Plug Back Depth: _____ Plug Back Method: _____

Geological Data:

Formation Name	Formation Top	Formation Base	Completion Information
1. _____	At: _____	to _____ Feet	Perforation Interval _____ to _____ Feet or Open Hole Interval _____ to _____ Feet
2. _____	At: _____	to _____ Feet	Perforation Interval _____ to _____ Feet or Open Hole Interval _____ to _____ Feet

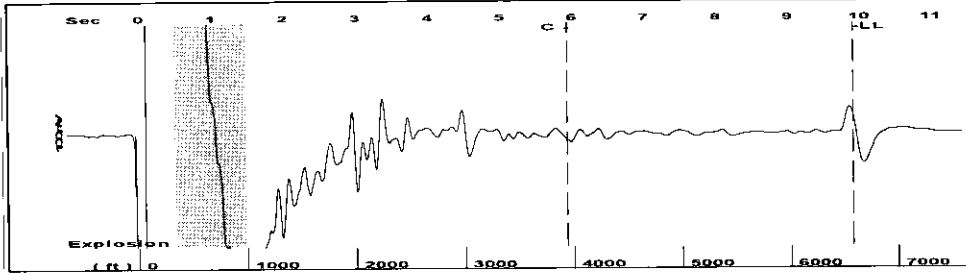
Submitted Electronically

Do NOT Write in This Space - KCC USE ONLY	Date Tested: _____	Results: _____	Date Plugged: _____	Date Repaired: _____	Date Put Back in Service: _____
	Review Completed by: _____	Comments: _____	TA Approved: Yes <input type="checkbox"/> Denied <input type="checkbox"/>		

Mail to the Appropriate KCC Conservation Office:

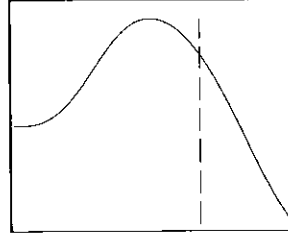
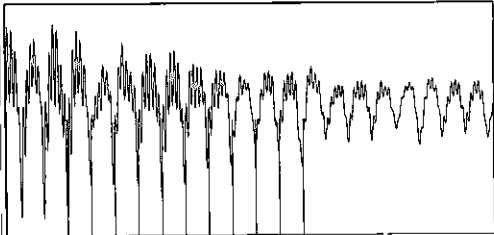
	KCC District Office #1 - 210 E. Frontview, Suite A, Dodge City, KS 67801	Phone 620.225.8888
	KCC District Office #2 - 3450 N. Rock Road, Building 600, Suite 601, Wichita, KS 67226	Phone 316.630.4000
	KCC District Office #3 - 1500 SW Seventh Steet, Chanute, KS 66720	Phone 620.432.2300
	KCC District Office #4 - 2301 E. 13th Street, Hays, KS 67601-2651	Phone 785.625.0550
	Underground Porosity Gas Storage (UPGS) 8200 E. 34th Street Circle N., Suite 1003, Wichita, KS 67226	Phone 316.734.4933

Group: Beat 5 (Liberal) Well: PRINTZ B-2 (acquired on: 03/22/12 12:41:27)



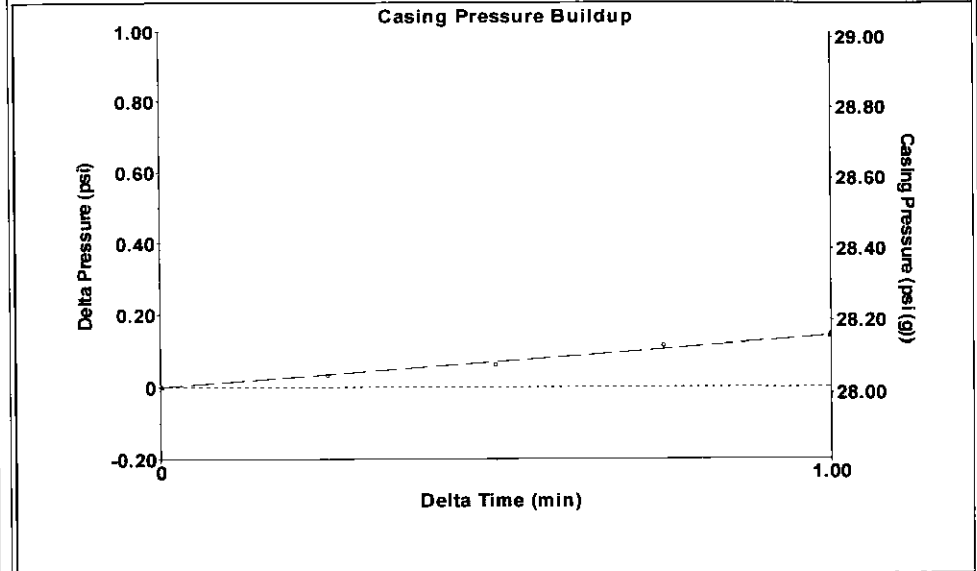
Filter Type	High Pass	Automatic Collar Count	Yes	Time	9.92 sec
Manual Acoustic Velo	1309.92 ft/s	Manual JTS/sec	20.6612	Joints	207.539 Jts
				Depth	6578.98 ft

[0.5 to 1.5 (Sec)]



Analysis Method: Automatic

Group: Beat 5 (Liberal) Well: PRINTZ B-2 (acquired on: 03/22/12 12:41:27)



Change in Pressure	0.14 psi	PT8150	
Change in Time	1.00 min	Range	0 - ? psi

Group: Beat 5 (Liberal) Well: PRINTZ B-2 (acquired on: 03/22/12 12:41:27)

Production Current	Potential	Casing Pressure	Producing
Oil -*-	0.0 BBL/D	28.0 psi (g)	
Water -*-	0.0 BBL/D	Casing Pressure Buildup	Annular Gas Flow
Gas -*-	0.0 Mscf/D	0.140 psi	5 Mscf/D
		1.00 min	% Liquid
		Gas/Liquid Interface Pressure	100 %
		35.4 psi (g)	

IPR Method	Vogel	Liquid Level Depth	6578.98 ft
PBHP/SBHP	0.10	Pump Intake Depth	6302.00 ft
Production Efficiency	97.3	Formation Depth	6222.00 ft
Oil 29 deg API			
Water 1.05 Sp.Gr.H2O			
Gas 0.72 Sp.Gr.AIR			
Acoustic Velocity	1326.41 ft/s		

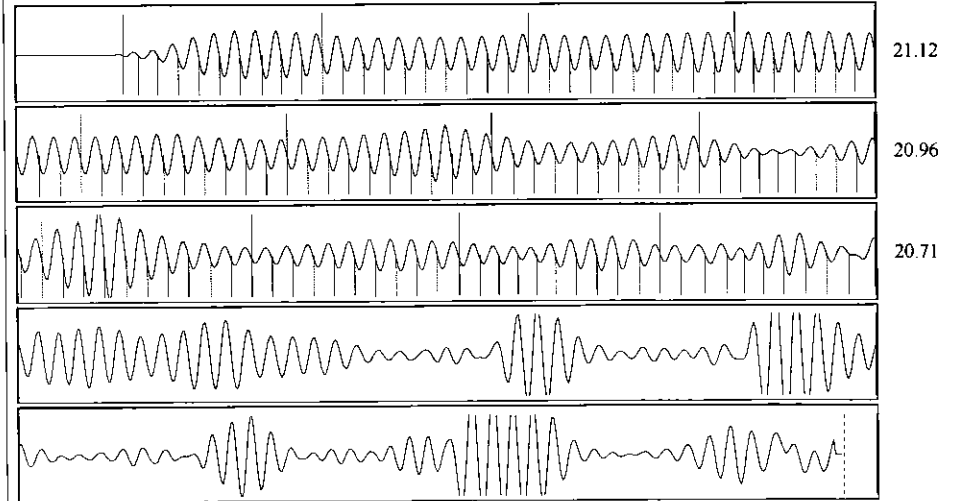
Formation Submergence		
Total Gaseous Liquid Column HT (TVD)	-*- ft	
Equivalent Gas Free Liquid HT (TVD)	-*- ft	

Acoustic Test



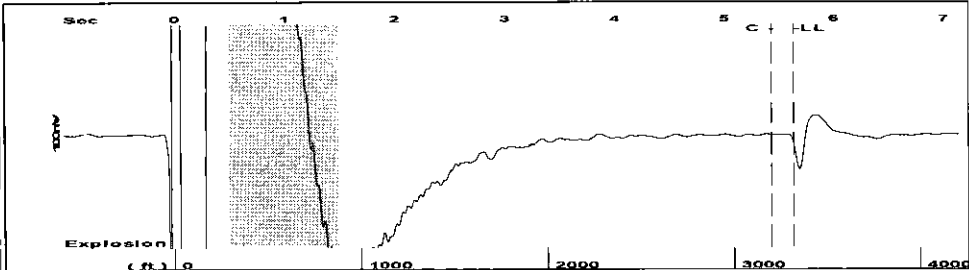
Pump Intake	35.1 psi (g)
Producing BHP	35.0 psi (g)
Static BHP	500.0 psi (g)

Group: Beat 5 (Liberal) Well: PRINTZ B-2 (acquired on: 03/22/12 12:41:27)



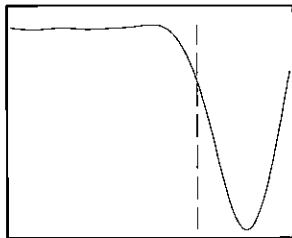
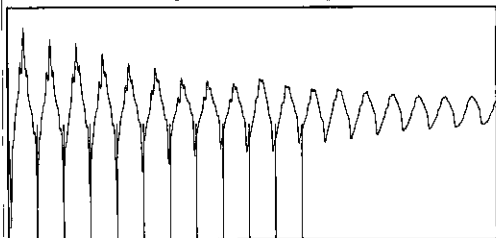
Acoustic Velocity	1326.41 ft/s	Joints counted	119
Joints Per Second	20.9212 jts/sec	Joints to liquid level	207.539
Depth to liquid level	6578.98 ft	Filter Width	18.6612
Automatic Collar Count	Yes	Time to 1st Collar	0.248
			5.936

Group: Beat 4 (Liberal) Well: BLACKMER A-2 (acquired on: 03/22/12 13:35:19)



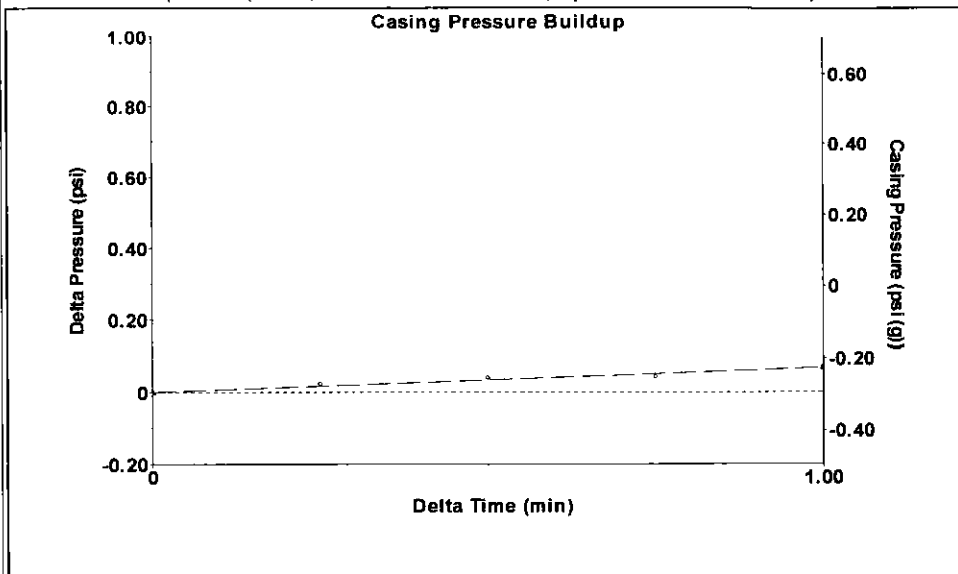
Filter Type High Pass Automatic Collar Count Yes Time 5.636 sec
 Manual Acoustic Velo 1169.74 ft/s Manual JTS/sec 18.4502 Joints 104.775 Jts
 Depth 3321.35 ft

[0.5 to 1.5 (Sec)]



Analysis Method: Automatic

Group: Beat 4 (Liberal) Well: BLACKMER A-2 (acquired on: 03/22/12 13:35:19)



Change in Pressure 0.07 psi PT8150
 Change in Time 1.00 min Range 0 - ? psi

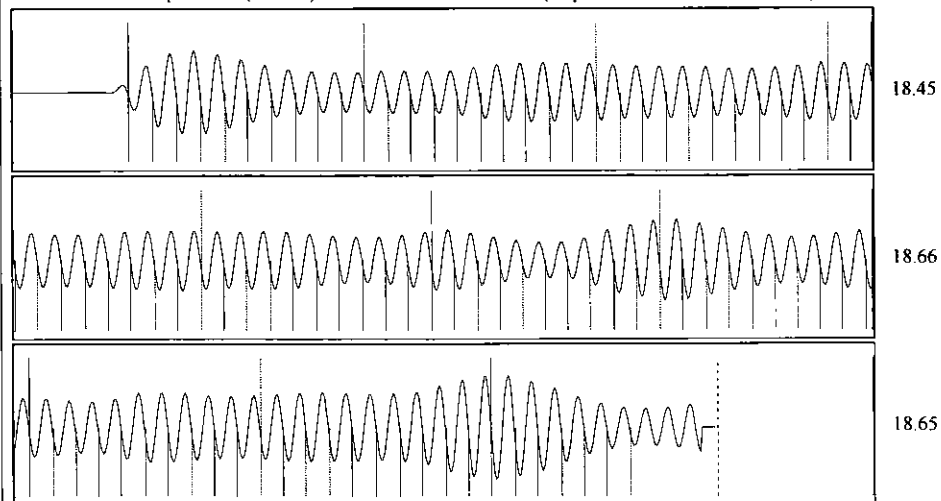
Group: Beat 4 (Liberal) Well: BLACKMER A-2 (acquired on: 03/22/12 13:35:19)

Production			
Current	Potential	Casing Pressure	
Oil -*-	-*- BBL/D	-0.3 psi (g)	
Water -*-	-*- BBL/D	Casing Pressure Buildup	
Gas -*-	-*- Mscf/D	0.068 psi	
		1.00 min	
IPR Method	Vogel	Gas/Liquid Interface Pressure	
PBHP/SBHP	-*-	0.9 psi (g)	
Production Efficiency	0.0		
Oil 29 deg.API		Liquid Level Depth	
Water 1.05 Sp.Gr.H2O		3321.35 ft	
Gas 0.72 Sp.Gr.AIR		Pump Intake Depth	
		6367.00 ft	
Acoustic Velocity	1178.62 ft/s	Formation Depth	
		6365.00 ft	



Producing
 Annular Gas Flow 2 Mscf/D
 % Liquid 90 %
Pump Intake
 1002.1 psi (g)
 Producing BHP 1001.4 psi (g)
 Static BHP 500.0 psi (g)

Group: Beat 4 (Liberal) Well: BLACKMER A-2 (acquired on: 03/22/12 13:35:19)



Acoustic Velocity	1178.62 ft/s	Joints counted	96
Joints Per Second	18.5902 jts/sec	Joints to liquid level	104.775
Depth to liquid level	3321.35 ft	Filter Width	16.4502 20.4502
Automatic Collar Count	Yes	Time to 1st Collar	0.268 5.432