

T34S, R7W, 6th P.M.

SGOMI

Well location, DAVIS 3407 #27-1H, located as shown on the Line Between the SE 1/4 SW 1/4 of Section 27 and the NE 1/4 NW 1/4 of section 34, T34S, R7W, 6th P.M., Harper County, Kansas.

BASIS OF ELEVATION

SPOT ELEVATION LOCATED AT THE NORTHEAST CORNER OF SECTION 22, T33S, R7W, 6th P.M. TAKEN FROM THE ANTHONY, QUADRANGLE, KANSAS, HARPER COUNTY, 7.5 MINUTE QUAD (TOPOGRAPHIC MAP) PUBLISHED BY THE UNITED STATES DEPARTMENT OF THE INTERIOR, GEOLOGICAL SURVEY. SAID ELEVATION IS MARKED AS BEING 1348 FEET.

BASIS OF BEARINGS

BASIS OF BEARINGS IS A G.P.S. OBSERVATION.

1/2" Rebar, 0.3' Below Ground, Steel Post

5/8" Rebar, 0.4' High, Fence Corner

N89°36'31"W - 2656.36' (Meas.)

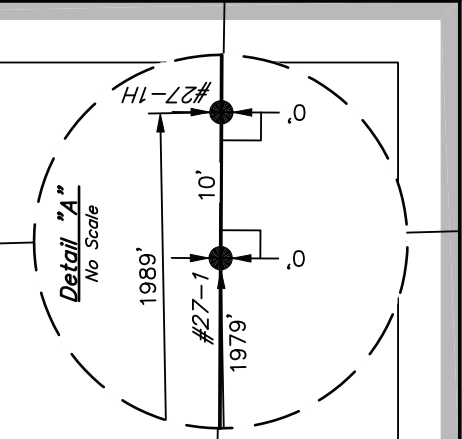
See Detail "A" @ Below Right

DAVIS 3407 #27-1H
Elev. Ungraded Ground = 1403'

NORTH - 5280.00' (G.L.O.)

LINE	BEARING	LENGTH
L1	S33°1'3"22"E	605.62'

34



Bottom Hole

Spike, 0.1' Below Ground, In Road Intersection

S89°45'21"W - 2641.21' (Meas.)

WEST - 2640.00' (G.L.O.)

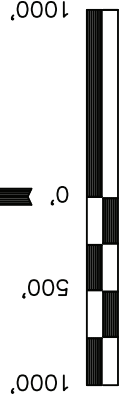
5/8" Rebar, 0.4' High, E-W-W Fence

T34S
T35S

LEGEND:

- = 90° SYMBOL
- = PROPOSED WELL HEAD.
- ▲ = SECTION CORNERS LOCATED.

	NAD 83 (FORMATION ENTRY)	NAD 83 (SURFACE LOCATION)
LATITUDE	= 37°02'58.27" (37.049519)	= 37°03'03.28" (37.050911)
LONGITUDE	= 98°03'58.83" (98.066342)	= 98°04'02.92" (98.067478)
LATITUDE	= 37°02'58.18" (37.049494)	= 37°03'03.19" (37.050886)
LONGITUDE	= 98°03'57.60" (98.066000)	= 98°04'01.69" (98.067136)



SCALE

CERTIFICATE

THIS IS TO CERTIFY THAT THE ABOVE PLAN WAS PREPARED FROM FIELD NOTES OF ACTUAL SURVEYS MADE BY ME OR UNDER MY SUPERVISION AND THAT THE SAME ARE TRUE AND CORRECT TO THE BEST OF MY KNOWLEDGE AND BELIEF.



UNTAH ENGINEERING & LAND SURVEYING

85 SOUTH 200 EAST - VERNAL, UTAH 84078

(435) 789-1017

SCALE	1" = 1000'	DATE SURVEYED:	11-05-11	DATE DRAWN:	12-09-11
PARTY	L.S. K.H. C.C.	REFERENCES	G.L.O. PLAT		
WEATHER	COOL	FILE	SGOMI		

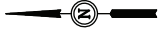
SGOMI

PRODUCTION FACILITY LAYOUT FOR

DAVIS 3407 #27-1 & #27-1H
ON THE LINE BETWEEN THE SE 1/4 SW 1/4
OF SECTION 27 AND THE NE 1/4 NW 1/4 OF
SECTION 34, T34S, R7W, 6TH P.M.

FIGURE #3

SCALE: 1" = 60'
DATE: 12-09-11
DRAWN BY: C.C.
REVISED: 12-13-11
REVISED: 12-14-11



Section 27
Section 34

