

KEVIN L. KESSLER
CONSULTING PETROLEUM GEOLOGIST
(316) 522-7338

OPERATOR : MULL DRILLING COMPANY INC.
LEASE : PATRICIA WELL # : 1 - 31
LOCATION : 1309' FSL & 1268' FWL
SEC: 31 TWP : 16 S RGE : 22 W
COUNTY : NESS STATE : KANSAS

ELEVATION
KB : 2380
GL : 2375
MEASUREMENTS FROM
KB

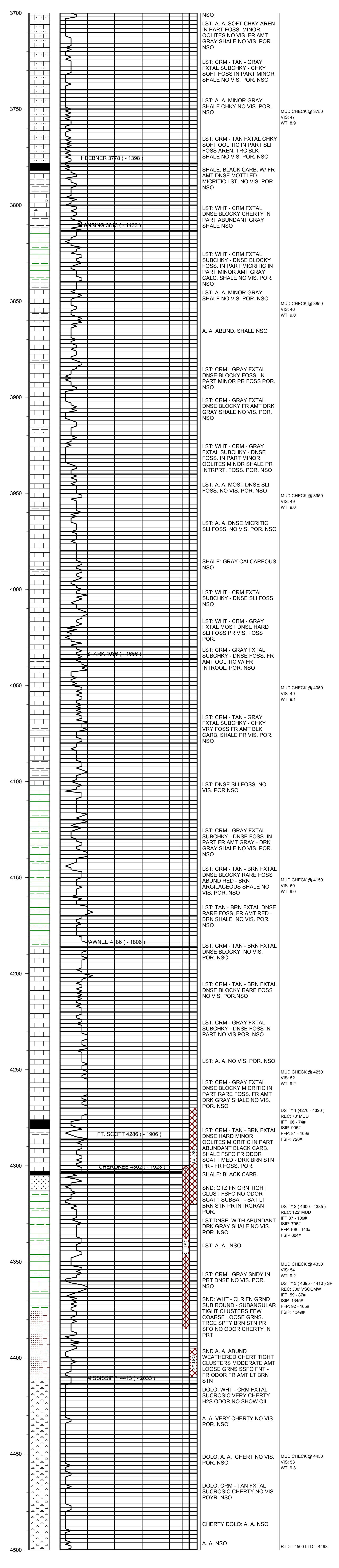
CONTRACTOR : WW DRILLING RIG # 10
COMM : 11 / 29 / 2011 COMP : 12 / 07 / 2011
RTD : 4500 LOG TD : 4498
SAMPLES SAVED FROM : 3700 TO : RTD
GEOLOGICAL SUPERVISION FROM : 3600 TO : RTD
MUD UP : 3500 TYPE MUD : CHEMICAL

CASING RECORD
SURFACE :
8 5/8" @ 220
PRODUCTION :
NONE

ELECTRICAL SURVEYS:
DIL
CNL / CDL
MICRO
SONIC

FORMATION	TOP	LOG	DATUM	TOP	SAMPLE	DATUM	STRUCT. COMP.
HEEBNER	3774		- 1394	3778		- 1398	- 02
LANSING	3813		- 1433	3813		- 1433	- 01
STARK	4036		- 1656	4036		- 1656	- 01
PAWNEE	4186		- 1806	4186		- 1806	- 02
FT. SCOTT	4282		- 1902	4286		- 1906	FLAT
CHEROKEE	4300		- 1920	4303		- 1923	FLAT
MISSISSIPPI	4412		- 2032	4413		- 2033	- 10

REFERENCE WELL FOR STRUCTURAL COMPARISON :
NORTHERN LIGHTS # 2 HIGGINS SEC.06 - T 17 S - R 22 W NESS COUNTY KANSAS



COMMENTS:
DUE TO NEGATIVE DST RESULTS THIS WELL
WAS PLUGGED AS DRY & ABANDONED
KEVIN L. KESSLER