



**UNIT BOUNDARY PLAT**

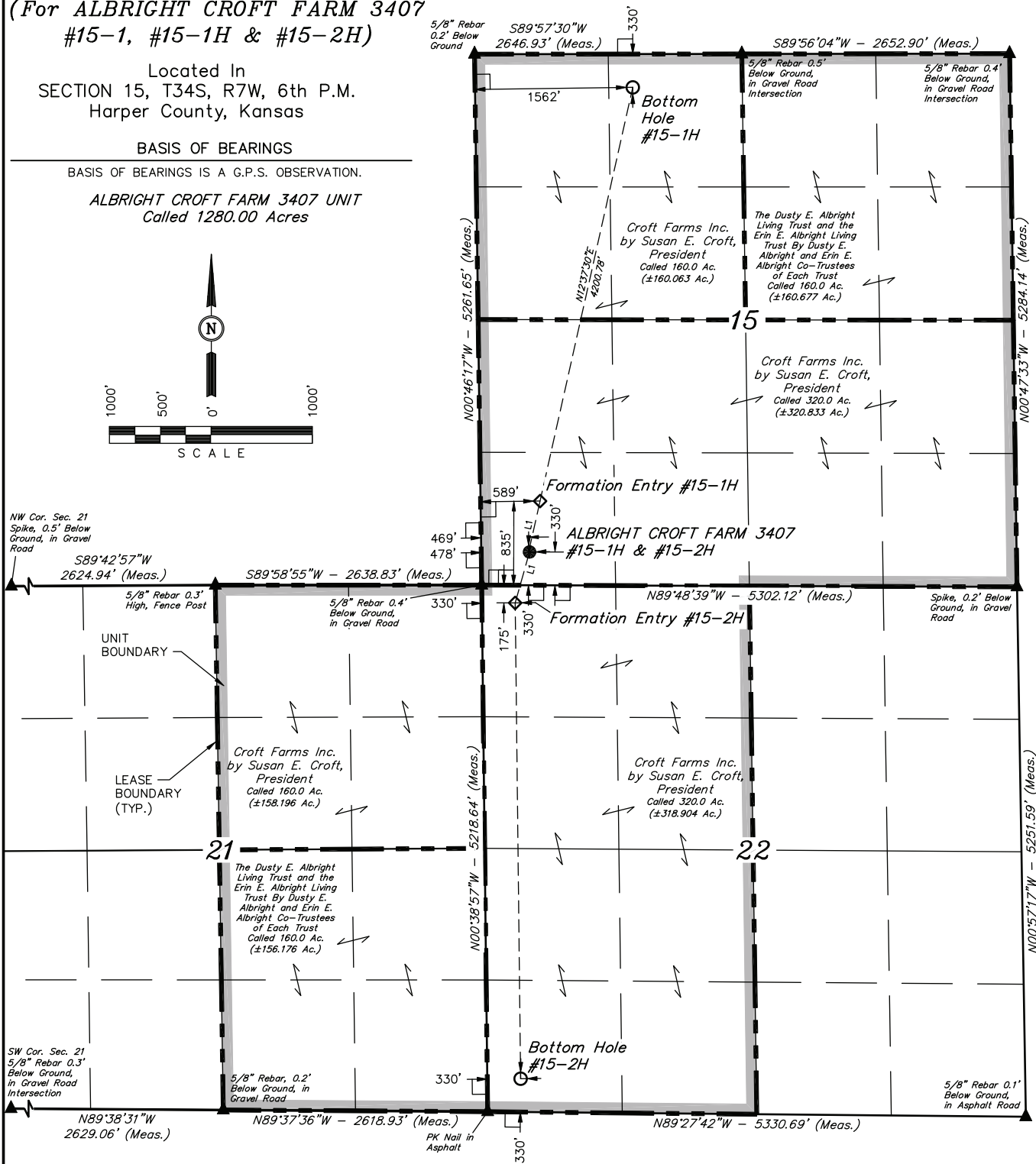
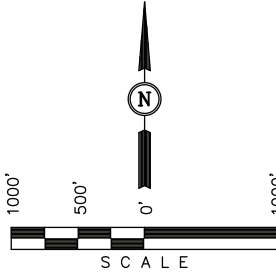
(For ALBRIGHT CROFT FARM 3407  
#15-1, #15-1H & #15-2H)

Located In  
SECTION 15, T34S, R7W, 6th P.M.  
Harper County, Kansas

**BASIS OF BEARINGS**

BASIS OF BEARINGS IS A G.P.S. OBSERVATION.

ALBRIGHT CROFT FARM 3407 UNIT  
Called 1280.00 Acres

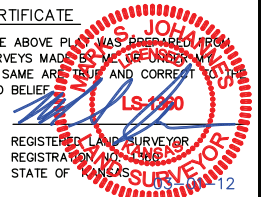


**LEGEND:**

- └ = 90° SYMBOL
- = PROPOSED WELL HEAD.
- ▲ = SECTION CORNERS LOCATED.

**CERTIFICATE**

THIS IS TO CERTIFY THAT THE ABOVE PLAT WAS PREPARED FROM FIELD NOTES OF ACTUAL SURVEYS MADE BY ME UNDER MY SUPERVISION AND THAT THE SAME ARE TRUE AND CORRECT TO THE BEST OF MY KNOWLEDGE AND BELIEF.



REVISED: 02-28-12

**UINTAH ENGINEERING & LAND SURVEYING**  
85 SOUTH 200 EAST - VERNAL, UTAH 84078  
(435) 789-1017

NAD 83 (#15-1H TARGET BOTTOM HOLE) LATITUDE = 37°03'35.77" (37.093269) LONGITUDE = 98°04'10.84" (98.069878)	NAD 83 (#15-1H FORMATION ENTRY) LATITUDE = 37°04'55.24" (37.082011) LONGITUDE = 98°04'22.19" (98.072831)	NAD 83 (#15-1H SURFACE LOCATION) LATITUDE = 37°04'50.25" (37.080626) LONGITUDE = 98°04'23.59" (98.073220)
NAD 27 (#15-1H TARGET BOTTOM HOLE) LATITUDE = 37°05'35.68" (37.093244) LONGITUDE = 98°04'09.61" (98.069336)	NAD 27 (#15-1H FORMATION ENTRY) LATITUDE = 37°04'55.16" (37.081989) LONGITUDE = 98°04'20.97" (98.072492)	NAD 27 (#15-1H SURFACE LOCATION) LATITUDE = 37°04'50.17" (37.080601) LONGITUDE = 98°04'22.36" (98.072879)
NAD 83 (#15-2H TARGET BOTTOM HOLE) LATITUDE = 37°03'58.64" (37.066290) LONGITUDE = 98°04'24.59" (98.073498)	NAD 83 (#15-2H FORMATION ENTRY) LATITUDE = 37°04'45.26" (37.079240) LONGITUDE = 98°04'25.23" (98.073675)	NAD 83 (#15-2H SURFACE LOCATION) LATITUDE = 37°04'50.25" (37.080626) LONGITUDE = 98°04'23.48" (98.073189)
NAD 83 (#15-2H TARGET BOTTOM HOLE) LATITUDE = 37°03'58.56" (37.066265) LONGITUDE = 98°04'23.37" (98.073157)	NAD 27 (#15-2H FORMATION ENTRY) LATITUDE = 37°04'45.18" (37.079216) LONGITUDE = 98°04'24.00" (98.073334)	NAD 27 (#15-2H SURFACE LOCATION) LATITUDE = 37°04'50.17" (37.080602) LONGITUDE = 98°04'22.25" (98.072848)

SCALE 1" = 1000'	DATE SURVEYED: 10-05-11	DATE DRAWN: 12-07-11
PARTY L.S. K.H. C.C.	REFERENCES G.L.O. PLAT	
WEATHER COOL	FILE SGOMI	

SGOMI

PRODUCTION FACILITY LAYOUT FOR

ALBRIGHT CROFT FARM 3407 #15-1, #15-1H & #15-2H  
SECTION 15, T34S, R7W, 6th P.M.  
SW 1/4 SW 1/4

FIGURE #3

SCALE: 1" = 60'  
DATE: 11-04-11  
DRAWN BY: C.C.  
REVISED: 12-14-11

