

Unit Description
Wesley 1-10H Well
Harper, County, KS

SandRidge has leases covering 1046.76 nma in All of Section 10, Township 35S, Range 7W and All of Section 15, Township 35 South, Range 7 West and we intend to unitize this 1046.76 into the Wesley Unit.

GEOLOGICAL PROGNOSIS

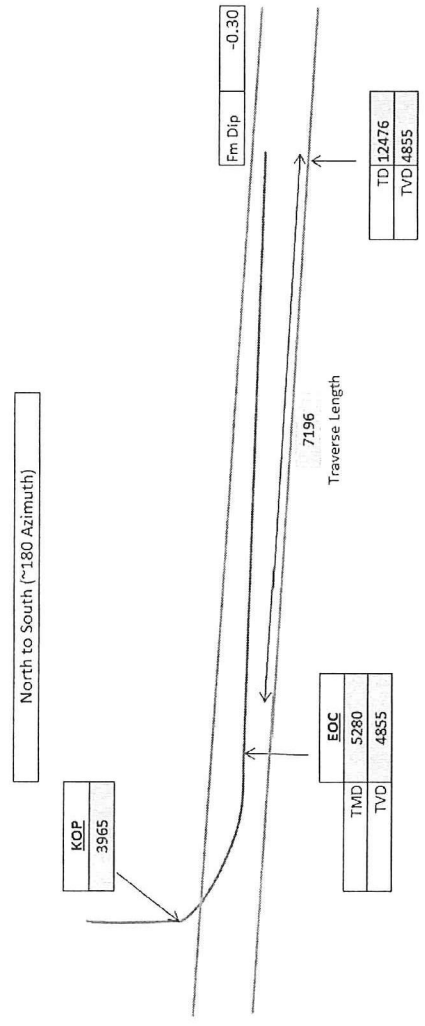
SandRidge Energy, Inc.
 Kansas – Waldron
 Tammy Alcorn - Geologist
 Stacey Bryant - Landman

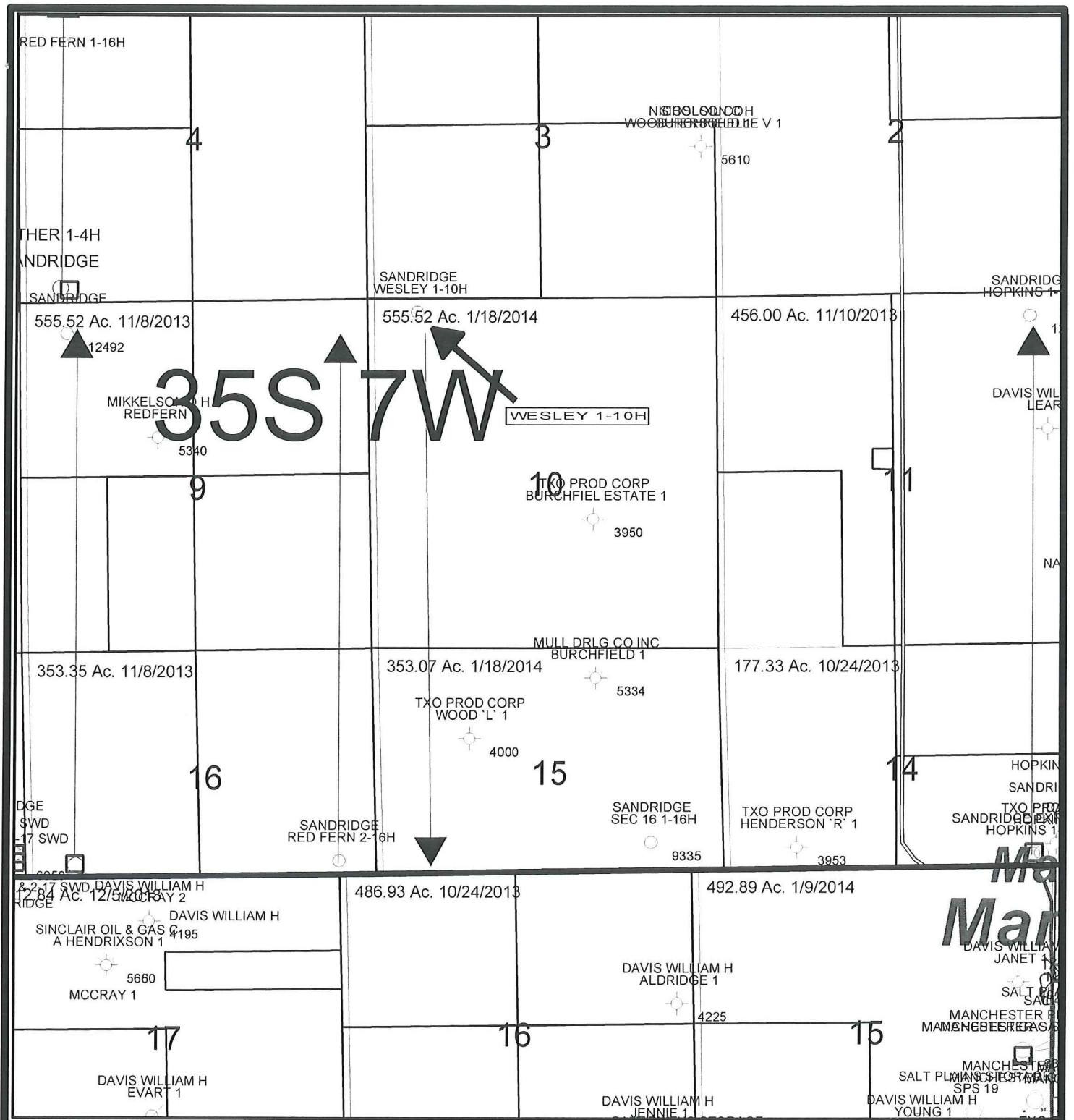
Target Line	4,855
TVD @ 0' VS	90.00
INC	

Footages	
FNL	250
FSL	-2,980

Total VS	8,010.00
EOC (MD)	5,279.67
EOC (TVD)	4,855.00
KOP	3,965.38
Traverse Length	7,196.12
TD (MD)	12,475.78
TVD @ TD	4,855.00
TVD displacement f/ EOC to TD	0.00

Operator
 SandRidge Energy
Well Name and Number
 Wesley 1-10H
Well Surface Location
 10-355-7W 250' FNL 660' FWL
Well Bottom Hole Location
 15-355-7W 330' FSL 660' FWL
County and State
 Harper County, Kansas



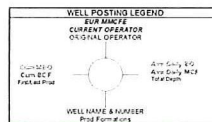


1 inch = 2000 feet

2000 0 2000 ft



- PRODUCING FORMATION LEGEND**
- Topanawhagen
 - Comanche
 - Osage
 - Red Fork
 - Inoka
 - Wameca
 - Chester
 - Meramec
 - Huron
 - Permian (Eola-Simp-Ash)

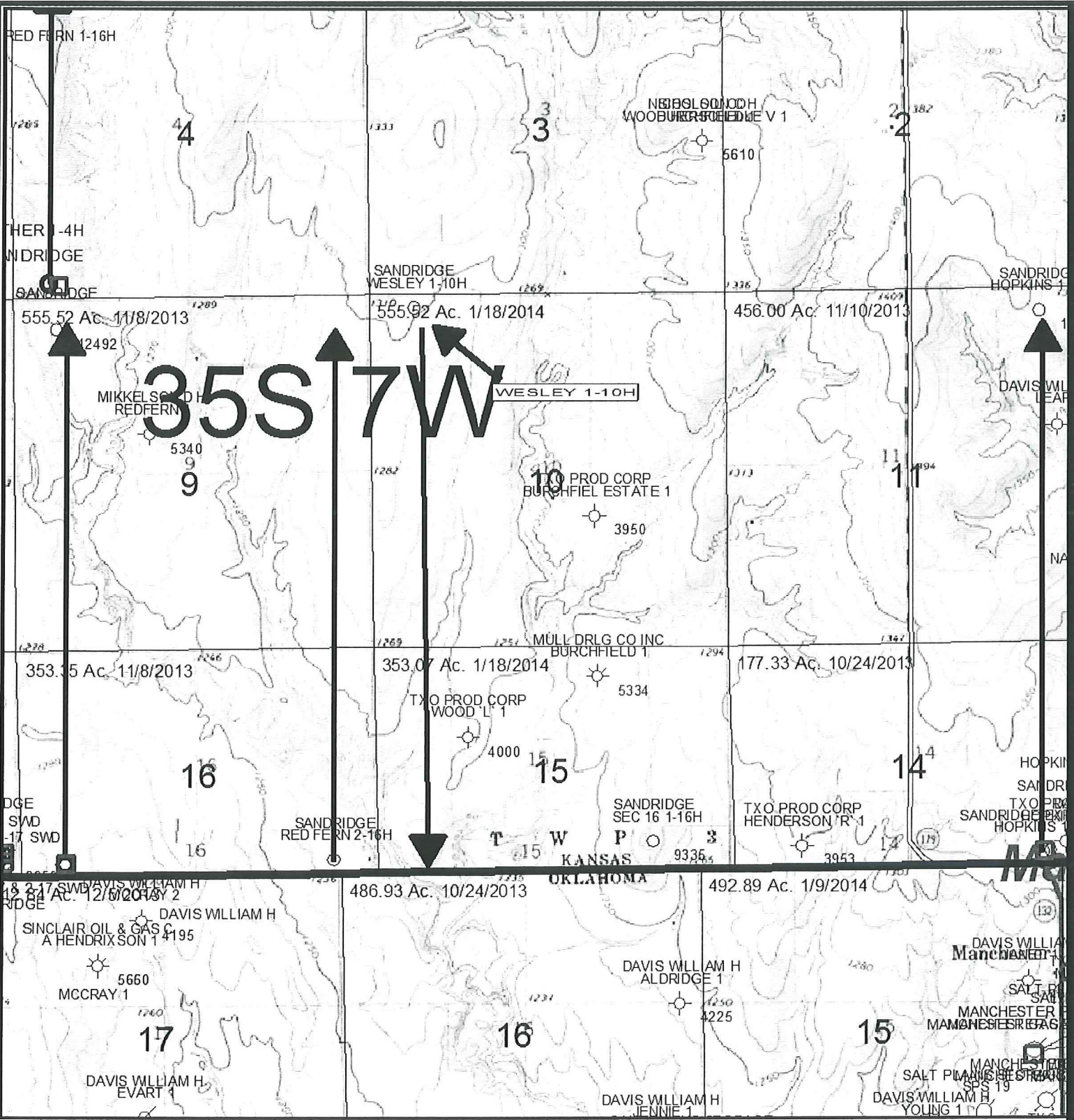


SANDRIDGE
THE POWER OF US

WALDRON
 Wesley 1-10H 10/15-35S-7W
 Harper County, Kansas
 Production Map

Wesley 1-10/Prod/tp.gmp

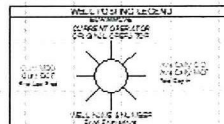
Date: 10/February, 2012 Geol: T. Alcorn



1 inch = 2000 feet



- SYMBOLS FOR WELL LOGS**
- Production
 - Test
 - Completion
 - Cement
 - Plug
 - Abandon
 - Shut-in
 - Incomplete
 - Unknown
 - Production/Completion



WALDRON
 Wesley 1-10H 10'15-36S-7W
 Harper County, Kansas
 Topographic Map
 C1 10

Date: 10 February, 2012 Geol: T. Alcorn

Well: 1-10-Top01.s2.grip

RED FERN 1-16H

4

3

2

NEBELSON WOODBURN ESTATE V 1
5610

ANDRIDGE
SANDRIDGE

SANDRIDGE
WESLEY 1-10H

SANDRIDGE
HOPKINS 1-

555.52 Ac. 11/8/2013

555.52 Ac. 1/18/2014

456.00 Ac. 11/10/2013

MIKKELSON REDFERN

35S 7W

WESLEY 1-10H

DAVIS WILLIAM H LEAR

9

TXO PROD CORP BURCHFIELD ESTATE 1

11

353.35 Ac. 11/8/2013

353.07 Ac. 1/18/2014

177.33 Ac. 10/24/2013

MULL DR LG CO INC BURCHFIELD 1

TXO PROD CORP WOOD 'L' 1

16

15

14

DGE SWD -17 SWD

SANDRIDGE RED FERN 2-16H

SANDRIDGE SEC 16 1-16H

TXO PROD CORP HENDERSON 'R' 1

HOPKINS SANDRI TXO PROD SANDRIDGE HOPKINS 1

2-17 SWD DAVIS WILLIAM H RIDGE

486.93 Ac. 10/24/2013

492.89 Ac. 1/9/2014

SINCLAIR OIL & GAS A HENDRIXSON 1

17

16

15

DAVIS WILLIAM H ALDRIDGE 1

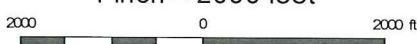
DAVIS WILLIAM H JANET SALT PL MAMANGBESRETAGS

DAVIS WILLIAM H EVART 1

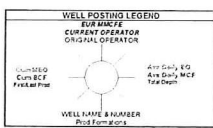
DAVIS WILLIAM H JENNIE 1

SALT PL MAMANGBESRETAGS SPS 19 MANCHESTER DAVIS WILLIAM H YOUNG 1

1 inch = 2000 feet



- PRODUCTION FORMATION LEGEND**
- Torrance/Vegetian
 - Cottage Grove
 - Okeup
 - Red Fork
 - Sand
 - Morrow
 - Chester
 - Maramec
 - Huron
 - Pre-Huron (Folsom/Simpark)



SANDRIDGE
THE POWER OF US

WALDRON
Wesley 1-10H 10/15-35S-7W
Harper County, Kansas
Subsea Top Mississippi Lime Structure Map
C1.20
Wesley 1-10H-MissStr.gmp

Date: 10 February, 2012 Geol: T. Alcorn

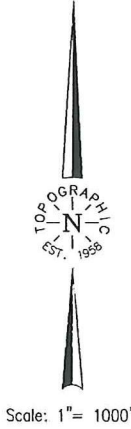
TOPOGRAPHIC LAND SURVEYORS

6709 NORTH CLASSEN BLVD., OKLA. CITY, OKLA. 73116 * LOCAL (405) 843-4847 * OUT OF STATE (800) 654-3219
 Certificate of Authorization No. LS-99, Exp. Dec. 31, 2013

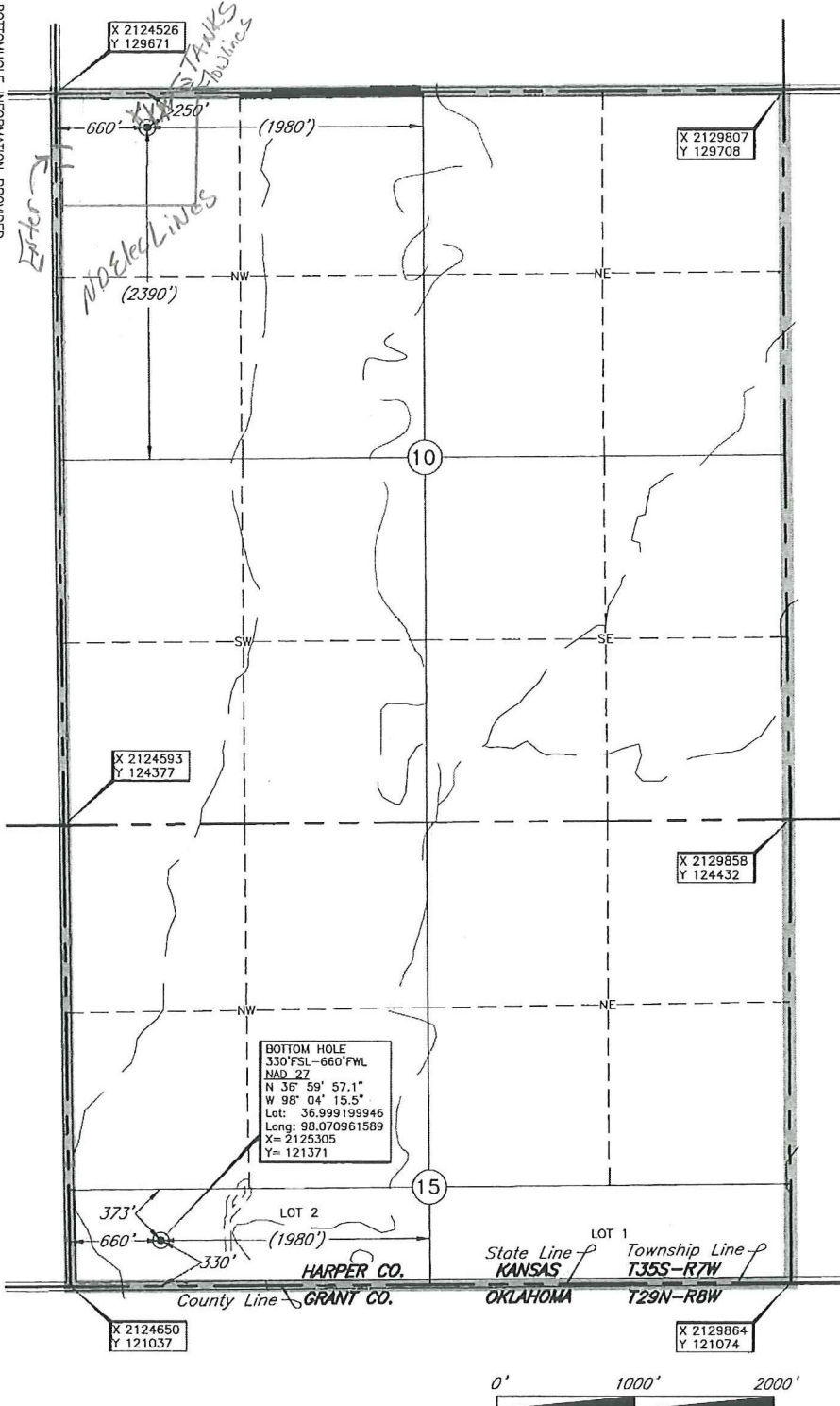
HARPER

County, Kansas

250'FNL-660'FWL Section 10 Township 35S Range 7W P.M.



BOTTOMHOLE INFORMATION PROVIDED BY OPERATOR LISTED, NOT SURVEYED. BEARING AND/OR DISTANCE TO BOTTOMHOLE ARE CALCULATED FROM COORDINATES ARE FROM LAND GRD. NOT SURVEYED



This location has been very carefully staked on the ground according to the best official survey records, maps, and photographs available to us, but its accuracy is not guaranteed. Review this plat and notify us immediately of any possible discrepancy.

Operator: SANDRIDGE ENERGY, INC.

Lease Name: WESLEY

Well No.: 1-10H

ELEVATION: 1300' Gr. at Stake

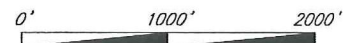
Distances shown in (parenthesis) are calculated based upon the Quarter Section being 2640 feet; those shown in [brackets] are based on GLO (General Land Office) distances and have not been measured.

Topography & Vegetation: Loc. fall in terraced wheat field.

Good Drill Site? Yes

Best Accessibility to Location: From North off county road

Distance & Direction: From St Hwy 179 @ Oklahoma-Kansas State Line, go ±1.5 mi. West on State Line, then ±1.7 mi. North to the Northwest corner of Sec. 10-135S-R7W.



DATUM: NAD-27

LAT: 37°01'16.8"N

LONG: 98°04'16.4"W

LAT: 37.021323420°N

LONG: 98.071231930°W

STATE PLANE COORDINATES: (US Feet)

ZONE: KS SOUTH

X: 2125189

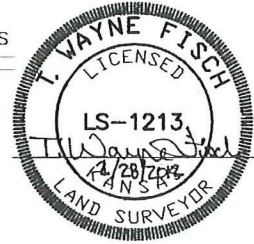
Y: 129426

Date of Drawing: Feb. 28, 2012
 Invoice # 180110 Date Staked: Feb. 25, 2012 IS

CERTIFICATE:

I, T. Wayne Fisch a Kansas Licensed Land Surveyor and an authorized agent of Topographic Land Surveyors, do hereby certify that the above described well location was surveyed and staked on the ground as shown herein.

Oklahoma Lic. No. 1213



TOPOGRAPHIC LAND SURVEYORS

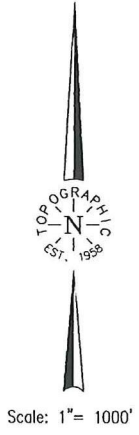
6709 NORTH CLASSEN BLVD., OKLA. CITY, OKLA. 73116 • LOCAL (405) 843-4847 • OUT OF STATE (800) 654-3219

Certificate of Authorization No. LS-99, Exp. Dec. 31, 2013

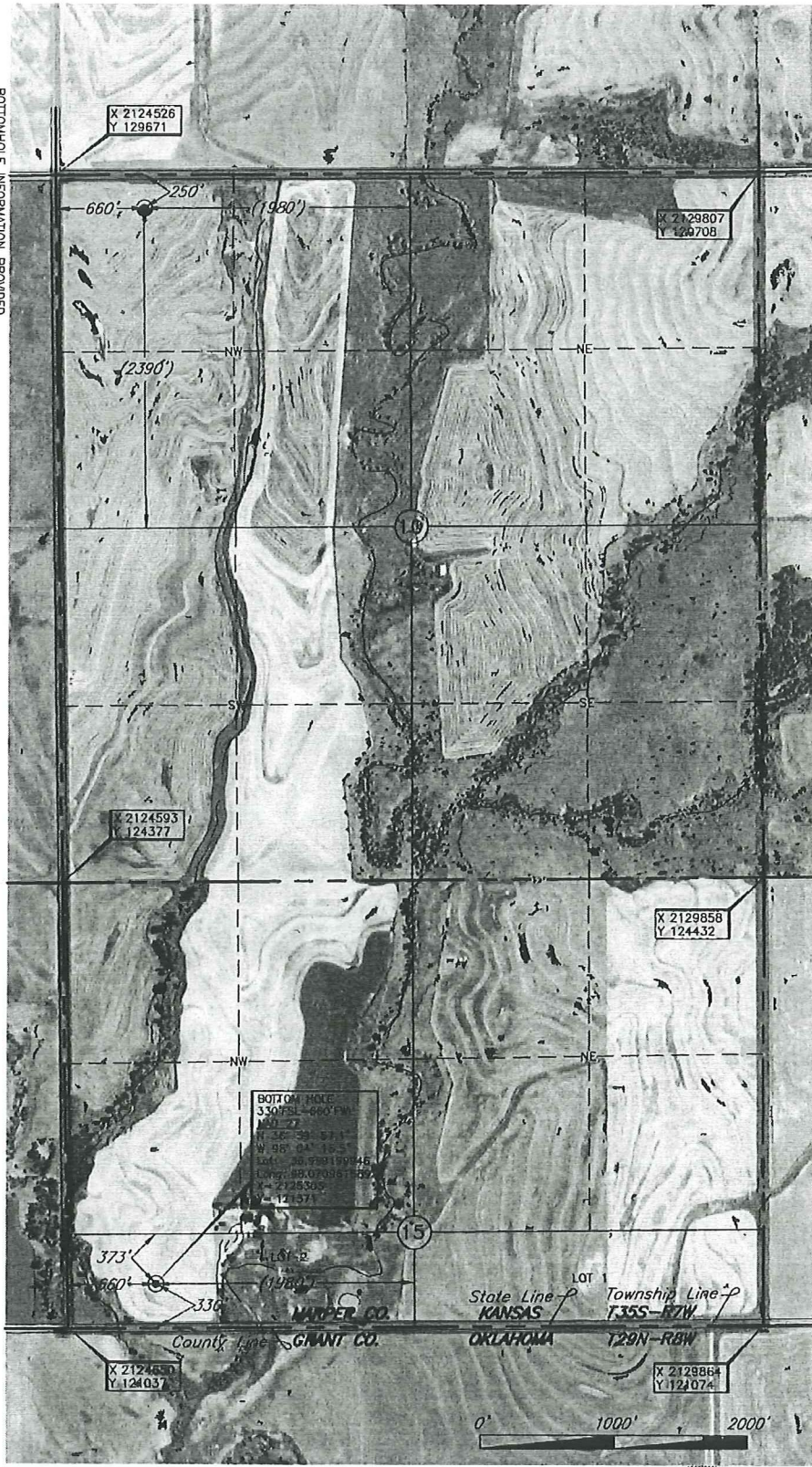
HARPER

County, Kansas

250' FNL - 660' FWL Section 10 Township 35S Range 7W P.M.



BOTTOMHOLE INFORMATION PROVIDED BY OPERATOR LISTED. NOT SURVEYED. BEARING AND/OR DISTANCE TO BOTTOMHOLE ARE CALCULATED. DISTANCES ARE FROM LAND GRIP, NOT SURVEYED



This location has been very carefully staked on the ground according to the best of official survey records, maps, and photographs available to us, but its accuracy is not guaranteed. Review this plat and notify us immediately of any possible discrepancy.

Operator: SANDRIDGE ENERGY, INC.

Lease Name: WESLEY

Topography & Vegetation Loc. fell in terraced wheat field.

Good Drill Site? Yes Reference Stakes or Alternate Location Stakes Set None

Best Accessibility to Location From North off county road

Distance & Direction From St Hwy 179 @ Okichoma-Kansas State Line, go ±1.5 mi. West on State Line, then ±1.7 mi. North to the Northwest corner of Sec. 10-T35S-R7W.

Well No.: 1-10H

ELEVATION: 1300' Gr. at Stake

Distances shown in (parenthesis) are calculated based upon the Quarter Section being 2640 feet those shown in [brackets] are based on GLO (General Land Office) distances and have not been measured.

Date of Drawing: Feb. 28, 2012

Invoice # 180110 Date Staked: Feb. 25, 2012 IS

CERTIFICATE:

I, T. Wayne Fisch a Kansas Licensed Land Surveyor and an authorized agent of Topographic Land Surveyors, do hereby certify that the above described well location was surveyed and staked on the ground as shown herein.

Oklahoma Lic. No. 1213

DATUM: NAD-27

LAT: 37°01'16.8"N

LONG: 98°04'16.4"W

LAT: 37.021323420°N

LONG: 98.071231930°W

STATE PLANE

COORDINATES: (US Feet)

ZONE: KS SOUTH

X: 2125189

Y: 129426

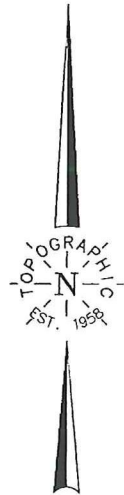
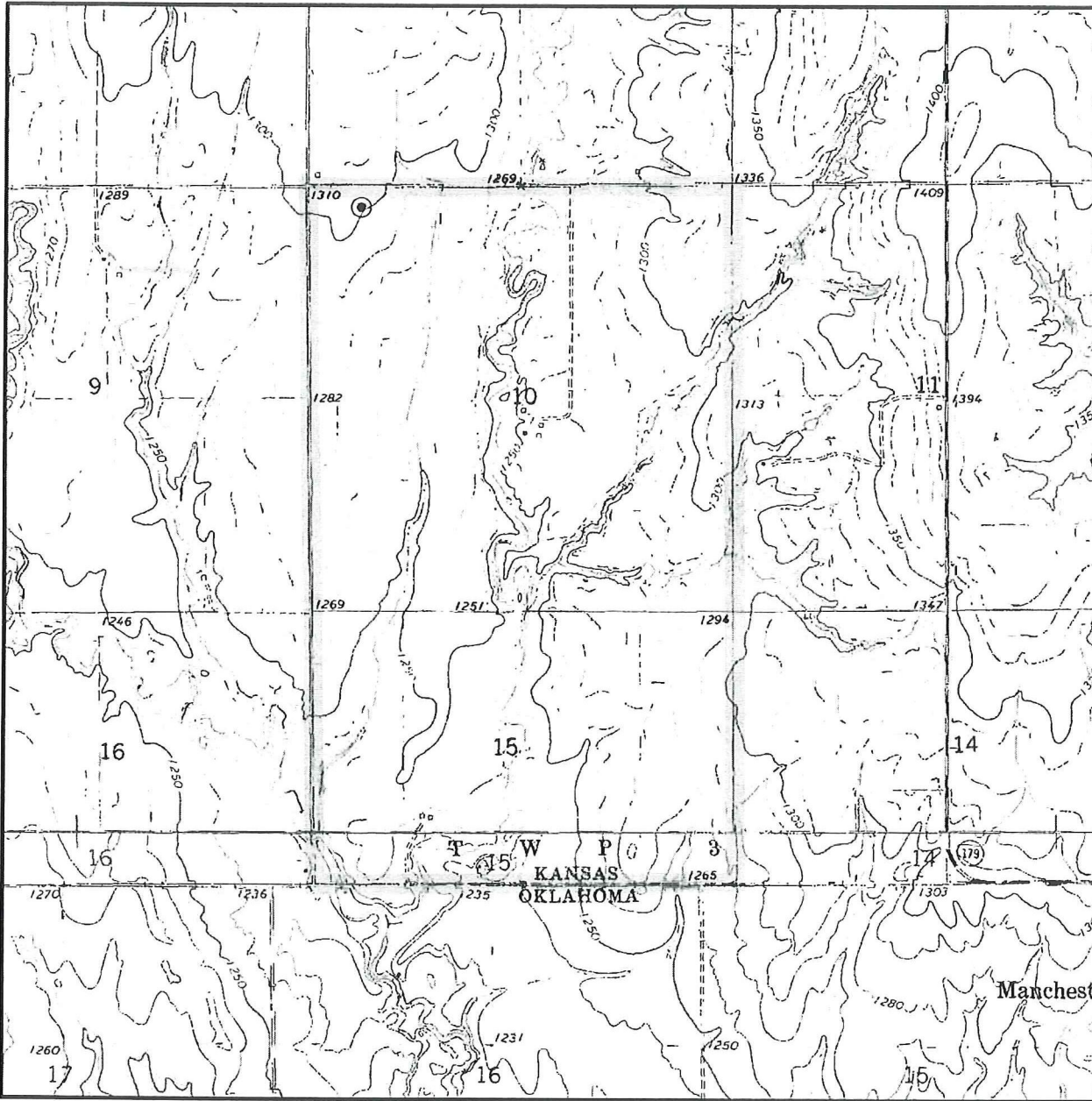
This information was gathered with a GPS receiver with sub-meter accuracy.



TOPOGRAPHIC LAND SURVEYORS

Surveying and Mapping for the Energy Industry
6709 North Classen Blvd. Oklahoma City, OK 73116 www.topographic.com
Telephone Numbers: Local (405) 843-4847 Toll Free (800) 654-3219

LOCATION & ELEVATION VERIFICATION MAP



Sec. 10 Twp. 35S Rng. 7W

County HARPER State KS

Operator SANDRIDGE ENERGY, INC.

Description 250' FNL - 660' FWL

Lease WESLEY 1-10H

Elevation 1300' Gr. at Stake

U.S.G.S. Topographic
Quadrangle Map SPRING, KS

Above Background Data from
U.S.G.S. Topographic Map
Scale: 1"=2000'

Contour Interval 10'

This location has been very carefully staked on the ground according to the best official survey records, maps and photographs available to us, but its accuracy is not guaranteed. When elevation is shown hereon it is the ground elevation of the location stake.
Review this plat and inform us immediately of any possible discrepancy.

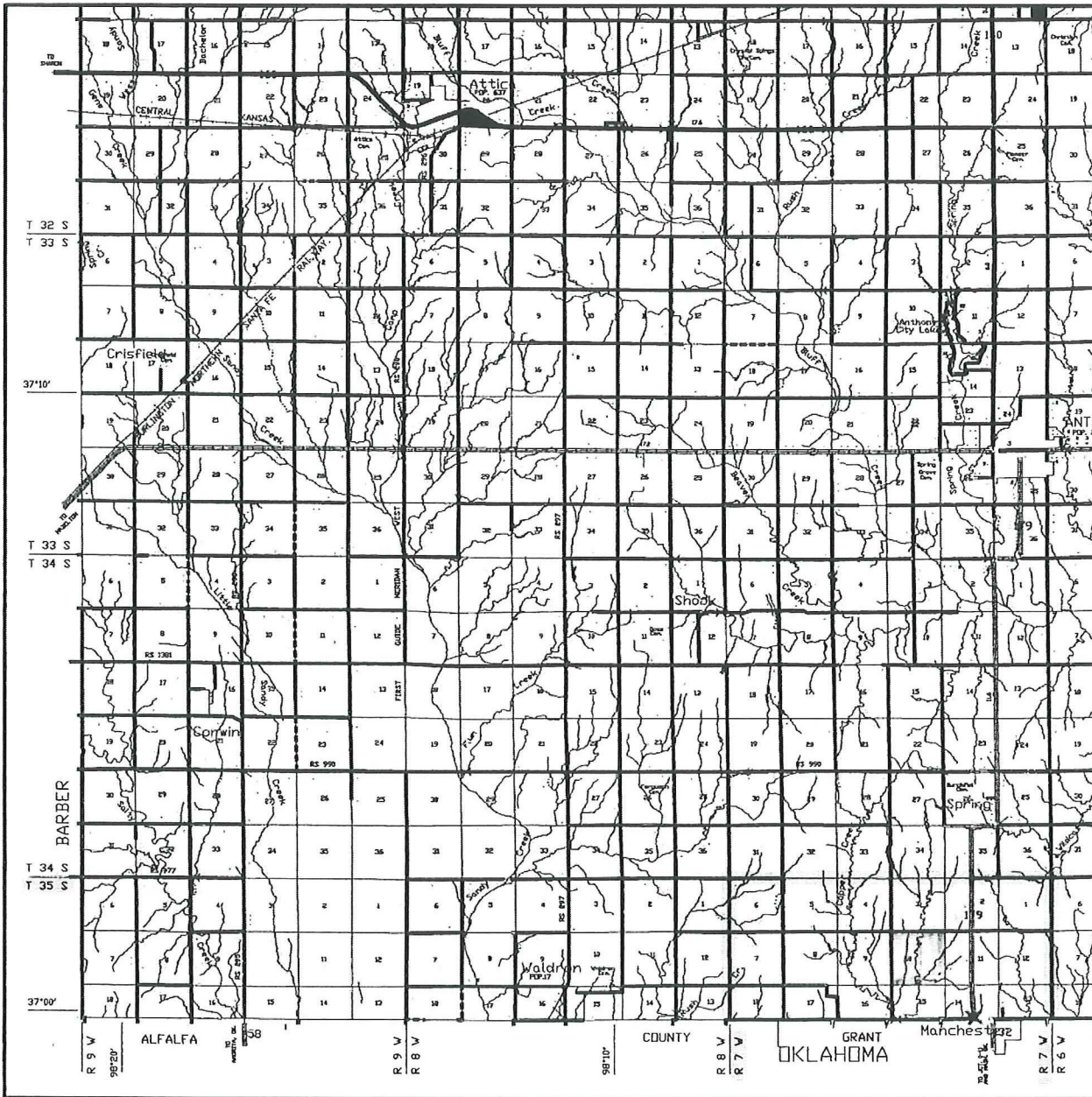


Feb. 25, 2012

TOPOGRAPHIC LAND SURVEYORS

Surveying and Mapping for the Energy Industry
 6709 North Classen Blvd. Oklahoma City, OK 73116 www.topographic.com
 Telephone Numbers: Local (405) 843-4847 Toll Free (800) 654-3219

VICINITY MAP



Scale: 1" = 3 Miles

Sec. 10 Twp. 35S Rng. 7W

County HARPER State KS

Operator SANDRIDGE ENERGY, INC.

