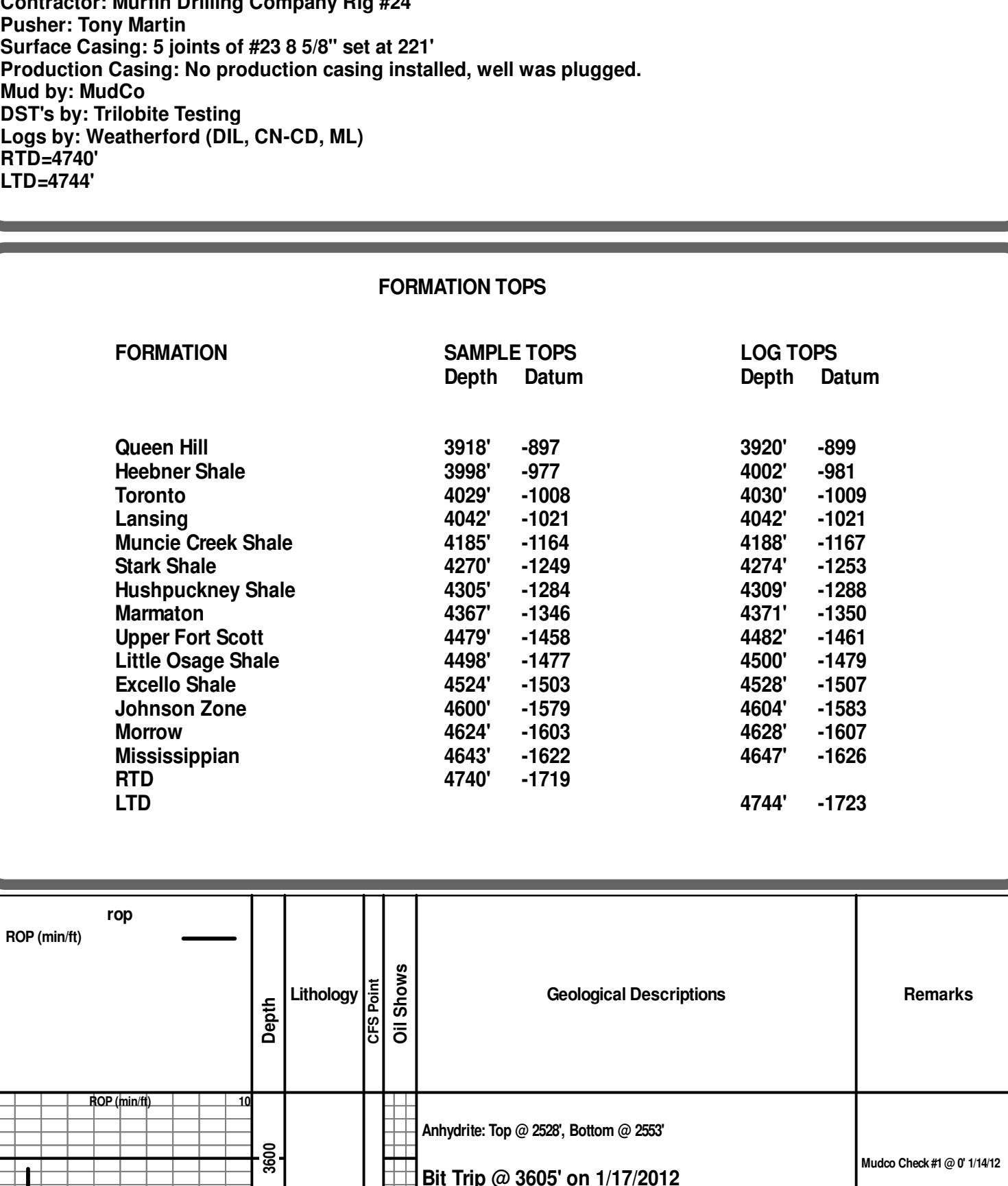


**Scale 1:240 (5"=100') Imperial
Measured Depth Log**

Well Name: #1-25 A-K
Location: 1626' FSL, 2582' FWL, SE SE NE SW, SECTION 25-12S-32W
License Number: API: 15-109-21062 **Region:** Logan County
Spud Date: 1/14/2012 **Drilling Completed:** 1/24/2012
Surface Coordinates: LAT 38.9793480
LONG -100.8229847
Bottom Hole: Vertical hole
Coordinates:
Ground Elevation (ft): 3016' **K.B. Elevation (ft):** 3021'
Logged Interval (ft): 3800' **To:** RTD **Total Depth (ft):** 4740'
Formation: Mississippian **RTD=4740'**
Type of Drilling Fluid: Chemical
 Printed by WellSight Log Viewer from WellSight Systems 1-800-447-1534 www.WellSight.com

GEOLOGIST

Name: John Goldsmith
Company: John Goldsmith Wellsite Service
Address: 322 Greenwood Ct.
 Cheney, KS 67025
 316-640-0236

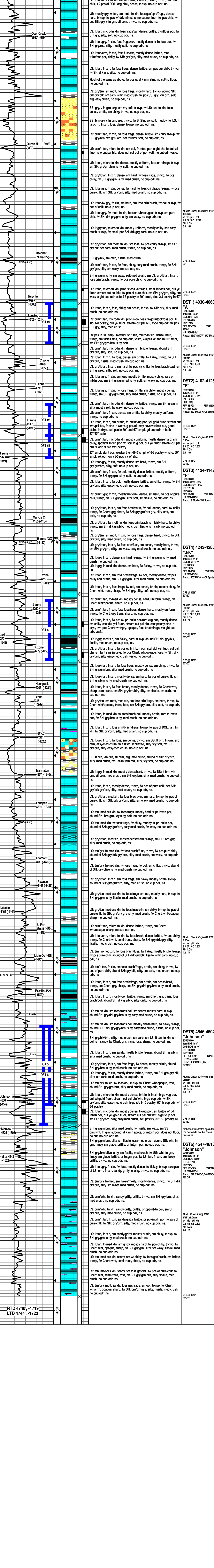


COMMENTS

Contractor: Murlin Drilling Company Rig #24
Pusher: Tony Martin
Surface Casing: 5 joints of #23 8 5/8" set at 221'
Production Casing: No production casing installed, well was plugged.
Mud by: MudCo
DSTs by: Tribolite Testing
Logs by: Weatherford (DIL, CN-CD, ML)
RTD=4740'
LTD=4744'

FORMATION TOPS

FORMATION	SAMPLE TOPS		LOG TOPS	
	Depth		Depth	Datum
Queen Hill	3918'	-897	3920'	-899
Heebner Shale	3998'	-977	4002'	-981
Toronto	4029'	-1008	4037'	-1009
Lansing	4042'	-1021	4042'	-1021
Muncie Creek Shale	4185'	-1164	4188'	-1167
Stark Shale	4270'	-1249	4274'	-1253
Hushpuckey Shale	4305'	-1284	4309'	-1288
Marmaton	4367'	-1346	4371'	-1350
Upper Fort Scott	4479'	-1458	4482'	-1461
Little Osage Shale	4498'	-1477	4500'	-1479
Excello Shale	4524'	-1503	4528'	-1507
Johnson Zone	4600'	-1579	4604'	-1583
Morrow	4624'	-1603	4628'	-1607
Mississippian	4643'	-1622	4647'	-1626
RTD	4740'	-1719		
LTD			4744'	-1723



Remarks:
 Mudco Check #1 @ 7 1/4" 11212
 6:59am
 wt vs pH ch
 8.0 30 7.0 11.000
 FR LCM
 NC TR
 Mudco Check #2 @ 2582' 11212
 6:59am
 wt vs pH ch
 8.0 30 7.0 11.000
 FR LCM
 NC TR
 Mudco Check #3 @ 3488' 11212
 6:59am
 wt vs pH ch
 8.0 30 7.0 11.000
 FR LCM
 NC TR
 Mudco Check #4 @ 3872' 11212
 6:59am
 wt vs pH ch
 8.0 30 7.0 11.000
 FR LCM
 NC TR
 Mudco Check #5 @ 4007' 11212
 6:59am
 wt vs pH ch
 8.0 30 7.0 11.000
 FR LCM
 NC TR
 Mudco Check #6 @ 4287' 12212
 6:59am
 wt vs pH ch
 8.0 30 7.0 11.000
 FR LCM
 NC TR
 Mudco Check #7 @ 4287' 12212
 6:59am
 wt vs pH ch
 8.0 30 7.0 11.000
 FR LCM
 NC TR
 Mudco Check #8 @ 4607' 12212
 6:59am
 wt vs pH ch
 8.0 30 7.0 11.000
 FR LCM
 NC TR
 Mudco Check #9 @ 4607' 12212
 6:59am
 wt vs pH ch
 8.0 30 7.0 11.000
 FR LCM
 NC TR
 Mudco Check #10 @ 4688' 12212
 6:59am
 wt vs pH ch
 8.0 30 7.0 11.000
 FR LCM
 NC TR
 Mudco Check #11 @ 4888' 12212
 6:59am
 wt vs pH ch
 8.0 30 7.0 11.000
 FR LCM
 NC TR