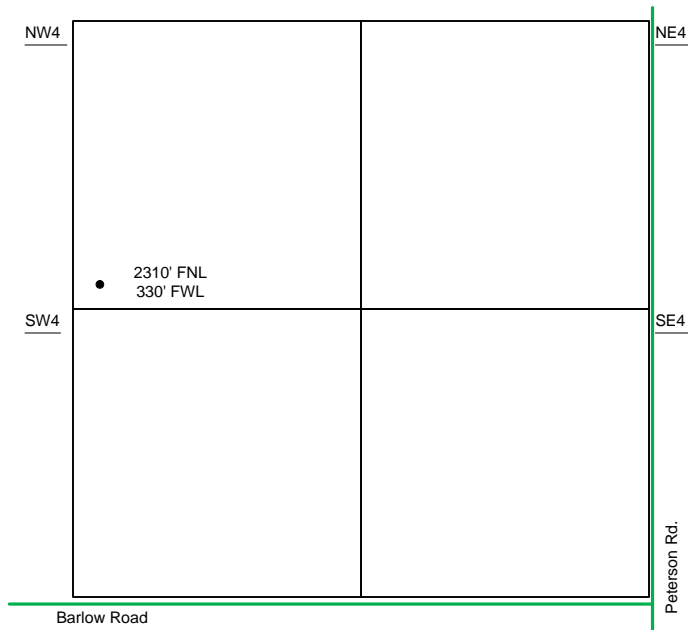
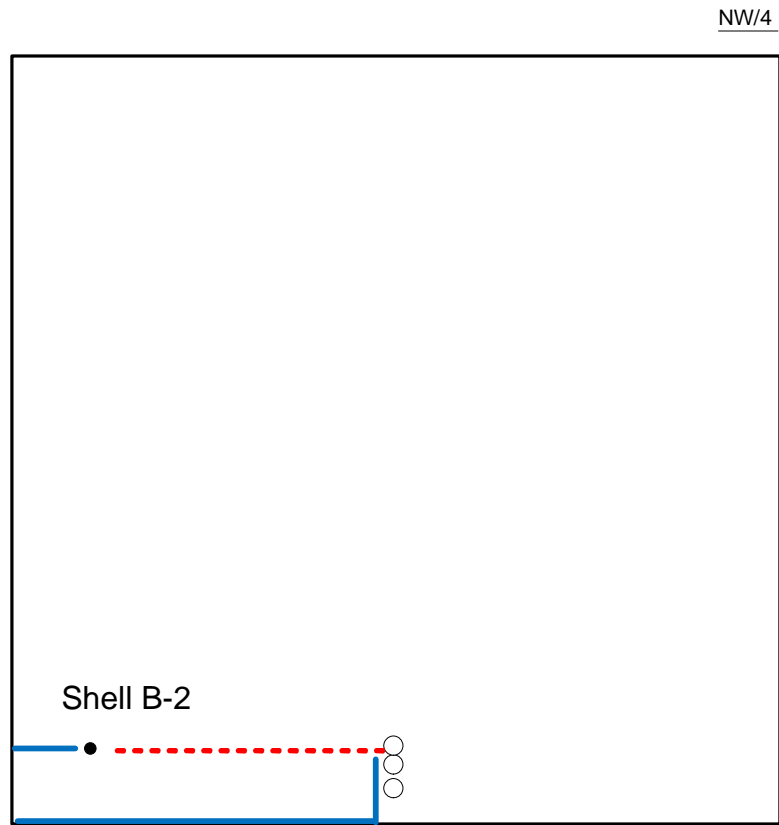


Proposed Plan of Construction
 Shell B-2
 Sec 17 T22S-R34W
 Finney County, KS



Sec 17 – T22S – R34W



Proposed Details of
 NW/4 Sec 17 -T22S -R34W

Note-Drawing **Not** to Scale

Proposed Site Diagram
 Shell B-2
 March 8, 2012

