

T35S, R10W, 6th P.M.

SGOMI

UNIT BOUNDARY PLAT
(For SCHUPBACH 3510 #4-2H)

Located In
Section 4, T35S, R10W, 6th P.M.
Barber County, Kansas

BASIS OF BEARINGS

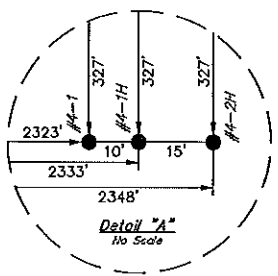
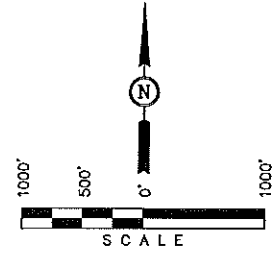
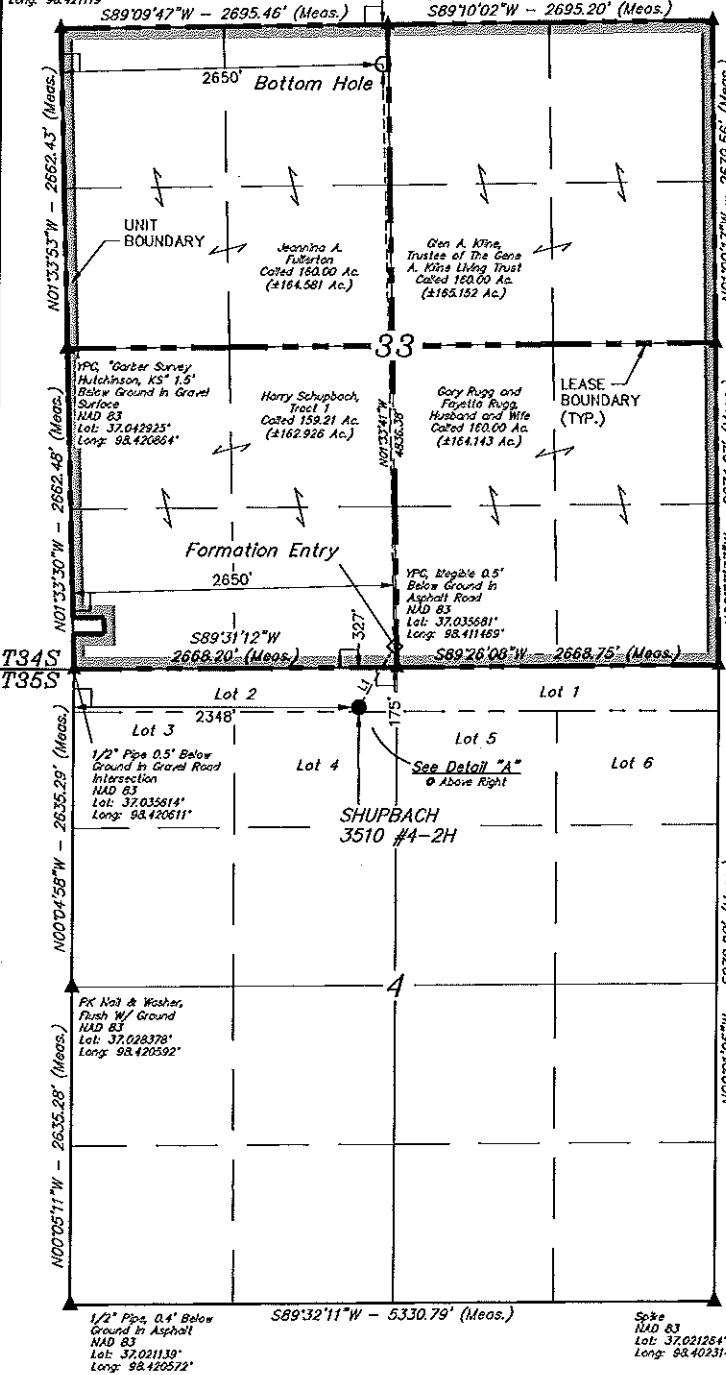
BASIS OF BEARINGS IS A G.P.S. OBSERVATION.

SCHUPBACH-NORTH 3510 #4-2H UNIT
Called 639.21 Acres

5/8" Rebar 0.5' Below
Ground in Gravel Road
Intersection
NAD 83
Lot: 37.050233'
Long: 98.421119'

YPC "Garber Survey
Hutchinson, KS" 0.3'
Below Ground in Gravel
Road
NAD 83
Lot: 37.050347'
Long: 98.411883'

Spike & Washer
0.1' Below Ground
in Asphalt Road
NAD 83
Lot: 37.050456'
Long: 98.402630'



LINE TABLE		
LINE	DIRECTION	LENGTH
L1	N30°30'14"E	586.03'

Nut & Square Washer 0.2'
Below Ground in Asphalt
Road Intersection
NAD 83
Lot: 37.035756'
Long: 98.402328'

- LEGEND:**
- └ = 90° SYMBOL
 - = PROPOSED WELL HEAD.
 - ▲ = SECTION CORNERS LOCATED.

NAD 83 (#4-2H TARGET BOTTOM HOLE) LATITUDE = 37°02'57.98" (37.049439) LONGITUDE = 98°24'43.22" (98.412005)	NAD 83 (#4-2H FORMATION ENTRY) LATITUDE = 37°02'10.18" (37.036161) LONGITUDE = 98°24'41.57" (98.411547)	NAD 83 (#4-2H SURFACE LOCATION) LATITUDE = 37°02'05.18" (37.034772) LONGITUDE = 98°24'45.24" (98.412587)
NAD 27 (#4-2H TARGET BOTTOM HOLE) LATITUDE = 37°02'57.88" (37.049411) LONGITUDE = 98°24'41.96" (98.411655)	NAD 27 (#4-2H FORMATION ENTRY) LATITUDE = 37°02'10.08" (37.036133) LONGITUDE = 98°24'40.30" (98.411194)	NAD 27 (#4-2H SURFACE LOCATION) LATITUDE = 37°02'05.09" (37.034747) LONGITUDE = 98°24'43.97" (98.412214)

CERTIFICATE

THIS IS TO CERTIFY THAT THE ABOVE PLAT WAS PREPARED FROM THE FIELD NOTES OF ACTUAL SURVEYS MADE BY ME OR UNDER MY SUPERVISION AND THAT THE SAME ARE TRUE AND CORRECT TO THE BEST OF MY KNOWLEDGE AND BELIEF.

[Signature]
REGISTERED LAND SURVEYOR
REGISTRATION NO. 10744
STATE OF KANSAS

REVISED: 02-29-12

UTAH ENGINEERING & LAND SURVEYING
85 SOUTH 200 EAST - VERNAL, UTAH 84078
(435) 789-1017

SCALE 1" = 1000'	DATE SURVEYED: 02-15-12	DATE DRAWN: 02-17-12
PARTY D.S. K.S. C.C.	REFERENCES G.L.O. PLAT	
WEATHER COLD	FILE SGOMI	

T35S, R10W, 6th P.M.

SGOMI

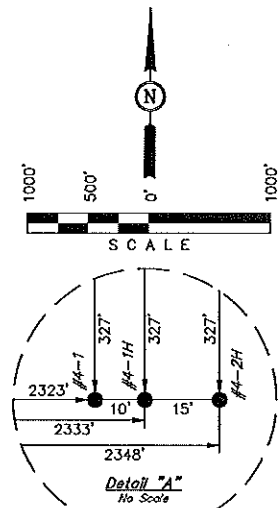
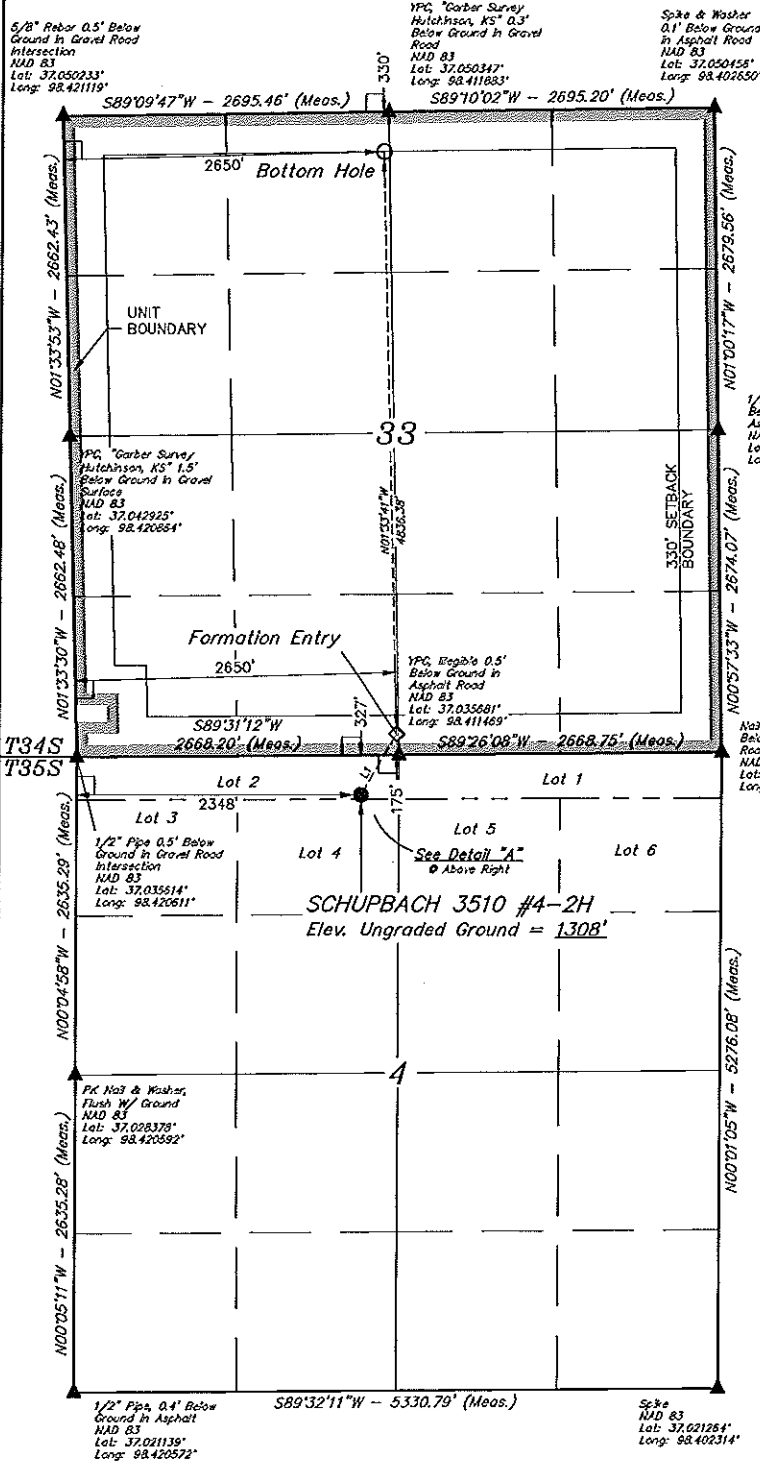
Well location, SCHUPBACH 3510 #4-2H, located as shown in Lot 2 of Section 4, T35S, R10W, 6th P.M., Barber County, Kansas.

BASIS OF ELEVATION

SPOT ELEVATION LOCATED AT THE SOUTHWEST CORNER OF SECTION 12, T35S, R10W, 6th P.M. TAKEN FROM THE CORWIN, QUADRANGLE, KANSAS, 7.5 MINUTE QUAD (TOPOGRAPHIC MAP) PUBLISHED BY THE UNITED STATES DEPARTMENT OF THE INTERIOR, GEOLOGICAL SURVEY. SAID ELEVATION IS MARKED AS BEING 1274 FEET.

BASIS OF BEARINGS

BASIS OF BEARINGS IS A G.P.S. OBSERVATION.



LINE TABLE

LINE	DIRECTION	LENGTH
L1	N30°30'14"E	588.03'



CERTIFICATE

THIS IS TO CERTIFY THAT THE ABOVE PLAT WAS PREPARED FROM FIELD NOTES OF ACTUAL SURVEYS MADE BY ME OR UNDER MY SUPERVISION AND THAT THE SAME ARE TRUE AND CORRECT TO THE BEST OF MY KNOWLEDGE AND BELIEF.

REGISTERED LAND SURVEYOR
REGISTRATION NO. 11111
STATE OF KANSAS

LEGEND:

┌ = 90° SYMBOL

● = PROPOSED WELL HEAD.

▲ = SECTION CORNERS LOCATED.

NAD 83 (#4-2H TARGET BOTTOM HOLE)	NAD 83 (#4-2H FORMATION ENTRY)	NAD 83 (#4-2H SURFACE LOCATION)
LATITUDE = 37°02'57.68" (37.048439)	LATITUDE = 37°02'10.18" (37.036161)	LATITUDE = 37°02'05.18" (37.034772)
LONGITUDE = 98°24'43.22" (98.412006)	LONGITUDE = 98°24'41.57" (98.411547)	LONGITUDE = 98°24'45.24" (98.412587)
NAD 27 (#4-2H TARGET BOTTOM HOLE)	NAD 27 (#4-2H FORMATION ENTRY)	NAD 27 (#4-2H SURFACE LOCATION)
LATITUDE = 37°02'57.63" (37.048411)	LATITUDE = 37°02'10.03" (37.036133)	LATITUDE = 37°02'05.09" (37.034747)
LONGITUDE = 98°24'41.58" (98.411856)	LONGITUDE = 98°24'40.30" (98.411194)	LONGITUDE = 98°24'43.97" (98.412214)

REVISED: 02-29-12

UNTAH ENGINEERING & LAND SURVEYING
85 SOUTH 200 EAST -- VERNAL, UTAH 84078
(435) 789-1017

SCALE 1" = 1000'	DATE SURVEYED: 02-15-12	DATE DRAWN: 02-17-12
PARTY D.S. K.S. C.C.	REFERENCES G.L.O. PLAT	
WEATHER COLD	FILE SGOMI	

SGOMI
PRODUCTION FACILITY LAYOUT FOR
 SCHUPBACH 3510 #4-1, #4-1H & #4-2H
 SECTION 4, T35S, R10W, 6th P.M.
 LOT 2

FIGURE #3

SCALE: 1" = 60'
 DATE: 02-22-12
 DRAWN BY: C.C.
 REV: 02-29-12

