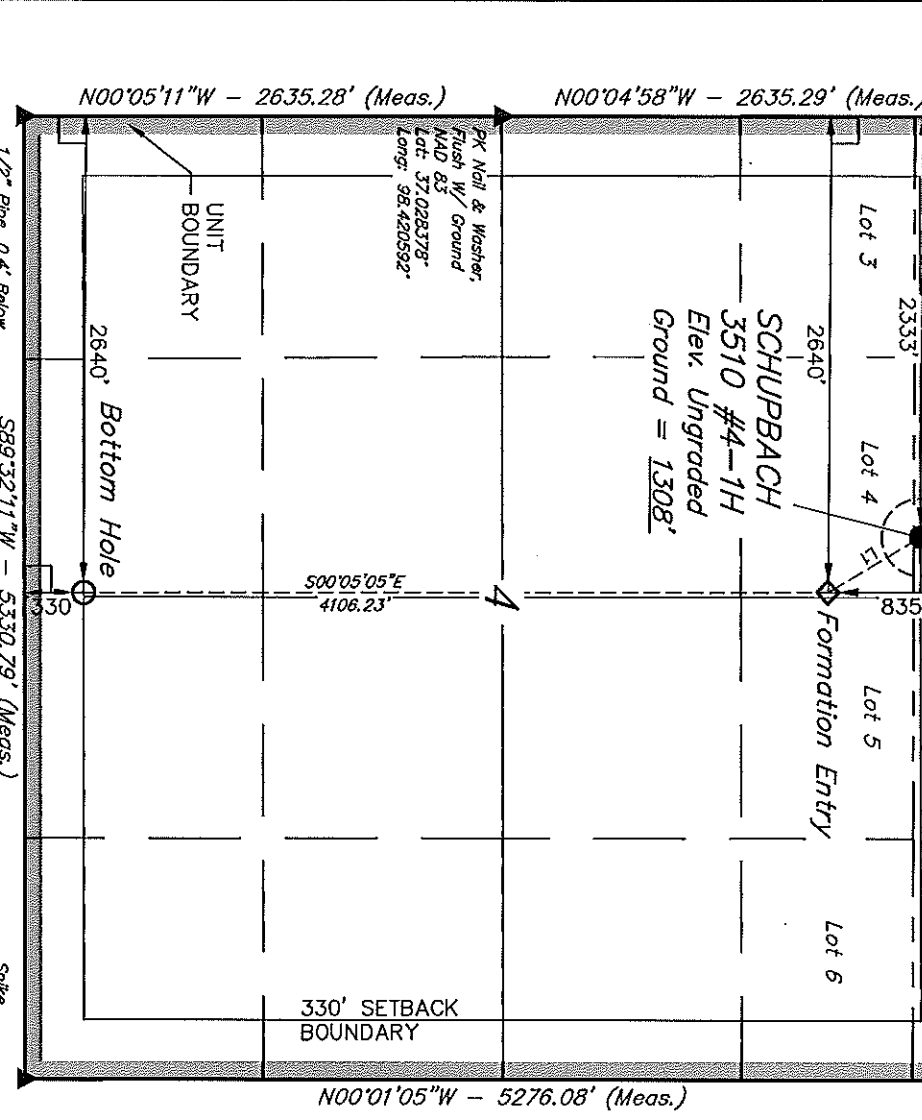


1/2" Pipe 0.5' Below Ground in Gravel Road
 T355S, R10W, 6th P.M.
 0.2' Below Ground in Asphalt Road Intersection

1/2" Pipe 0.4' Below Ground in Asphalt
 T345S, R10W, 6th P.M.
 0.2' Below Ground in Asphalt Road Intersection

1/2" Pipe 0.4' Below Ground in Asphalt
 T355S, R10W, 6th P.M.
 0.2' Below Ground in Asphalt Road Intersection



LEGEND:
 ● = PROPOSED WELL HEAD.
 ▲ = SECTION CORNERS LOCATED.
 — = 90° SYMBOL

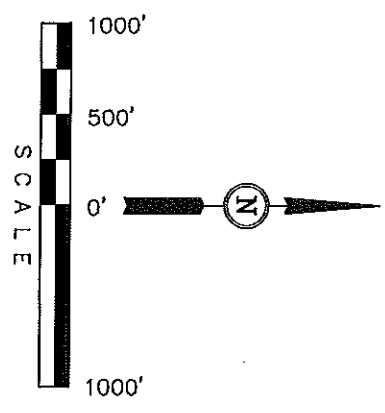
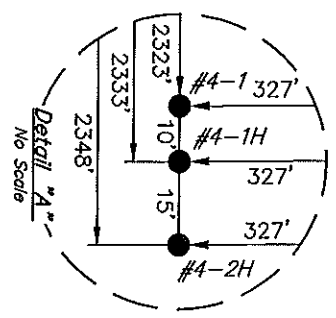
LINE TABLE	
LINE	DIRECTION LENGTH
L1	S31°22'22"E 591.68'

NAD 83 (#4-1H TARGET BOTTOM HOLE)	NAD 83 (#4-1H FORMATION ENTRY)	NAD 83 (#4-1H SURFACE LOCATION)
LATITUDE = 37°01'19.59" (37.022108)	LATITUDE = 37°02'00.19" (37.033386)	LATITUDE = 37°02'05.18" (37.034772)
LONGITUDE = 98°24'41.52" (98.411533)	LONGITUDE = 98°24'41.52" (98.411561)	LONGITUDE = 98°24'45.42" (98.412617)
NAD 27 (#4-1H TARGET BOTTOM HOLE)	NAD 27 (#4-1H FORMATION ENTRY)	NAD 27 (#4-1H SURFACE LOCATION)
LATITUDE = 37°01'19.48" (37.022081)	LATITUDE = 37°02'00.09" (37.033358)	LATITUDE = 37°02'05.09" (37.034747)
LONGITUDE = 98°24'40.25" (98.411181)	LONGITUDE = 98°24'40.35" (98.411208)	LONGITUDE = 98°24'44.15" (98.412264)

SGOMI
 Well location, SCHUPPBACH 3510 #4-1H, located as shown in Lot 2 of Section 4, T35S, R10W, 6th P.M., Barber County, Kansas.
BASIS OF ELEVATION

SPOT ELEVATION LOCATED AT THE SOUTHWEST CORNER OF SECTION 12, T35S, R10W, 6th P.M. TAKEN FROM THE CORNER, QUADRANGLE, KANSAS, 7.5 MINUTE QUAD (TOPOGRAPHIC MAP) PUBLISHED BY THE UNITED STATES DEPARTMENT OF THE INTERIOR, GEOLOGICAL SURVEY. SAID ELEVATION IS MARKED AS BEING 1274 FEET.
BASIS OF BEARINGS

BASIS OF BEARINGS IS A G.P.S. OBSERVATION.



CERTIFICATE
 THIS IS TO CERTIFY THAT THE ABOVE PLAN WAS PREPARED FROM FIELD NOTES OF ACTUAL SURVEYS MADE BY ME OR UNDER MY SUPERVISION AND THAT THE SAME ARE TRUE AND CORRECT TO THE BEST OF MY KNOWLEDGE AND BELIEF.

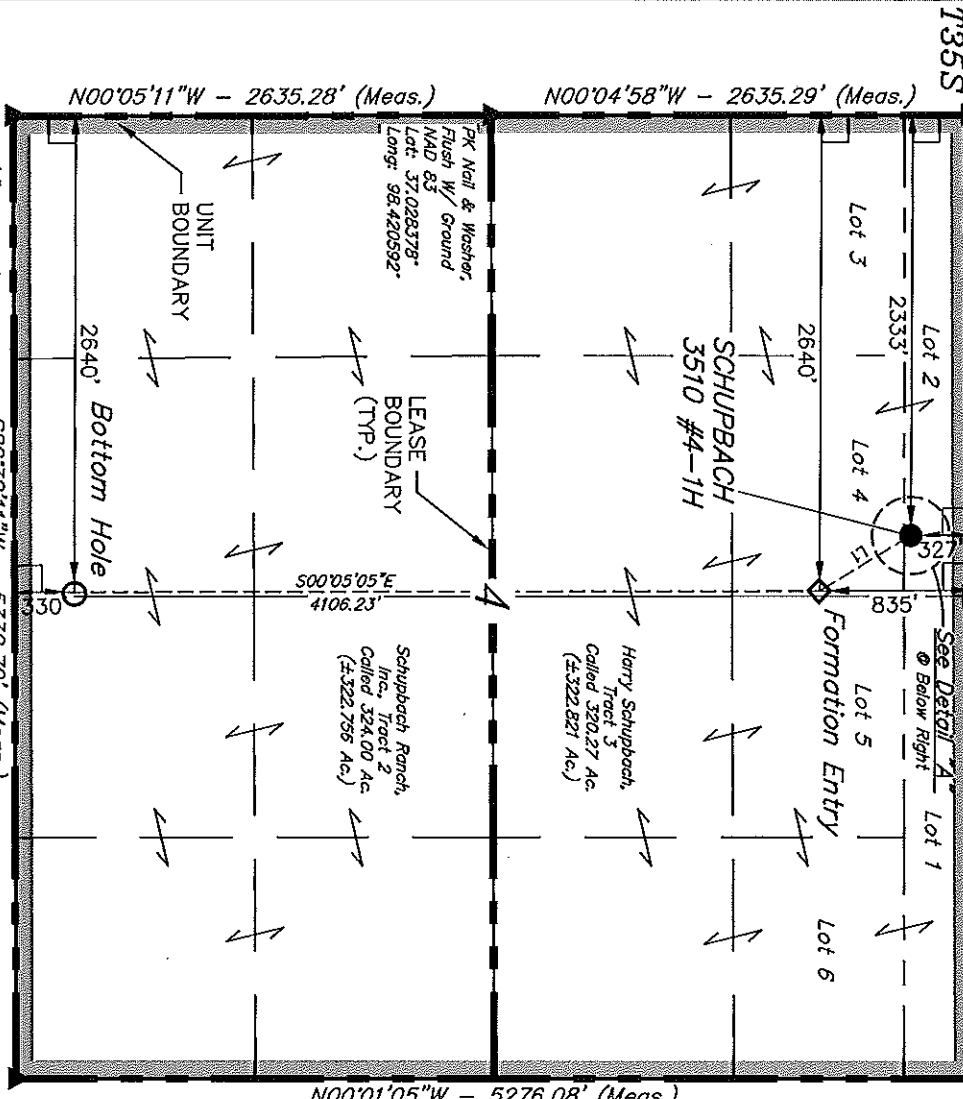
JOHN S. HAYES
 REGISTERED LAND SURVEYOR
 REGISTRATION NO. 1586
 STATE OF KANSAS
 02-29-12

REVISED: 02-29-12
UNTAH ENGINEERING & LAND SURVEYING
 85 SOUTH 200 EAST - VERNAL, UTAH 84078
 (435) 789-1017

SCALE	1" = 1000'	DATE SURVEYED:	02-15-12	DATE DRAWN:	02-17-12
PARTY	D.S. K.S. C.C.	REFERENCES	G.L.O. PLAT		
WEATHER	COLD	FILE	SGOMI		

1/2" Pipe 0.5' Below Ground in Gravel Road
 Intersection
 NAD 83 Lat: 37.035614° Long: 98.420511°
 1/2" Pipe 0.4' Below Ground in Asphalt
 NAD 83 Lat: 37.021139° Long: 98.420572°
 Nail & Square Washer 0.2' Below Ground in Asphalt Road Intersection
 NAD 83 Lat: 37.035756° Long: 98.402328°

T355S, R10W, 6th P.M.
 YPC, Illegible 0.5' Below Ground in Asphalt Road
 NAD 83 Lat: 37.035681° Long: 98.411469°
 See Detail "A" @ Below Right



LEGEND:
 ● = 90° SYMBOL
 ● = PROPOSED WELL HEAD.
 ▲ = SECTION CORNERS LOCATED.

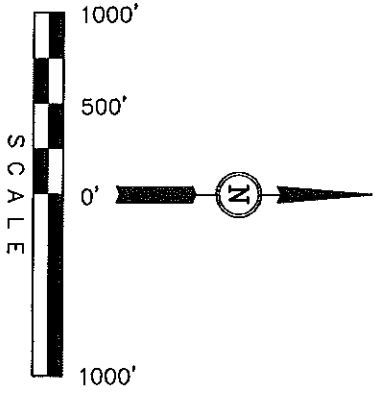
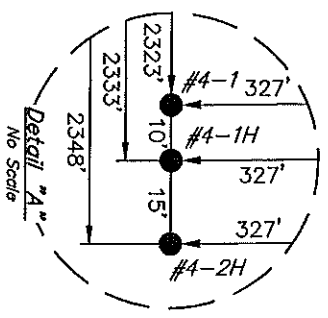
LINE	DIRECTION	LENGTH
L1	S31°22'22"E	591.68'

LINE	DIRECTION	LENGTH
NAD 83 (#4-1H TARGET BOTTOM HOLE)	NAD 83 (#4-1H FORMATION ENTRY)	NAD 83 (#4-1H SURFACE LOCATION)
LATITUDE = 37°01'19.59" (37.022108)	LATITUDE = 37°02'00.19" (37.033386)	LATITUDE = 37°02'05.18" (37.034772)
LONGITUDE = 98°24'41.52" (98.411533)	LONGITUDE = 98°24'41.62" (98.411561)	LONGITUDE = 98°24'45.42" (98.412617)
NAD 27 (#4-1H TARGET BOTTOM HOLE)	NAD 27 (#4-1H FORMATION ENTRY)	NAD 27 (#4-1H SURFACE LOCATION)
LATITUDE = 37°01'19.49" (37.022081)	LATITUDE = 37°02'00.09" (37.033358)	LATITUDE = 37°02'05.09" (37.034747)
LONGITUDE = 98°24'40.25" (98.411181)	LONGITUDE = 98°24'40.35" (98.411208)	LONGITUDE = 98°24'44.15" (98.412264)

SGOMI
UNIT BOUNDARY PLAT
 (For SCHUPBACH 3510 #4-1H)

Located in
 Section 4, T35S, R10W, 6th P.M.
 Barber County, Kansas
 BASIS OF BEARINGS

BASIS OF BEARINGS IS A G.P.S. OBSERVATION.
 SCHUPBACH-NORTH 3510 #4-1H UNIT
 Called 644.27 Acres



CERTIFICATE
 THIS IS TO CERTIFY THAT THE ABOVE PLAT WAS PREPARED FROM FIELD NOTES OF ACTUAL SURVEYS MADE BY ME OR UNDER MY SUPERVISION AND THAT THE SAME ARE TRUE AND CORRECT TO THE BEST OF MY KNOWLEDGE AND BELIEF.

REGISTERED LAND SURVEYOR
 REGISTRATION NO. 12869
 STATE OF KANSAS
 JOHN S. JOHNSON
 REVISED: 02-29-12

UNTAH ENGINEERING & LAND SURVEYING
 85 SOUTH 200 EAST - VERNAL, UTAH 84078
 (435) 789-1017

SCALE	DATE SURVEYED:	DATE DRAWN:
1" = 1000'	02-15-12	02-17-12
PARTY	REFERENCES	FILE
D.S. K.S. C.C.	G.L.O. PLAT	SGOMI
WEATHER	COLD	

SGOMI
PRODUCTION FACILITY LAYOUT FOR
 SCHUPBACH 3510 #4-1, #4-1H & #4-2H
 SECTION 4, T35S, R10W, 6th P.M.
 LOT 2

FIGURE #3
 SCALE: 1" = 60'
 DATE: 02-22-12
 DRAWN BY: C.C.
 REV: 02-29-12

