

1/2" Pipe 0.5' Below Ground in Gravel Road
 Intersection
 NAD 83
 Lot: 37.035614°
 Long: 98.420511°

T345S
 T355S

589°31'12"W - 2668.20' (Meas.)

589°26'08"W - 2668.75' (Meas.)

589°32'11"W - 5330.79' (Meas.)

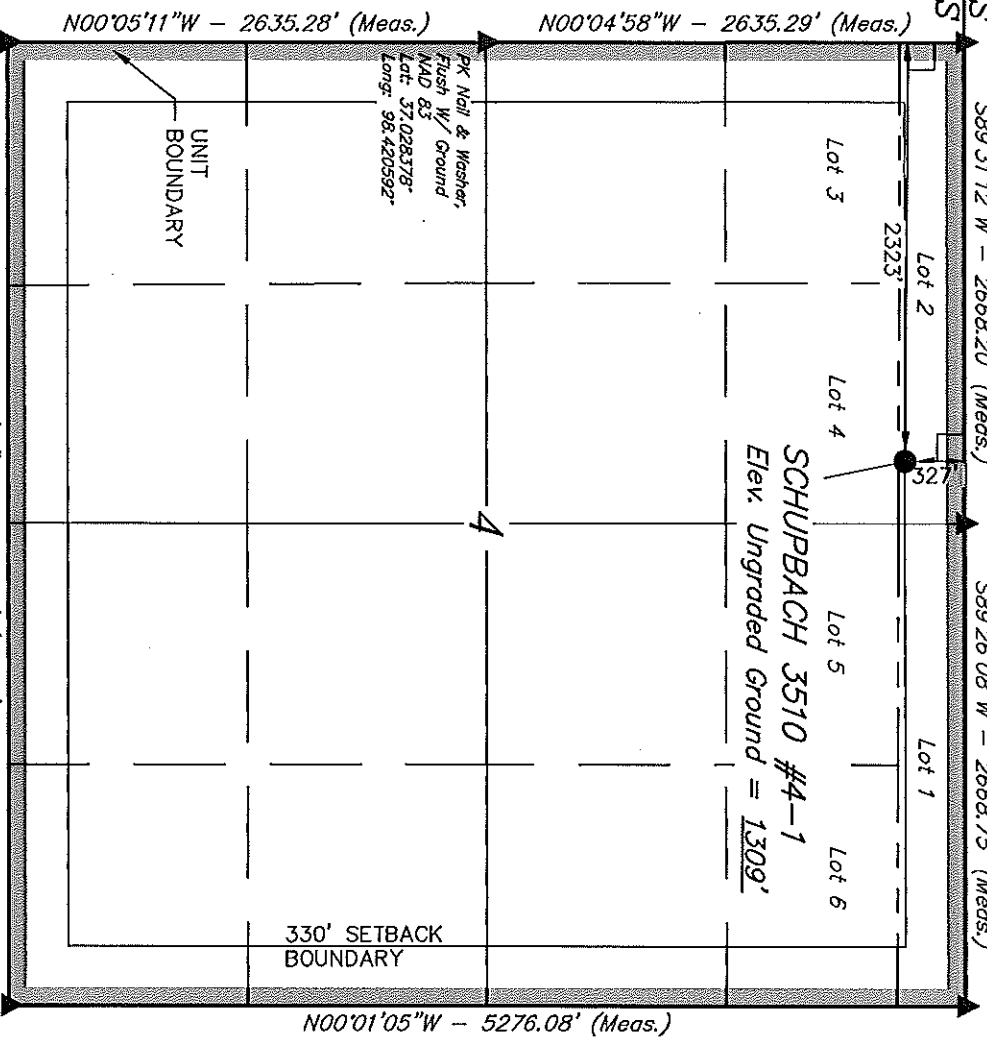
589°31'12"W - 2668.20' (Meas.)

589°26'08"W - 2668.75' (Meas.)

0.2' Below Ground in Asphalt Road Intersection
 NAD 83
 Lot: 37.035756°
 Long: 98.402338°

Nail & Square Washer
 Asphalt Road Intersection
 NAD 83
 Lot: 37.035756°
 Long: 98.402338°

T355S, R10W, 6th P.M.



LEGEND:

— = 90° SYMBOL

● = PROPOSED WELL HEAD.

▲ = SECTION CORNERS LOCATED.

(NAD 83)
 LATITUDE = 37°02'05.18" (37.034772)
 LONGITUDE = 98°24'45.54" (98.412650)

(NAD 27)
 LATITUDE = 37°02'05.09" (37.034747)
 LONGITUDE = 98°24'44.28" (98.412300)

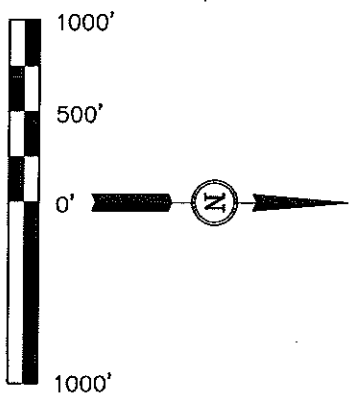
SGOMI

Well location, SCHUPPBACH 3510 #4-1, located as shown in Lot 2 of Section 4, T35S, R10W, 6th P.M., Barber County, Kansas.

BASIS OF ELEVATION

BASIS OF BEARINGS

BASIS OF BEARINGS IS A G.P.S. OBSERVATION.



CERTIFICATE

THIS IS TO CERTIFY THAT THE ABOVE PLAT WAS PREPARED FROM FIELD NOTES OF ACTUAL SURVEYS MADE BY ME, OR UNDER MY SUPERVISION AND THAT THE SAME ARE TRUE AND CORRECT TO THE BEST OF MY KNOWLEDGE AND BELIEF.

JOHN L. SWEENEY
 REGISTERED LAND SURVEYOR
 REGISTRATION NO. 4386
 STATE OF KANSAS

REVISED: 02-29-12

UNTAH ENGINEERING & LAND SURVEYING
 85 SOUTH 200 EAST - VERNAL, UTAH 84078
 (435) 789-1017

SCALE	1" = 1000'	DATE SURVEYED:	02-15-12	DATE DRAWN:	02-17-12
PARTY	D.S. K.S. C.C.	REFERENCES	G.L.O. PLAT		
WEATHER	COLD	FILE	SGOMI		

SGOMI
PRODUCTION FACILITY LAYOUT FOR
SCHUPBACH 3510 #4-1, #4-1H & #4-2H
SECTION 4, T35S, R10W, 6th P.M.
LOT 2

FIGURE #3

SCALE: 1" = 60'
 DATE: 02-22-12
 DRAWN BY: C.C.
 REV: 02-28-12

