



TRILOBITE TESTING, INC.

DRILL STEM TEST REPORT

McElvain Energy inc.
 1050 17th st.
 STE 2500
 Denver Co. 80265+2080
 ATTN: Richard Bell

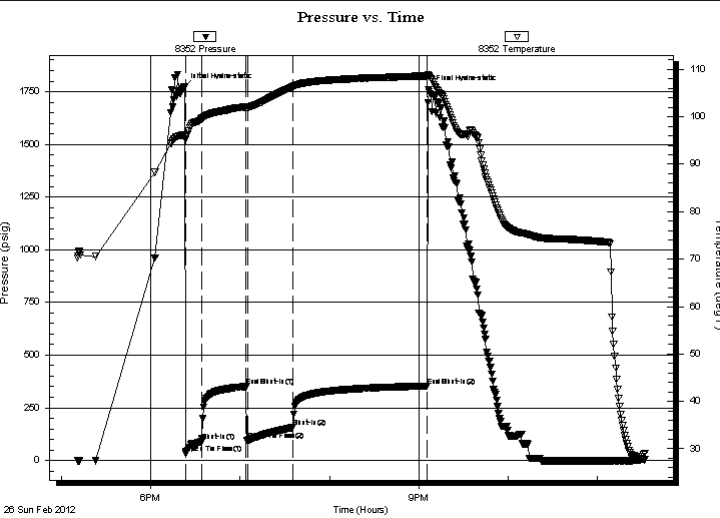
25-11s-23w Trego
Hemmert 25-5 #1
 Job Ticket: 45699 **DST#: 2**
 Test Start: 2012.02.26 @ 17:11:05

GENERAL INFORMATION:

Formation: **LKC"D,E,F"**
 Deviated: No Whipstock: ft (KB)
 Test Type: Conventional Bottom Hole (Reset)
 Time Tool Opened: 18:23:40
 Tester: Andy Carreira
 Time Test Ended: 23:31:59
 Unit No: 39
 Interval: **3608.00 ft (KB) To 3660.00 ft (KB) (TVD)**
 Reference Elevations: 2301.00 ft (KB)
 Total Depth: 3660.00 ft (KB) (TVD)
 2296.00 ft (CF)
 Hole Diameter: 7.88 inches
 Hole Condition: Fair
 KB to GR/CF: 5.00 ft

Serial #: 8352 Outside
 Press @ Run Depth: 156.60 psig @ 3615.00 ft (KB) Capacity: 8000.00 psig
 Start Date: 2012.02.26 End Date: 2012.02.26 Last Calib.: 2012.02.26
 Start Time: 17:11:05 End Time: 23:31:59 Time On Btm: 2012.02.26 @ 18:22:30
 Time Off Btm: 2012.02.26 @ 21:06:30

TEST COMMENT: IF:(10min) BOB, 8 min.
 IS:(30min) Return Blow, 1" died in 20 min.
 FF:(30min) BOB, 8 min.
 FS:(90min) Return Blow, 1" died in 32 min.



PRESSURE SUMMARY

Time (Min.)	Pressure (psig)	Temp (deg F)	Annotation
0	1770.23	96.22	Initial Hydro-static
2	34.00	95.77	Open To Flow (1)
12	89.39	99.47	Shut-In(1)
42	350.58	102.07	End Shut-In(1)
43	96.10	102.01	Open To Flow (2)
73	156.60	106.34	Shut-In(2)
163	352.58	108.61	End Shut-In(2)
164	1760.28	108.75	Final Hydro-static

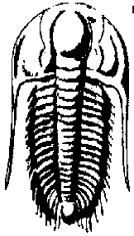
Recovery

Length (ft)	Description	Volume (bbl)
180.00	MW m=10% w=90%	1.41
60.00	OCCGM g=5% o=10% m=85%	0.84
55.00	HOCGM g=10% o=40% m=50%	0.77
5.00	CO o=100%	0.07
0.00	GIP= 360ft	0.00

* Recovery from multiple tests

Gas Rates

Choke (inches)	Pressure (psig)	Gas Rate (Mcf/d)



**TRILOBITE
TESTING, INC.**

DRILL STEM TEST REPORT

FLUID SUMMARY

McElvain Energy inc.

25-11s-23w Trego

1050 17th st.
STE 2500
Denver Co. 80265+2080
ATTN: Richard Bell

Hemmert 25-5 #1

Job Ticket: 45699

DST#: 2

Test Start: 2012.02.26 @ 17:11:05

Mud and Cushion Information

Mud Type: Gel Chem

Mud Weight: 9.00 lb/gal

Viscosity: 54.00 sec/qt

Water Loss: 6.40 in³

Resistivity: ohm.m

Salinity: 1500.00 ppm

Filter Cake: inches

Cushion Type:

Cushion Length: ft

Cushion Volume: bbl

Gas Cushion Type:

Gas Cushion Pressure: psig

Oil API: deg API

Water Salinity: 68000 ppm

Recovery Information

Recovery Table

Length ft	Description	Volume bbl
180.00	MW m=10% w=90%	1.408
60.00	OCCGM g=5% o=10% m=85%	0.842
55.00	HOCGM g=10% o=40% m=50%	0.772
5.00	CO o=100%	0.070
0.00	GIP= 360ft	0.000

Total Length: 300.00 ft Total Volume: 3.092 bbl

Num Fluid Samples: 0

Num Gas Bombs: 0

Serial #:

Laboratory Name:

Laboratory Location:

Recovery Comments: Resistivity- .15 @ 50deg= 68000

Sampler Data- g=1/8cf o=400ml m=500ml w=2100ml press=185lbs

