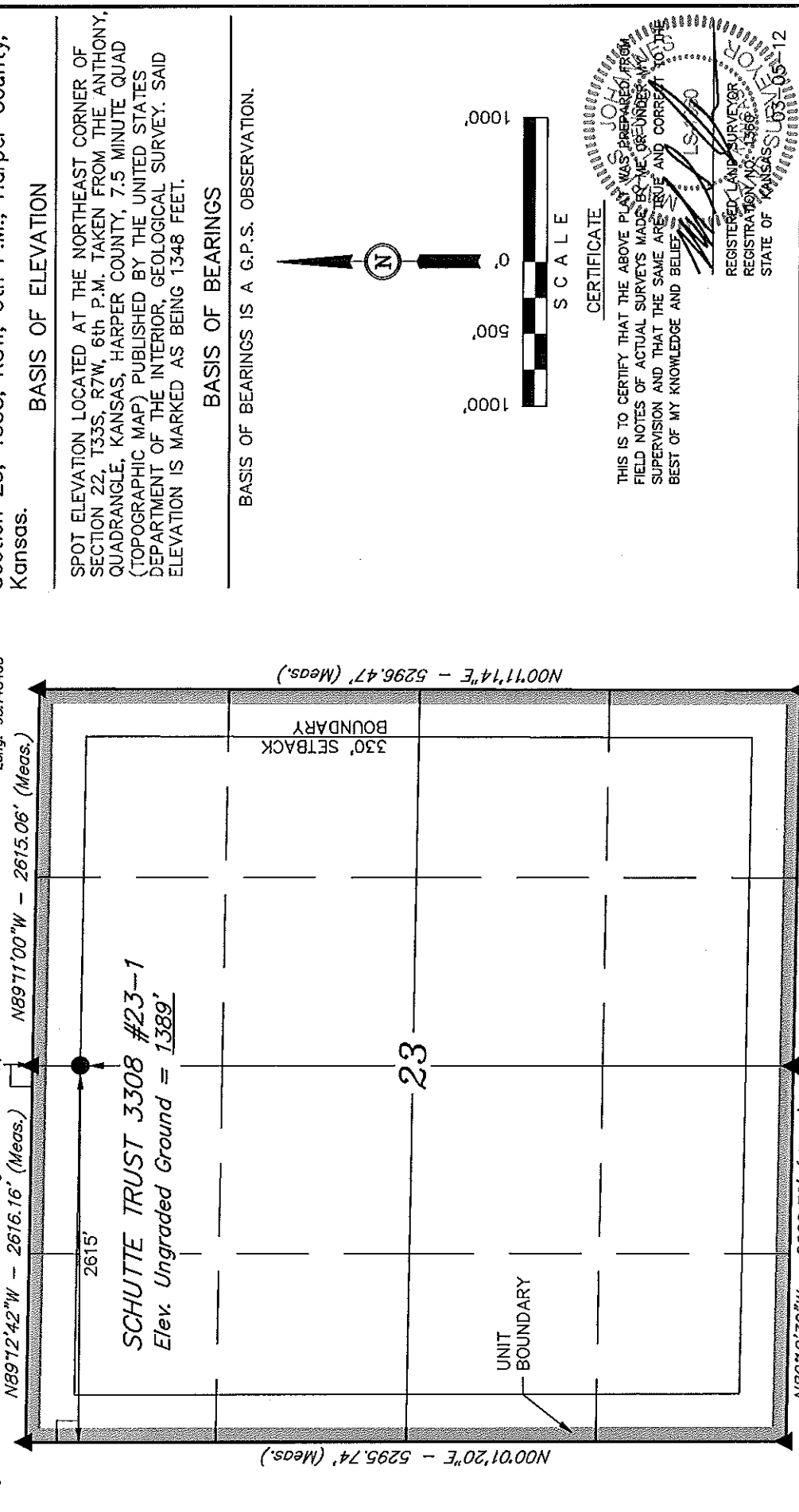


T33S, R8W, 6th P.M.

1" Iron Bar 0.5'
Below Ground
In Gravel Road
NAD 83
Lat: 37.166553"
Long: 98.166353"

1" Iron Bar Next to Limestone 0.9'
Below Ground
NAD 83
Lat: 37.166458"
Long: 98.157375"

Rail Road Spike 1.0'
Below Ground in
Gravel Road Intersection
NAD 83
Lat: 37.166358"
Long: 98.148403"



BASIS OF ELEVATION

SPOT ELEVATION LOCATED AT THE NORTHEAST CORNER OF SECTION 22, T33S, R7W, 6th P.M. TAKEN FROM THE ANTHONY, QUADRANGLE, KANSAS, HARPER COUNTY, 7.5 MINUTE QUAD (TOPOGRAPHIC MAP) PUBLISHED BY THE UNITED STATES DEPARTMENT OF THE INTERIOR, GEOLOGICAL SURVEY. SAID ELEVATION IS MARKED AS BEING 1348 FEET.

BASIS OF BEARINGS

BASIS OF BEARINGS IS A G.P.S. OBSERVATION.



CERTIFICATE

THIS IS TO CERTIFY THAT THE ABOVE PLAT WAS PREPARED FROM FIELD NOTES OF ACTUAL SURVEYS MADE BY ME OR UNDER MY SUPERVISION AND THAT THE SAME ARE TRUE AND CORRECT TO THE BEST OF MY KNOWLEDGE AND BELIEF.



UTAH ENGINEERING & LAND SURVEYING	
85 SOUTH 200 EAST - VERNAL, UTAH 84078 (435) 789-1017	
SCALE 1" = 1000'	DATE SURVEYED: 02-17-12 DATE DRAWN: 02-29-12
PARTY L.S. C.C.	REFERENCES G.L.O. PLAT
WEATHER COLD	FILE SGOMI

PK Nail in Asphalt Road NAD 83 Lat: 37.152008" Long: 98.166350"

PK Nail in Asphalt Road NAD 83 Lat: 37.151911" Long: 98.157408"

PK Nail in Asphalt Road NAD 83 Lat: 37.151814" Long: 98.148456"

LEGEND:
 L = 90° SYMBOL
 ● = PROPOSED WELL HEAD.
 ▲ = SECTION CORNERS LOCATED.

LATITUDE = 37°09'55.99" (37.165553)
 LONGITUDE = 98°09'26.56" (98.157378)

LATITUDE = 37°09'55.91" (37.165531)
 LONGITUDE = 98°09'25.32" (98.157033)

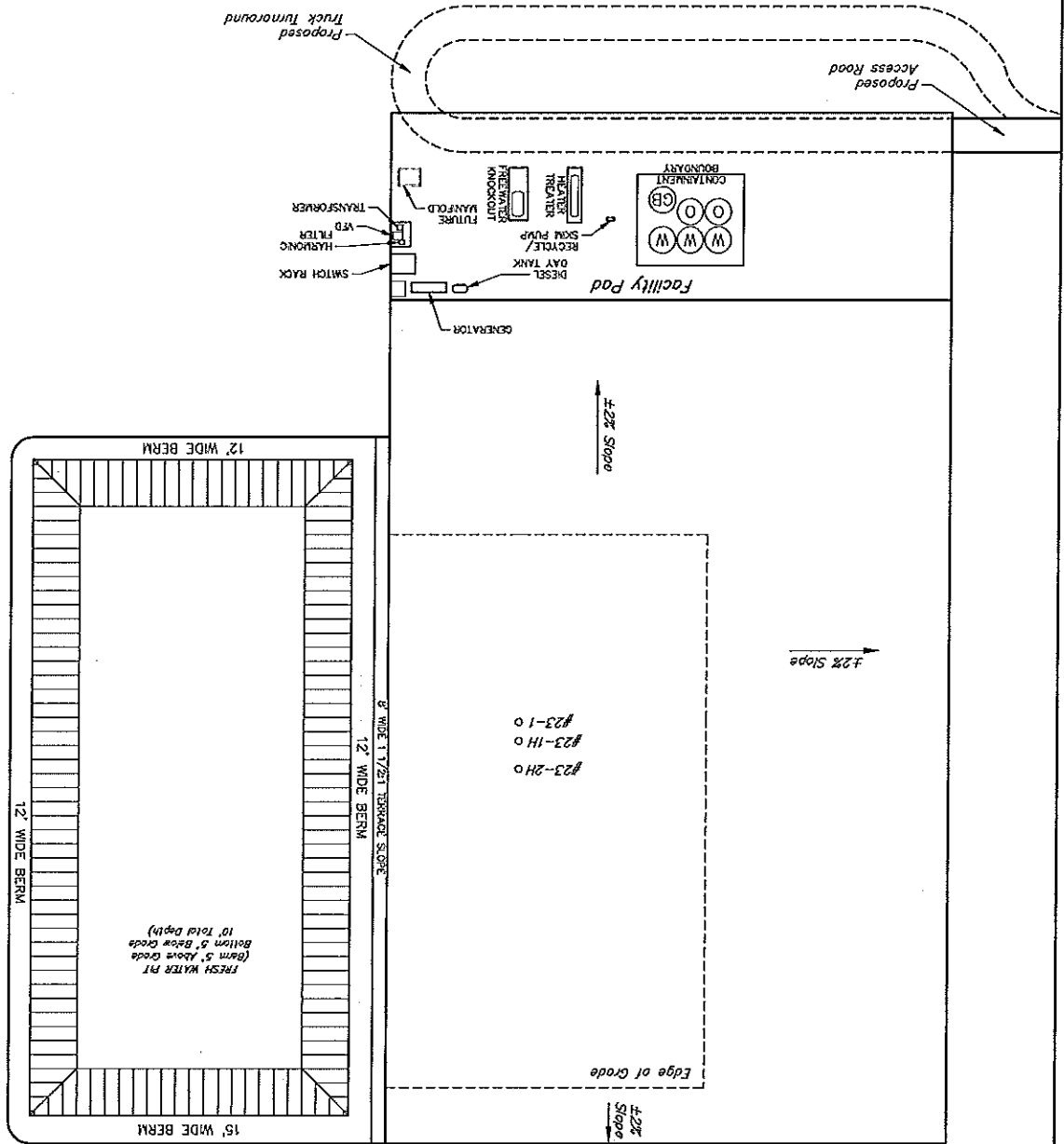


FIGURE #3
 SCALE: 1" = 60'
 DATE: 02-29-12
 DRAWN BY: C.C.

SCOMI
 PRODUCTION FACILITY LAYOUT FOR
 SCHULTE TRUST 3308 #23-1, #23-1H & #23-2H
 SECTION 23, T33S, R8W, 6th P.M.
 N 1/2 N 1/2

