

Schutte Trust 3308 23-1H

Section 23-33N-8W:

All of the Section except a tract described as beginning at a point 1,047.65 feet west of the SE corner, thence North 1 degree 15 minutes 00 seconds west a distance of 543.50 feet, thence Westerly 253.50 feet, thence Southerly 533.30 feet to a point on the South line, thence East 260.53 feet to the point of beginning, containing 636.82 acres, more or less

- Oil and Gas Lease dated July 28, 2011, by and between Amber Lea Schutte, Trustee and George Homm, Trustee, on behalf of the Schutte Trust No. 3 dated October 1st 2007, as Lessor and Shell Gulf of Mexico Inc., as Lessee, recorded in the office of the Register of Deeds, Harper County, Kansas in Book G92, Page 1380.
- Oil and Gas Lease dated August 23, 2011, by and between Charles W. Masner and Ella C. Masner, as Lessor and Shell Gulf of Mexico Inc., as Lessee, recorded in the office of the Register of Deeds, Harper County, Kansas in Book G92, Page 1393.

A tract of land in the Southeast Quarter (SE/4) described as beginning at a point 1,047.65 feet west of the SE corner, thence North 1 degree 15 minutes 00 seconds west a distance of 543.50 feet, thence Westerly 253.50 feet, thence Southerly 533.30 feet to a point on the South line, thence East 260.53 feet to the point of beginning, containing 3.18 acres, more or less

- Oil and Gas Lease dated February 13, 2012, by and between Stephen L. Gideon & Patricia Gideon, husband and wife, as Lessor and Shell Gulf of Mexico Inc., as Lessee, recorded in the office of the Register of Deeds, Harper County, Kansas.

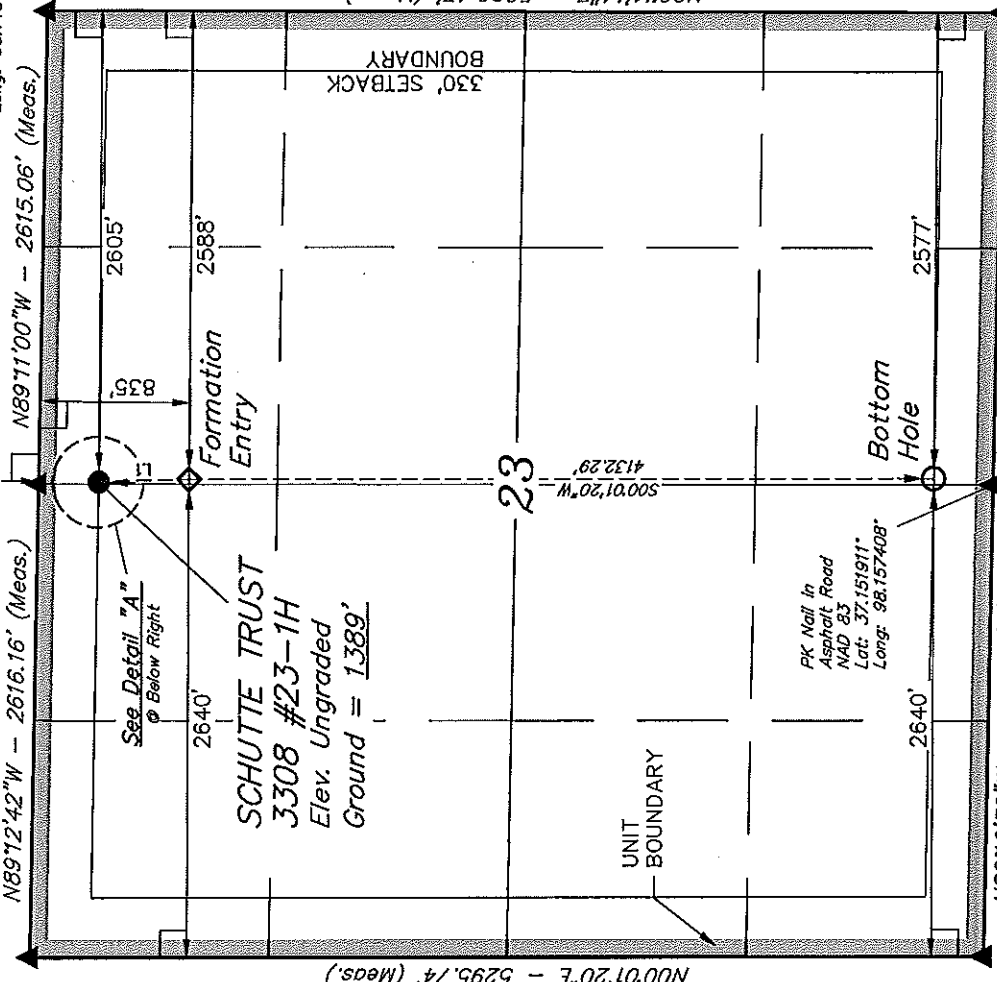
Forming a unit consisting of 640 acres, more or less

T33S, R8W, 6th P.M.

1" Iron Bar 0.5'
Below Ground
in Gravel Road
NAD 83
Lat: 37.166553'
Long: 98.166353'

1" Iron Bar Next to Limestone 0.9'
Below Ground
NAD 83
Lat: 37.166458'
Long: 98.157375'

Rail Road Spike 1.0'
Below Ground in
Gravel Road Intersection
NAD 83
Lat: 37.166358'
Long: 98.148403'

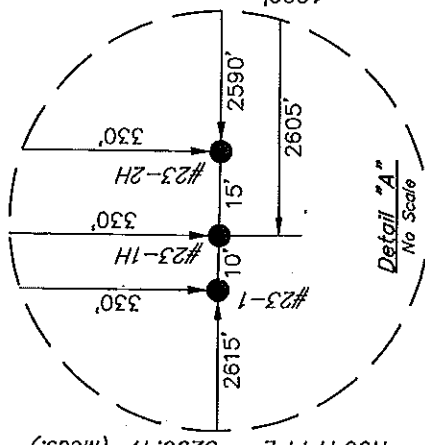


BASIS OF ELEVATION

SPOT ELEVATION LOCATED AT THE NORTHEAST CORNER OF SECTION 22, T33S, R7W, 6th P.M. TAKEN FROM THE ANTHONY, QUADRANGLE, KANSAS, HARPER COUNTY, 7.5 MINUTE QUAD (TOPOGRAPHIC MAP) PUBLISHED BY THE UNITED STATES DEPARTMENT OF THE INTERIOR, GEOLOGICAL SURVEY. SAID ELEVATION IS MARKED AS BEING 1348 FEET.

BASIS OF BEARINGS

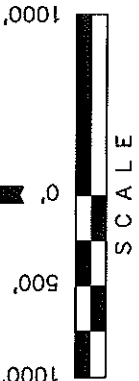
BASIS OF BEARINGS IS A G.P.S. OBSERVATION.



CERTIFICATE

THIS IS TO CERTIFY THAT THE ABOVE PLAT WAS PREPARED FROM FIELD NOTES OF ACTUAL SURVEYS MADE BY ME OR UNDER MY SUPERVISION AND THAT THE SAME ARE TRUE AND CORRECT TO THE BEST OF MY KNOWLEDGE AND BELIEF.

JOHN W. LINDSEY
REGISTERED LAND SURVEYOR
REGISTRATION NO. 1586
STATE OF KANSAS
03-05-12



SGOMI

Well location, SCHUTTE TRUST 3308 #23-1H, located as shown in the NW 1/4 NE 1/4 of Section 23, T33S, R8W, 6th P.M., Harper County, Kansas.

UNTAH ENGINEERING & LAND SURVEYING
85 SOUTH 200 EAST - VERNAL, UTAH 84078
(435) 789-1017

SCALE	1" = 1000'	DATE SURVEYED:	02-17-12	DATE DRAWN:	02-29-12
PARTY	L.S. C.C.	REFERENCES	G.L.O. PLAT		
WEATHER	COLD	FILE	SGOMI		

LINE TABLE	
LINE	DIRECTION LENGTH
L1	S01°39'54"E 505.48'

LEGEND:	
—	= 90° SYMBOL
●	= PROPOSED WELL HEAD.
▲	= SECTION CORNERS LOCATED.

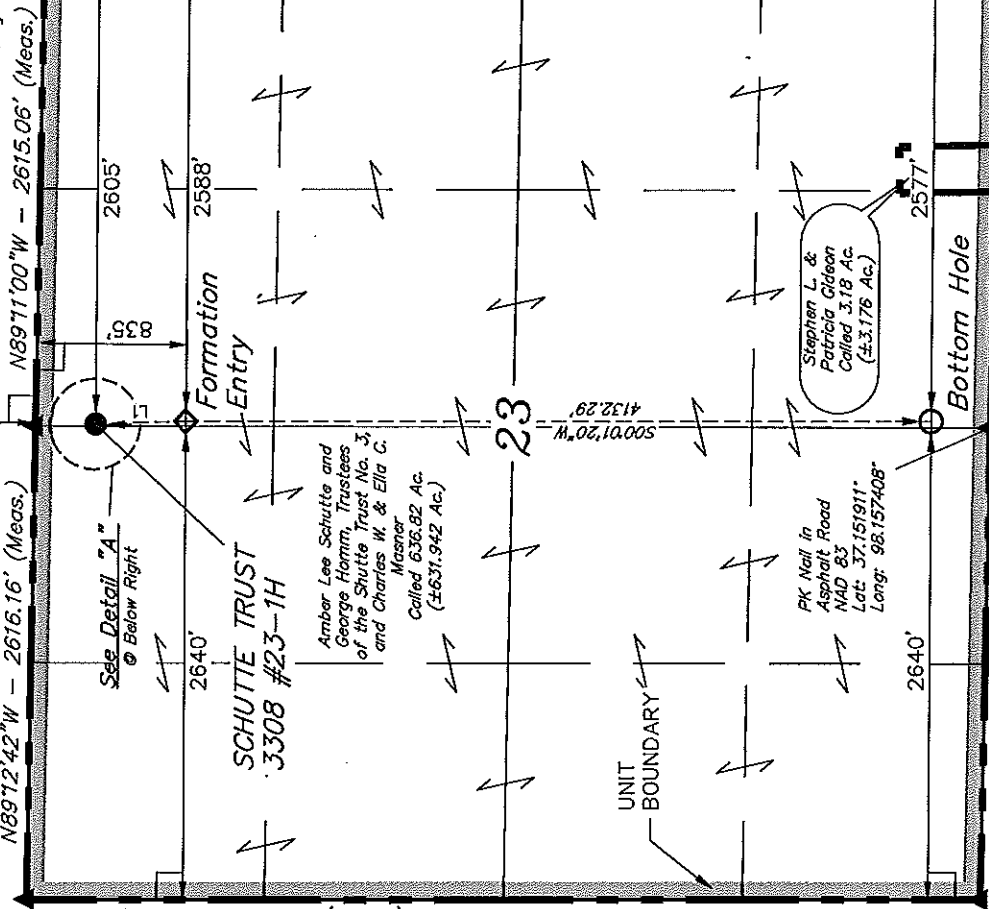
FORMATION ENTRY	
NAD 83 (#23-1H FORMATION ENTRY)	NAD 83 (#23-1H SURFACE LOCATION)
LATITUDE = 37°09'50.99" (37.164164)	LATITUDE = 37°09'55.99" (37.165553)
LONGITUDE = 98°09'26.25" (98.157292)	LONGITUDE = 98°09'26.44" (98.157344)
NAD 27 (#23-1H FORMATION ENTRY)	NAD 27 (#23-1H SURFACE LOCATION)
LATITUDE = 37°09'50.91" (37.164142)	LATITUDE = 37°09'55.91" (37.165531)
LONGITUDE = 98°09'25.02" (98.156950)	LONGITUDE = 98°09'25.20" (98.157000)

T33S, R8W, 6th P.M.

1" Iron Bar 0.5'
Below Ground
in Gravel Road
NAD 83
Lat: 37.166553"
Long: 98.166353"

1" Iron Bar Next to Limestone 0.9'
Below Ground
in Gravel Road
NAD 83
Lat: 37.166458"
Long: 98.157375"

Rail Road Spike 1.0'
Below Ground in
Gravel Road Intersection
NAD 83
Lat: 37.166355"
Long: 98.148403"



LEGEND:

- = 90° SYMBOL
- = PROPOSED WELL HEAD.
- ▲ = SECTION CORNERS LOCATED.

LINE TABLE	
LINE	DIRECTION LENGTH
L1	S01°39'54"E 505.48'
NAD 83 (#23-1H FORMATION ENTRY)	NAD 83 (#23-1H SURFACE LOCATION)
LATITUDE = 37°09'50.99" (37.164164)	LATITUDE = 37°09'55.99" (37.165553)
LONGITUDE = 98°09'26.25" (98.157292)	LONGITUDE = 98°09'26.44" (98.157344)
NAD 27 (#23-1H FORMATION ENTRY)	NAD 27 (#23-1H SURFACE LOCATION)
LATITUDE = 37°09'50.91" (37.164142)	LATITUDE = 37°09'55.91" (37.165531)
LONGITUDE = 98°09'25.02" (98.156950)	LONGITUDE = 98°09'25.20" (98.157000)

SGOMI

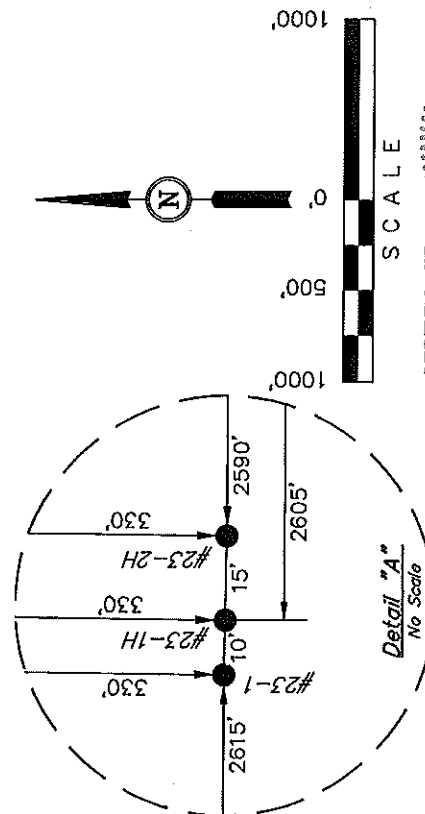
UNIT BOUNDARY PLAT

(For SCHUTTE TRUST 3308 #23-1H)

Located in
Section 23, T33S, R8W, 6th P.M.
Harper County, Kansas

BASIS OF BEARINGS

BASIS OF BEARINGS IS A G.P.S. OBSERVATION.
SCHUTTE TRUST 3308 #23-1H UNIT
Called 640.00 Acres



CERTIFICATE

THIS IS TO CERTIFY THAT THE ABOVE PLAT WAS PREPARED FROM
FIELD NOTES OF ACTUAL SURVEYS MADE BY ME OR UNDER MY
SUPERVISION AND THAT THE SAME ARE TRUE AND CORRECT TO THE
BEST OF MY KNOWLEDGE AND BELIEF.

JOHN S. JOHNSON
REGISTERED LAND SURVEYOR
REGISTRATION NO. 4366
STATE OF KANSAS
LS-63-09-12

UTAH ENGINEERING & LAND SURVEYING
85 SOUTH 200 EAST - VERNAL, UTAH 84078
(435) 789-1017

SCALE 1" = 1000'	DATE SURVEYED: 02-17-12	DATE DRAWN: 02-29-12
PARTY L.S. C.C.	REFERENCES C.L.O. PLAT	
WEATHER COLD	FILE SGOMI	

SGOMI
PRODUCTION FACILITY LAYOUT FOR
SCHUTTE TRUST 3308 #23-1, #23-1H & #23-2H
SECTION 23, T33S, R8W, 6th P.M.
N 1/2 N 1/2

FIGURE #3
 SCALE: 1" = 60'
 DATE: 02-29-12
 DRAWN BY: C.C.

