

PENCO ENGINEERING, P.A.
P.O. BOX 392
PLAINVILLE, KS 67663
(785) 434-4611

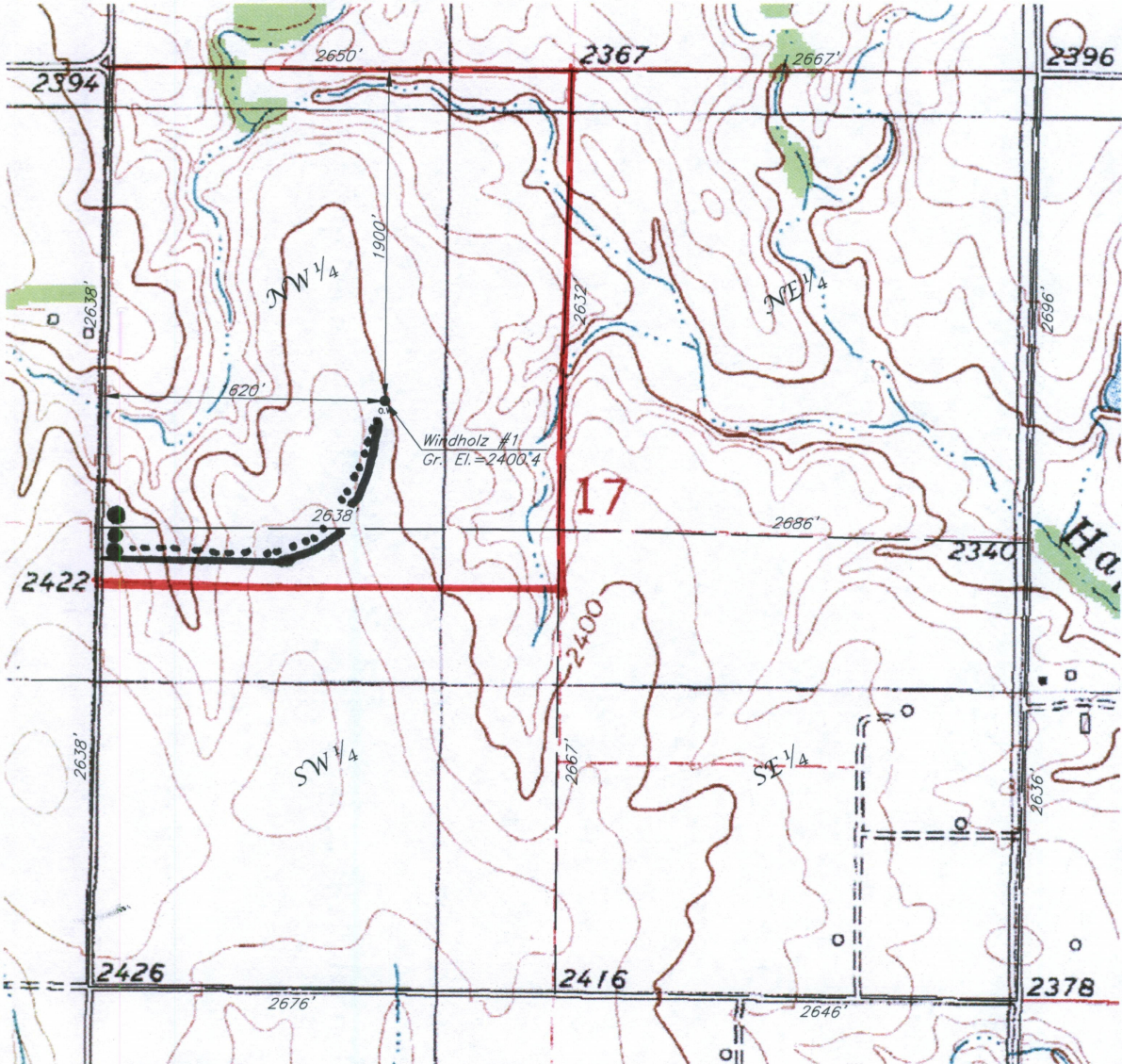
BILL TO:

NW 1/4, SE 1/4, NW 1/4 Section 17, T10S, R23W
LOCATION

March 9, 2012
DATE

Windholz #1
LEASE LOCATION NO.

Graham
COUNTY



..... Power + lead line
—— Lease road
●●● Tank battery
—— Lease line



Elevations based on a USGS Quad Map Elevation tied to the Northwest Corner of Section 17, T10S, R23W. Elev.=2394.00

This Survey does not constitute a boundary survey.

Scale: 1" = 1000'