

T33S, R8W, 6th P.M.

SGOMI

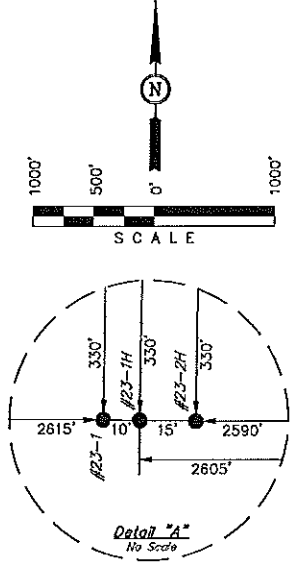
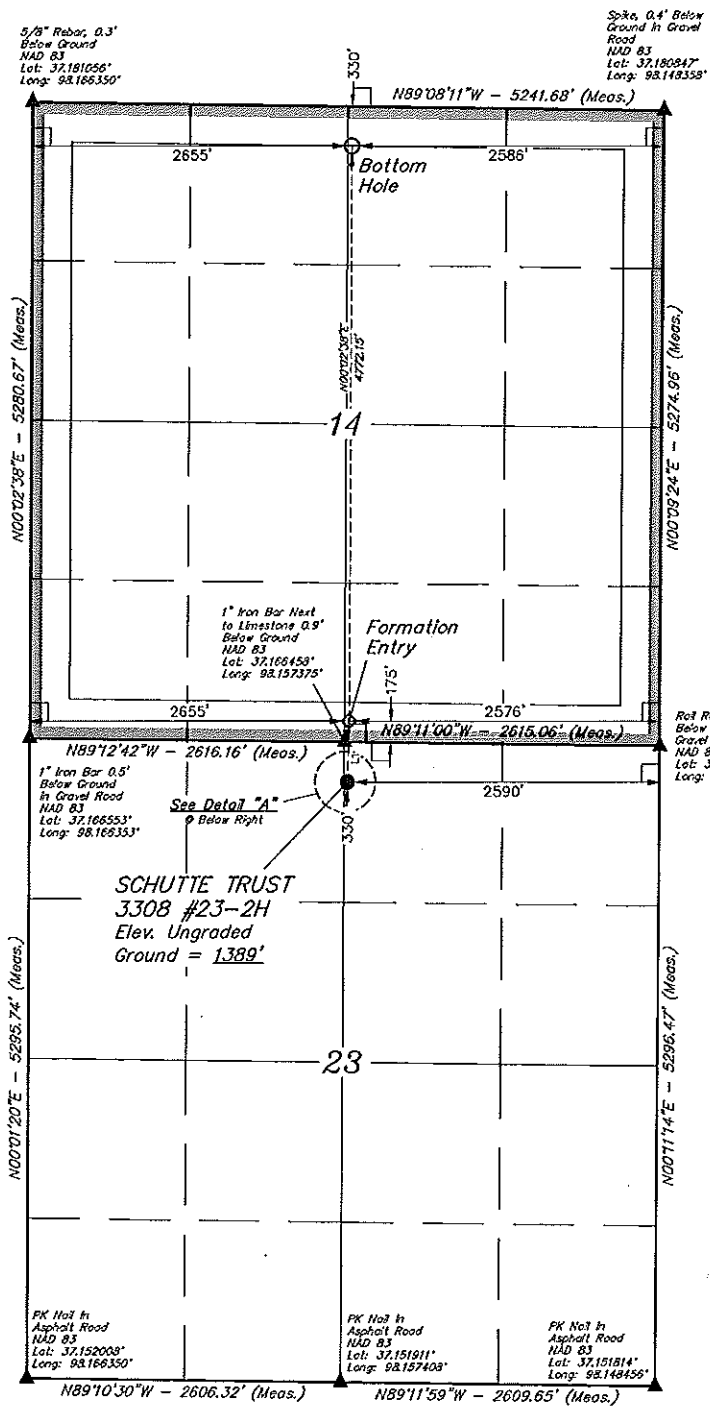
Well location, SCHUTTE TRUST 3308 #23-2H, located as shown in the NW 1/4 NE 1/4 of Section 23, T33S, R8W, 6th P.M., Harper County, Kansas.

BASIS OF ELEVATION

SPOT ELEVATION LOCATED AT THE NORTHEAST CORNER OF SECTION 22, T33S, R7W, 6th P.M. TAKEN FROM THE ANTHONY, QUADRANGLE, KANSAS, HARPER COUNTY, 7.5 MINUTE QUAD (TOPOGRAPHIC MAP) PUBLISHED BY THE UNITED STATES DEPARTMENT OF THE INTERIOR, GEOLOGICAL SURVEY, SAID ELEVATION IS MARKED AS BEING 1348 FEET.

BASIS OF BEARINGS

BASIS OF BEARINGS IS A G.P.S. OBSERVATION.



CERTIFICATE
 THIS IS TO CERTIFY THAT THE ABOVE PLAT WAS PREPARED FROM THE FIELD NOTES OF ACTUAL SURVEYS MADE BY ME OR UNDER MY SUPERVISION AND THAT THE SAME ARE TRUE AND CORRECT TO THE BEST OF MY KNOWLEDGE AND BELIEF.
 REGISTERED LAND SURVEYOR
 REGISTRATION NO. 12345
 STATE OF KANSAS

LEGEND:
 L = 90° SYMBOL
 ● = PROPOSED WELL HEAD.
 ▲ = SECTION CORNERS LOCATED.

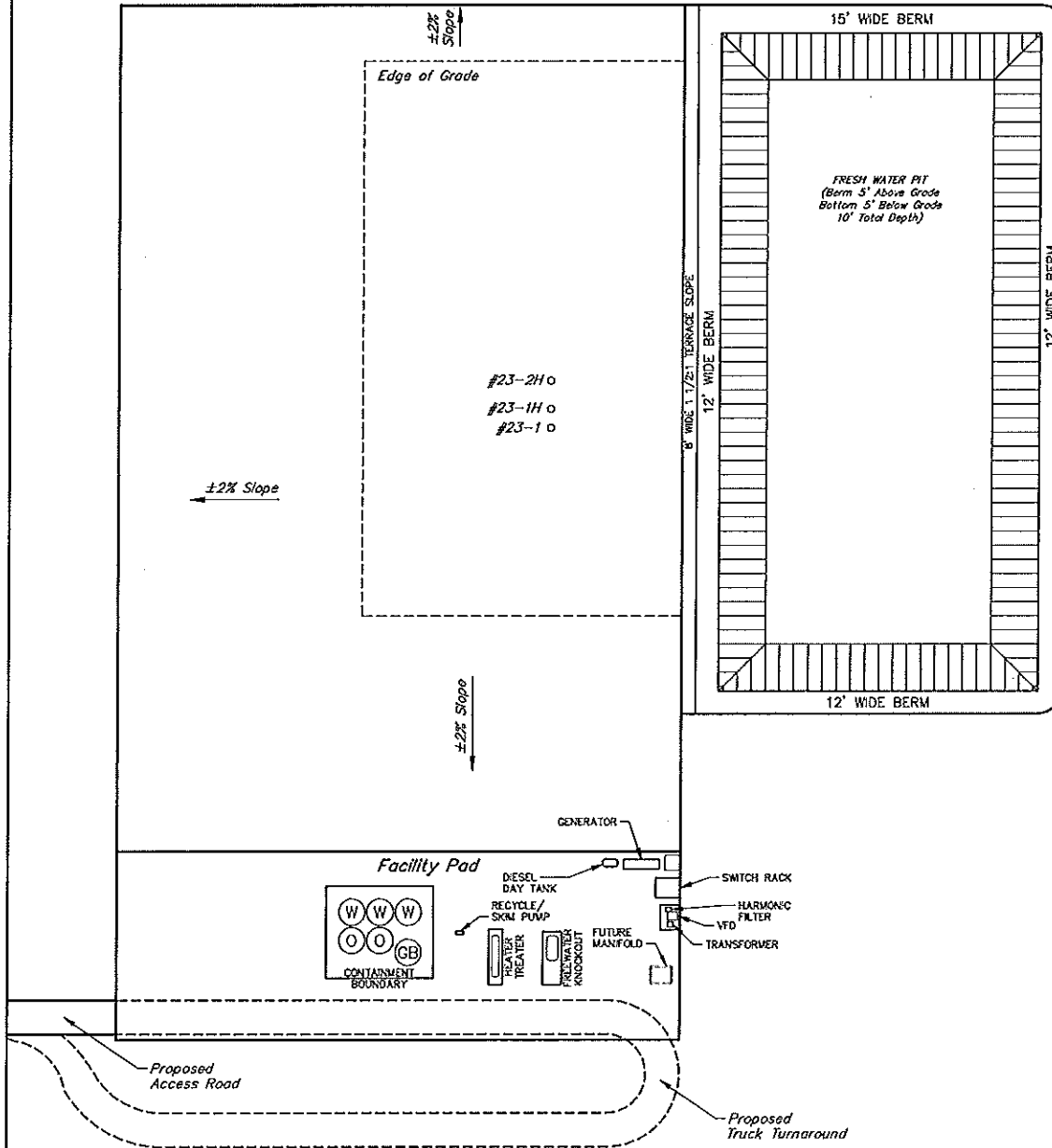
LINE TABLE		
LINE	DIRECTION	LENGTH
L1	N01°41'42"E	505.05'

UINTAH ENGINEERING & LAND SURVEYING 85 SOUTH 200 EAST - VERNAL, UTAH 84078 (435) 789-1017		
SCALE 1" = 1000'	DATE SURVEYED: 02-17-12	DATE DRAWN: 02-29-12
PARTY L.S. C.C.	REFERENCES C.L.O. PLAT	
WEATHER COLD	FILE SGOMI	

NAD 83 (#23-2H TARGET BOTTOM HOLE) LATITUDE = 37°10'48.16" (37.180044) LONGITUDE = 98°09'28.05" (98.157235)	NAD 83 (#23-2H FORMATION ENTRY) LATITUDE = 37°10'09.93" (37.166930) LONGITUDE = 98°09'28.07" (98.157242)	NAD 83 (#23-2H SURFACE LOCATION) LATITUDE = 37°09'55.99" (37.165533) LONGITUDE = 98°09'28.25" (98.157292)
NAD 27 (#23-2H TARGET BOTTOM HOLE) LATITUDE = 37°10'48.08" (37.180022) LONGITUDE = 98°09'24.81" (98.156892)	NAD 27 (#23-2H FORMATION ENTRY) LATITUDE = 37°10'09.90" (37.166917) LONGITUDE = 98°09'24.83" (98.156897)	NAD 27 (#23-2H SURFACE LOCATION) LATITUDE = 37°09'55.90" (37.165528) LONGITUDE = 98°09'25.01" (98.156947)

SGOMI
PRODUCTION FACILITY LAYOUT FOR
SCHUTTE TRUST 3308 #23-1, #23-1H & #23-2H
SECTION 23, T33S, R8W, 6th P.M.
N 1/2 N 1/2

FIGURE #3
 SCALE: 1" = 60'
 DATE: 02-29-12
 DRAWN BY: C.C.



T33S, R8W, 6th P.M.

SGOMI

PURCHASE PARCEL

(For SCHUTTE TRUST

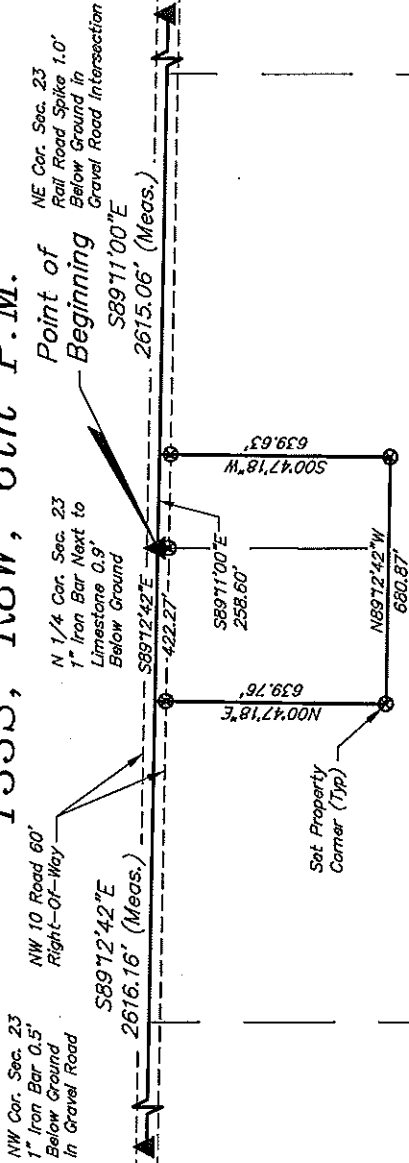
#23-1, #23-1H & #23-2H)

LOCATED IN

SECTION 23, T33S, R8W, 6th P.M.,
HARPER COUNTY, KANSAS

BASIS OF BEARINGS

BASIS OF BEARINGS IS A G.P.S. OBSERVATION.



NW 1/4

NE 1/4

PURCHASE PARCEL LEGAL DESCRIPTION

A TRACT OF LAND LOCATED IN THE N1/2 OF SECTION 23, T33S, R8W OF THE 6TH P.M., COUNTY OF HARPER, STATE OF KANSAS, DESCRIBED AS FOLLOWS:

BEGINNING AT THE N1/4 CORNER OF SAID SECTION 23, FROM WHICH THE NORTHEAST CORNER OF SAID SECTION 23 BEARS S89°11'00"E, THENCE S89°11'00"E, 258.60 FEET ALONG THE NORTH LINE OF THE NE1/4 OF SAID SECTION 23;

THENCE S00°47'18"W, 639.63 FEET;

THENCE N89°12'42"W, 680.87 FEET;

THENCE N00°47'18"E, 639.76 FEET TO THE NORTH LINE OF THE NW1/4 OF SAID SECTION 23;

THENCE S89°12'42"E, 422.27 FEET ALONG THE NORTH LINE OF THE NW1/4 OF SAID SECTION 23 TO THE N1/4 CORNER OF SAID SECTION 23 AND THE TRUE POINT OF BEGINNING.

GROSS AREA = 10.000 ACRES, MORE OF LESS
NET AREA EXCLUDING 30' ROW FOR NW 10 ROAD = 9.531 ACRES

LEGAL DESCRIPTION PREPARED 2/23/12 BY:

MARK JOHANNES, LS 1360
FOR AND ON BEHALF OF

UNTAH ENGINEERING & LAND SURVEYING
2970 W. 29TH STREET, SUITE 17
GREELEY, CO 80631

LEGEND:

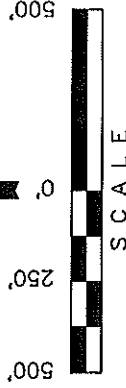
▲ = SECTION CORNERS LOCATED.

⊗ = PROPERTY CORNERS SET
(5/8" REBAR AND 2" ALUM. CAP LS 1360)

Sec. 23

S 1/4 Cor. Sec. 23
PK Nail in
Asphalt Road

SE 1/4



CERTIFICATE

THIS IS TO CERTIFY THAT THE ABOVE PLANS WAS PREPARED FROM FIELD NOTES OF ACTUAL SURVEYS MADE BY ME OR UNDER MY SUPERVISION AND THAT THE SAME ARE TRUE AND CORRECT TO THE BEST OF MY KNOWLEDGE AND BELIEF.

JOHN W. JOHANNES
REGISTERED LAND SURVEYOR
REGISTRATION NO. 4586
STATE OF KANSAS SURV-12

UNTAH ENGINEERING & LAND SURVEYING

85 SOUTH 200 EAST - VERNAL, UTAH 84078

(435) 789-1017

SCALE 1" = 500'	DATE SURVEYED: 12-20-11	DATE DRAWN: 01-09-12
PARTY L.S. K.H. C.C.	REFERENCES G.L.O. PLAT	
WEATHER COLD	FILE SGOMI	

Schutte Trust 3308 23-2H

Section 14, 33S-8W

All of the section, containing 640 acres, more or less

- Oil and Gas Lease dated January 26, 2011, by and between Diane Lockwood Blazak, as Lessor and Shell Gulf of Mexico Inc., as Lessee, recorded in the office of the Register of Deeds, Harper County, Kansas in Book G.
- Oil and Gas Lease dated January 26, 2011, by and between First National Bank of Hutchinson, Kansas, as Trustee for Deidre Lockwood Van Tungeln, pursuant to the "Special Provision for Deidre Lockwood Van Tungeln" as set forth for her in Article V of the Ralph H. Lockwood Trust, dated July 11, 1989, as Lessor and Shell Gulf of Mexico Inc., as Lessee, recorded in the office of the Register of Deeds, Harper County, Kansas in Book G.
- Oil and Gas Lease dated January 26, 2011, by and between Chester David Lockwood, as Lessor and Shell Gulf of Mexico Inc., as Lessee, recorded in the office of the Register of Deeds, Harper County, Kansas in Book G.
- Oil and Gas Lease dated January 26, 2011, by and between Paul and Janet Lockwood Family Trust Agreement, dated February 17, 2004, by John Neal Lockwood, Trustee, as Lessor and Shell Gulf of Mexico Inc., as Lessee, recorded in the office of the Register of Deeds, Harper County, Kansas.

Forming a unit consisting of 640 acres, more or less