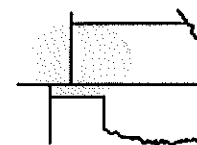


**Pro-Stake LLC**  
 Oil Field & Construction Site Staking  
 P.O. Box 2324  
 Garden City, Kansas 67846  
 Office/Fax: (620) 276-6159  
 Cell: (620) 272-1499



**n030912-t**  
 PLAT NO.

**9905**  
 INVOICE NO.

**Ritchie Exploration Inc.**  
 OPERATOR

**#1 Peintner 2C**  
 LEASE NAME

**Ford County, KS**  
 COUNTY

**2 26s 22w**  
 Sec. Twp. Rng.

**1990' FSL - 2290' FWL**  
 LOCATION SPOT

SCALE: 1" = 1175'  
 DATE: Mar. 8<sup>th</sup>, 2012  
 MEASURED BY: Luke R.  
 DRAWN BY: Luke R.  
 AUTHORIZED BY: Justin C.

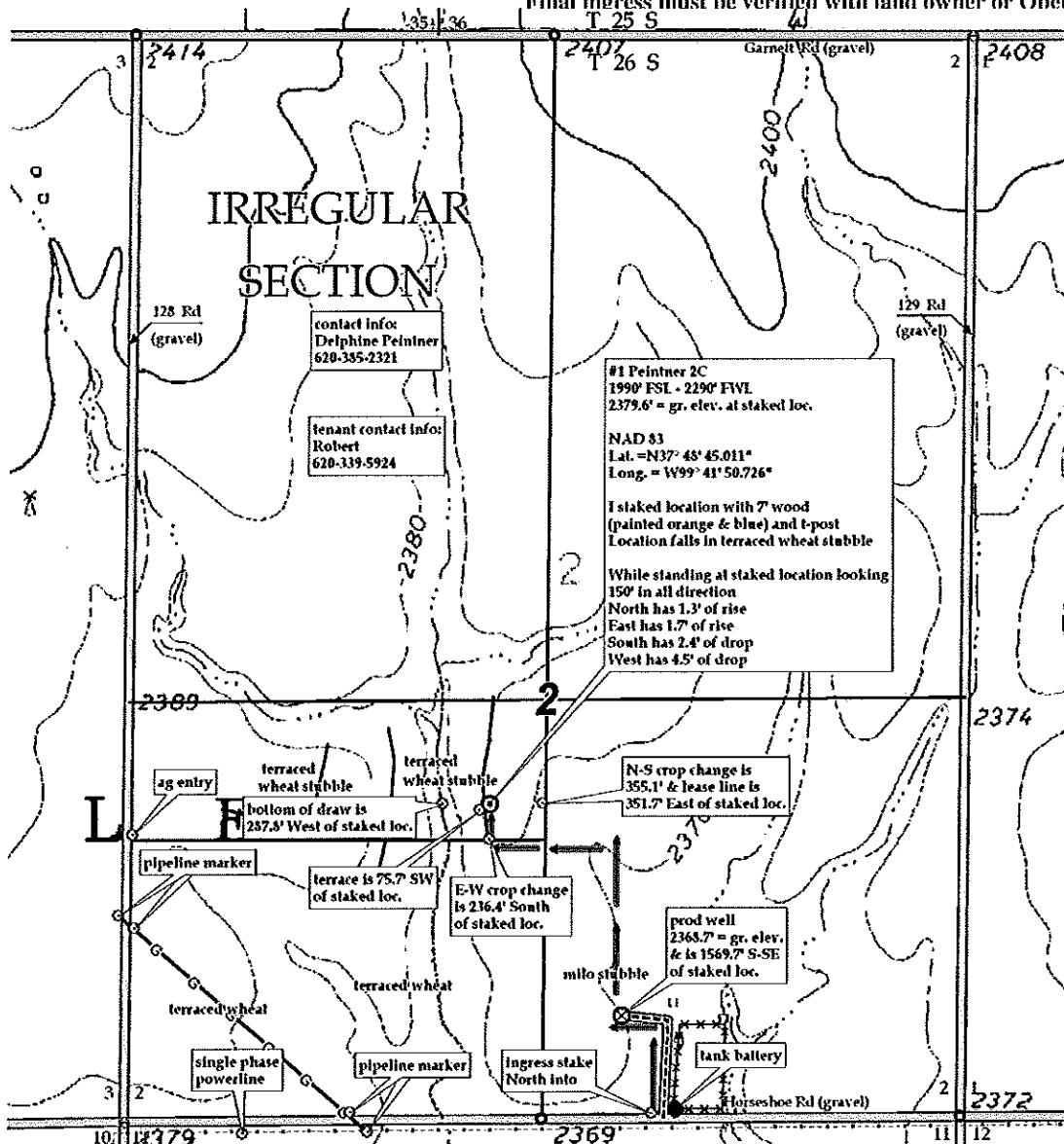


GR. ELEVATION: **2379.6'**

**Directions:** From the NW side of Spearville, Ks at the intersection of Hwy 50 & Lake Rd. North & Main St. South – Now go 0.4 miles SE on Main St. – Now go 0.1 mile East on Davis St – Now go 1.5 miles South on Spearville Ford Rd – Now go 2.6 miles East on Garnett Rd to the NW corner of section 2-26s-22w – Now go 1.25 mile South on 128 Rd – Now go 0.6 mile East on Horseshoe Rd to ingress stake North into – Now go 0.1 mile North on lease rd – Now go 0.1 mile West to prod well – Now go approx. 1100' North through milo stubble – Now go approx. 460' West through milo stubble & 350' West through terraced wheat stubble – Now go 236' North through wheat stubble into staked location.

Final ingress must be verified with land owner or Operator.

This drawing does not constitute a monumented survey or a land survey plat.  
This drawing is for construction purposes only.

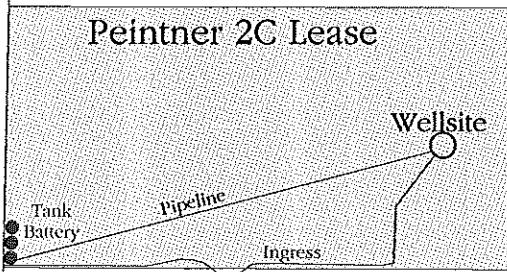


KANSAS SURFACE OWNER NOTIFICATION ACT

R 22 W

T  
26  
S

2



SCALE = 1 : 12,000

FORD COUNTY, KANSAS