

GEOLOGIST'S REPORT

DRILLING TIME AND SAMPLE LOG

BACH OIL PRODUCTION

WELL: JK UNIT#1

LOC.: 250' FNL & 1840' FWL
 SEC. 13-1-19W
 PHILLIPS COUNTY, KANSAS
 API: 15-147-20667-00-00

DRILLING CONTR.: MURFIN RIG #16
 SPUD: 02-22-12 COMP: 02-26-12
 MUD UP: 2950' TYPE MUD: CHEM.
 DRILL TIME: 3000 to' RTD
 RTD: 3640' LTD: 3642'
 SAMPLES SAVED: 3050'-RTD
 GEOLOGIST: ROBERT J. PETERSEN

ELEVATION

KB: 2152
 GL: 2147
 LOG MEASURED
 FROM: KB

SURFACE CASING

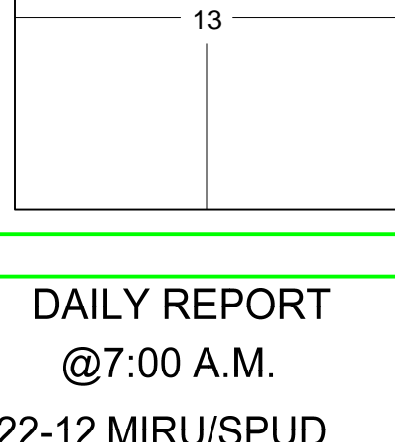
20# 8 5/8 "
 Casing set @ 230
 w/160 SX

PRODUCTION CASING

5 1/2" Casing set
 WELL LOG SURVEYS
 DIL/CDL/MICRO

ELECTRIC LOG TOPS

FORMATION	DEPTH	DATUM	POS.
Stone Corral	1780	+372	+2
Base Stone Corral	1802	+350	+2
Topeka	3132	-980	-3
Heebner	3337	-1185	-4
Toronto	3365	-1213	-4
Lansing	3384	-1232	-5
Stark	3558	-1406	-3
BKC	3600	-1448	-4



REFERENCE WELL:

Bach Oil Prod.
 Jessup Unit #1
 300' FSL & 790' FEL
 11-1-19W

DAILY REPORT

@7:00 A.M.

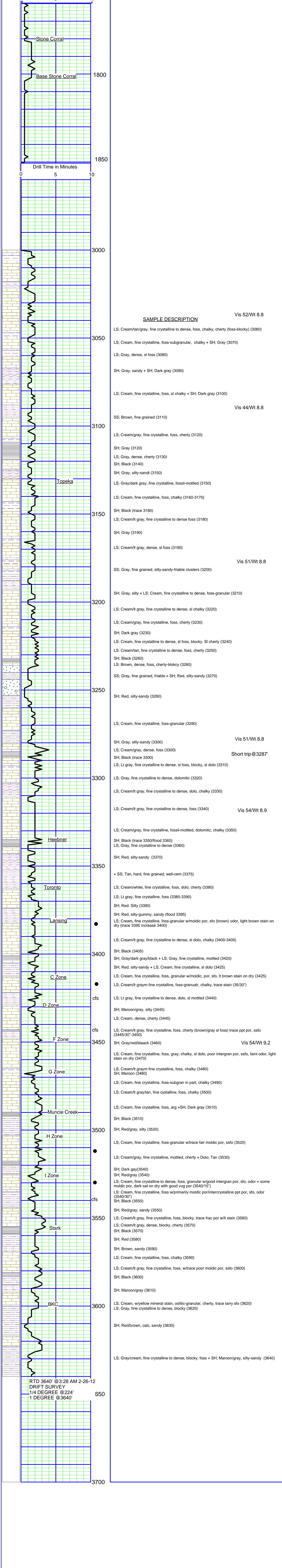
2-22-12 MIRU/SPUD
 2-23-12 300' Drilling
 2-24-12 2223' Drilling
 2-25-12 3286' Drilling
 2-26-12 3640' TOH for log

REMARKS AND RECOMMENDATIONS

Production casing has been run to further test this well for commercial production.

Respectfully submitted,

Robert J. Petersen
 Robert J Petersen



RTD 3640' @ 3:28 AM 2-26-12
 DRIFT SURVEY
 1/4 DEGREE @ 224'
 1 DEGREE @ 3640'