

ADVANTAGE ELEVATIONS

OIL FIELD SURVEYORS

BOX 8604 - PRATT, KS 67124
(620) 672-6491

311122

INVOICE NO.

FALCON EXPLORATION INC

OPERATOR

1-22

NO.

M. ESAU (SE)

FARM

Gray

COUNTY

22

S

28s

T

30w

R

977' FSL & 1857' FEL

LOCATION

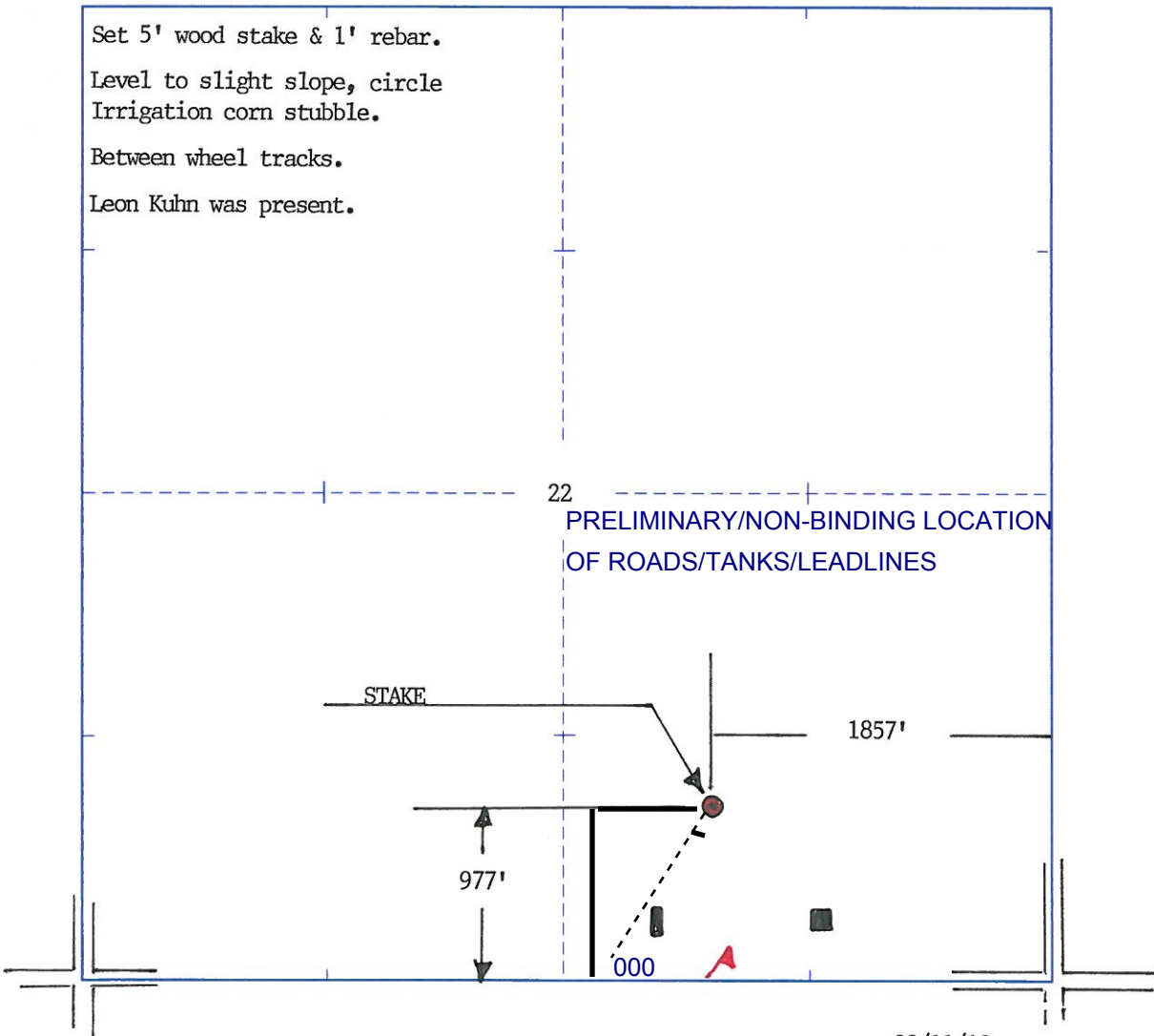
ELEVATION: 2772' GR



FALCON EXPLORATION INC
125 N Market St., Ste 1252
Wichita KS 67202

AUTHORIZED BY: Leon Kuhn

SCALE: 1" = 1000'



DATE STAKED: 03/11/12