

T33S, R10W, 6th P.M.

SGOMI

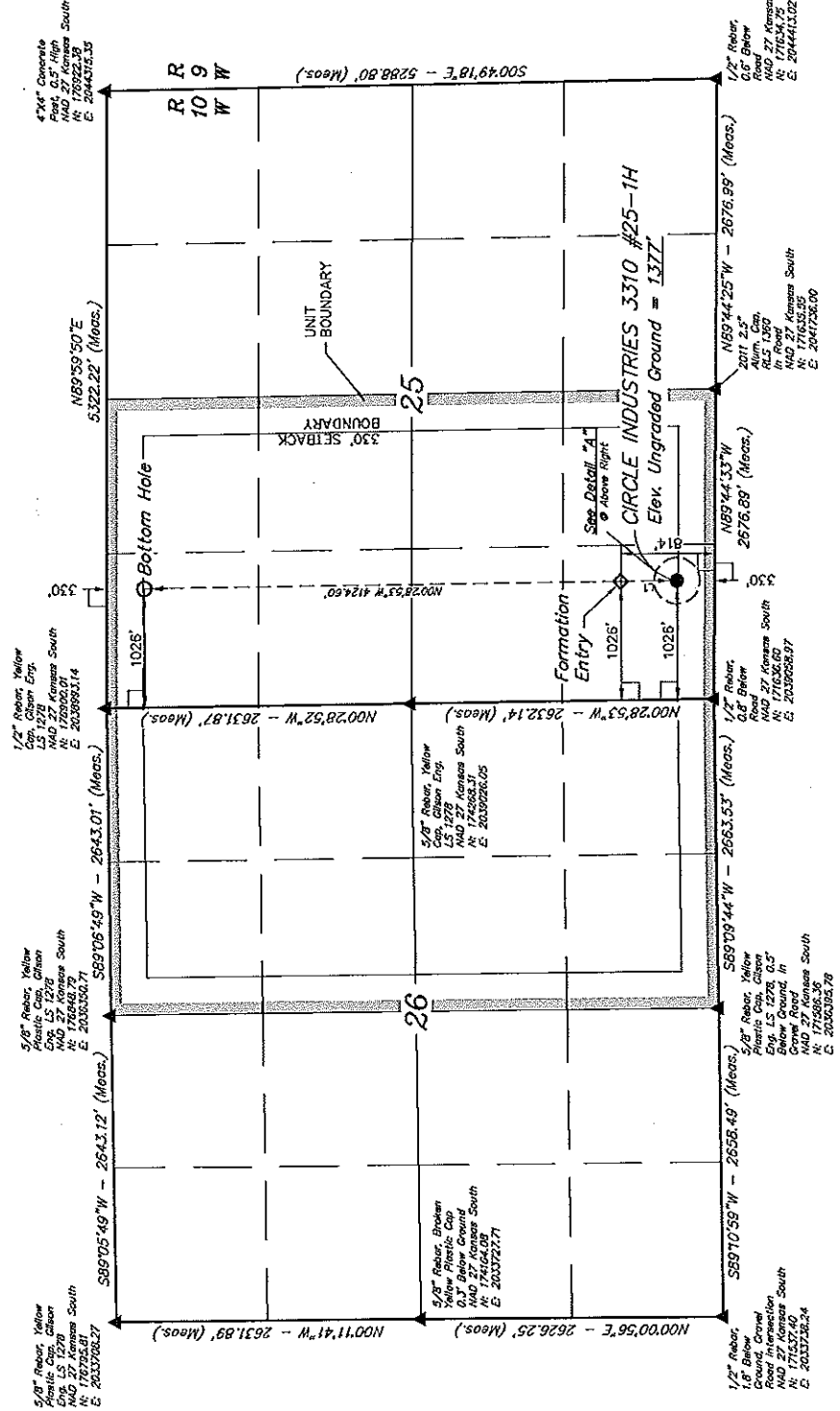
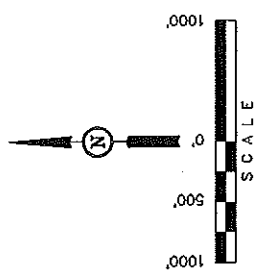
Well location, CIRCLE INDUSTRIES 3310 #25-1H, located as shown in the SW 1/4 SW 1/4 of Section 25, T33S, R10W, 6th P.M., Barber County, Kansas.

BASIS OF ELEVATION

SPOT ELEVATION LOCATED AT THE NORTHEAST CORNER OF SECTION 22, T33S, R7W, 6th P.M. TAKEN FROM THE ANTHONY, QUADRANGLE, KANSAS, HARPER COUNTY, 7.5 MINUTE QUAD (TOPOGRAPHIC MAP) PUBLISHED BY THE UNITED STATES DEPARTMENT OF THE INTERIOR, GEOLOGICAL SURVEY. SAID ELEVATION IS MARKED AS BEING 1348 FEET.

BASIS OF BEARINGS

BASIS OF BEARINGS IS A G.P.S. OBSERVATION.



CERTIFICATE

THIS IS TO CERTIFY THAT THE ABOVE REPRESENTS THE TRUE AND CORRECT LOCATION OF THE SURVEYED POINTS AND THAT THE SAID SURVEY WAS SUPERVISED AND THAT THE SAID SURVEY IS THE BEST OF MY KNOWLEDGE AND BELIEF.

REGISTERED LAND SURVEYOR
STATE OF KANSAS
LS 1760

REVISED: 03-16-12 C.C.
REVISED: 11-01-11 C.C.
REVISED: 10-14-11 C.C.

LINE TABLE

LINE	BEARING	LENGTH
L1	N00°28'14" W	484.05'

URUTAH ENGINEERING & LAND SURVEYING
85 SOUTH 200 EAST - VERNAL, UTAH 84078
(435) 789-1017

SCALE 1" = 1000'

DATE SURVEYED: 09-13-11 09-20-11

REFERENCES: G.L.O. PLAT

PARTY: L.S. K.H. C.C.

WEATHER: WARM

FILE: SCOMI

LEGEND:

- = 90° SYMBOL
- = PROPOSED WELL HEAD
- ▲ = SECTION CORNERS LOCATED.

NAD 83 (62-1H) TARGET BOTTOM HOLE
LATITUDE = 37°08'53.5" (37.151347)
LONGITUDE = 98°27'45.98" (98.463855)
STATE PLANE NAD 83
N: 1785744.41 E: 2046025.35

NAD 83 (62-1H) FORMATION ENTRY
LATITUDE = 37°08'24.79" (37.140259)
LONGITUDE = 98°27'45.98" (98.463855)
STATE PLANE NAD 83
N: 1785744.41 E: 2046025.35

NAD 83 (62-1H) SURFACE LOCATION
LATITUDE = 37°08'20.00" (37.138889)
LONGITUDE = 98°27'45.98" (98.463855)
STATE PLANE NAD 83
N: 1785744.41 E: 2046025.35

T33S, R10W, 6th P.M.

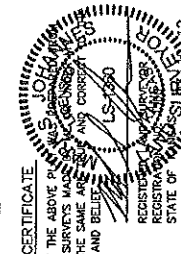
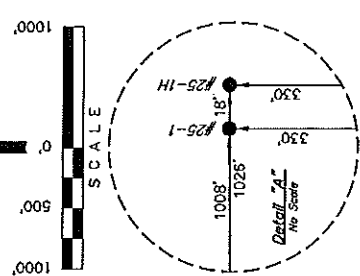
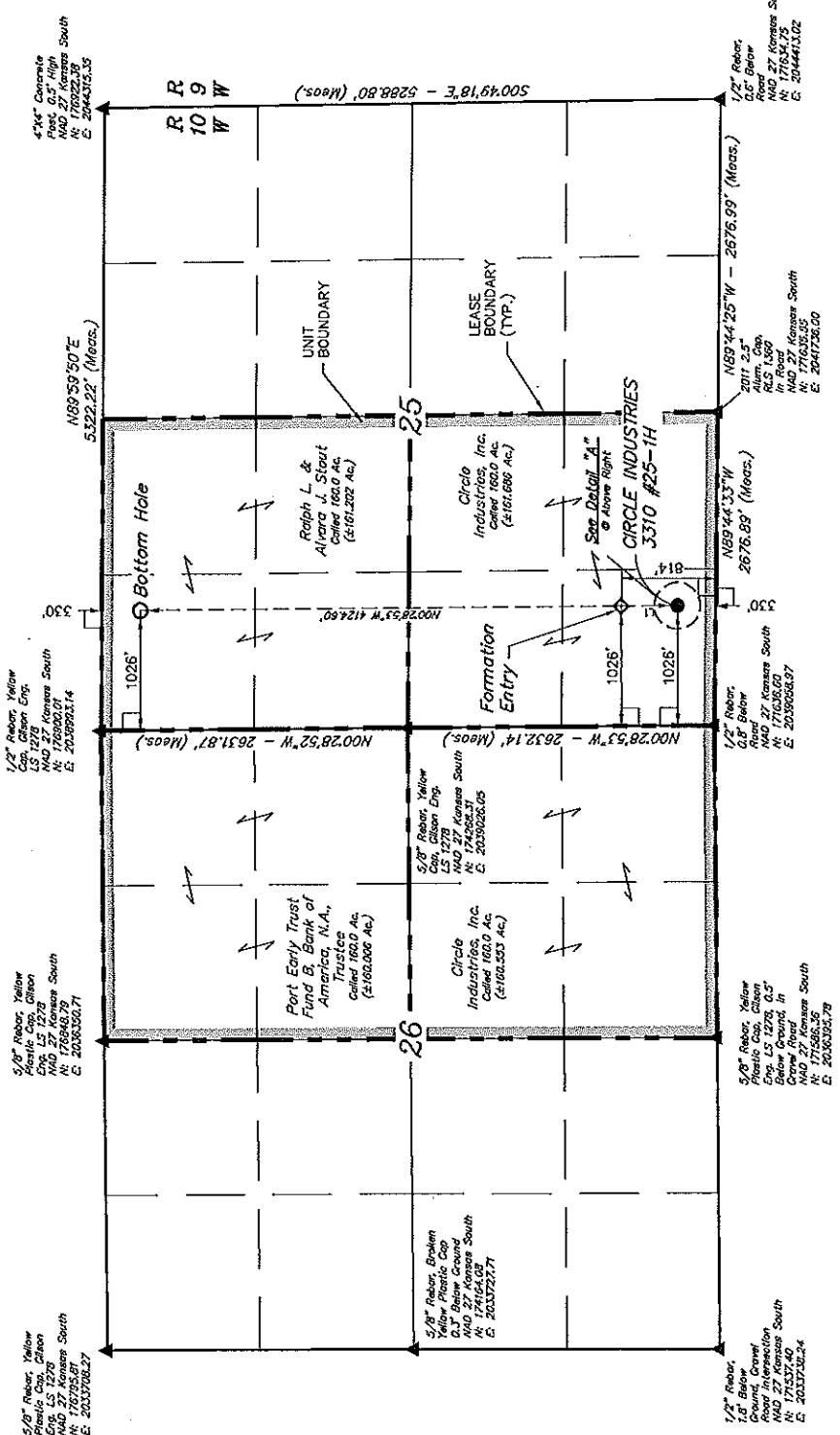
SC0M1

UNIT BOUNDARY PLAT
 (For **CIRCLE INDUSTRIES 3310**
#25-1 & #25-1H)

Located in
 Section 25, T33S, R10W, 6th P.M.
 Barber County, Kansas

BASIS OF BEARINGS

BASIS OF BEARINGS IS A G.P.S. OBSERVATION.
CIRCLE INDUSTRIES 3310 UNIT
 Called 640.00 Acres



THIS IS TO CERTIFY THAT THE ABOVE PLAT WAS PREPARED UNDER MY SUPERVISION AND THAT THE SAME ARE TRUE AND CORRECT TO THE BEST OF MY KNOWLEDGE AND BELIEF.

REVISED: 03-16-12 C.C.

UTAH ENGINEERING & LAND SURVEYING
 95 SOUTH 200 EAST - VERNAL, UTAH 84078
 (435) 789-1017

LINE	BEARING	LENGTH
L1	N00°28'14"W	484.05'

LINE	BEARING	LENGTH
L1	N00°28'14"W	484.05'

LINE	BEARING	LENGTH
L1	N00°28'14"W	484.05'

LINE	BEARING	LENGTH
L1	N00°28'14"W	484.05'

LEGEND:
 — = 90° SYMBOL
 ● = PROPOSED WELL HEAD.
 ▲ = SECTION CORNERS LOCATED.

LINE	BEARING	LENGTH
L1	N00°28'14"W	484.05'

LINE	BEARING	LENGTH
L1	N00°28'14"W	484.05'

LEGEND:
 — = 90° SYMBOL
 ● = PROPOSED WELL HEAD.
 ▲ = SECTION CORNERS LOCATED.

SGOMI

PLOT PLAN FOR

CIRCLE INDUSTRIES 3310 #25-1 & #25-1H
SECTION 25, T33S, R10W, 6th P.M.
SE 1/4 SW 1/4

SCALE: 1" = 60'
DATE: 03-01-12
DRAWN BY: C.C.

