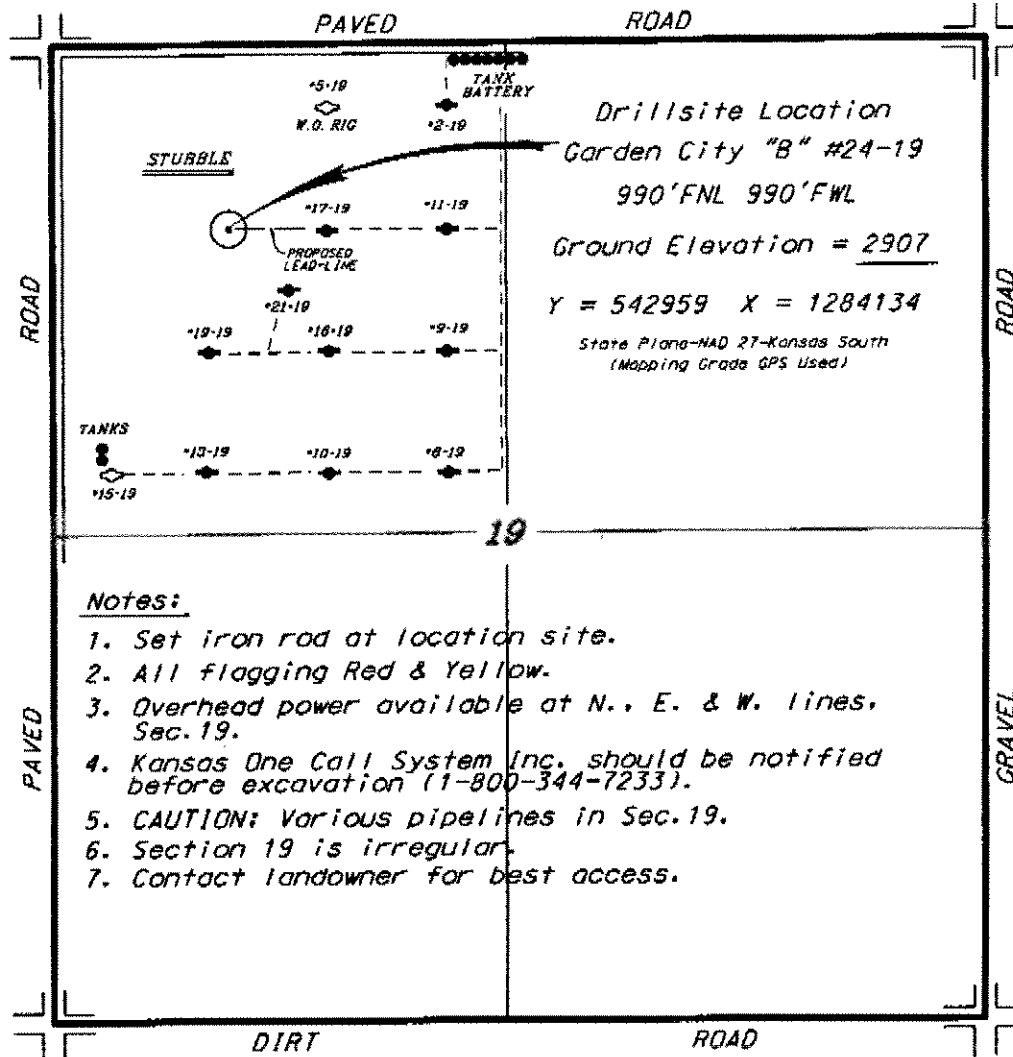
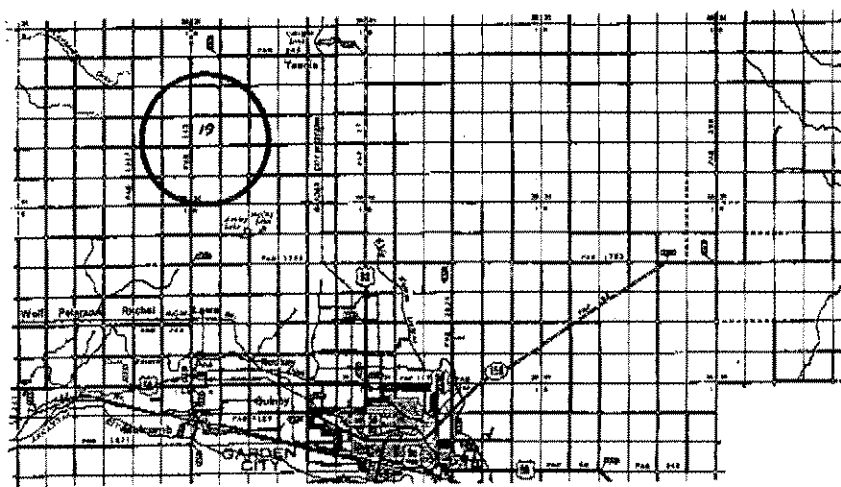


ATLAS OPERATING, LLC
GARDEN CITY LEASE
NW. 1/4, SECTION 19, T22S, R33W
FINNEY COUNTY, KANSAS



* Ingress and egress to location as shown on this plan is per usage only and may not be legally opened for public use. Contact landowner. Tenant and county road clearance for access.

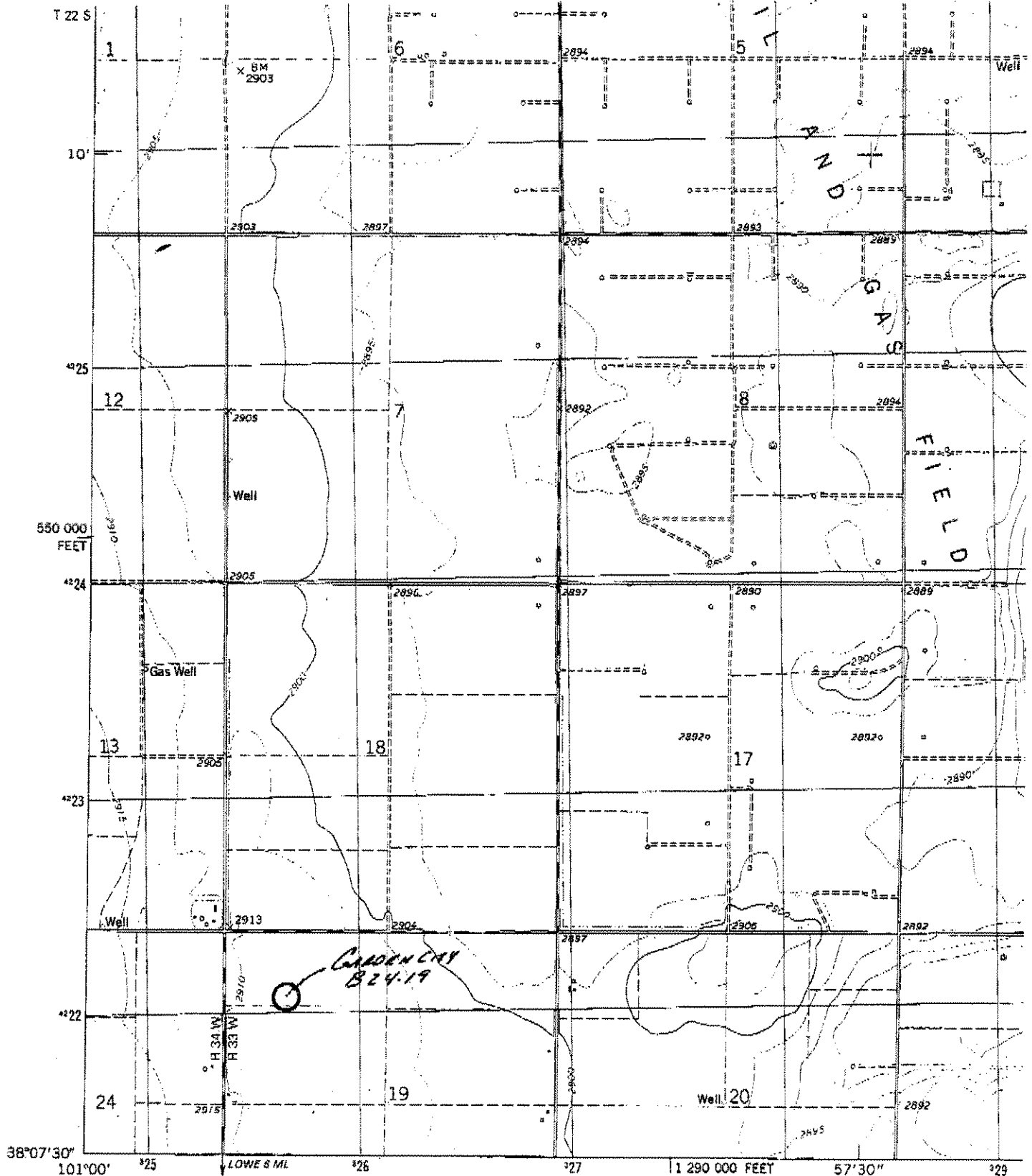


* Controlling data is based upon the best maps and photographs available to us and upon a regular section of land containing 360 acres.

* Approximate section lines were determined using the normal standards of care of oilfield surveyors practicing in the state of Kansas. The section corners, which establish the precise section lines, were not necessarily located, and the exact location of the drillsite location in the section is not guaranteed. Therefore, the operator acquiring this service and accepting this site and all other parties relying thereon agree to hold Central Kansas Oilfield Services, Inc., its officers and employees harmless from all losses, costs and expenses and said entities released from any liability from incidental or consequential damages.

* Elevations derived from National Geodetic Vertical Datum.

Date March 8, 2012



WOLFF
5780 USE

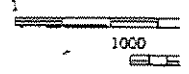
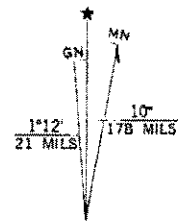
Mapped, edited, and published by the Geological Survey
in cooperation with State of Kansas agencies

Control by USGS and NOS/NOAA

Topography by photogrammetric methods from aerial
photographs taken 1974. Field checked 1976

Projection and 10,000-foot grid ticks: Kansas coordinate
system, south zone (Lambert conformal conic)
1000-meter Universal Transverse Mercator grid, zone 14
1927 North American datum

Fine red dashed lines indicate selected fence and field lines where
generally visible on aerial photographs. This information is unchecked



UTM GRID AND 1976 MAGNETIC NORTH
DECLINATION AT CENTER OF SHEET

FOR SALE BY U.S.