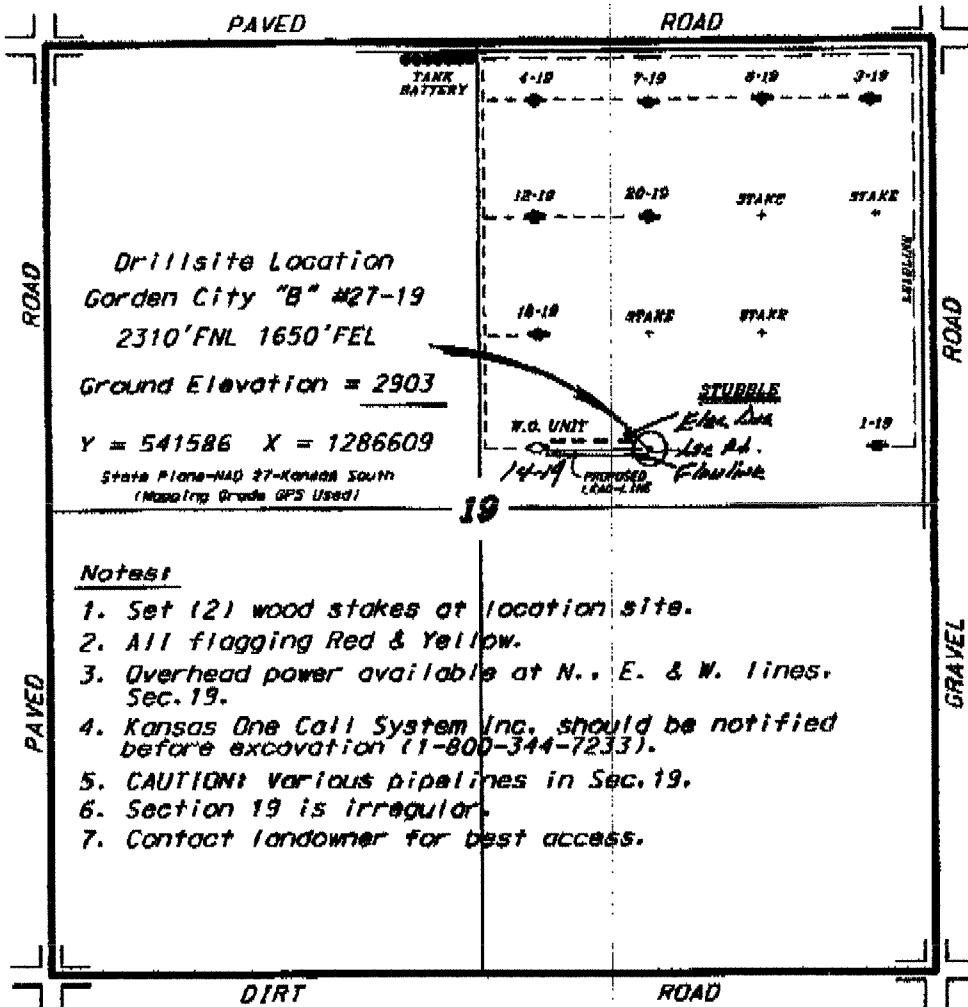


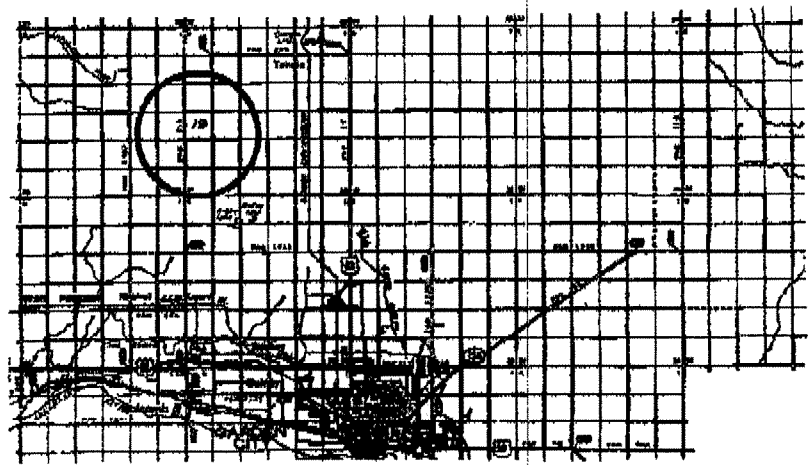
ATLAS OPERATING, LLC
 GARDEN CITY LEASE
 NE. 1/4, SECTION 19, T22S, R33W
 FINNEY COUNTY, KANSAS



Drillsite Location
 Garden City "B" #27-19
 2310'FNL 1650'FEL
 Ground Elevation = 2903
 Y = 541586 X = 1286609
 State Plane-NAD 27-Kansas South
 (Mapping Grade GPS Used)

- Notes**
1. Set (2) wood stakes at location site.
 2. All flagging Red & Yellow.
 3. Overhead power available at N., E. & W. lines, Sec. 19.
 4. Kansas One Call System Inc. should be notified before excavation (1-800-344-7233).
 5. CAUTION! Various pipelines in Sec. 19.
 6. Section 19 is irregular.
 7. Contact landowner for best access.

* Ingress and egress to location as shown on this plot is per acre only and may not be legally obtained for public use. Contact the mineral tenant and county road department for access.



* Elevation data is based upon the best data and elevations available to us and upon a regular section of land containing 240 acres.
 * Elevation section lines were determined using the normal standards of care of oilfield services operators in the state of Kansas. The section corners, which establish the precise section lines, were not necessarily located, and the exact location of the drilling location in the section is not guaranteed. Therefore, the operator assuming this service and accepting this site and all other parties relying thereon agree to hold Central Kansas Oilfield Services, Inc., its officers and employees harmless from all claims, suits and damages and also liabilities arising from the location of this wellbore or associated damages.
 * Elevation derived from National Geodetic Vertical Datum

Date March 8, 2012