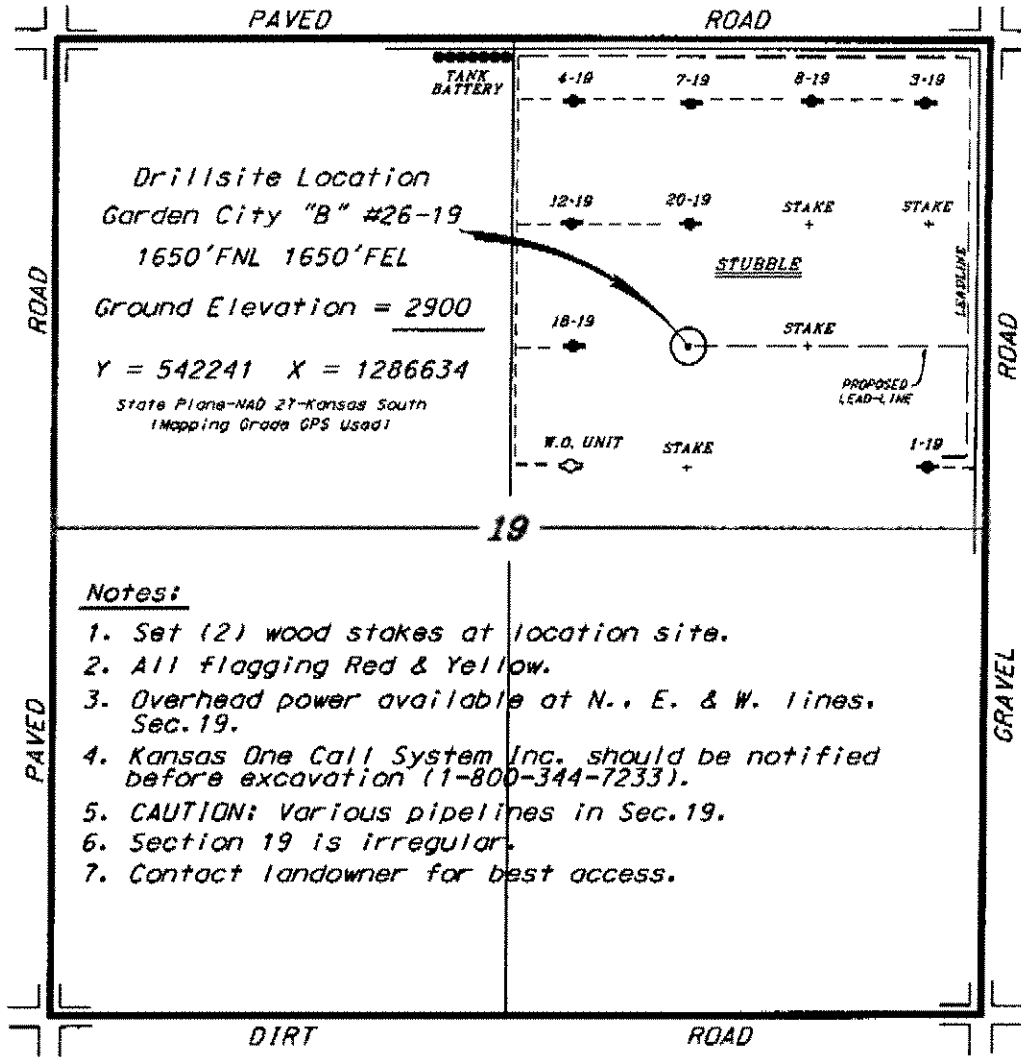


ATLAS OPERATING, LLC
GARDEN CITY LEASE
NE. 1/4, SECTION 19, T22S, R33W
FINNEY COUNTY, KANSAS

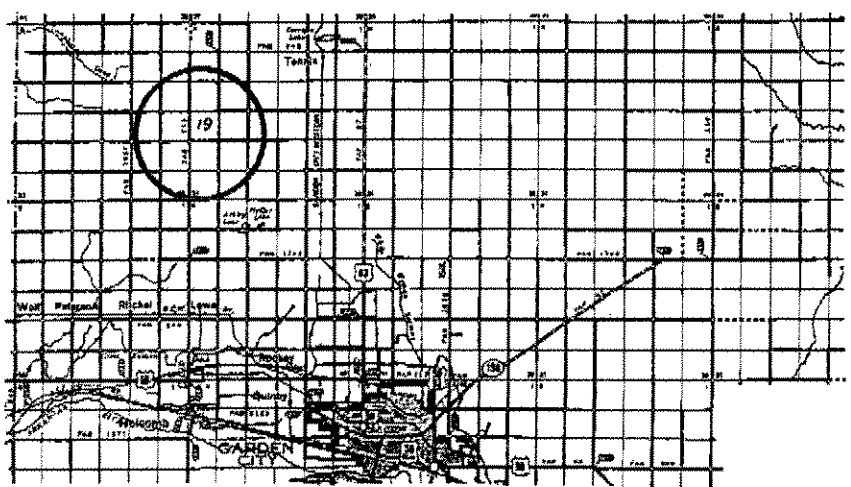


Drillsite Location
Garden City "B" #26-19
1650'FNL 1650'FEL
Ground Elevation = 2900
Y = 542241 X = 1286634
State Plane-NAD 27-Kansas South
(Mapping Grade GPS Used)

Notes:

1. Set (2) wood stakes at location site.
2. All flagging Red & Yellow.
3. Overhead power available at N., E. & W. lines, Sec. 19.
4. Kansas One Call System Inc. should be notified before excavation (1-800-344-7233).
5. CAUTION: Various pipelines in Sec. 19.
6. Section 19 is irregular.
7. Contact landowner for best access.

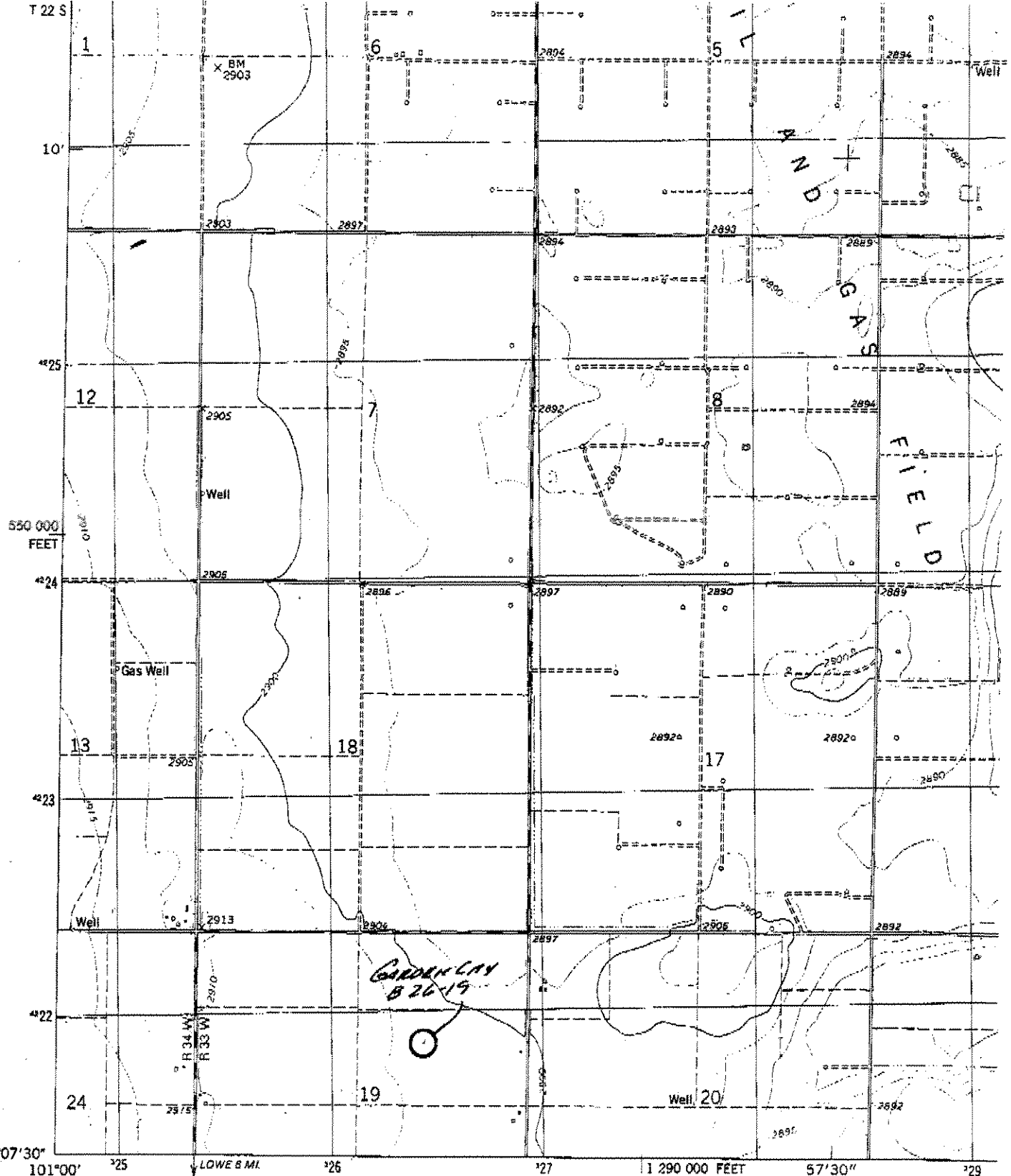
*Ingress and egress to location as shown on this plat is for usage only and may not be legally opened for public use. Contact landowner, tenant and county road department for access.



* Controlling data is based upon the best maps and photographs available to us and upon a regular series of land controlling 640 acres.
 * Approximate section lines were determined using the normal standard of care of oilfield surveyors practicing in the state of Kansas. The section corners, which establish the precise section lines, were not necessarily located, and the exact location of the drillsite location in the section is not guaranteed. Therefore, the operator, securing this service and accepting this plat and all other parties relying thereon agree to hold Central Kansas Oilfield Services, Inc., its officers and employees harmless from all losses, costs and expenses and said entities released from any liability from incidental or consequential damages.
 * Elevations derived from National Geodetic Vertical Datum.

Date March 8, 2012

T 22 S



550 000 FEET

38°07'30"

101°00'

LOWE 8 MI

1 290 000 FEET

57'30"

°29

(WOLF)
5700 ft SE

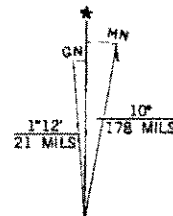
Mapped, edited, and published by the Geological Survey in cooperation with State of Kansas agencies

Control by USGS and NOS/NOAA

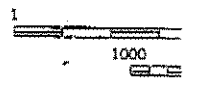
Topography by photogrammetric methods from aerial photographs taken 1974. Field checked 1976

Projection and 10,000-foot grid ticks: Kansas coordinate system, south zone (Lambert conformal conic)
1000-meter Universal Transverse Mercator grid, zone 14
1927 North American datum

Fine red dashed lines indicate selected fence and field lines where generally visible on aerial photographs. This information is unchecked



UTM GRID AND 1976 MAGNETIC NORTH DECLINATION AT CENTER OF SHEET



FOR SALE BY U.S.