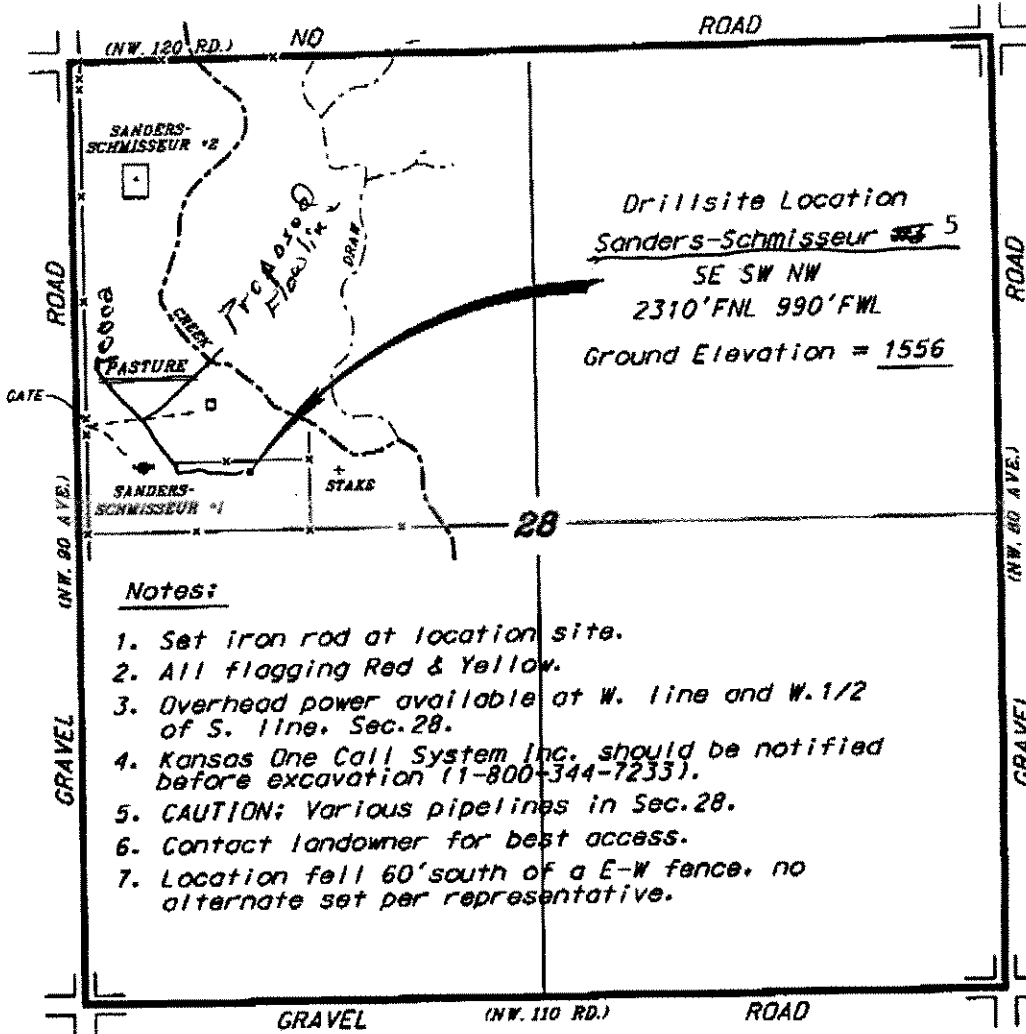


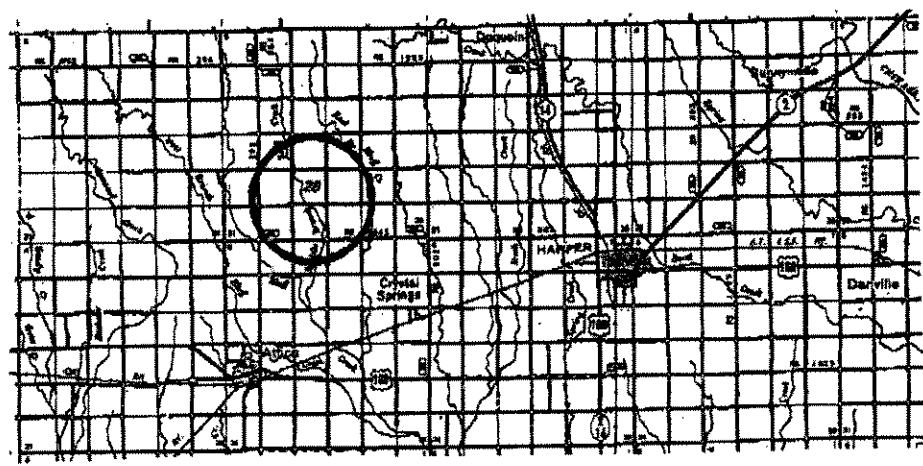
ATLAS OPERATING, LLC
SANDERS-SCHMISSEUR LEASE
NW. 1/4, SECTION 28, T31S, R8W
HARPER COUNTY, KANSAS



ingress and egress to location as shown on this plat is for public use. Contract landowner, Tenant and county Road department for access.

Notes:

1. Set iron rod at location site.
2. All flagging Red & Yellow.
3. Overhead power available at W. line and W. 1/2 of S. line, Sec. 28.
4. Kansas One Call System Inc. should be notified before excavation (1-800-344-7233).
5. CAUTION: Various pipelines in Sec. 28.
6. Contact landowner for best access.
7. Location fell 60' south of a E-W fence, no alternate set per representative.



Controlling data is based upon the best maps and photographs available to us and upon a regular section of land containing 640 acres.

Approximate section lines were determined using the highest standard of care of officials surveyors practicing in the state of Kansas. The section corners, which establish the precise section lines, were not necessarily located and the exact location of the drillsite location in the section is not guaranteed. Therefore, the operator assuming this service and accepting this plat and all other parties relying thereon agree to hold Central Kansas Oilfield Services, Inc., its officers and employees harmless from all losses, costs and expenses and hold entities released from any liability from installation or operational damages.

Elevations derived from National Geodetic Vertical Datum.

August 26, 2010

Date