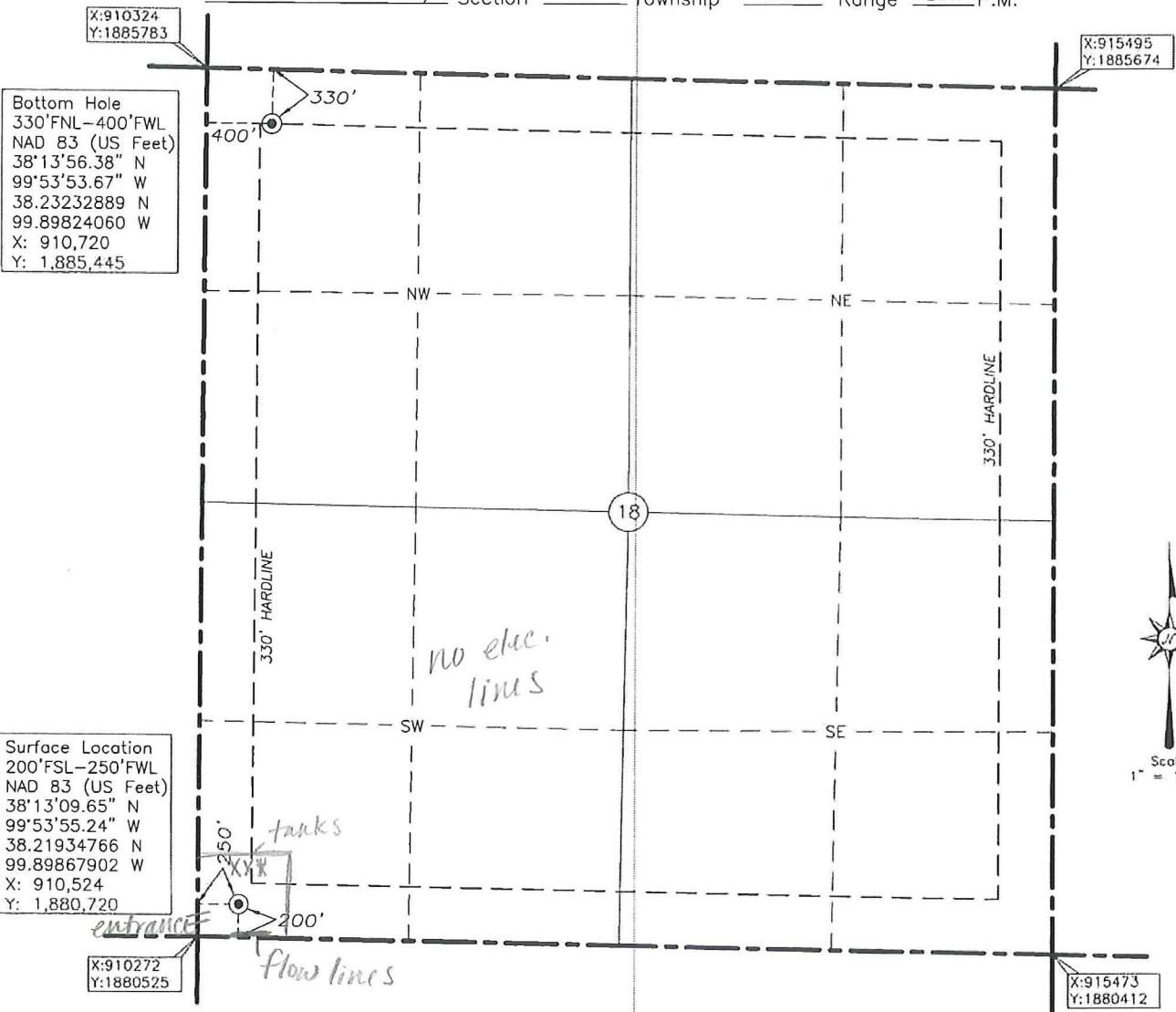


STANGER SURVEYING TYLER, LLC
 1595 E. GRANDE BLVD. TYLER TEXAS 75703 (903) 534-0174
 Certificate of Authorization No. LS-238, EXP. Dec. 31, 2013

HODGEMAN County, Kansas
 200'FSL-250'FWL-SW/4 Section 18 Township 21S Range 23W P.M.

NOTES: COORDINATES ARE BASED ON THE KANSAS STATE PLANE COORDINATE SYSTEM, NAD 83 DATUM (SOUTH ZONE) AS DERIVED FROM GPS OBSERVATIONS USING OPUS SOLUTIONS. DISTANCES TO BOTTOM HOLE LOCATION ARE CALCULATED FROM SURVEYED SECTION CORNERS



Bottom Hole
 330'FNL-400'FWL
 NAD 83 (US Feet)
 38°13'56.38" N
 99°53'53.67" W
 38.23232889 N
 99.89824060 W
 X: 910,720
 Y: 1,885,445

Surface Location
 200'FSL-250'FWL
 NAD 83 (US Feet)
 38°13'09.65" N
 99°53'55.24" W
 38.21934766 N
 99.89867902 W
 X: 910,524
 Y: 1,880,720

X:910324
 Y:1885783

X:915495
 Y:1885674

X:910272
 Y:1880525

X:915473
 Y:1880412

Operator: SANDRIDGE ENERGY, INC.
 Lease Name: STAIRRETT
 Topography & Vegetation: LOCATION FELL NEAR A DRAIN
 Well No.: 1-18H
 Elevation: 2351' Gr. at Stake

Good Drill Site? YES Reference Stakes or Alternate Location Stake Set: NONE
 Best Accessibility to Location From Gravel Road south of location
 Distance & Direction from Hwy Jct or Town From the Int. of U.S. Hwy. 283 & St. Hwy. 156, go 9.1 mi. north on U.S. Hwy. 283 to the Southwest Corner of Section 18, T21S-R23W.

SURFACE LOCATION
 DATUM: NAD-83
 LAT: 38°13'09.65" N
 LONG: 99°53'55.24" W
 LAT: 38.21934766 N
 LONG: 99.89867902 W
 STATE PLANE COORDINATES: (US Feet)
 ZONE: KANSAS SOUTH
 X: 910,524
 Y: 1,880,720

Date of Drawing: FEB. 29, 2012
 Job # T120117 Date Staked: FEB. 29, 2012

CERTIFICATE:
 I, J. MICHAEL RUSSELL a, Kansas Licensed Land Surveyor and an authorized agent of Stanger Surveying Tyler LLC, do hereby certify that the above described well location was surveyed and staked on the ground as shown hereon.
 Kansas Lic. No. 1554

