

GEOLOGIST'S REPORT
DRILLING TIME AND SAMPLE LOG

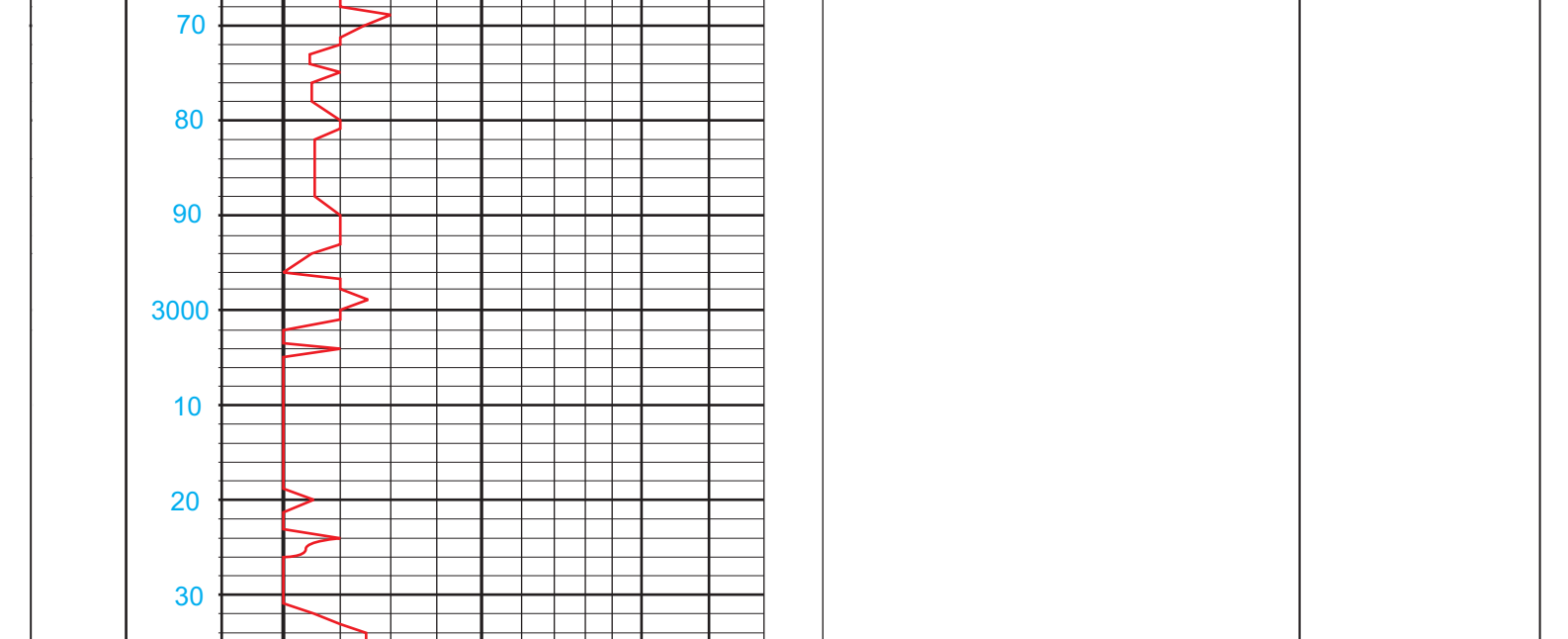
Geologist on Well: Beth Isern
 ELEVATIONS
 LEASE: Hansen #2
 FIELD: Lansford
 LOCATION: 330' FNL & 330' FEL
 SEC: 21 TWP: 25S R: 09W
 SFC: NSFO
 COUNTY: Kern STATE: Kansas
 CONTRACTOR: Duke Drilling Rig #2
 SPUD: 01/24/2012 COMP: 02/02/2012
 RTD: 4175 LTD: 4170
 MUD UP: 3200 TYPE MUD: CHEMICAL
 SAMPLES SAVED FROM: 3100 TO: TD
 DRILLING TIME KEPT FROM: 2900 TO: TD
 SAMPLES EXAMINED FROM: 3100 TO: TD
 GEOLOGICAL SUPERVISION FROM: 3400 TO: TD
 REFERENCE WELL: MCCN Petroleum Hansen #1
 Formation: Sample Tops E-log Tops
 Header: 3150 -1479 3146 -1475
 Brown Lime: 3329 -1658 3326 -1655
 Lansing: 3357 -1686 3354 -1683
 Stark Shale: 3618 -1947 3614 -1943
 Base KC: 3710 -2039 3705 -2034
 Mississipp: 3813 -2142 3810 -2139
 Kinderhook Sh: 3916 -2245 3913 -2242
 Viola: 4120 -2449 4114 -2443

CONDUCTOR: NA
 SURFACE: 8.96 @ 227 w/ 175K
 PRODUCTION: NONE
 ELECTRICAL SURVES: NONE
 Halliburton
 Note: Some Sample Log may Contain Non-Identified
 Core Material Log Array Core Non-Identified
 Diamond Testing
 Cored by: Chengdeyaka

REMARKS: It was decided to plug and abandon the Hansen #2 based on the thin upper porosity zone of the Mississipp and the negative results of the drill stem test of the Mississipp. No other zones warranted testing or had significant shows of oil.

Respectfully submitted,
 Beth A. Isern

LEGEND



SAMPLE DESCRIPTION

Daily Penetration
 01/24/2012: Move in, rig up
 01/25/2012: Spud @ 8:45am
 01/26/2012: Drig @ 895'
 01/27/2012: Drig @ 2195'
 01/28/2012: Drig @ 3112'
 01/30/2012: Drig @ 3800'
 01/31/2012: Drig @ 3920'
 02/1/2012: Logging @ 4175'; straddle test
 02/02/12: P&A

Crm, fxdn, sl foss ls w/ fr-gd ppt & interxn por, NSFO

Blk carb shale

Wh-lt tan ls, vfdn, sl foss w/ pr intxn por & foss-cast por, NSFO

Ls AA, w/ gy, sl limsey shale

Lt gy, sl calc shale, sl mica

Fw pcs dk tan, sl sndy ls to limsey siltstone, NS

Lt gy to lt tan, vfgmd, well-srtf ds, some pcs sl friable, sl mica to arg, NSFO, NSG

SS as above w/ pcs limsey sand, fgmd-ndgrmd, NS

SS w/ pcs lt gy, sl sandy to silty shale, mica, NS

Lt gy - tan, fgmd ss, mica, sl calc, NS

Mostly lt gy, fgmd ss to siltstone w/ few pcs tan, ds ls; NS

AA

Lt tan-gy, f-mgd ss, sl mica, NS

Gy, vfgmd ss to siltstone; gy soft shale; tr pcs lt tan, sl foss ls; NS

AA

Dk tan-bm, vxdn-microxin ls

Gy, sl waxy & soft shale

Mostly dk gy-gy sl silty shale, few pcs tan,fxn ls, tr foss w/ pr por, NS

Turt grn shale

Tan, prtly foss ls w/ some calc rexin, fxn matrix ds, w/ pr vis por; NSFO, no stn, no odor

Dk brn ls & sh, NS

Tan, v foss ls w/ fxn matr, no vis por; bm foss ls; pcs gy & gm sh

Few pcs ool ls & brn, foss ls w/ fxn matr, pr por, shales AA, NSFO

Bm & crm, v foss ls - tr crm sl chky ls, NSFO

vis 47 wt.9

Gy shale

Crm, fxdn & v foss ls w/ some calc repl; wh chky ls w/ pr vis por; NS

Few pcs gm shale & lt gy, silty sh w/ tan foss ls & ool ls - v pr vis por; NS, no stn no odor

Bm microxin ls w/ lt tan, foss ls - granular, no vis por

Blk shale

Gy gm rust shales

Shales AA, crm prtly foss ls, tr ppt por, gen pr por, sl cal repl, NS

Abdt shale

*samples carried abdt shale

Crm-lt tan, fxn ls, prtly foss, fry ds w/ no vis por, pcs rust sh - NS

Ls & shale AA - NS still abdt shales in smpls

Crm, prtly foss ls, pr vis por

Lt tan, microxin & biky ls, ds - NS

Bm, fxdn ls - abdt shale, tr br-opaq chert ns

AA abdt shale

Crm, sl chky ls w/ pr vis por, gy shale

Crm, prtly foss ls - sl chky to fxn, tr ppt por, pr vis por, NSFO, no stn, no odor

AA - still abdt shale

vis 46 wt 9.0 wl 12.0

Bm, microxin & biky ls, no por, ds w/ wh fxn & sl sour ls; NS

Tan, crm foss and sl ool ls w/ pr vis por, fxn matrix NSFO, no stn, no odor

smpls still carrying shale

Ls AA

Blk - dk gy shale

Crm, gran ls, prtly foss, tr pyr, NS

tan-brn fxn ls, some sl foss, pr vis por, gy-gn shale

vis 41 wt 9.3 lcm 1#

Tan-lt brn, microxin ls, bly, no vis por, tr ool ls NS, no odor

Blk carb shale

Crm-gy, gran & foss ls, sl ool w/ pr ooc por, sl chky, NS no stn, no odor

Bm, mdxn ls, biky & ds, crm-lt gy, fxn to sucr ls, no por, NS

pcs bk & rd sh

Tan-bm, partly foss ls, v pr vis por, NS

no odor, no stn

Blk carb shale,

Tan ls w/ lt gy sh, sl pyr

Tan-bm-gy ls, vfdn & sl foss ls, no vis por, ds, NSFO

Blk carb sh

x

Crm, fxdn ls, tr foss w/ calc repl, pr foss-cast por, NSFO, 2 pcs w/ unven stn, no odor

Tan-brn, microxin ls, ds w/ gy rust olive & gm shale

x

2 pcs wh, foss & chky ls w/ psfo & dk, uneven stn, no odor; much shale

Gy rust rd sh - washes rd

Crm, fxdn ls to brn, vfdn ls, ds NS

Mostly lt gy, sl silty sh w/ rd & tr ylw shale

Crm-tan, fxn and sl ool ls w/ tr dk sptd stn, v pr vis por, 1 pc w/ VSSFO, no odor,

Dk gy rust shales w/ few pcs ool, fxn matr, ds; NS

Lt tan-rd, vfdn & mottled ls, prtly foss, ds; dr tan-bm vfdn & prtly foss ls w/ cal rexin; NS

Dk olive gm & rst shales, sl silty & mica

Crm-wh, sl chky ls, pr vis por

vis 48 wt 9.3 wl 11.0

Ls AA w/ var colors shale - gy, gm, rd, rust, sl pyr

Crm-tan ls - adkt shales

Abdt gy shale w/ lt gy siltstone & lt gr slt stone

Dk gy-bik splinty sh - sl pyr & mica, sl carb; Rust shales

Purple sandy sh w/ purple ls; gy silty sh; few pcs org & ylw cht; pcs tan sl chky ls & chky ls; NS

for core @3825

CORE DESCRIPTIONS

3825-3841 Dk gy - lt gy shale

3842-3846 White fresh and weathered chert, somewhat fractured; intermittent stain thruout; much apps barren

3846-3850 White fresh and weathered chert - bleeding oil from 3848 - 3850 in fracture; much appears barren

3850-3853 white chert and chert nodules, breccia; all broken up. no show oil on outside of core.

no core sample from 3853-3871

3871-3879 white chert, appears fractured with slight bleeding oil @ 3875; no apparent show oil from 3879

vis 44 wt 9.1 wl 13.6 chl 4,800 lcm 1#

Wh to ylw frsh cht w/ wh, trip cht and withrd, no apparent show oil, stn, odor; brecciated

3910-3914 white chert and white,fxn & dense limestone

3914-3920 green shale

vis 40 wt 8.9 wl 10.0 chl 8,000 lcm 1#

Gr-gy shale

Gm-gy, sl waxy sh w/ gm, gran ls, ds NS

Shales AA

Shales AA

Mostly gy sh w/ lt gy biky sh

Md gy, sl mica shale

vis 45 wt 9.1 lcm 1.5#

Gy, m, sl waxy shale

AA

Gy-brn shale, some w/ foss molds & sl pyr

AA w/ tr brn vfdn & ds ls

Shales AA w/ incr in cht - some loose qtz grms

vis 50 wt 9.1 wl 8.0

Bm, fxn ls, biky & ds, no vis por

Few pcs cht w/ ls AA & gy-brn shale; NS

Ch-tan, fgmd to med gm ss, well srtf w/ fr vis por, NS, no stn, no odor

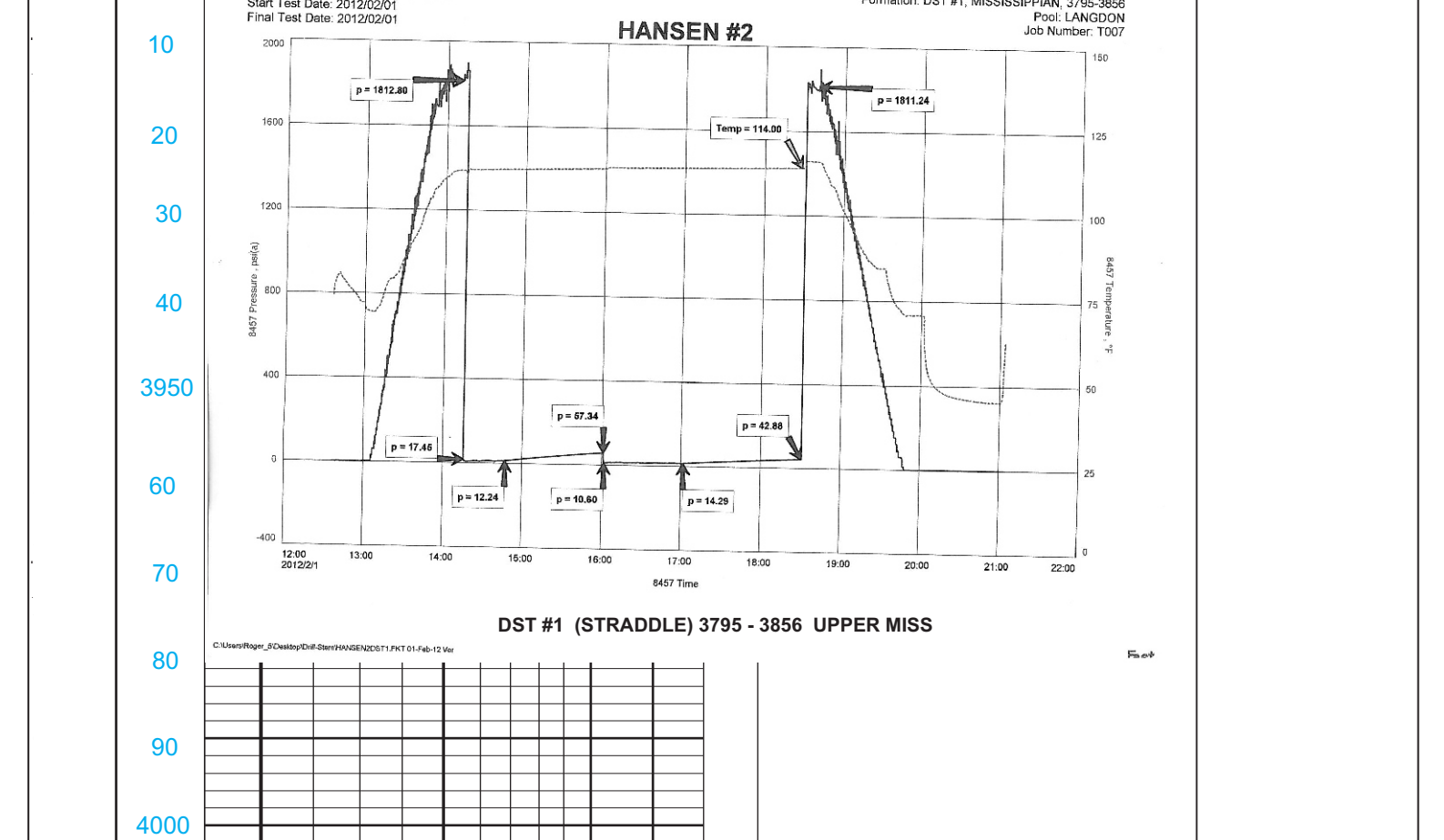
Tan-brn, fxn & gran dol, pr to fr vis interxn por, NSFO, no stn, white-lt gy, biky cht w/ incl

Tan, fxdn dol w/ fr vis interxn por and wh-gy biky fr cht AA; NSFO, no stn, no odor

Tan-brn, fxn and fry ds dol w/ poor vis por, pcs wh-gy-ops biky cht w/ min incl, NSFO no stn no odor

Tan, vfdn dol w/ pr vis por; cht AA, NS no stn no odor

Dol & cht AA; NS, no stn, no dor



TRANS PACIFIC CORPORATION
 2021 #1 MISSISSIPPIAN, 2795-3856
 Start Test Date: 2012/02/01
 First Test Date: 2012/02/01

HANSEN #2
 Formation DET #1: MESSISSIPPIAN, 2795-3856
 POOL: LANGDON
 Job Number: 1007

DET #1 (STRADDLE) 3795 - 3856 UPPER MISS