

LITHOLOGY STRIP LOG

WellSight Systems

Scale 1:240 (5"=100') Imperial

Well Name: Rosenberger #1-8
Location: 392' FNL & 538' FEL, Sec. 8-T28S-R18W, Kiowa County, KS.
Licence Number: 15-097-21709-0000 Region: Einsel Field
Spud Date: 1/11/2012 Drilling Completed: 1/21/2012
Surface Coordinates: 392' FNL & 538' FEL, Sec. 8-T28S-R18W

Bottom Hole Same as above
Coordinates:
Ground Elevation (ft): 2239' K.B. Elevation (ft): 2250'
Logged Interval (ft): 3400' To: 4925' Total Depth (ft): 4925'
Formation: Kinderhook at Total Depth
Type of Drilling Fluid: Freshwater/Gel to 3220'; Chemical Gel 3220' to 4925'

Printed by MUD.LOG from WellSight Systems 1-800-447-1534 www.WellSight.com

OPERATOR

Company: Strata Exploration, Inc.
Address: P.O. Box 401
Fairfield, IL. 62837-0401

GEOLOGIST

Name: Jon D. Christensen
Company: Consulting Petroleum Geologist
Address: 9002 W. Silver Hollow St.
Wichita, KS. 67205-8856

Cores

None Taken

DSTs

DST #1(Lansing 'A') 4260' - 4276' Test Times 15"-45"-30"-60" IFP Weak 0.5" Blow, FFP Weak 0.75" Blow, no Blowback on SI's; REC: Trc. Gas in Pipe, 60' SOSpkdW(1%O, 99% SW) CI 120,000, Mud 5800; IFP 15-28#, ISIP 1430#, FFP 30-44#, FSIP 1415#, IHP 2186#, FHP 2193#, BHT 109 Deg. F.

DST #2(Pawnee) 4736' - 4762' Test Times 15"-45"-30"-60" IFP Weak 1/8" Blow, FFP Weak Surface Blow, no Blowback on SI's; REC: 5' Drilling Mud, no shows; IFP 17-19#, ISIP 37#, FFP 19-21#, FSIP 30#, IHP 2438#, FHP 2361#, BHT 116 Deg. F.

DST #3(Mississippi Chert) 4812' - 4880' Test Times 15"-45"-30"-60" IFP Weak Surface Blow 1/8", FFP No Blow, no Blowback on SI's; REC: 2' Drlg. Mud, no shows; IFP 21-30#, ISIP 74#, FFP 23-24#, FSIP 48#, IHP 2431#, FHP 2363#, BHT 113 Deg. F.

Comments

1/10/12 MIRU Sterling Drilling Co. Rig #2; 1/11/12 Spud at 5:45 AM.; 1/12/12 TD. 572' - WOC; 1/13/12 Drilling at 1220'; 1/14/12 TD. 2754' - TOH f/repairs; 1/15/12 Drilling at 3320'; 1/16/12 Drilling at 3905'; 1/17/12 TD. 4276' - TOH for DST #1; 1/18/12 Drilling at 4464'; 1/19/12 TD. 4762' - CFS for DST #2; 1/20/12 Drilling at 4814'; 1/21/12 RTD. 4925' - CCH for Logs(RTD. at 5:30 AM)

Set new 8 5/8"(24#) Surface Casing at 570' w/ 350 sx. Cement did Circulate(Basic Energy Services). PD. 2:45 AM. 1/12/12.

Surveys: Misfire at 572'(Surface Casing); 0.75 Deg. at 4276'(DST #1); 0.75 Deg. at 4762'(DST #2); Deg. at 4925' RTD.

Pipe Strap at 4762'(DST #2): Strap 3.49' Short to the Board, no correction made to the Board.

ROCK TYPES

	Anhy		Clyst		Gyp		Mrlst		Shgy
	Bent		Coal		Igne		Salt		Sltst
	Brec		Congl		Lmst		Shale		Ss
	Cht		Dol		Meta		Shcol		Till

ACCESSORIES

MINERAL		FOSSIL		
	Anhy		Algae	
	Arggrn		Amph	
	Arg		Belm	
	Bent		Bioclst	
	Bit		Brach	
	Brecfrag		Bryozoa	
	Calc		Cephal	
	Carb		Coral	
	Chtdk		Crin	
	Chtlt		Echin	
	Dol		Fish	
	Feldspar		Foram	
	Ferrpel		Fossil	
	Ferr		Gastro	
	Glau		Oolite	
		Gyp		Ostra
		Hvymin		Pelec
		Kaol		Pellet
		Marl		Pisolite
		Minxl		Plant
		Nodule		Strom
		Phos		
		Pyr	STRINGER	
		Salt		Anhy
		Sandy		Arg
		Silt		Bent
		Sil		Coal
		Sulphur		Dol
		Tuff		Gyp
				Ls
				Mrst
				Sltstrg
				Ssstrg
			TEXTURE	
				Boundst
				Chalky
				Cryxln
				Earthy
				Finexln
				Grainst
				Lithogr
				Microxln
				Mudst
				Packst
				Wackest

OTHER SYMBOLS

POROSITY		ROUNDING		
	Earthy		Rounded	
	Fenest		Subrnd	
	Fracture		Subang	
	Inter		Angular	
	Moldic			
	Organic	OIL SHOW		
	Pinpoint		Even	
		Vuggy		Spotted
	SORTING			Ques
		Well		Dead
		Moderate		
		Poor	INTERVAL	
				Core
				Dst
			EVENT	
				Rft
				Sidewall

Curve Track 1

ROP (min/ft) ———
 Gamma (API) - - - - -

TG, C1-C5
 TG (Units) ———
 C1 (units) - - - - -
 C2 (units)
 C3 (units)
 C4 (units)
 C5 (units)

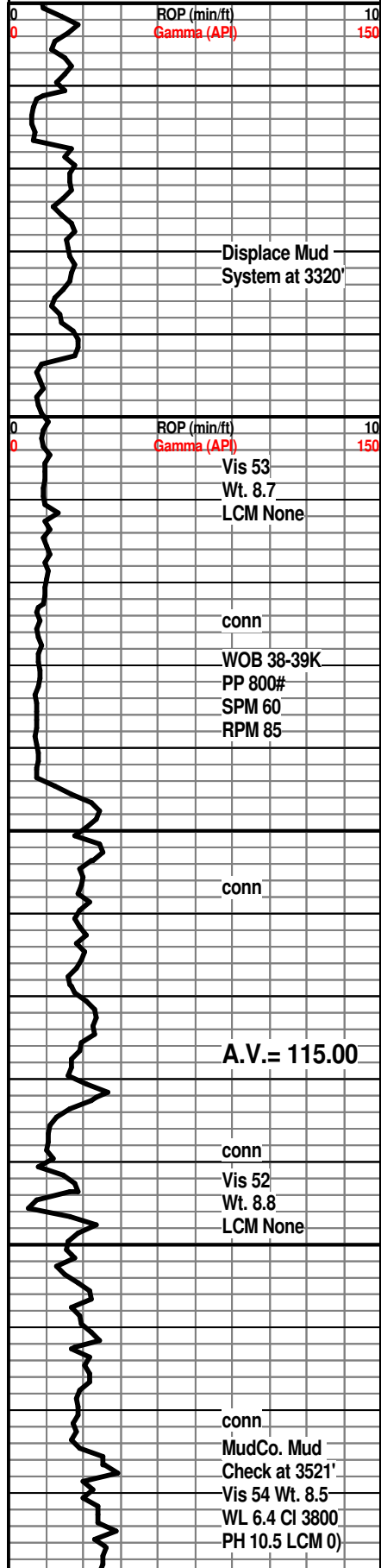
Depth

Porosity Type

Lithology

Oil Shows

Geological Descriptions



33
10
150
3400
10
150
3450
3500
3520



STRATA EXPLORATION, INC.

ROSENBERGER #1-8

GEOLOGICAL REPORT

KB. 2250'

SH; It to med gy, silty ip, platy, occ dissem. pyr

SH; It to med gy, mica - silty ip, firm, platy

STOTLER LMST. 3446(-1196)

LM; med brn, hd, foss ip, blocky, tite

LM; tan to lt brn, v. foss ip, scat pellets & fus, occ lt yel min fluor, no stn or gas kick, ns.

LM; tan to cream, lt brn, scat cse foss frags, some lrg. fus, fair interpart por ip, lt yel min fluor only, no stn, ns.

SH; It gy, grn, platy, soft

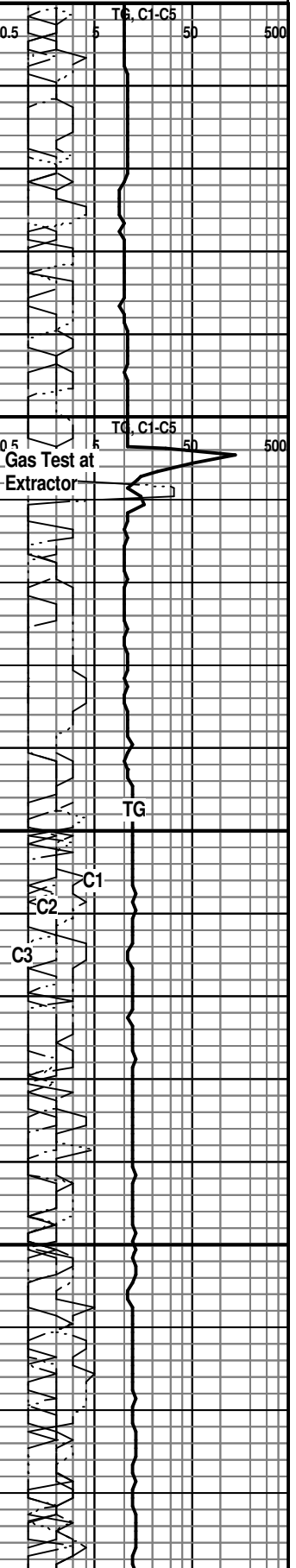
LM; med brn, dense, micritic, blocky

LM; tan to lt brn, foss, scat foss hash, poor to fair interpart por, minor soft chalky mtx, ns.

LM; It to med brn, occ gy brn, foss ip, most well cem, blocky, no vis por, no stn, ns.

LM; off wh, tan, fxln, occ soft chalky mtx, poor interxln por, dull yel min fluor, ns.

LM; med brn, occ dk brn, hd, blocky, most micritic, tite, rare cse spar calc xtals, no fluor, no stn or odor, ns.



0.5
5
50
500
TG, C1-C5

0.5
5
50
500
TG, C1-C5

Gas Test at Extractor

TG

C1

C2

C3

WOB 38-40K
PP 800#
SPM 60
RPM 75

conn

conn

WOB 38-40K
PP 850#
SPM 60
RPM 75

ROP (min/ft)
Gamma (AP)

conn

Vis 54
Wt. 9.0+
LCM 0#

conn

CFS. at 3664'

conn

Vis 52
Wt. 9.0
LCM 0#

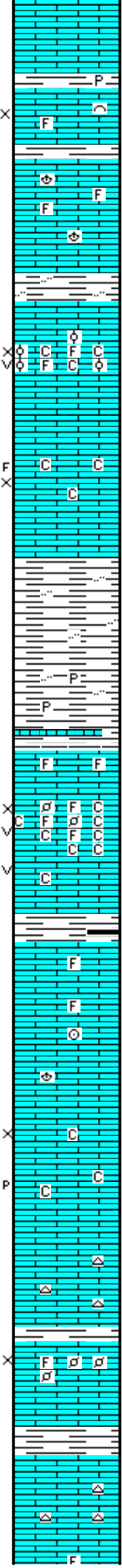
conn

WOB 38-40K
PP 925#
SPM 60
RPM 75

conn

Vis 52

3550
3600
3650
3700
3750



SH; med gy grn, platy, occ pyr

LM; lt gy brn, fxln, fair interxln por, scat foss mat, lt yel min fluor, no stn, no gas kick, ns.

LM; lt gy to gy brn, most dense, micritic, hd, no vis por, scat well cem foss mat, dull yel min fluor, no stn or odor, ns.

SH; med gy, grn, platy, occ silty

PULL 30 STANDS AT 3585' - Work on Mud Pump
LM; tan to off wh, buff, med to cse xln, foss - partly oolitic, minor chalky mtz, fair/gd interpart por, scat vug por, lt yel min fluor, no stn, no gas kick, ns.

LM; off wh, tan, med xln, scat fair interxln por, soft chalky mtz, trc fracs w/edge calc xtals, dull yel min fluor, no stn, no gas kick, ns.

SH; lt to med gy, firm, occ silty

SH; med gy, firm, fiss to flakey, occ pyr

HOWARD 3645(-1395)

LM; med to dk gy, foss, dense, tite

LM; off wh, wh, fxln to occ gran text, fair to gd interxln w/occ vug por, some finely pelletal lmst, much soft chalky mtz, lt yel fluor, quest. gas bubbles, no odor, no stn - very weak/no show

SH; med to dk gy, trc blk, platy, smooth

LM; lt to med brn, most dense, micritic, scat well cem foss, no fluor, ns.

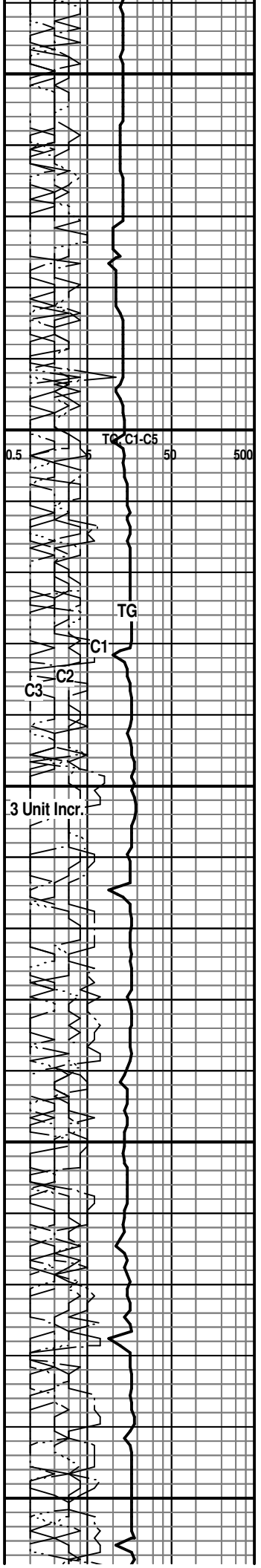
LM; tan to cream, buff, f to med xln, fair interxln por, rare p-p por, minor soft chalky mtz, dull to lt yel min fluor, no stn, no gas kick, ns.

LM; med brn, rare gy brn, most dense, scat gy foss cht, hd, ns.

LM; tan to off wh, buff, foss to finely pelletal ip, scat chalky soft mtz, fair interpart por, no fluor, no stn or odor, ns.

SH; med to dk gy, fiss
TOPEKA 3744(-1494)

LM; lt to med brn, most dense, blocky, foss ip, well cem, occ gy cht, no vis por, ns.



Wt. 9.1
LCM 0#

conn

ROP (min/ft)
Gamma (API)

conn
Vis 54
Wt. 9.1
LCM 0#

A.V.= 114.50

conn

WOB 38-40K
PP 925#
SPM 60
RPM 75

conn

conn

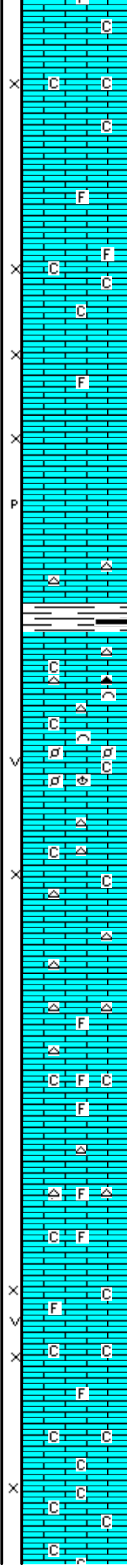
Vis 57
Wt. 9.3
LCM 0#

conn

conn

WOB 39-40K
PP 925#
SPM 60

3800
3850
3900
3950



LM; tan to buff, lt brn, fxln, fair to gd interxln por, minor soft chalky mtx, dull yel no fluor, no stn, no gas kick, ns.

LM; tan to buff, lt brn, fxln, fair interxln por, some chalky soft mtx, minor foss mat, dull yel min fluor, no stn, ns.

LM; tan to lt brn, f to rarely med xln, fair to gd interxln por w/scat p-p por, trc sucrosic text, dull yel min fluor, no stn or odor, ns.

LM; med brn, hd, scat gy/off wh cht, tite

SH; dk gy, trc blk, platy, firm

LM; tan to lt brn, f to med xln, cherty ip, fair vis interxln w/occ small vug por, minor soft chalky mtx, dull to occ lt yel min fluor, no stn or odor, ns.

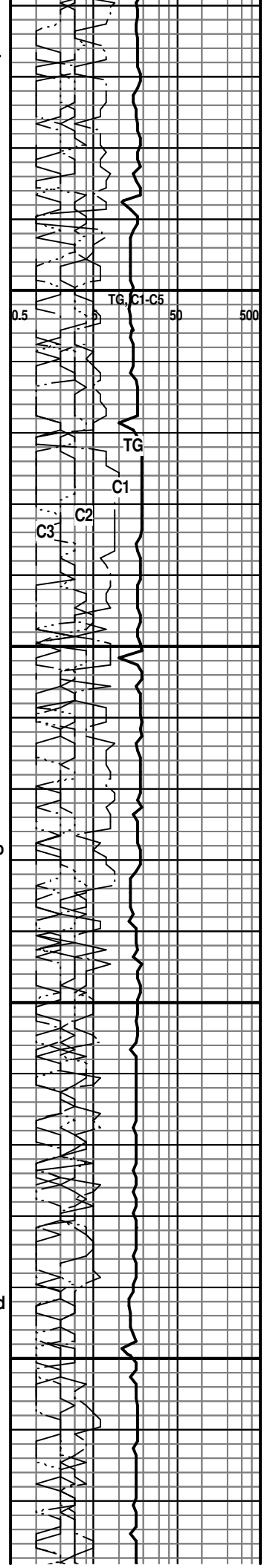
LM; tan to off wh, buff, f to med xln, cherty w/abnt wh to off wh cht, fair interxln por, occ soft chalky mtx, no fluor, no stn or odor, ns.

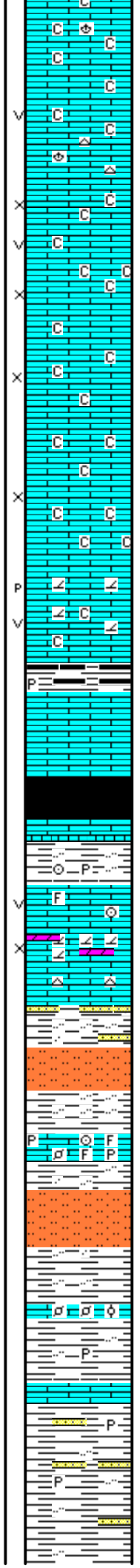
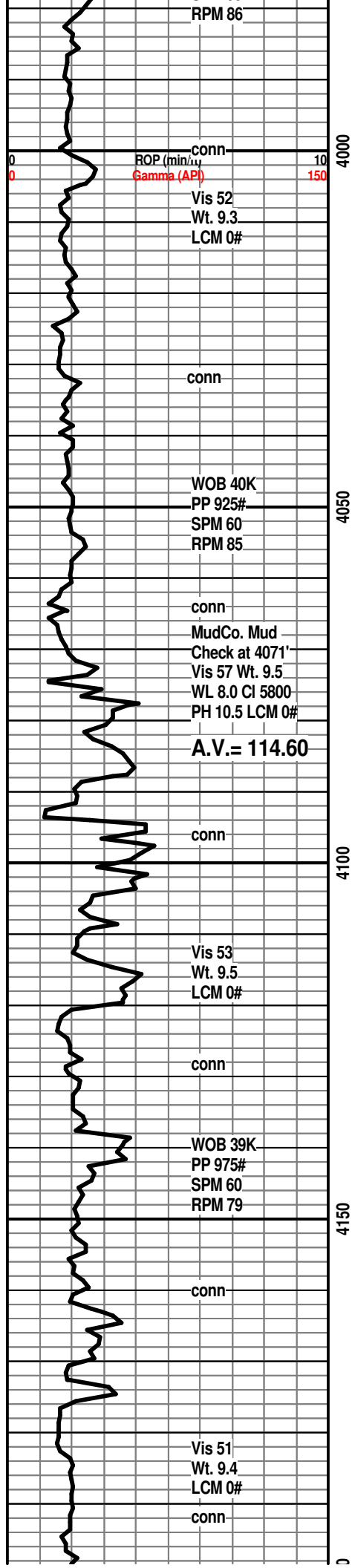
LM; tan to lt brn, foss ip, cherty, no vis por, occ soft chalky mtx, no stn or odor, ns.

LM; tan to lt brn, most dense - micritic, blocky, scat off wh/gy cht, tite

LM; tan to lt brn, buff, med xln w/occ foss mat, fair to gd interxln por, occ cse spar calc xtals, occ p-p por also, dull yel min fluor, no stn or odor, ns.

LM; tan to cream, off wh, f to med xln, fair interxln por ip, abnt soft chalk and chalky mtx, rare foss mat, dull yel min fluor, ns.





LM; tan to off wh, f to med xln, scat small vug por, much soft chalky mtx, dull yel min fluor, no stn or odor, ns.

LM; tan to buff, lt brn, med to occ cse xln, scat cse spar calc xtals, fair to gd interxln w/rare vug por, much soft chalky mtx, dull yel min fluor, ns.

LM; tan to buff, cream, f to med xln, scat foss mat, much soft chalky mtx, fair interxln por, lt yel min fluor only, no stn or odor, ns.

LM; tan to lt brn, buff, fxln to occ sucrosic text, dolomitic ip, scat fair p-p and occ vug por, minor chalky mtx, lt yel fluor, no stn or odor, ns.

SH; dk gy, blk, platy, occ pyr

LM; tan to lt brn, fxln w/some sucrosic text, foss ip, most well cem, dull to lt yel fluor, no stn or odor, no gas kick, ns.

HEEBNER SHALE 4088(-1838)

SH; blk, platy, carb ip, trc gas
LM; med to dk brn, hd, micritic

SH; grn, silty ip, occ pyr, firm

TORONTO 4103(-1853)

LM; off wh, tan, lt gy, foss ip, scat fair vug por, interbdd sucrosic dolomitic lmst, lt yel min fluor, no stn or odor, ns.

DOUGLAS SHALE 4120(-1870)

SH; lt to med gy, rarely gy grn, fiss, silty ip w/interbdd sltst, occ vf gr qtz ss, mica

LM; med brn to dk gy, highly foss, hd, occ pyr, ns.

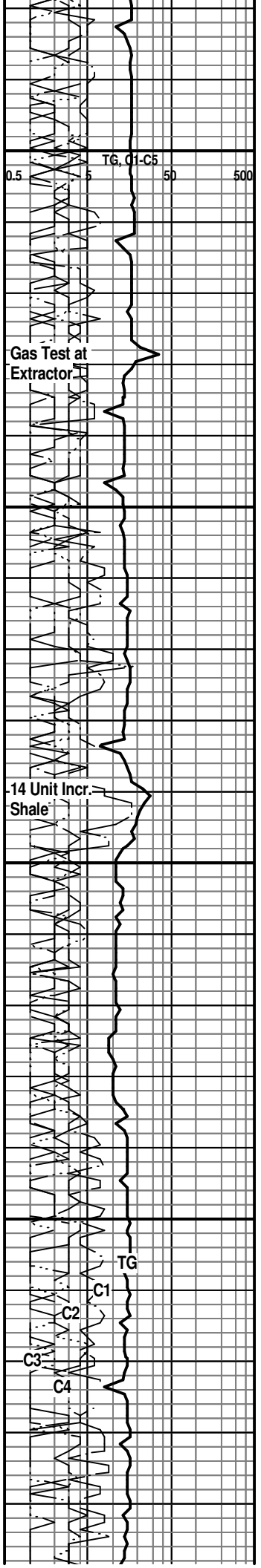
SH; lt gy, grn, platy, silty to sandy, firm, interbdd lt gy sltst.

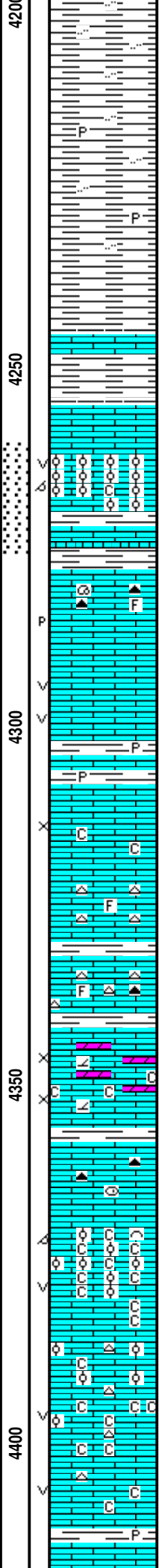
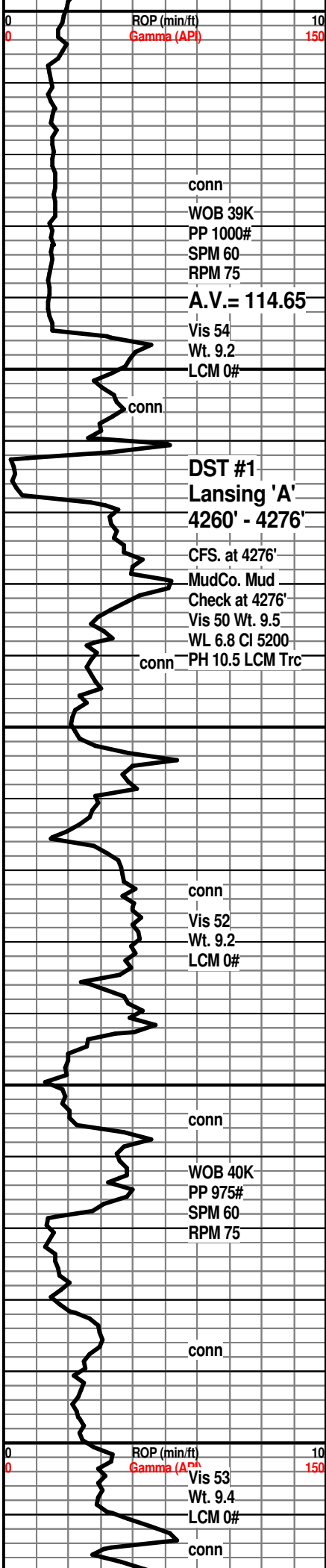
SH; med gy, gy grn, silty ip, firm

LM; med gy, hd, foss - pelletal ip, tite

LM; med brn, foss, well cem, blocky, tite

SH; med gy, gy grn, silty ip w/occ interbdd vf gr qtz ss, pyr ip.





SH; lt to med gy, platy, occ silty, smooth

SH; lt to med gy, firm, platy, pyr ip.

BROWN LMST. 4245(-1995)
LM; med to dk brn, dense, micritic, tite

LANSING 'A' 4255(-2005)
LM; tan to lt brn, oolitic, med to lrg molds, v. gd oomoldic por, scat gd vug por, brittle, med to brite yel fluor, fair odor, spotted lt brn oil stn, VSSFO - few pcs w/gassy FO, fair cut, some barren por, occ soft chalk

DST #1: Lansing 'A': 4260' - 4276'
LANSING 'B' 4278(-2028)
LM; tan to lt gy, foss ip, most well cem, scat poor p-p por, occ smoky cht, no fluor, no stn or odor, ns.

LM; tan to lt gy, med xln, scat cse spar calc xtals, fairly well dev. vug por w/sec calc overgrowths, no fluor, no stn/odor, ns.

SH; med gy, firm, occ pyr

LM; lt brn, tan, mottled ip, fxln w/occ foss mat, poor interxln por, trc sucrosic text, dull yel min fluor only, minor chalky mtx, ns.

LM; lt to med brn, most dense, scat foss off wh cht, tite

LM; tan to lt brn, foss ip, hd, cherty, no vis por, no fluor, ns.

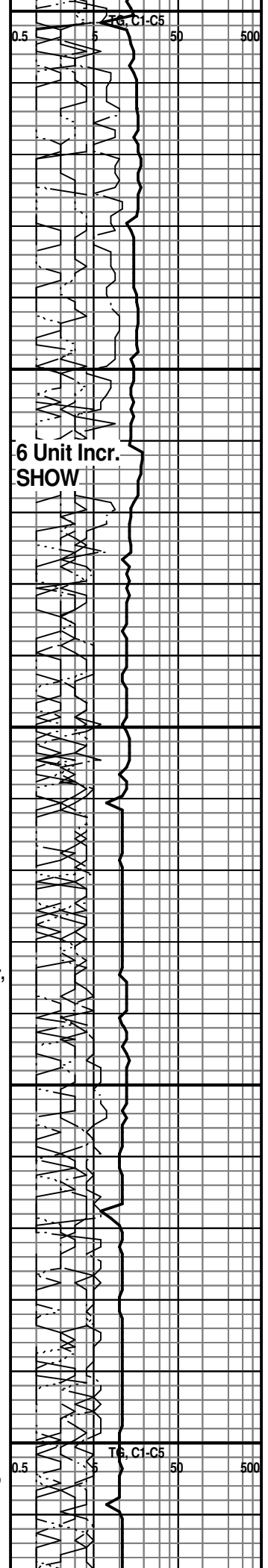
LM; off wh, wh, buff, fxln, sucrosic text, dolomitic ip, fair interxln por, scat soft chalk and chalky mtx, lt yel min fluor, no stn, no gas kick, barren, ns.

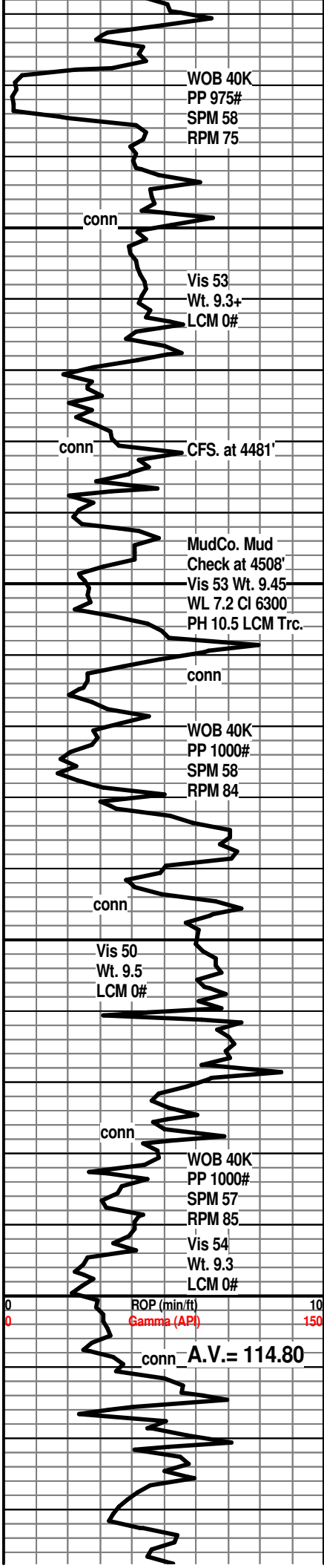
LM; lt to med brn, hd, micritic, occ smoky/brn chert, no vis por, ns.

LM; off wh, wh, most oolitic w/some med xln, foss ip, fair to gd oomoldic w/minor small vug por, much soft chalky mtx, no fluor, no stn, ns.

LM; off wh, tan, foss, well cem oolites and foss mat, chalky - soft, most tite, some oolitic cht, no fluor, ns.

LM; off wh, tan to buff, foss ip, scat poor small vug por, chalky ip, ns.





WOB 40K
PP 975#
SPM 58
RPM 75

conn

Vis 53
Wt. 9.3+
LCM 0#

conn

CFS. at 4481'

MudCo. Mud
Check at 4508'
Vis 53 Wt. 9.45
WL 7.2 Cl 6300
PH 10.5 LCM Trc.

conn

WOB 40K
PP 1000#
SPM 58
RPM 84

conn

Vis 50
Wt. 9.5
LCM 0#

conn

WOB 40K
PP 1000#
SPM 57
RPM 85

Vis 54
Wt. 9.3
LCM 0#

ROP (min/ft)
Gamma (API)

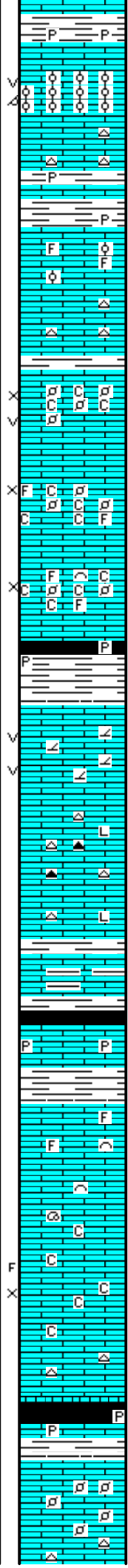
conn A.V. = 114.80

4450

4500

4550

4600



SH; dk gy, pyr ip, platy
LANSING/K.C. 'H' 4424(-2174)

LM; lt brn, tan, oolitic, most med size molds, v. gd oomoldic w/occ small vug por, brittle ip, dull yel fluor, no stn/odor, no sample shows

LM; tan to lt brn, buff, most dense, scat cht, tite

SH; med gy, firm, pyr ip.

LM; tan to lt brn, hd, blocky, scat well cem foss - oolitic mat, no vis por, no fluor, ns.

LM; tan to buff, lt brn, most dense, scat gy to tan cht, no fluor, no stn or odor, ns.

K.C. 'I' 4470(-2220)

LM; off wh, foss - finely pelletal, rare small oolites, soft chalky mtx ip, fair interpart w/rare vug por, lt yel fluor, no stn/odor, no gas kick, ns.

LM; tan to off wh, foss, finely pelletal, poor to fair interpart por, scat soft chalky mtx, dull yel fluor, no stn or odor, no gas kick, ns.

LM; tan to off wh, foss ip, some med xln w/cse spar calc stals, fair interpart/interxln por, soft chalky mtx ip, no fluor, ns.

SH; dk gy to blk, platy, occ pyr

K.C. 'J' DENNIS 4517(-2267)

LM; tan to buff, fxl, sucrosic text, partly dolomitic, scat vug por, lt yel min fluor only, no stn or odor, ns.

LM; tan to buff, lt brn, most dense - litho, hd, blocky, scat tan to amber cht, tite

SH; med gy, grn, platy

LM; lt gy brn, argil, hd, tite

STARK SHALE 4560(-2310)

SH; blk, carb, platy

LM; med gy, hd, pyr, tite

SWOPE 4573(-2323)

LM; lt gy, tan, foss ip, most well cem, blocky, no vis por, no fluor, ns.

LM; tan to off wh, cream, f to med xln, some gran, scat fair to gd interxln por, trc frags, 1 pc. w/lt brn oil stn, chalky ip, most barren por, dull yel fluor, no odor, no gas kick

LM; med brn, hd, scat off wh to gy cht, tite

SH; blk, carb ip, occ pyr, trc gas, blocky

LM; dk brn, hd, pyr ip, tite

HERTHA 4623(-2373)

LM; tan to buff, lt brn, foss ip, finely pelletal, most well cem, lt yel fluor, poor/no vis interpart por, no stn or odor, ns.

4 Unit Incr.

TG

C1

C3

C4

Gas Test at
Extractor

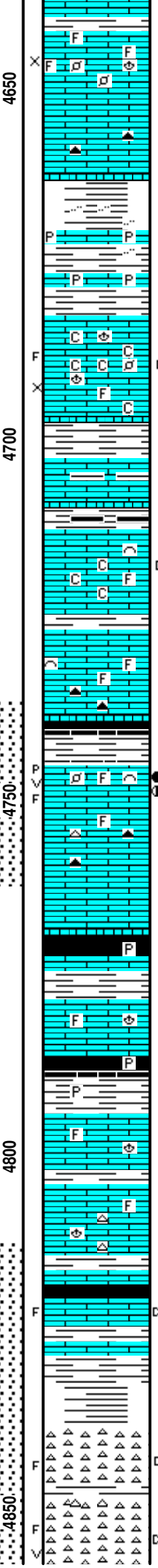
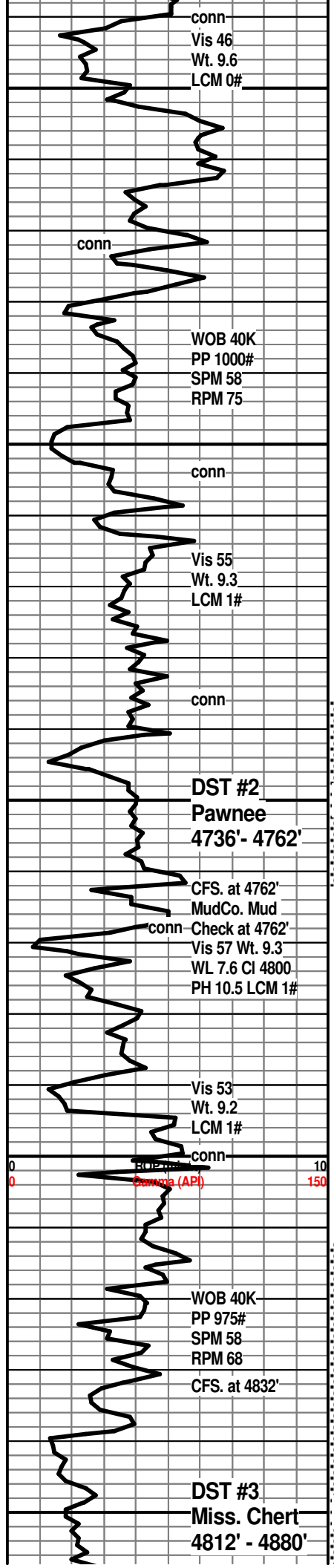
3 Unit Incr.
Shale

Change Extractor
Filter/Clean out

Gas Test at
Extractor -
Propane

0.5 TG C1-C5 50 500

11 Unit Incr.
Shale



SH; med gy, grn, fiss to flakey
 LM; med brn, cse xln, scat foss mat, fair interxln por, occ spar calc xtals, dull yel min fluor, no stn or odor, ns.

LM; med to dk brn, hd, micritic - litho, cherty

BASE KANSAS CITY 4663(-2413)
 SH; varic, grn, gy, rust red, platy, silty ip.
 LM; dk gy, foss ip, hd, blocky, scat pyr

PLEASANTON 4682(-2432)
 LM; wh to off wh, fxln, foss w/scat soft chalky mtz, some fair interpart por, trc blk dead oil stn, trc frags, dull to lt yel fluor, no odor, weak to no cut, v. poor show

SH; grn, gy grn, fiss
MARMATON 4703(-2453)
 LM; lt brn, tan, pale grn tint, argil ip, hd.
 SH; dk gy, blk, platy
 LM; tan to lt brn, most dense, micritic, blocky, interbdd fxln partly chalky lmst w/blk tar/gils/dead oil, dull yel fluor, no live shows, looks tite

LM; tan to lt brn, fxln, scat foss mat, most well cem, hd, no vis por, scat tan to amber cht, no fluor, ns.

PAWNEE 4745(-2495)
 LM; lt brn, gran/cse xln, foss ip, fair to gd p-p w/vug por, gd odor, frags ip, med to brite yel fluor, gas bubbles, SFO, spotted to even med brn oil stn, fair to gd cut
 LM; lt brn, hd, most micritic, scat tan/amber cht

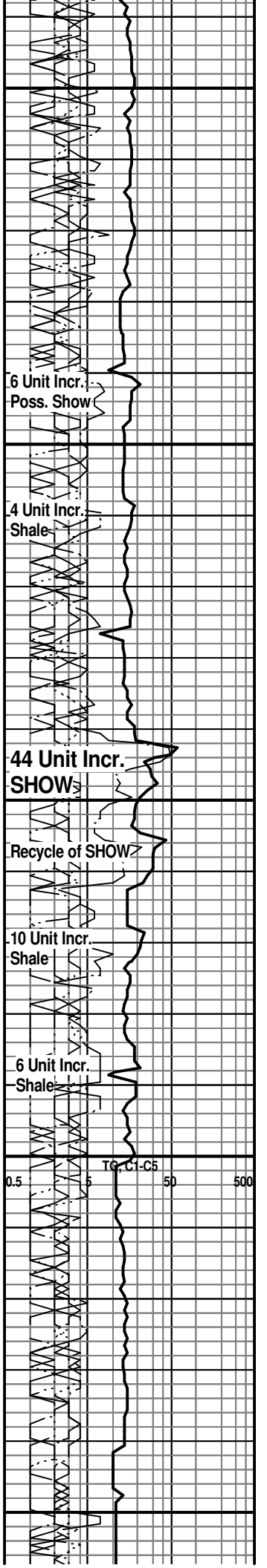
DST #2(Pawnee) 4736' - 4762'
 SH; blk, carb ip, platy, trc pyr, blocky
 SH; med gy, grn, fiss
 LM; tan to lt brn, foss ip, dense to micritic, lt yel min fluor, no stn, no gas kick, ns.

CHEROKEE SHALE 4786(-2536)
 SH; varic: blk, grn, gy, maroon. some v. soft, pyr ip.
 LM; med/dk brn, hd, scat well cem foss mat, blocky, no vis por, ns.
 LM; tan to lt brn, rare well cem foss, most dense, occ tan/lt brn cht, no vis por, no fluor, ns.

SH; blk, platy, thinly bdd
 LM; off wh, tan, fxln, scat frags, sev. pcs w/blk tar/gils/dead oil, trc tar on frac faces, dull yel fluor, no odor, no gas kick

SH; varic: rust red, grn, maroon, platy

MISSISSIPPI CHERT 4838(-2588)
 CHT; yel, org, wh, most fresh, few frags, scat oolitic cht, trc dk brn/blk residual oil stn, dull to lt yel fluor, no odor, no gas kick
 CHT; varic, wh, yel, org, most fresh, frags, rare vug por, trc dk brn/blk dead oil stn, dull yel fluor, no odor, no gas kick, interbdd rust red shale and reworked chert



CFS. at 4864'

Vis 60
Wt. 9.2
LCM 1#

CFS. at 4880'
MudCo. Mud
Check at 4880
Vis 66 Wt. 9.15
WL 6.8 Cl 4200
PH 11.0 LCM 2#

conn

WOB 40K
PP 975#
SPM 58
RPM 75

Vis 57
Wt. 9.2
LCM 1#
CFS. at 4925' RTD

4900

4950

00

sections
CHT and SH; yel, wh, org, fresh cht, grn and red sh, no fluor, ns, trc wh/rose red med xln lmst.

KINDERHOOK SHALE 4868(-2618)

SH; med gy, some sea grn, sandy ip, platy

DST #3: Miss. Chert 4812' - 4880'

SH; med gy grn, silty to sandy, firm, platy, interbdd grn vf to fgr qtz ss strngs.

KINDERHOOK SAND 4888(-2638)

SS; wh, lt gy, occ pale grn tint, most f gr qtz, well srt, clusters, fair to gd intergran por, some argil, trc salt & pepper ss, subrnd/subang gr, no fluor, no stn or odor, barren, no gas kick

SS; clr, lt gy, off wh, f gr qtz, clusters, argil ip, fair to gd intergran por, no fluor, no gas kick, ns.

SS; wh, lt gy, occ clr, all f gr qtz, well srt, clean, fri clusters, gd intergran por, interbdd hd qtzitic to argil ss, no fluor, no stn or odor, barren, ns.

2 Unit Incr.

RTD. 4925' at 5:30 AM. 1/21/12

LTD.

Halliburton DIL, NEU/DEN, Microlog,
MIRL