



**TRILOBITE TESTING, INC.**

# DRILL STEM TEST REPORT

Murfin Drilling Co.

**11 2 24w Norton Ks**

250 N. Water  
STE.300 Wichita Ks.  
67202

**Schulze #1-11**

Job Ticket: 042974

**DST#: 1**

ATTN: Robert Hendrix

Test Start: 2012.01.26 @ 23:45:00

## GENERAL INFORMATION:

Formation: **LKC-B**

Deviated: No Whipstock: ft (KB)

Time Tool Opened: 01:27:30

Time Test Ended: 06:17:00

Test Type: Conventional Bottom Hole (Initial)

Tester: Chuck Kreuzer Jr

Unit No: 36

**Interval: 3511.00 ft (KB) To 3540.00 ft (KB) (TVD)**

Reference Elevations: 2520.00 ft (KB)

Total Depth: 3540.00 ft (KB) (TVD)

2510.00 ft (CF)

Hole Diameter: 7.80 inches Hole Condition: Good

KB to GR/CF: 10.00 ft

**Serial #: 6752 Inside**

Press @ Run Depth: 17.17 psig @ 3512.00 ft (KB)

Capacity: 8000.00 psig

Start Date: 2012.01.26 End Date: 2012.01.27

Last Calib.: 2012.01.26

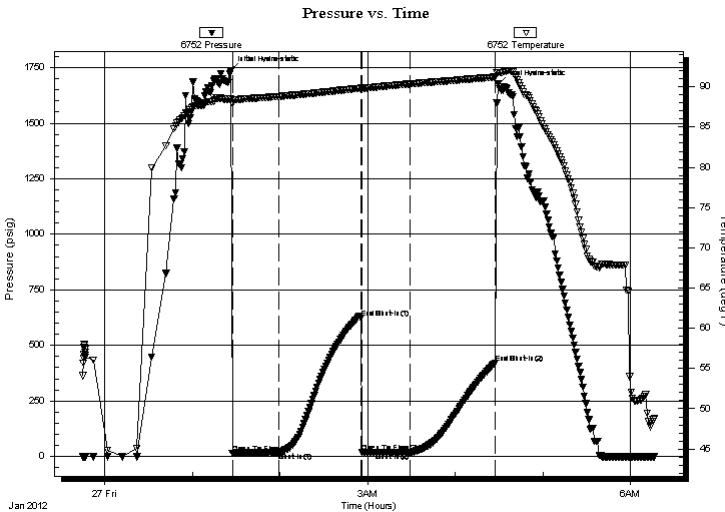
Start Time: 23:45:05 End Time: 06:16:59

Time On Btm: 2012.01.27 @ 01:26:00

Time Off Btm: 2012.01.27 @ 04:29:30

**TEST COMMENT:** IF: Weak blow, Never built pasted 1/4 in.  
IS: No blow back over 60 mins.  
FF: Weak blow, Built to 1/2 in. over 30 mins.  
FS: No blow back over 60 mins.

## PRESSURE SUMMARY



Time (Min.)	Pressure (psig)	Temp (deg F)	Annotation
0	1738.17	88.55	Initial Hydro-static
2	14.14	87.88	Open To Flow (1)
34	17.87	88.82	Shut-In(1)
90	623.27	89.83	End Shut-In(1)
90	17.33	89.80	Open To Flow (2)
123	17.17	90.37	Shut-In(2)
182	421.06	91.22	End Shut-In(2)
184	1676.10	91.81	Final Hydro-static

## Recovery

Length (ft)	Description	Volume (bbl)
5.00	mud-100%m	0.02

## Gas Rates

	Choke (inches)	Pressure (psig)	Gas Rate (Mcf/d)



**TRILOBITE  
TESTING, INC.**

**DRILL STEM TEST REPORT**

**FLUID SUMMARY**

Murfin Drilling Co.

**11 2 24w Norton Ks**

250 N. Water  
STE.300 Wichita Ks.  
67202

**Schulze #1-11**

Job Ticket: 042974

**DST#: 1**

ATTN: Robert Hendrix

Test Start: 2012.01.26 @ 23:45:00

**Mud and Cushion Information**

Mud Type: Gel Chem

Cushion Type:

Oil API:

deg API

Mud Weight: 9.00 lb/gal

Cushion Length:

ft

Water Salinity:

ppm

Viscosity: 67.00 sec/qt

Cushion Volume:

bbbl

Water Loss: 6.40 in<sup>3</sup>

Gas Cushion Type:

Resistivity: ohm.m

Gas Cushion Pressure:

psig

Salinity: 600.00 ppm

Filter Cake: 2.00 inches

**Recovery Information**

Recovery Table

Length ft	Description	Volume bbl
5.00	mud-100%m	0.025

Total Length: 5.00 ft      Total Volume: 0.025 bbl

Num Fluid Samples: 0

Num Gas Bombs: 0

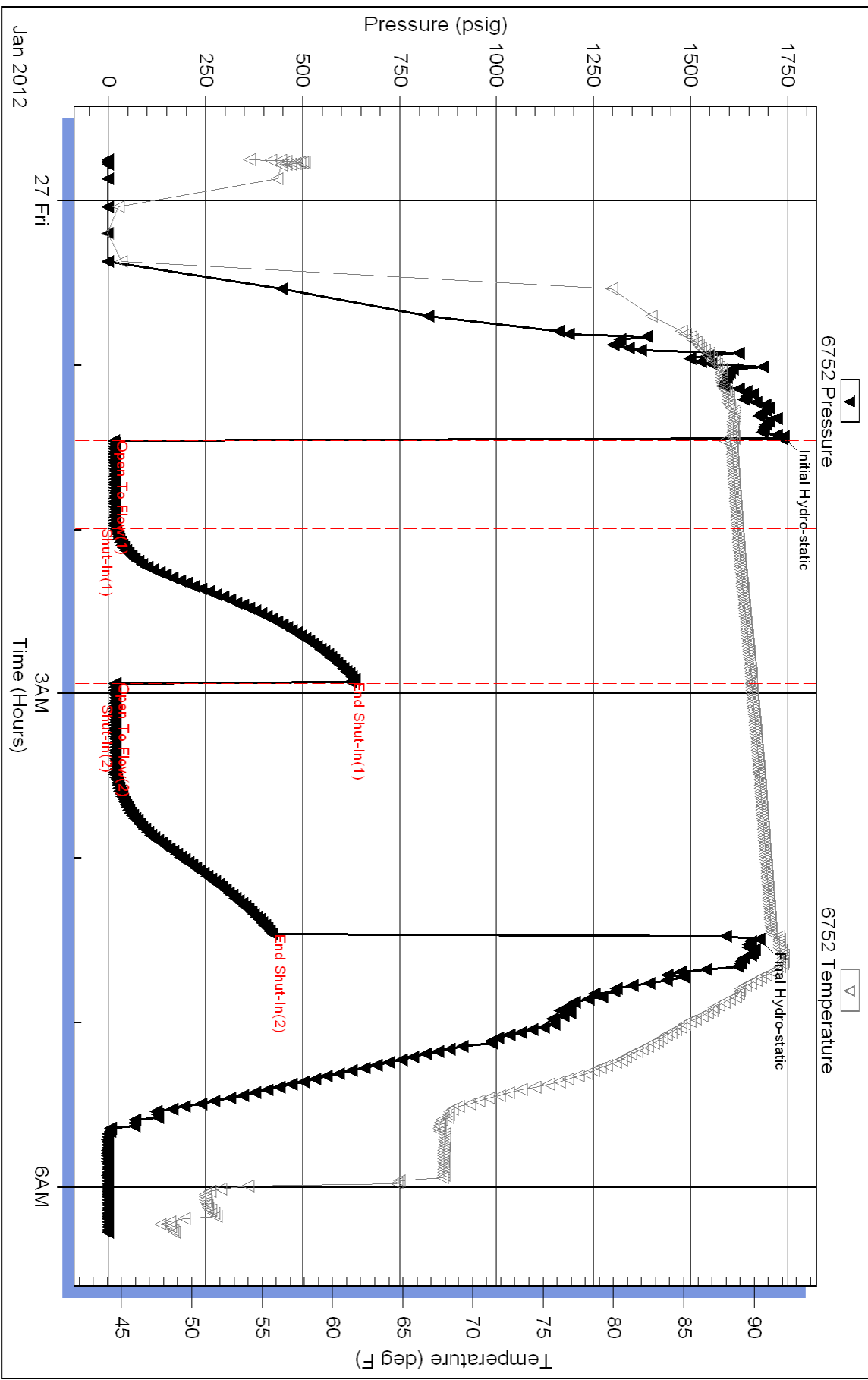
Serial #:

Laboratory Name:

Laboratory Location:

Recovery Comments:

# Pressure vs. Time





**TRILOBITE  
TESTING, INC.**

# DRILL STEM TEST REPORT

Murfin Drilling Co.

**11 2 24w Norton Ks**

250 N. Water  
STE.300 Witchita Ks.  
67202

**Schulze #1-11**

Job Ticket: 042975

**DST#: 2**

ATTN: Robert Hendrix

Test Start: 2012.01.27 @ 15:00:00

## GENERAL INFORMATION:

Formation: **LKC-F**

Deviated: No Whipstock: ft (KB)

Time Tool Opened: 16:39:30

Time Test Ended: 21:23:00

Test Type: Conventional Bottom Hole (Reset)

Tester: Chuck Kreuzer Jr

Unit No: 36

**Interval: 3557.00 ft (KB) To 3574.00 ft (KB) (TVD)**

Reference Elevations: 2520.00 ft (KB)

Total Depth: 3574.00 ft (KB) (TVD)

2510.00 ft (CF)

Hole Diameter: 7.80 inches Hole Condition: Good

KB to GR/CF: 10.00 ft

**Serial #: 6752 Inside**

Press @ Run Depth: 16.94 psig @ 3558.00 ft (KB)

Capacity: 8000.00 psig

Start Date: 2012.01.27 End Date: 2012.01.27

Last Calib.: 2012.01.27

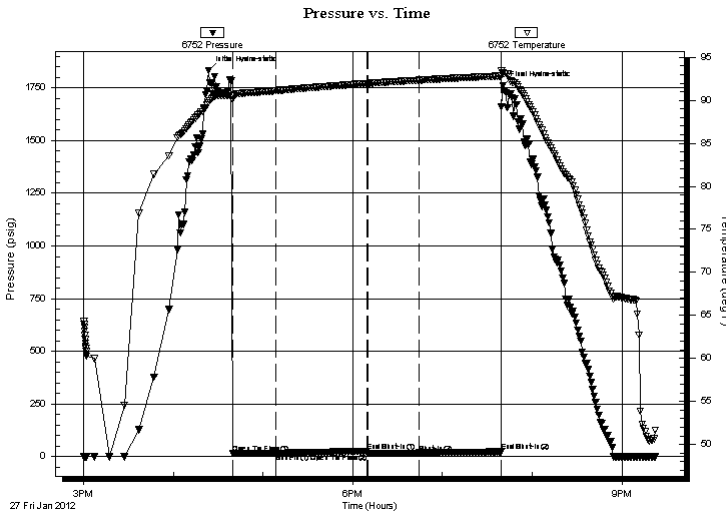
Start Time: 15:00:05 End Time: 21:22:59

Time On Btm: 2012.01.27 @ 16:23:30

Time Off Btm: 2012.01.27 @ 19:40:30

**TEST COMMENT:** IF: Weak blow, Surface blow over 30 mins.  
IS: No blow back over 60 mins.  
FF: No blow over 30 mins.  
FS: No blow back over 60 mins.

## PRESSURE SUMMARY



Time (Min.)	Pressure (psig)	Temp (deg F)	Annotation
0	1833.42	89.72	Initial Hydro-static
16	15.15	90.11	Open To Flow (1)
45	16.27	91.13	Shut-In(1)
106	25.49	91.97	End Shut-In(1)
107	15.05	91.97	Open To Flow (2)
141	16.94	92.35	Shut-In(2)
196	22.71	92.84	End Shut-In(2)
197	1760.11	93.17	Final Hydro-static

## Recovery

Length (ft)	Description	Volume (bbl)
5.00	mud-100%	0.02

## Gas Rates

Choke (inches)	Pressure (psig)	Gas Rate (Mcf/d)

\* Recovery from multiple tests





**TRILOBITE  
TESTING, INC.**

# DRILL STEM TEST REPORT

## FLUID SUMMARY

Murfin Drilling Co.

**11 2 24w Norton Ks**

250 N. Water  
STE.300 Wichita Ks.  
67202

**Schulze #1-11**

Job Ticket: 042975

**DST#: 2**

ATTN: Robert Hendrix

Test Start: 2012.01.27 @ 15:00:00

### Mud and Cushion Information

Mud Type: Gel Chem

Cushion Type:

Oil API:

deg API

Mud Weight: 9.00 lb/gal

Cushion Length:

ft

Water Salinity:

ppm

Viscosity: 64.00 sec/qt

Cushion Volume:

bbbl

Water Loss: 11.49 in<sup>3</sup>

Gas Cushion Type:

Resistivity: ohm.m

Gas Cushion Pressure:

psig

Salinity: 600.00 ppm

Filter Cake: 2.00 inches

### Recovery Information

Recovery Table

Length ft	Description	Volume bbl
5.00	mud-100%	0.025

Total Length: 5.00 ft      Total Volume: 0.025 bbl

Num Fluid Samples: 0

Num Gas Bombs: 0

Serial #:

Laboratory Name:

Laboratory Location:

Recovery Comments:

Serial #: 6752

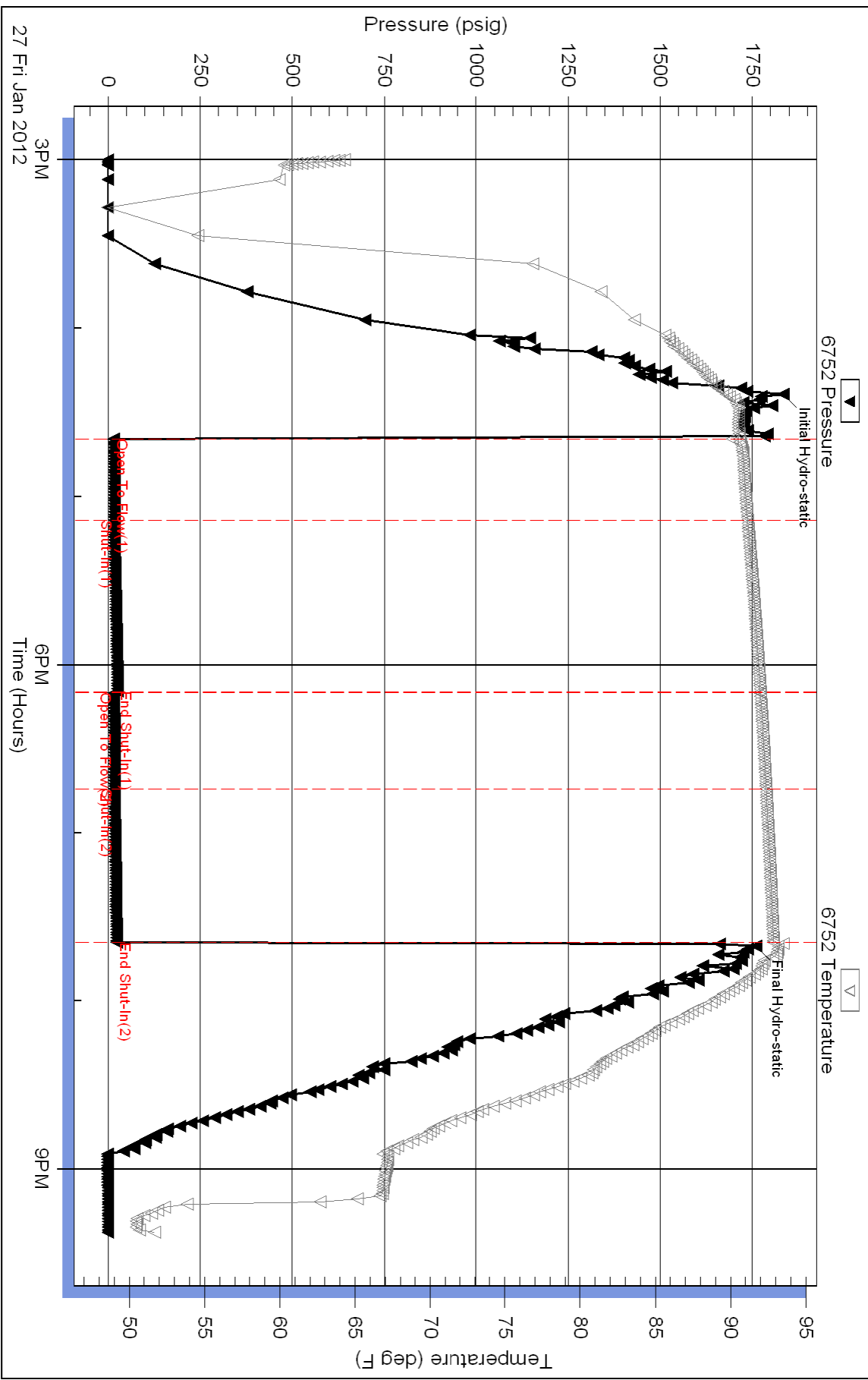
Inside

Murfin Drilling Co.

Schulze #1-11

DST Test Number: 2

### Pressure vs. Time



Triobite Testing, Inc

Ref. No: 042975

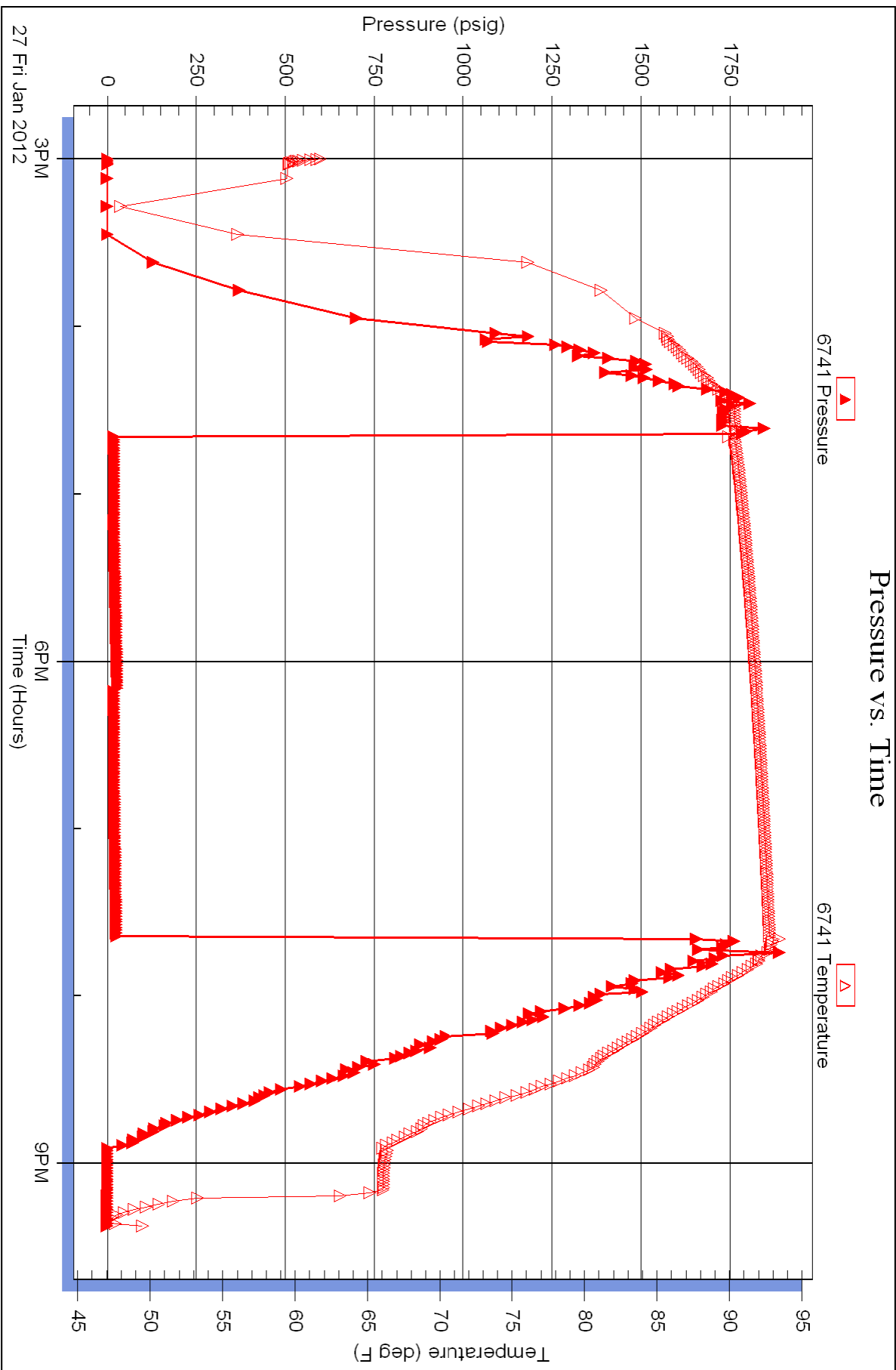
Printed: 2012.01.28 @ 10:20:12

Serial #: 6741

Outside Murfin Drilling Co.

Schulze #1-11

DST Test Number: 2







**TRILOBITE TESTING, INC.**

# DRILL STEM TEST REPORT

Murfin Drilling Co.

**11 2 24w Norton Ks**

250 N. Water  
STE.300 Wichita Ks.  
67202

**Schulze #1-11**

Job Ticket: 042026

**DST#: 3**

ATTN: Robert Hendrix

Test Start: 2012.01.28 @ 03:25:00

## GENERAL INFORMATION:

Formation: **LKC\_G**

Deviated: No Whipstock: ft (KB)

Time Tool Opened: 05:04:30

Time Test Ended: 10:44:30

Test Type: Conventional Bottom Hole (Reset)

Tester: Chuck Kreuzer Jr

Unit No: 36

**Interval: 3571.00 ft (KB) To 3590.00 ft (KB) (TVD)**

Reference Elevations: 2520.00 ft (KB)

Total Depth: 3590.00 ft (KB) (TVD)

2510.00 ft (CF)

Hole Diameter: 7.80 inches Hole Condition: Good

KB to GR/CF: 10.00 ft

**Serial #: 6752 Inside**

Press @ Run Depth: 109.27 psig @ 3572.00 ft (KB)

Capacity: 8000.00 psig

Start Date: 2012.01.28

End Date: 2012.01.28

Last Calib.: 2012.01.28

Start Time: 03:25:05

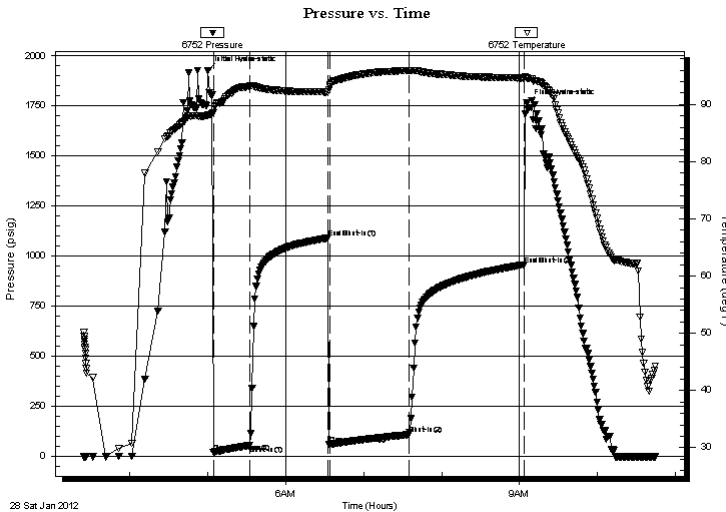
End Time: 10:44:29

Time On Btm: 2012.01.28 @ 05:00:30

Time Off Btm: 2012.01.28 @ 09:05:30

**TEST COMMENT:** IF: Weak blow, Built to 3 in. over 30 mins.  
IS: No blow back over 60 mins.  
FF: Weak blow after 5 mins., Built to 1 in. over 60 mins.  
FSI: No blow back over 90 mins.

## PRESSURE SUMMARY



Time (Min.)	Pressure (psig)	Temp (deg F)	Annotation
0	1928.22	88.10	Initial Hydro-static
4	22.30	88.59	Open To Flow (1)
32	55.13	93.25	Shut-In(1)
92	1090.68	92.18	End Shut-In(1)
94	58.82	93.18	Open To Flow (2)
155	109.27	95.95	Shut-In(2)
243	957.78	94.60	End Shut-In(2)
245	1764.00	94.60	Final Hydro-static

## Recovery

Length (ft)	Description	Volume (bbl)
60.00	w cm-30%w 70%m	0.30
120.00	MCW-10%m90%w	0.59
1.00	oil-100%	0.00

## Gas Rates

	Choke (inches)	Pressure (psig)	Gas Rate (Mcf/d)

\* Recovery from multiple tests





**TRILOBITE  
TESTING, INC.**

# DRILL STEM TEST REPORT

**FLUID SUMMARY**

Murfin Drilling Co.

**11 2 24w Norton Ks**

250 N. Water  
STE.300 Wichita Ks.  
67202

**Schulze #1-11**

Job Ticket: 042026

**DST#: 3**

ATTN: Robert Hendrix

Test Start: 2012.01.28 @ 03:25:00

## Mud and Cushion Information

Mud Type: Gel Chem

Cushion Type:

Oil API:

deg API

Mud Weight: 9.00 lb/gal

Cushion Length:

ft

Water Salinity:

ppm

Viscosity: 64.00 sec/qt

Cushion Volume:

bbf

Water Loss: 11.49 in<sup>3</sup>

Gas Cushion Type:

Resistivity: 0.51 ohm.m

Gas Cushion Pressure:

psig

Salinity: 600.00 ppm

Filter Cake: 2.00 inches

## Recovery Information

Recovery Table

Length ft	Description	Volume bbf
60.00	w cm-30%w 70%m	0.295
120.00	MCW-10%m90%w	0.590
1.00	oil-100%	0.005

Total Length: 181.00 ft      Total Volume: 0.890 bbf

Num Fluid Samples: 0

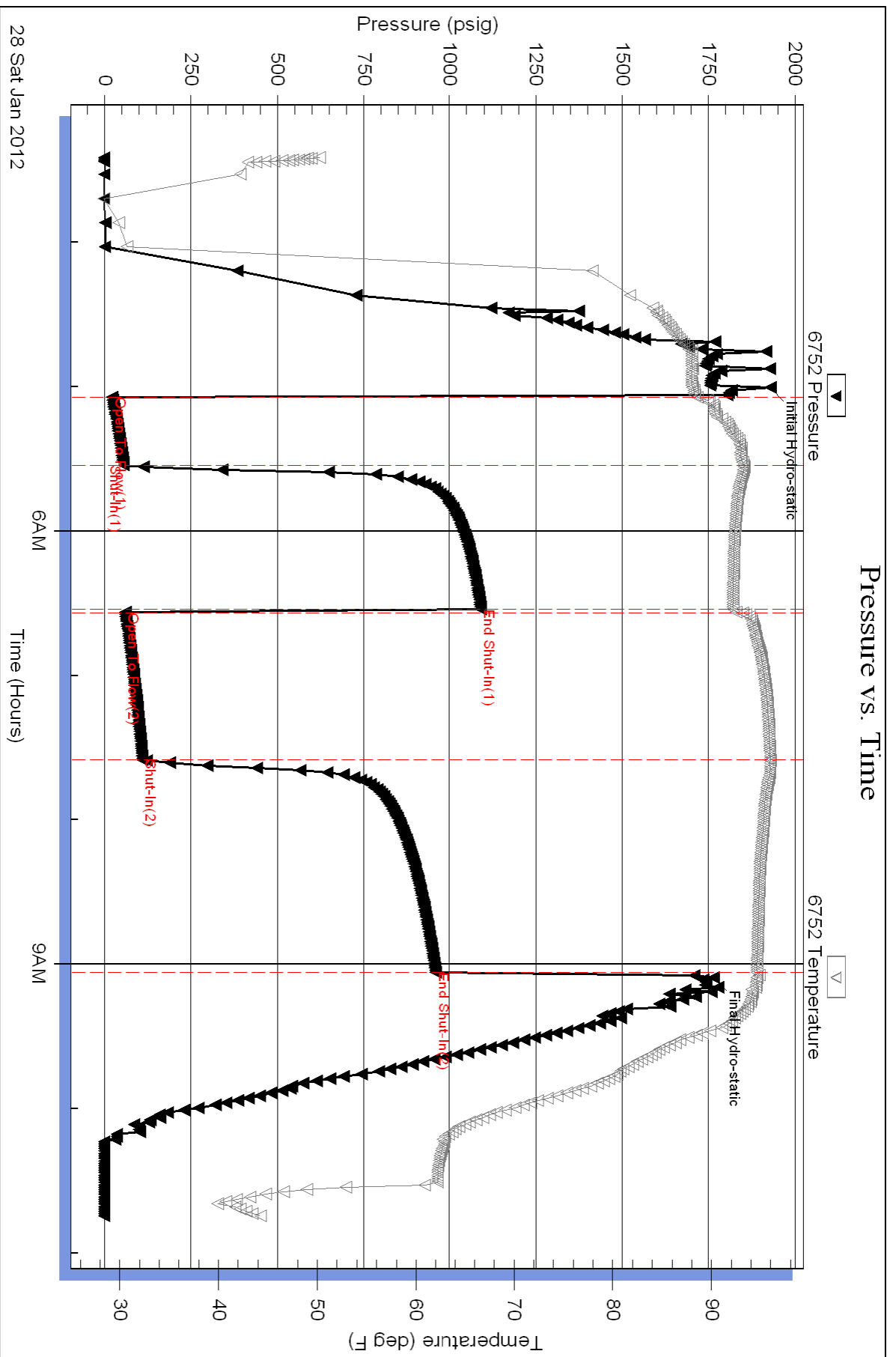
Num Gas Bombs: 0

Serial #:

Laboratory Name:

Laboratory Location:

Recovery Comments:

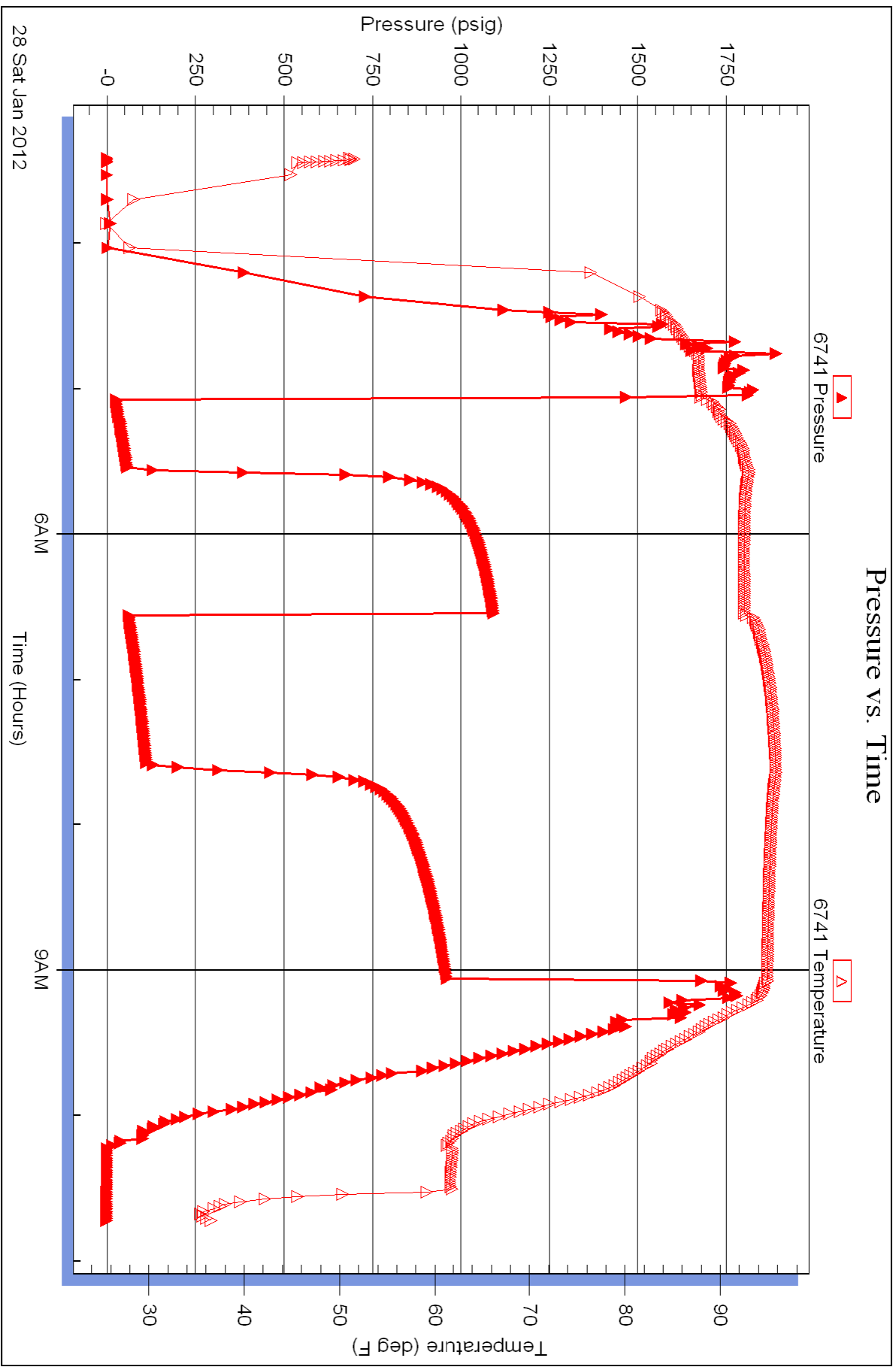


Serial #: 6741

Outside Murfin Drilling Co.

Schulze #1-11

DST Test Number: 3





**TRILOBITE  
TESTING, INC.**

# DRILL STEM TEST REPORT

Murfin Drilling Co.

**11 2 24w Norton Ks**

250 N. Water  
STE.300 Wichita Ks.  
67202

**Schulze #1-11**

Job Ticket: 042027

**DST#: 4**

ATTN: Robert Hendrix

Test Start: 2012.01.28 @ 20:22:00

## GENERAL INFORMATION:

Formation: **LKC-H-I-J**

Deviated: No Whipstock: ft (KB)

Time Tool Opened: 21:53:00

Time Test Ended: 02:50:30

Test Type: Conventional Bottom Hole (Reset)

Tester: Chuck Kreuzer Jr

Unit No: 36

**Interval: 3596.00 ft (KB) To 3645.00 ft (KB) (TVD)**

Reference Elevations: 2520.00 ft (KB)

Total Depth: 3645.00 ft (KB) (TVD)

2510.00 ft (CF)

Hole Diameter: 7.80 inches Hole Condition: Good

KB to GR/CF: 10.00 ft

**Serial #: 6752 Inside**

Press @ Run Depth: 21.38 psig @ 3599.00 ft (KB)

Capacity: 8000.00 psig

Start Date: 2012.01.28

End Date:

2012.01.29

Last Calib.:

2012.01.29

Start Time: 20:22:05

End Time:

02:50:29

Time On Btm:

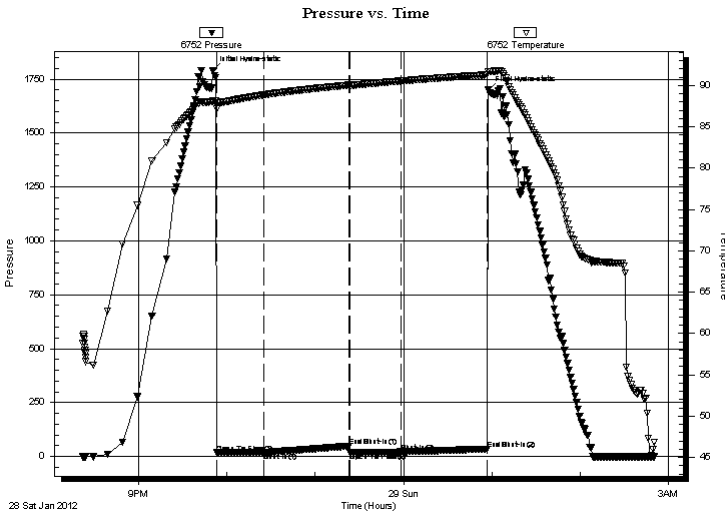
2012.01.28 @ 21:50:30

Time Off Btm:

2012.01.29 @ 00:57:30

**TEST COMMENT:** IF: Weak blow, Died in 25 mins.  
IS: No blow back over 60 mins.  
FF: No blow over 30 mins.  
FS: No blow back over 60 mins.

## PRESSURE SUMMARY



Time (Min.)	Pressure (psig)	Temp (deg F)	Annotation
0	1790.76	88.09	Initial Hydro-static
3	16.73	87.14	Open To Flow (1)
35	18.42	88.85	Shut-In(1)
93	48.38	90.05	End Shut-In(1)
93	19.64	90.04	Open To Flow (2)
128	21.38	90.53	Shut-In(2)
186	34.62	91.29	End Shut-In(2)
187	1699.24	91.66	Final Hydro-static

## Recovery

Length (ft)	Description	Volume (bbl)
5.00	mud-100%	0.02

\* Recovery from multiple tests

## Gas Rates

Choke (inches)	Pressure (psig)	Gas Rate (Mcf/d)



**TRILOBITE  
TESTING, INC.**

# DRILL STEM TEST REPORT

## FLUID SUMMARY

Murfin Drilling Co.

**11 2 24w Norton Ks**

250 N. Water  
STE.300 Wichita Ks.  
67202

**Schulze #1-11**

Job Ticket: 042027

**DST#: 4**

ATTN: Robert Hendrix

Test Start: 2012.01.28 @ 20:22:00

### Mud and Cushion Information

Mud Type: Gel Chem

Cushion Type:

Oil API:

deg API

Mud Weight: 9.00 lb/gal

Cushion Length:

ft

Water Salinity:

ppm

Viscosity: 65.00 sec/qt

Cushion Volume:

bbbl

Water Loss: 5.99 in<sup>3</sup>

Gas Cushion Type:

Resistivity: ohm.m

Gas Cushion Pressure:

psig

Salinity: 700.00 ppm

Filter Cake: 2.00 inches

### Recovery Information

Recovery Table

Length ft	Description	Volume bbl
5.00	mud-100%	0.025

Total Length: 5.00 ft      Total Volume: 0.025 bbl

Num Fluid Samples: 0

Num Gas Bombs: 0

Serial #:

Laboratory Name:

Laboratory Location:

Recovery Comments:

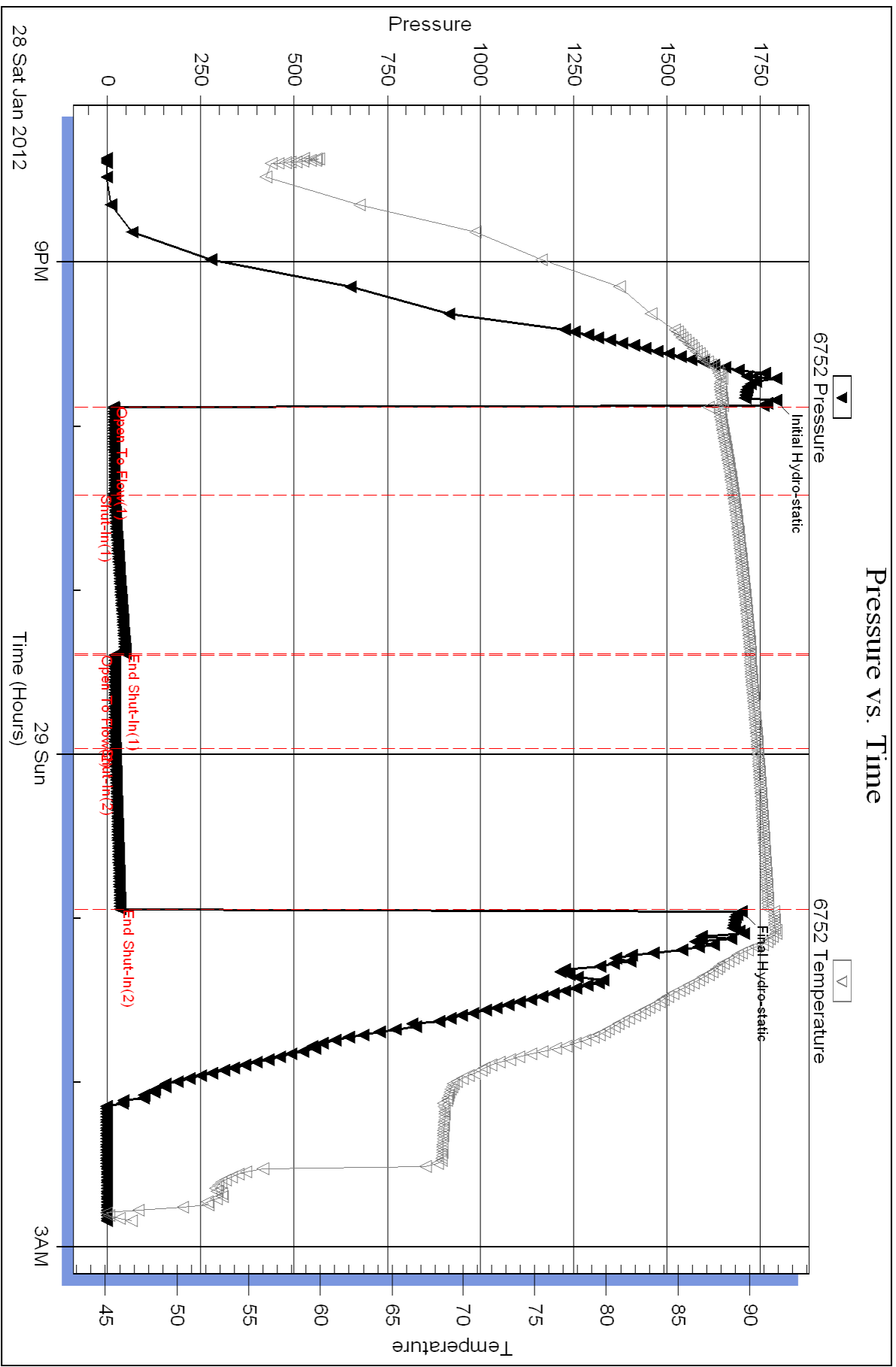
Serial #: 6752

Inside

Murfin Drilling Co.

Schulze #1-11

DST Test Number: 4







**TRILOBITE TESTING, INC.**

# DRILL STEM TEST REPORT

Murfin Drilling Co.

**11 2 24w Norton Ks**

250 N. Water  
STE.300 Wichita Ks.  
67202

**Schulze #1-11**

Job Ticket: 042028

**DST#: 5**

ATTN: Robert Hendrix

Test Start: 2012.01.29 @ 12:30:00

## GENERAL INFORMATION:

Formation: **LKC-K,L**

Deviated: No Whipstock: ft (KB)

Time Tool Opened: 14:16:00

Time Test Ended: 15:30:00

Test Type: Conventional Bottom Hole (Reset)

Tester: Chuck Kreuzer Jr

Unit No: 36

**Interval: 3639.00 ft (KB) To 3686.00 ft (KB) (TVD)**

Reference Elevations: 2520.00 ft (KB)

Total Depth: 3540.00 ft (KB) (TVD)

2510.00 ft (CF)

Hole Diameter: 7.80 inches Hole Condition: Good

KB to GR/CF: 10.00 ft

**Serial #: 6752 Inside**

Press @ Run Depth: psig @ 3642.00 ft (KB)

Capacity: 8000.00 psig

Start Date: 2012.01.29

End Date:

2012.01.29

Last Calib.:

2012.01.29

Start Time: 12:30:05

End Time:

23:28:30

Time On Btm:

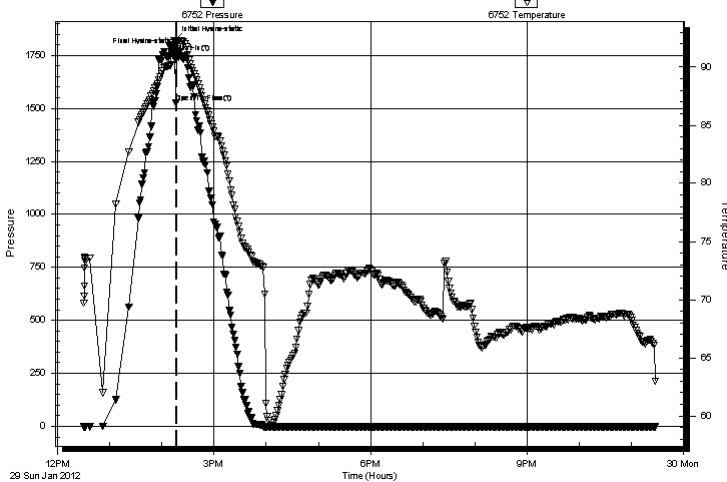
2012.01.29 @ 14:14:00

Time Off Btm:

2012.01.29 @ 14:20:30

**TEST COMMENT:** IF: Trip in hole with tool, Went to set tool and started loosing mud as we were putting w.t. on tool. Picked up and bled off blow (mud only went down 20 feet). Tried to set tool again, Tool opened, Lost mud. Pulled tool. Went back in hole with bit to circ. Went back to drilling.

Pressure vs. Time



## PRESSURE SUMMARY

Time (Min.)	Pressure (psig)	Temp (deg F)	Annotation
0	1820.25	91.90	Initial Hydro-static
2	1527.10	91.98	Open To Flow (1)
3	1761.68	92.21	Shut-In(1)
7	1764.47	92.26	Final Hydro-static

## Recovery

Length (ft)	Description	Volume (bbl)
5.00	mud-100%m	0.02

## Gas Rates

	Choke (inches)	Pressure (psig)	Gas Rate (Mcf/d)

\* Recovery from multiple tests



**TRILOBITE  
TESTING, INC.**

**DRILL STEM TEST REPORT**

**FLUID SUMMARY**

Murfin Drilling Co.

**11 2 24w Norton Ks**

250 N. Water  
STE.300 Wichita Ks.  
67202

**Schulze #1-11**

Job Ticket: 042028

**DST#: 5**

ATTN: Robert Hendrix

Test Start: 2012.01.29 @ 12:30:00

**Mud and Cushion Information**

Mud Type: Gel Chem

Cushion Type:

Oil API:

deg API

Mud Weight: 9.00 lb/gal

Cushion Length:

ft

Water Salinity:

ppm

Viscosity: 67.00 sec/qt

Cushion Volume:

bbbl

Water Loss: 6.38 in<sup>3</sup>

Gas Cushion Type:

Resistivity: ohm.m

Gas Cushion Pressure:

psig

Salinity: 600.00 ppm

Filter Cake: 2.00 inches

**Recovery Information**

Recovery Table

Length ft	Description	Volume bbbl
5.00	mud-100%m	0.025

Total Length:

ft

Total Volume:

bbbl

Num Fluid Samples:

Num Gas Bombs:

Serial #:

Laboratory Name:

Laboratory Location:

Recovery Comments:

Serial #: 6752

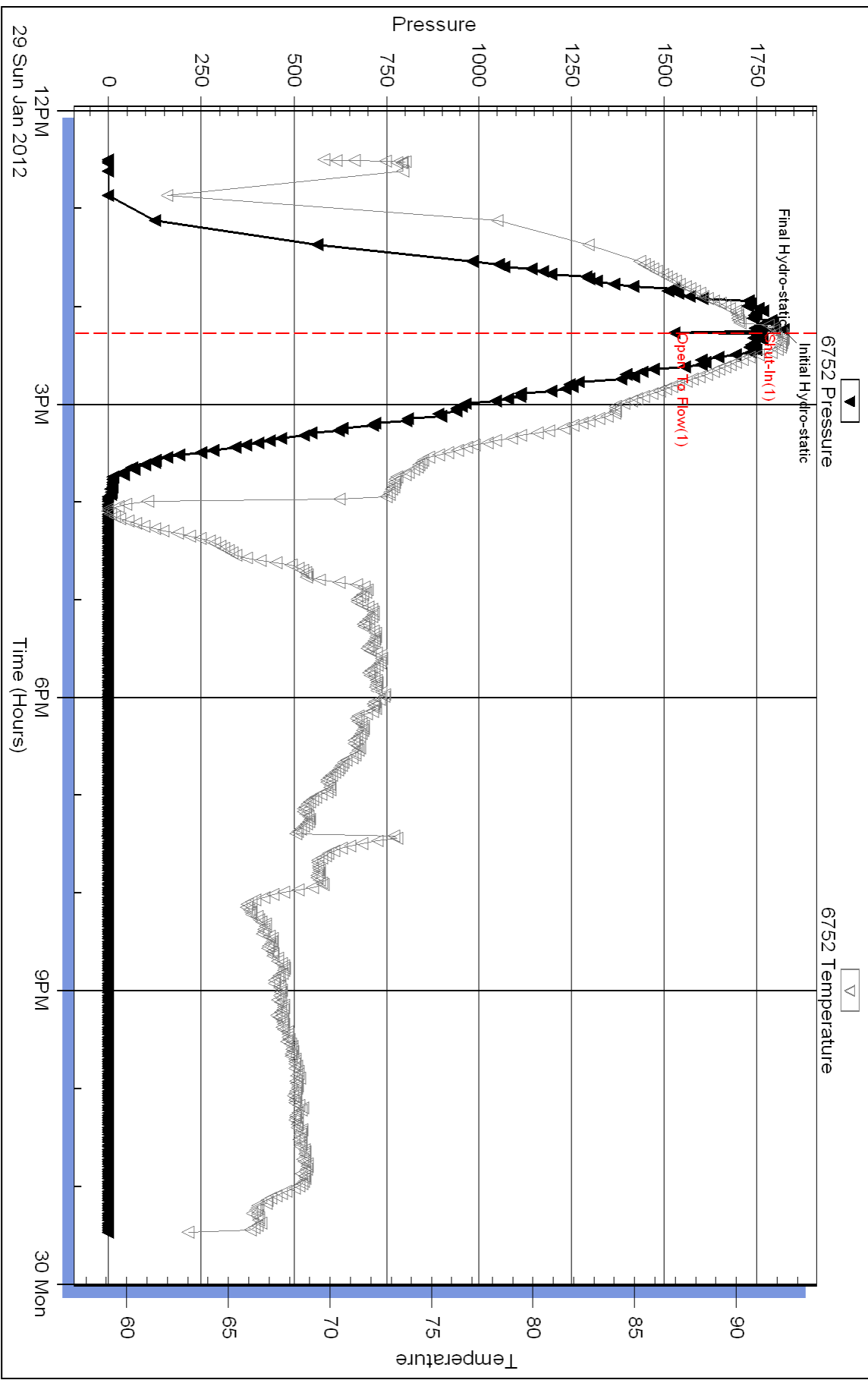
Inside

Murfin Drilling Co.

Schulze #1-11

DST Test Number: 5

### Pressure vs. Time





**TRILOBITE TESTING, INC.**

# DRILL STEM TEST REPORT

Murfin Drilling Co.

**11 2 24w Norton Ks**

250 N. Water  
STE.300 Witchita Ks.  
67202

**Schulze #1-11**

Job Ticket: 04229

**DST#: 6**

ATTN: Robert Hendrix

Test Start: 2012.01.30 @ 00:01:00

## GENERAL INFORMATION:

Formation: **Arbuckle**

Deviated: No Whipstock: ft (KB)

Time Tool Opened: 01:35:30

Time Test Ended: 06:33:30

Test Type: Conventional Bottom Hole (Reset)

Tester: Chuck Kreuzer Jr

Unit No: 36

**Interval: 37065.0 ft (KB) To 3730.00 ft (KB) (TVD)**

Reference Elevations: 2520.00 ft (KB)

Total Depth: 3730.00 ft (KB) (TVD)

2510.00 ft (CF)

Hole Diameter: 7.80 inches Hole Condition: Good

KB to GR/CF: 10.00 ft

**Serial #: 6752 Inside**

Press @ Run Depth: 20.76 psig @ 3709.00 ft (KB)

Capacity: 8000.00 psig

Start Date: 2012.01.30 End Date: 2012.01.30

Last Calib.: 2012.01.30

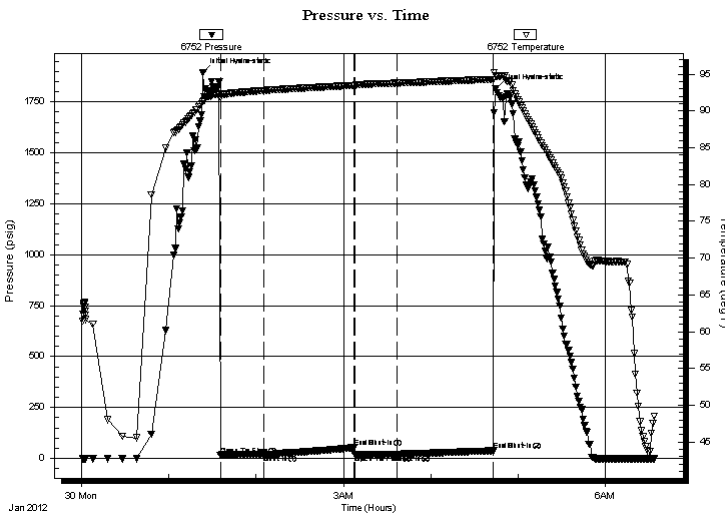
Start Time: 00:01:05 End Time: 06:33:29

Time On Btm: 2012.01.30 @ 01:23:30

Time Off Btm: 2012.01.30 @ 04:44:30

**TEST COMMENT:** IF: Weak surface blow over 30 mins.  
IS: No blow back over 60 mins.  
FF: No blow over 30 mins.  
FS: No blow back over 60 mins.

## PRESSURE SUMMARY



Time (Min.)	Pressure (psig)	Temp (deg F)	Annotation
0	1895.07	91.26	Initial Hydro-static
12	16.88	91.88	Open To Flow (1)
42	19.20	92.80	Shut-In(1)
104	53.02	93.49	End Shut-In(1)
104	19.80	93.50	Open To Flow (2)
133	20.76	93.81	Shut-In(2)
200	38.25	94.33	End Shut-In(2)
201	1813.94	94.74	Final Hydro-static

## Recovery

Length (ft)	Description	Volume (bbl)
5.00	mud-100%	0.02

\* Recovery from multiple tests

## Gas Rates

Choke (inches)	Pressure (psig)	Gas Rate (Mcf/d)



**TRILOBITE  
TESTING, INC.**

**DRILL STEM TEST REPORT**

**FLUID SUMMARY**

Murfin Drilling Co.

**11 2 24w Norton Ks**

250 N. Water  
STE.300 Wichita Ks.  
67202

**Schulze #1-11**

Job Ticket: 04229

**DST#: 6**

ATTN: Robert Hendrix

Test Start: 2012.01.30 @ 00:01:00

**Mud and Cushion Information**

Mud Type: Gel Chem

Cushion Type:

Oil API:

deg API

Mud Weight: 9.00 lb/gal

Cushion Length:

ft

Water Salinity:

ppm

Viscosity: 60.00 sec/qt

Cushion Volume:

bbbl

Water Loss: 6.40 in<sup>3</sup>

Gas Cushion Type:

Resistivity: ohm.m

Gas Cushion Pressure:

psig

Salinity: 1300.00 ppm

Filter Cake: 2.00 inches

**Recovery Information**

Recovery Table

Length ft	Description	Volume bbl
5.00	mud-100%	0.025

Total Length: 5.00 ft      Total Volume: 0.025 bbl

Num Fluid Samples: 0

Num Gas Bombs: 0

Serial #:

Laboratory Name:

Laboratory Location:

Recovery Comments:

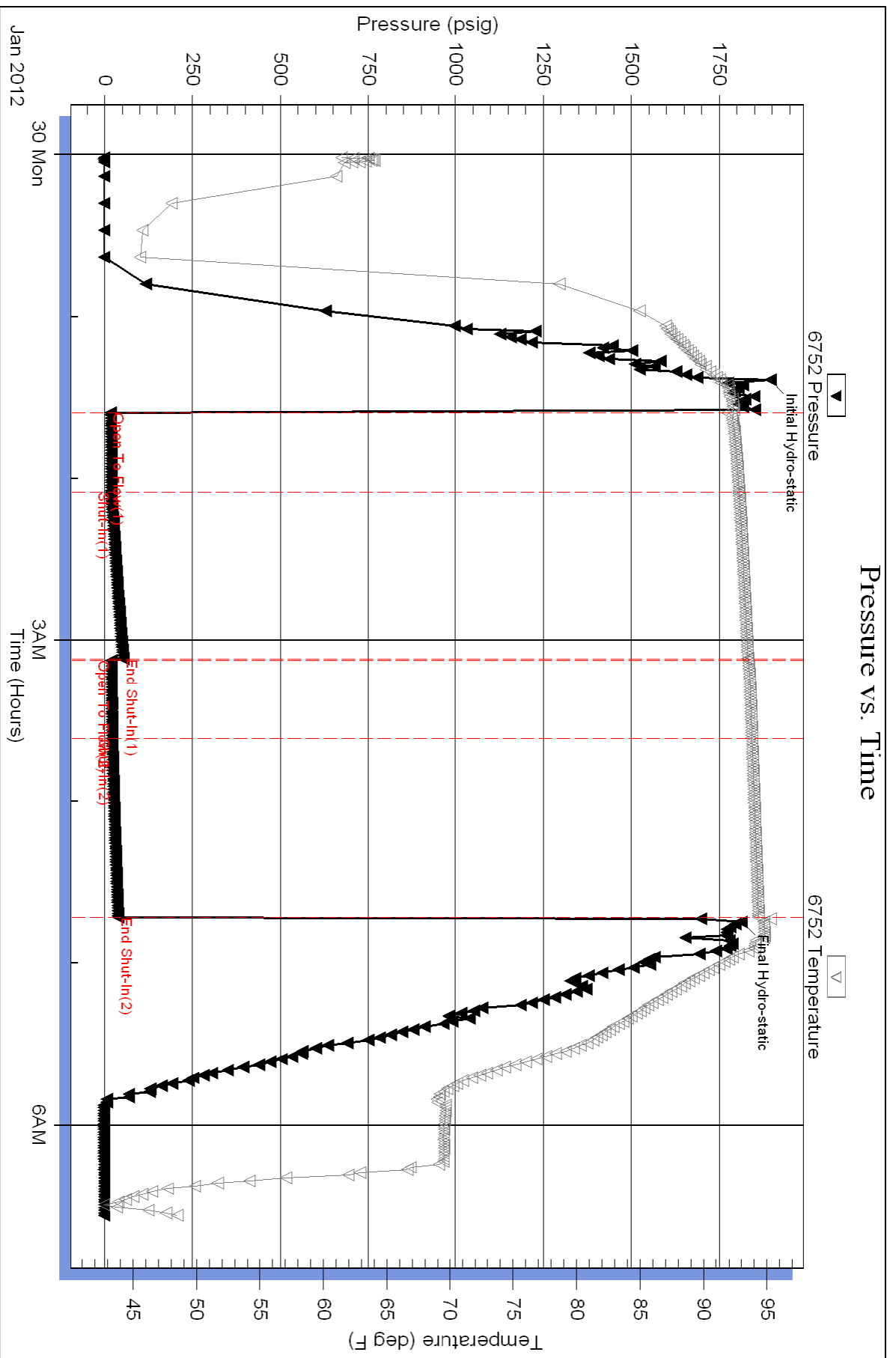
Serial #: 6752

Inside

Murfin Drilling Co.

Schulze #1-11

DST Test Number: 6





**TRILOBITE TESTING, INC**

# DRILL STEM TEST REPORT

Murfin Drilling Co.

**11 2 24w Norton Ks**

250 N. Water  
STE.300 Wichita Ks.  
67202

**Schulze #1-11**

Job Ticket: 042030

**DST#: 7**

ATTN: Robert Hendrix

Test Start: 2012.01.31 @ 00:55:00

## GENERAL INFORMATION:

Formation: **Reagan sand**

Deviated: No Whipstock: ft (KB)

Time Tool Opened: 02:27:30

Time Test Ended: 09:23:30

Test Type: Conventional Bottom Hole (Reset)

Tester: Chuck Kreuzer Jr

Unit No: 36

**Interval: 3724.00 ft (KB) To 3803.00 ft (KB) (TVD)**

Reference Elevations: 2520.00 ft (KB)

Total Depth: 3803.00 ft (KB) (TVD)

2510.00 ft (CF)

Hole Diameter: 7.80 inches Hole Condition: Good

KB to GR/CF: 10.00 ft

**Serial #: 6741 Outside**

Press @ Run Depth: 451.02 psig @ 3726.00 ft (KB)

Capacity: 8000.00 psig

Start Date: 2012.01.31

End Date:

2012.01.31

Last Calib.:

2012.01.31

Start Time: 00:55:05

End Time:

09:23:29

Time On Btm:

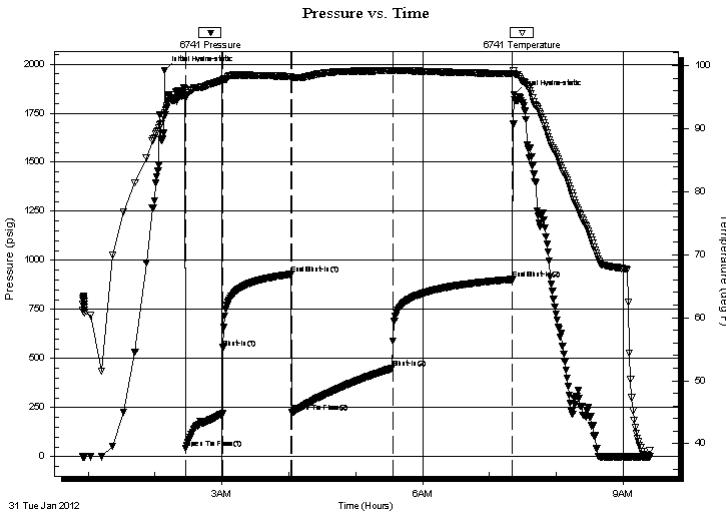
2012.01.31 @ 02:08:30

Time Off Btm:

2012.01.31 @ 07:22:00

**TEST COMMENT:** IF: Strong blow , Built to B.O.B in 6 mins.  
IS: No blow back over 60 mins.  
FF: Weak blow built to B.O.B in 28 mins.  
FS: No blow back over 90 mins.

## PRESSURE SUMMARY



Time (Min.)	Pressure (psig)	Temp (deg F)	Annotation
0	1967.84	92.58	Initial Hydro-static
19	41.99	95.03	Open To Flow (1)
53	554.83	97.82	Shut-In(1)
113	928.75	98.29	End Shut-In(1)
114	224.40	97.96	Open To Flow (2)
205	451.02	99.17	Shut-In(2)
312	903.23	98.71	End Shut-In(2)
314	1846.25	98.76	Final Hydro-static

## Recovery

Length (ft)	Description	Volume (bbl)
866.00	mcw -5% m95%w	9.97
252.00	w cm-50%w 50%m	3.53

## Gas Rates

	Choke (inches)	Pressure (psig)	Gas Rate (Mcf/d)

\* Recovery from multiple tests



**TRILOBITE  
TESTING, INC**

# DRILL STEM TEST REPORT

**FLUID SUMMARY**

Murfin Drilling Co.

**11 2 24w Norton Ks**

250 N. Water  
STE.300 Wichita Ks.  
67202

**Schulze #1-11**

Job Ticket: 042030

**DST#: 7**

ATTN: Robert Hendrix

Test Start: 2012.01.31 @ 00:55:00

## Mud and Cushion Information

Mud Type: Gel Chem

Cushion Type:

Oil API:

deg API

Mud Weight: 9.00 lb/gal

Cushion Length: ft

Water Salinity: ppm

Viscosity: 60.00 sec/qt

Cushion Volume: bbl

Water Loss: 6.40 in<sup>3</sup>

Gas Cushion Type:

Resistivity: ohm.m

Gas Cushion Pressure: psig

Salinity: 1300.00 ppm

Filter Cake: 2.00 inches

## Recovery Information

Recovery Table

Length ft	Description	Volume bbl
866.00	mcw -5%m95%w	9.971
252.00	w cm-50%w 50%m	3.535

Total Length: 1118.00 ft      Total Volume: 13.506 bbl

Num Fluid Samples: 0

Num Gas Bombs: 0

Serial #:

Laboratory Name:

Laboratory Location:

Recovery Comments:



