

Robert D. Hendrix

Petroleum Geologist

GEOLOGIST'S REPORT

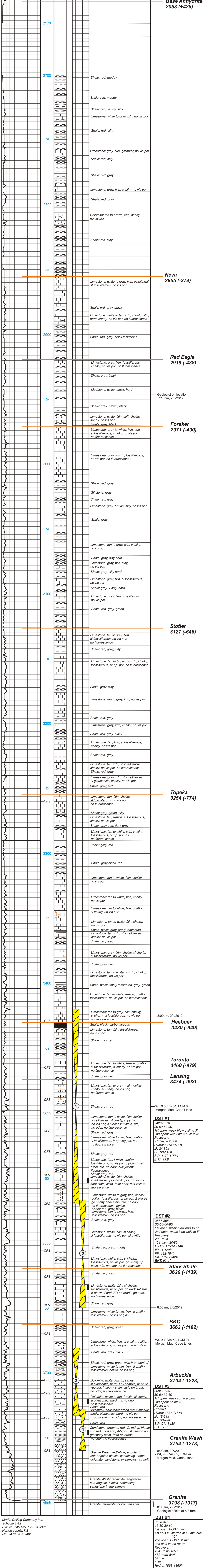
DRILLING TIME AND SAMPLE LOG

COMPANY	Murfin Drilling Co. Inc.	ELEVATIONS	KB 2481
LEASE	Schulze 1-12	FIELD	Wildcat
LOCATION	2330' FSL & 690' FEE	SEC	12
COUNTY	Norton	TWSP	2 S
CONTRACTOR	Murfin Drilling	STATE	RGE
SPUD	2/01/2012	COMP	24W
RTD	3/7/99	LTD	2/08/2012
MUD UP	2610	TYPE MUD	Chemical
SAMPLES SAVED FROM	2700 TO RTD	CONDUIT	None
DRILLING TIME KEPT FROM	2700 TO RTD	PRODUCTION	None
SAMPLES EXAMINED FROM	2700 TO RTD	ELECTRICAL SURVEYS	DL / CN-CD Metro/Scientific Log-Tech
GEOLOGICAL SUPERVISION FROM 204760 RTD		GEOLOGIST ON WELL Robert D. Hendrix	
FORMATION TOPS		ELECTRIC LOG	
Neiva	2858 (-377)	2855 (-374)	2023 (+458)
Topeka	3257 (-777)	3254 (-774)	2024 (+457)
Heebner Sh.	3430 (-949)	3430 (-949)	2855 (-374)
Lansing	3480 (-999)	3474 (-993)	3254 (-774)
Stark Sh.	3620 (-1139)	3620 (-1139)	3480 (-999)
BKC	3663 (-1182)	3663 (-1182)	3620 (-1139)
Arbuckle	3704 (-1223)	3704 (-1223)	3663 (-1182)
Granite Wash	3754 (-1273)	3754 (-1273)	3704 (-1223)

REMARKS

LEGEND

	Anhydrite		Sandstone		Limestone		Shale		Carb Sh		Cherty LS		Chert		Dolomite
--	-----------	--	-----------	--	-----------	--	-------	--	---------	--	-----------	--	-------	--	----------



Murfin Drilling Company Inc.
Schulze 1-12
SW NE NW SW 12 - 2s - 24w
Norton county, KS
GL: 2470, KB: 2481

DST #4
3628-3735
30-60-30-60
1st open: weak surface blow
2nd open: no blow
Recovery: 1/2"
2nd open: BOB 1 1/4 min
2nd shut in: no return
Recovery: 434' m w 50/50
682' mcw 5/95
547' w
5' m
Hydro: 1868-1860#
IF: 130-442#
FF: 459-750#
SIP: 989-997#
BHT: 100°