

**TRILOBITE
TESTING, INC.**

DRILL STEM TEST REPORT

Hess Oil Company
P.O. Box 1009
McPherson, KS 67460
ATTN: Jamie Hess

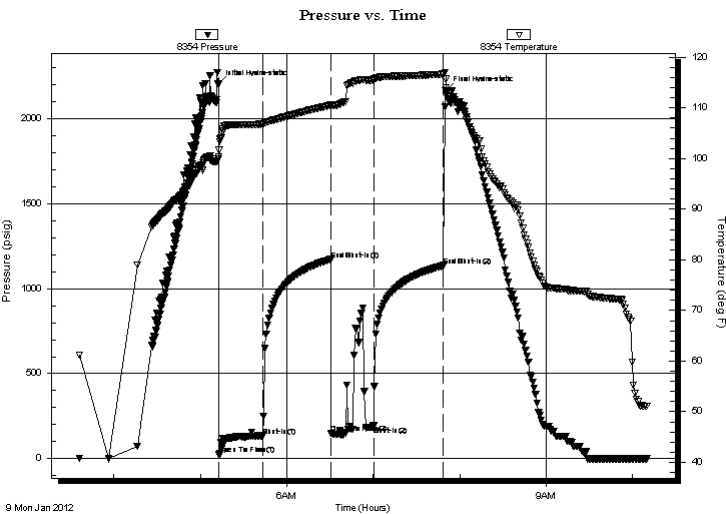
20/17S/22W-Ness
Wandelene #2
Job Ticket: 46361 **DST#: 2**
Test Start: 2012.01.09 @ 03:26:15

GENERAL INFORMATION:

Formation: **Mississippian**
Deviated: No Whipstock: ft (KB) Test Type: Conventional Bottom Hole (Initial)
Time Tool Opened: 05:13:05 Tester: Dustin Rash
Time Test Ended: 10:10:15 Unit No: 38
Interval: 4270.00 ft (KB) To 4280.00 ft (KB) (TVD) Reference Elevations: 2275.00 ft (KB)
Total Depth: 4280.00 ft (KB) (TVD) 2270.00 ft (CF)
Hole Diameter: 7.88 inches Hole Condition: Fair KB to GR/CF: 5.00 ft

Serial #: 8354 Inside
Press @ RunDepth: 192.82 psig @ 4272.00 ft (KB) Capacity: 8000.00 psig
Start Date: 2012.01.09 End Date: 2012.01.09 Last Calib.: 2012.01.09
Start Time: 03:36:15 End Time: 10:10:15 Time On Btm: 2012.01.09 @ 05:12:45
Time Off Btm: 2012.01.09 @ 07:50:15

TEST COMMENT: IF-Fair building blow . Built to 8 inches.
ISI-No Return.
FF-Fair building blow . Built to 8 inches.
FSI-No Return.



PRESSURE SUMMARY

Time (Min.)	Pressure (psig)	Temp (deg F)	Annotation
0	2204.99	100.30	Initial Hydro-static
1	25.68	101.67	Open To Flow (1)
31	134.51	106.86	Shut-In(1)
78	1172.20	110.55	End Shut-In(1)
78	148.10	110.26	Open To Flow (2)
108	192.82	115.52	Shut-In(2)
156	1136.50	116.69	End Shut-In(2)
158	2167.87	115.71	Final Hydro-static

Recovery

Length (ft)	Description	Volume (bbl)
242.00	10%Oil/90%Mud	1.19
62.00	20%Oil/80%Mud	0.87
62.00	40%Oil/60%Mud	0.87
4.00	20%Gas/80%Oil	0.06
0.00	60' G.I.P.	0.00

Gas Rates

Choke (inches)	Pressure (psig)	Gas Rate (Mcf/d)



**TRILOBITE
TESTING, INC.**

DRILL STEM TEST REPORT

FLUID SUMMARY

Hess Oil Company
P.O. Box 1009
McPherson, KS 67460
ATTN: Jamie Hess

20/17S/22W-Ness
Wandelene #2
Job Ticket: 46361 **DST#: 2**
Test Start: 2012.01.09 @ 03:26:15

Mud and Cushion Information

Mud Type: Gel Chem	Cushion Type:	Oil API: 42 deg API
Mud Weight: 9.00 lb/gal	Cushion Length: ft	Water Salinity: ppm
Viscosity: 59.00 sec/qt	Cushion Volume: bbl	
Water Loss: 9.98 in ³	Gas Cushion Type:	
Resistivity: ohm.m	Gas Cushion Pressure: psig	
Salinity: 12400.00 ppm		
Filter Cake: inches		

Recovery Information

Recovery Table

Length ft	Description	Volume bbl
242.00	10%Oil/90%Mud	1.190
62.00	20%Oil/80%Mud	0.870
62.00	40%Oil/60%Mud	0.870
4.00	20%Gas/80%Oil	0.056
0.00	60' G.I.P.	0.000

Total Length: 370.00 ft Total Volume: 2.986 bbl
 Num Fluid Samples: 0 Num Gas Bombs: 0 Serial #:
 Laboratory Name: Laboratory Location:
 Recovery Comments:

Serial #: 8354

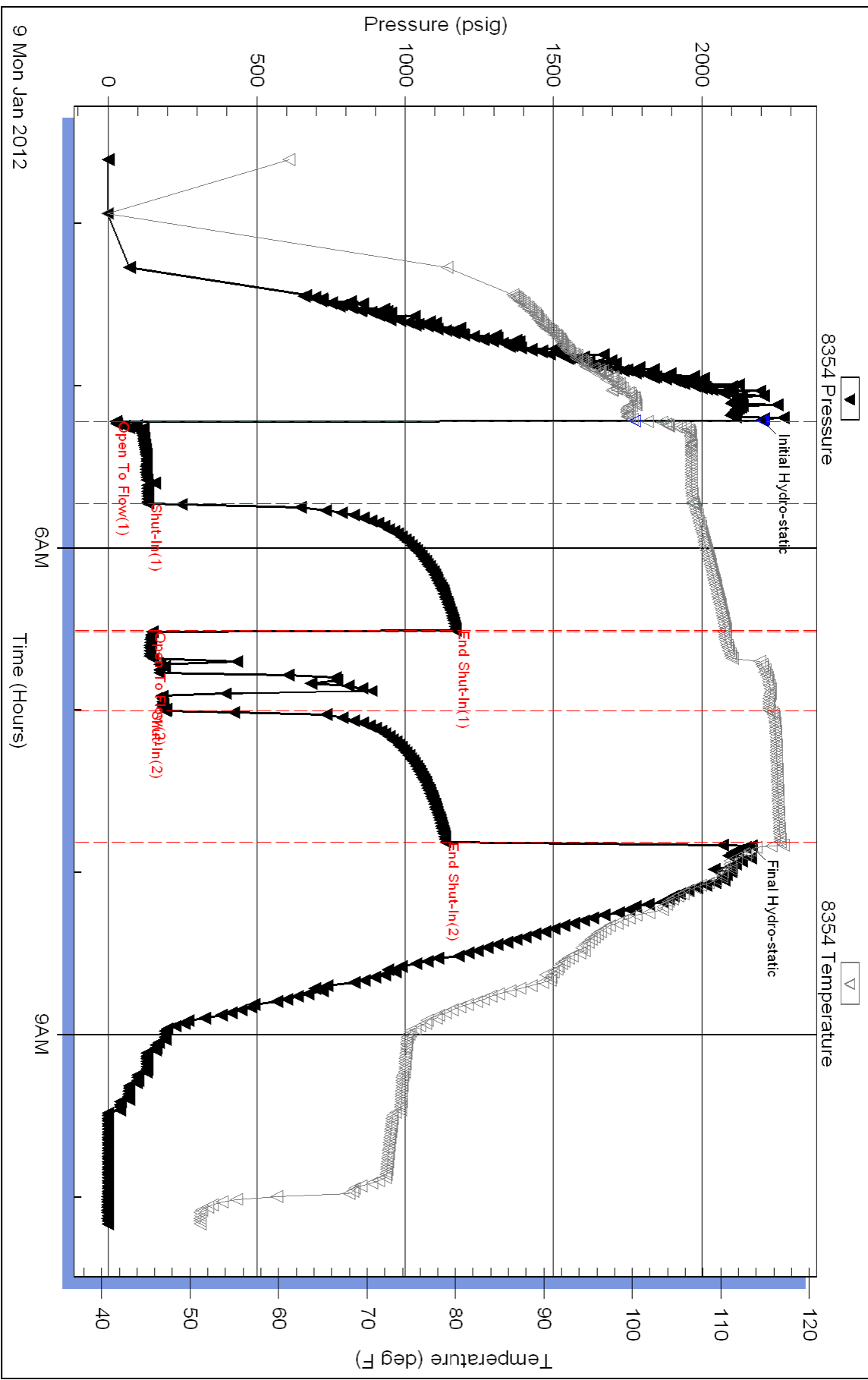
Inside

Hess Oil Company

Wandelene #2

DST Test Number: 2

Pressure vs. Time



Triobite Testing, Inc

Ref. No: 46361

Printed: 2012.01.09 @ 11:51:43