



TRILOBITE TESTING, INC.

DRILL STEM TEST REPORT

Samuel Gary Jr. & Ass. Inc.

15-12s-17w Ellis

1515 Wynkoop st. Suite 700
Denver CO, 80202

Schmeidler et 1-15

ATTN: Clayton Camozzi

Job Ticket: 46330

DST#: 3

Test Start: 2011.12.09 @ 18:28:00

GENERAL INFORMATION:

Formation: **Lansing "I"**

Deviated: No Whipstock: ft (KB)

Time Tool Opened: 20:33:10

Time Test Ended: 01:33:50

Test Type: Conventional Bottom Hole (Reset)

Tester: Cody Bloedorn

Unit No: 39

Interval: 3520.00 ft (KB) To 2542.00 ft (KB) (TVD)

Reference Elevations: 2135.00 ft (KB)

Total Depth: 3542.00 ft (KB) (TVD)

2127.00 ft (CF)

Hole Diameter: 7.88 inches Hole Condition: Fair

KB to GR/CF: 8.00 ft

Serial #: 8017 Inside

Press @ Run Depth: 21.40 psig @ 3539.00 ft (KB)

Capacity: 8000.00 psig

Start Date: 2011.12.09 End Date: 2011.12.10

Last Calib.: 2011.12.10

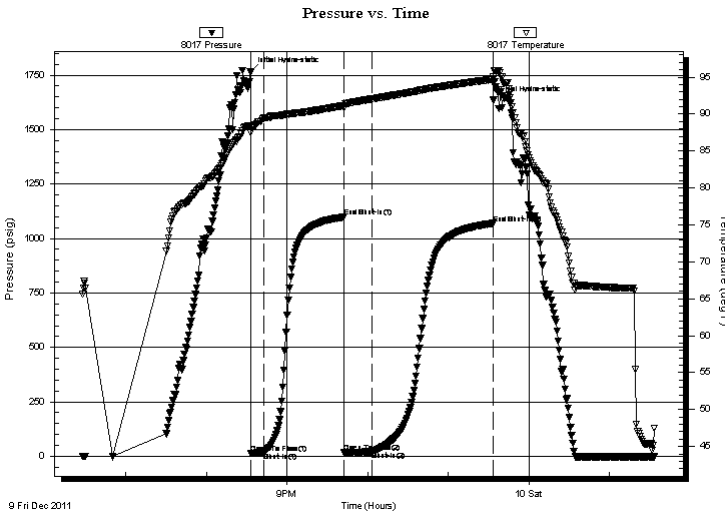
Start Time: 18:28:05 End Time: 01:33:50

Time On Btm: 2011.12.09 @ 20:33:00

Time Off Btm: 2011.12.09 @ 23:33:39

TEST COMMENT: 10 - IF- 1/2" blow
60 - IS- No blow back
20 - FF- 1 1/4" blow
90 - FS- No blow back

PRESSURE SUMMARY



Time (Min.)	Pressure (psig)	Temp (deg F)	Annotation
0	1764.85	88.45	Initial Hydro-static
1	12.55	87.50	Open To Flow (1)
10	17.89	89.47	Shut-In(1)
70	1098.79	91.16	End Shut-In(1)
70	18.87	90.85	Open To Flow (2)
91	21.40	92.04	Shut-In(2)
181	1069.92	94.71	End Shut-In(2)
181	1635.25	95.03	Final Hydro-static

Recovery

Length (ft)	Description	Volume (bbl)
2.00	VSOCWM, 5%W, 10%O, 85%M	0.01

* Recovery from multiple tests

Gas Rates

Choke (inches)	Pressure (psig)	Gas Rate (Mcf/d)



**TRILOBITE
TESTING, INC.**

DRILL STEM TEST REPORT

FLUID SUMMARY

Samuel Gary Jr. & Ass. Inc.

15-12s-17w Ellis

1515 Wynkoop st. Suite 700
Denver CO, 80202

Schmeidler et 1-15

Job Ticket: 46330

DST#: 3

ATTN: Clayton Camozzi

Test Start: 2011.12.09 @ 18:28:00

Mud and Cushion Information

Mud Type: Gel Chem

Cushion Type:

Oil API:

33 deg API

Mud Weight: 9.00 lb/gal

Cushion Length:

ft

Water Salinity:

6000 ppm

Viscosity: 60.00 sec/qt

Cushion Volume:

bbbl

Water Loss: 6.40 in³

Gas Cushion Type:

Resistivity: ohm.m

Gas Cushion Pressure:

psig

Salinity: 4000.00 ppm

Filter Cake: inches

Recovery Information

Recovery Table

Length ft	Description	Volume bbl
2.00	VSOCWM, 5%W, 10%O, 85%M	0.010

Total Length: 2.00 ft Total Volume: 0.010 bbl

Num Fluid Samples: 0

Num Gas Bombs: 0

Serial #:

Laboratory Name:

Laboratory Location:

Recovery Comments: Salinity: .22 @ 40 Degrees = 60000

