

MIDWESTERN EXPLORATION COMPANY

Mary 'B' #2-10

Scale 1:240 (5"=100') Imperial
Measured Depth Log

Well Name: Mary 'B' #2-10
Location: Section 10-T35S-R35W
License Number: API 15-189-22776
Spud Date: 11/14/11
Surface Coordinates: 350' FNL & 330' FWL
Region: Stevens Co, KS
Drilling Completed: 11/22/2011

Bottom Hole Coordinates: 350' FNL & 330' FWL
Ground Elevation (ft): 2,977' K.B. Elevation (ft): 2,989'
Logged Interval (ft): 4,300' To: 6,800' Total Depth (ft): 6,800'
Formation: Mississippian St. Louis
Type of Drilling Fluid: Chemical

Printed by MUD.LOG from WellSight Systems 1-800-447-1534 www.WellSight.com

OPERATOR

Company: Midwestern Exploration Company
Address: 3500 S. Boulevard, Suite #2B
Edmond, OK 73013

GEOLOGIST

Name: Thomas M. Williams
Company: Petroleum Geologist
Address: Wichita, KS

CORE

Contractor:
Core #:
Formation:
Core Interval:
Bit type:
Size:
Coring Time:
From:
To:
Cut:
Recovered:

Formation Tops

	Sample Top	E-Log Top
Base/Heebner Sin	4345 (-1356)	4337 (-1348)
Toronto Lm	4356 (-1367)	4355 (-1366)
Lansing	4458 (-1469)	4456 (-1467)
Marmaton	5229 (-2240)	5214 (-2225)
Cherokee Shale	5586 (-2597)	5570 (-2581)
L. Atoka Lime	5893 (-2904)	5877 (-2888)
Morrow Shale	5927 (-2938)	5911 (-2922)
U. Morrow Sand	5930 (-2941)	5914 (-2925)
L. Morrow Lime	6234 (-3245)	6219 (-3230)
Chester 'C' Lime	6295 (-3306)	6281 (-3292)
Chester 'A' Lime	6406 (-3417)	6392 (-3403)
Chester 'A' Sand	6548 (-3559)	6534 (-3545)
Ste. Genevieve	6657 (-3668)	6640 (-3651)
St. Louis	6735 (-3746)	6720 (-3731)

DSTs

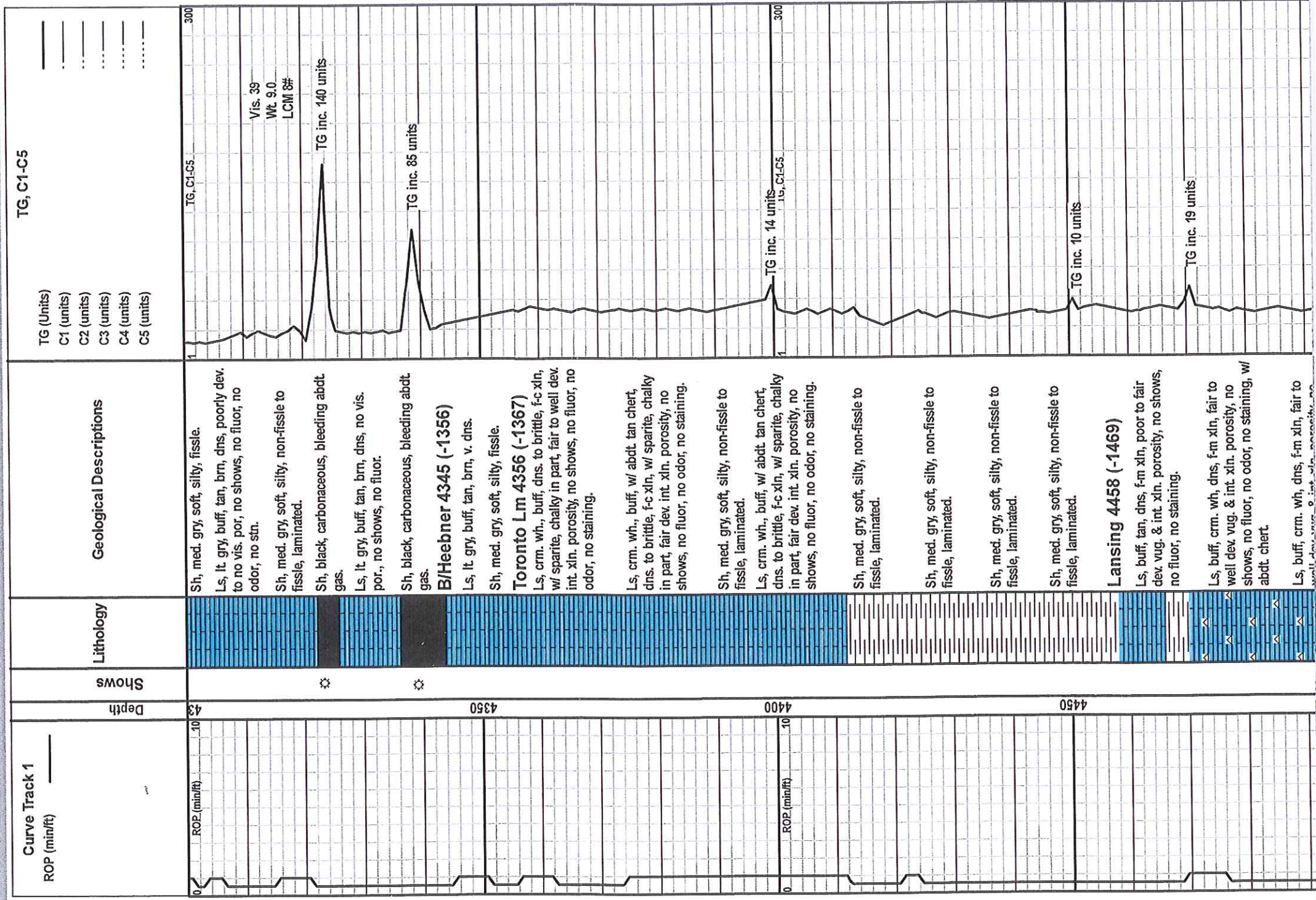
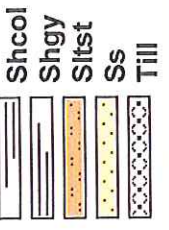
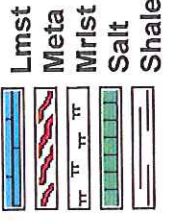
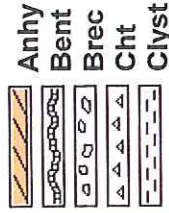
DST #1 6535-6575' Chester 'A' Sand

IHP 3278#
 IFP 49-90# 30"
 ISIP 1839# 60"
 FFP 72-123# 60"
 FSIP 1753# 120"
 FHP 3209#
 IF Strong, Bottom of bucket in 3"
 FF Strong, BOB ASAO, GTS @ shut-in
 Rec: 480' Gas in pipe
 280' Gas cut muddy oil, 20% gas, 75% oil, 5% mud

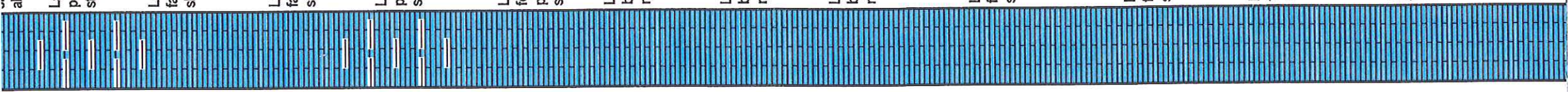
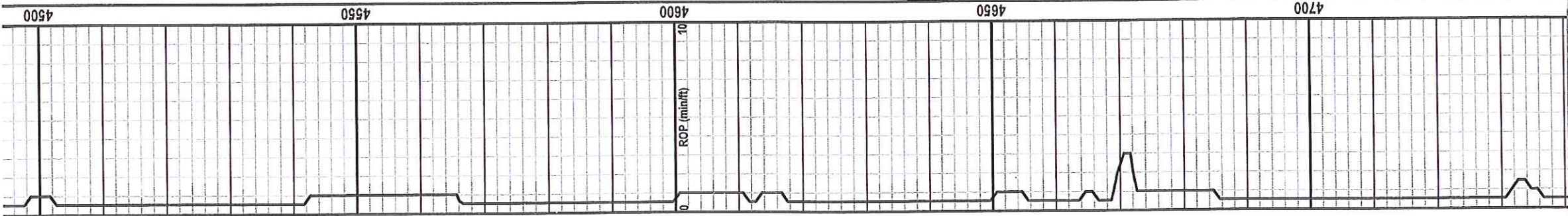
Comments

Due to the shows of gas in the Upper Morrow Sand and the Chester 'B' Lime, and the very good show of oil in the Chester Sand from DST # 1 along with favorable electric log calculations, it was decided to further test the Mary 'B' #2-10 through production casing.

ROCK TYPES



Vis. 39
Wt 9.0
LCM 8#



abdt chert

Ls, med. to drk gry, f. xln, v. dns, no vis. porosity, no shows, no fluor, no odor, no staining.

Ls, buff, crm. wh, f-m xln, foss, poor to fair dev vug. & int xln. porosity, no shows, no fluor, no odor, no staining.

Ls, buff, crm. wh, f-m xln, foss, poor to fair dev vug. & int xln. porosity, no shows, no fluor, no odor, no staining.

Ls, med. to drk gry, f. xln, v. dns, no vis. porosity, no shows, no fluor, no odor, no staining.

Ls, buff, crm. wh, lt gry-wh, f-m xln, foss, poor to fair dev vug. & int xln. porosity, no shows, no fluor, no odor, no staining.

Ls, buff, tan, lt gry, f-m xln, dns. to brittle, fair dev vug. & int xln. porosity, no shows, no fluor, no odor, no staining.

Ls, buff, tan, lt gry, f-m xln, dns. to brittle, fair dev vug. & int xln. porosity, no shows, no fluor, no odor, no staining.

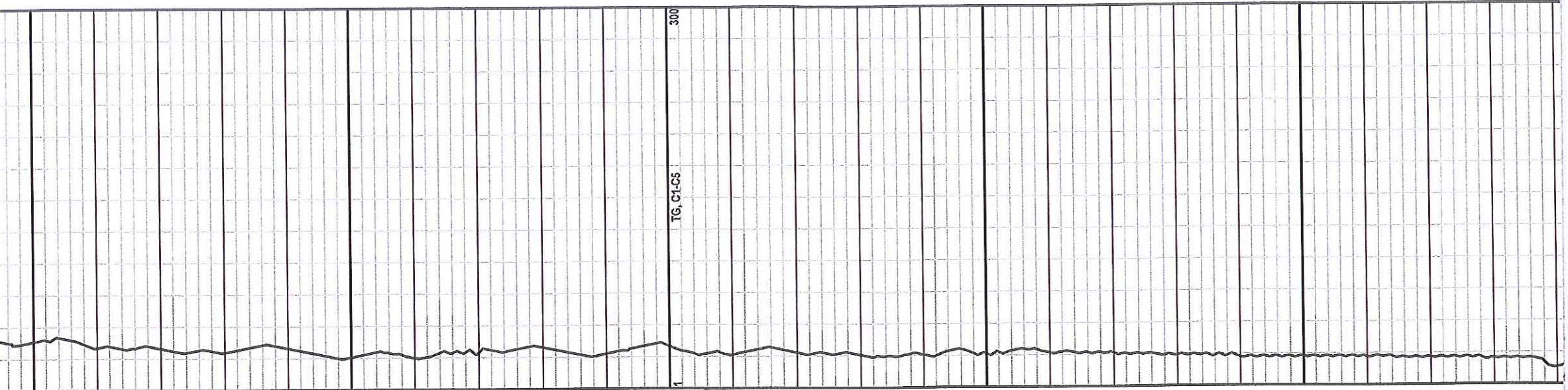
Ls, buff, tan, lt gry, f-m xln, dns. to brittle, fair dev. int xln. & vug. porosity, no shows, no fluor, no odor, no staining.

Ls, buff, crm. wh, gry-wh, dns. to brittle, fair dev. int xln. & vug. porosity, no shows, no fluor, no odor, no staining.

Ls, buff, crm. wh, tan, f-m xln, granular, fair to well dev. int xln. & vug. porosity, no shows, no fluor, no odor, no staining.

Ls, buff, crm. wh, tan, f-m xln, granular, fair to well dev. int xln. & vug. porosity, no shows, no fluor, no odor, no staining.

Ls, buff, crm. wh, tan, f-m xln, granular, fair to well dev. int xln. & vug. porosity,



4750

4800

4850

4900

4950

ROP (min/ft)

10

0

Ls, buff, crm. wh, tan, f-m xln, granular, fair to well dev. int. xln. & vug. porosity, no shows, no fluor, no odor, no staining, chalky.

Ls, buff, crm. wh, tan, f-m xln, granular, fair to well dev. int. xln. & vug. porosity, no shows, no fluor, no odor, no staining, chalky.

Ls, tan, buff, f-m xln, brittle, oolitic, fair dev. oomoldic porosity, no shows, no fluor, no odor, no staining.

Ls, buff, crm, lt gry, f-m xln, dns. to brittle, fair dev. int. xln. & sm. vugular porosity, no shows, no fluor, no odor, no staining.

Ls, tan, gry, v. dns, p. dev. to no vis. porosity, arg. & shaley w/ med. gry shale, no shows, no fluor, no odor, no staining.

Ls, buff, crm, lt gry, f-m xln, dns. to brittle, fair dev. int. xln. & sm. vugular porosity, no shows, no fluor, no odor, no staining.

Sh, med. to drk. gry, fissile, brittle.

Ls, lt. to med. gry, f. xln, v. dns, p. dev. to no vis. porosity, no shows, no fluor, no odor, no staining.

Ls, lt. to med. gry, f. xln, v. dns, p. dev. to no vis. porosity, no shows, no fluor, no odor, no staining.

Ls, lt. to med. gry, f. xln, v. dns, arg. & shaley, p. dev. to no vis. porosity, no shows, no fluor, no odor, no staining, w/ med. gry sh.

Ls, buff, crm, lt. gry, f-m xln, dns. to brittle, fair dev. int. xln. & sm. vugular porosity, no shows, no fluor, no odor, no staining.

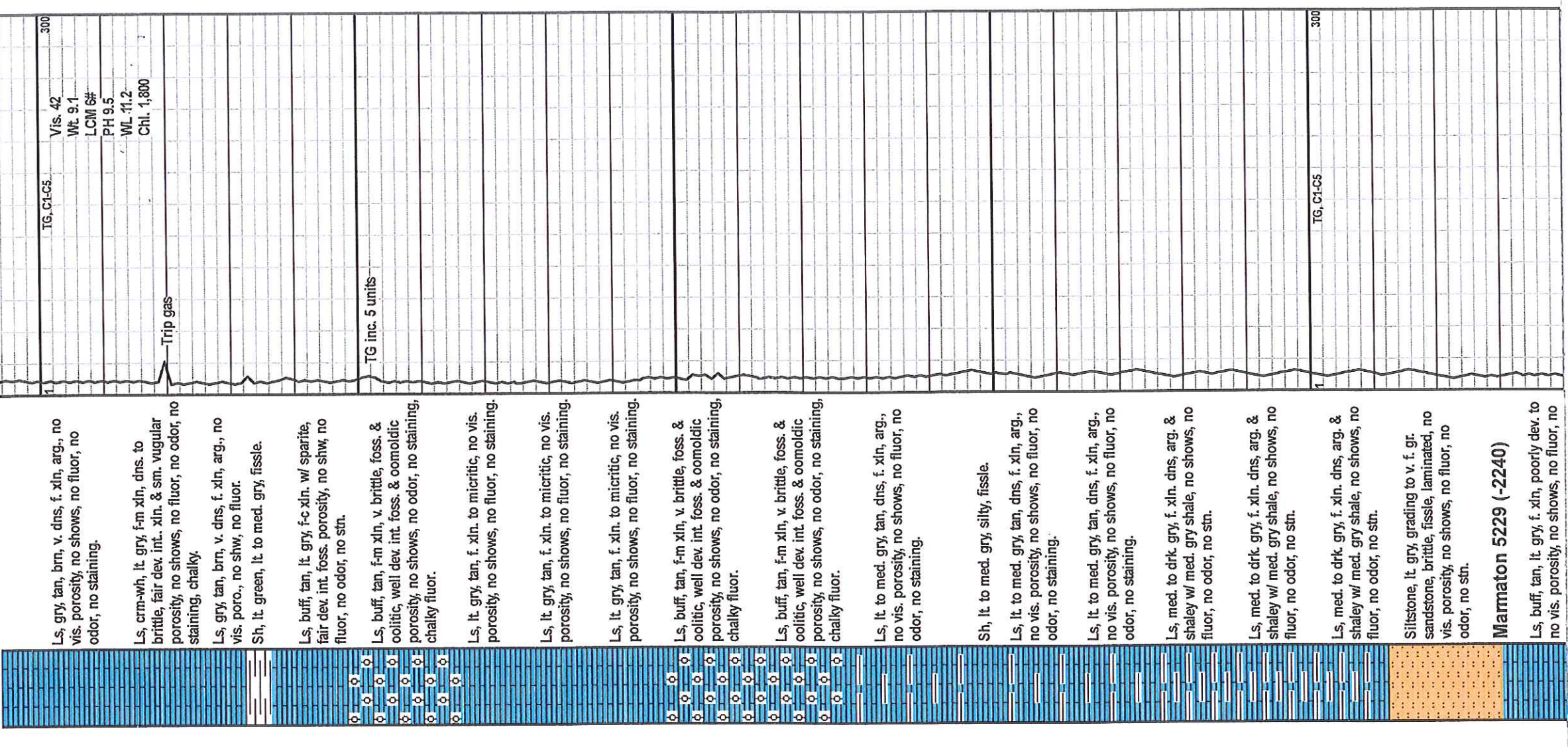
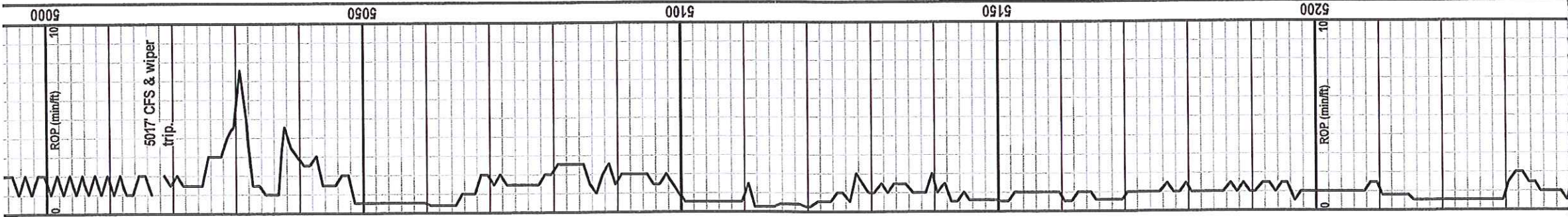
Ls, crm-wh, lt. gry, f-m xln, dns. to brittle, fair dev. int. xln. & sm. vugular porosity, no shows, no fluor, no odor, no staining, chalky.

Ls, tan, lt. gry, v. dns, f. xln, no vis. porosity, no shows, no fluor, no odor, no

Vis. 37
Wt 9.0
LCM #

TG, C1-C5

300



Ls, gry, tan, brn, v. dns, f. xin, arg., no vis. porosity, no shows, no fluor, no odor, no staining.

Ls, crm-wh, lt. gry, f-m xin, dns. to brittle, fair dev. int. xin. & sm. vugular porosity, no shows, no fluor, no odor, no staining, chalky.

Ls, gry, tan, brn, v. dns, f. xin, arg., no vis. poro., no shw, no fluor.

Sh, lt. green, lt. to med. gry, fissle.

Ls, buff, tan, lt. gry, f-c xin. w/ sparite, fair dev. int. foss. porosity, no shw, no fluor, no odor, no stn.

Ls, buff, tan, f-m xin, v. brittle, foss. & oolitic, well dev. int. foss. & oomoldic porosity, no shows, no odor, no staining, chalky fluor.

Ls, lt. gry, tan, f. xin. to micritic, no vis. porosity, no shows, no fluor, no staining.

Ls, lt. gry, tan, f. xin. to micritic, no vis. porosity, no shows, no fluor, no staining.

Ls, lt. gry, tan, f. xin. to micritic, no vis. porosity, no shows, no fluor, no staining.

Ls, buff, tan, f-m xin, v. brittle, foss. & oolitic, well dev. int. foss. & oomoldic porosity, no shows, no odor, no staining, chalky fluor.

Ls, buff, tan, f-m xin, v. brittle, foss. & oolitic, well dev. int. foss. & oomoldic porosity, no shows, no odor, no staining, chalky fluor.

Ls, lt. to med. gry, tan, dns, f. xin, arg., no vis. porosity, no shows, no fluor, no odor, no staining.

Sh, lt. to med. gry, silty, fissle.

Ls, lt. to med. gry, tan, dns, f. xin, arg., no vis. porosity, no shows, no fluor, no odor, no staining.

Ls, lt. to med. gry, tan, dns, f. xin, arg., no vis. porosity, no shows, no fluor, no odor, no staining.

Ls, med. to drk. gry, f. xin. dns, arg. & shaley w/ med. gry shale, no shows, no fluor, no odor, no stn.

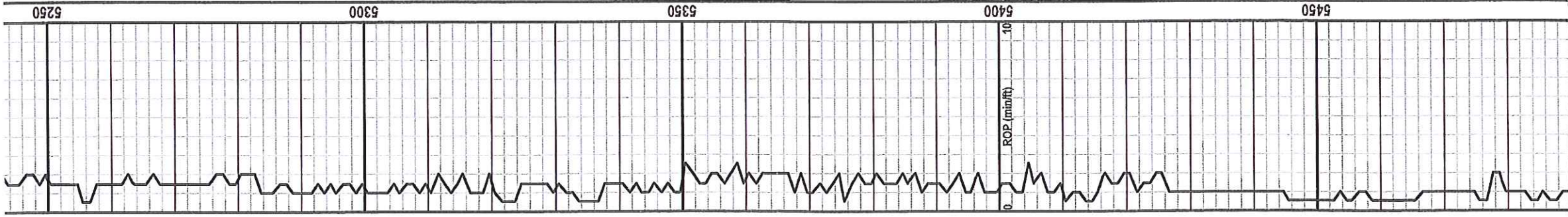
Ls, med. to drk. gry, f. xin. dns, arg. & shaley w/ med. gry shale, no shows, no fluor, no odor, no stn.

Ls, med. to drk. gry, f. xin. dns, arg. & shaley w/ med. gry shale, no shows, no fluor, no odor, no stn.

Siltstone, lt. gry, grading to v. f. gr. sandstone, brittle, fissle, laminated, no vis. porosity, no shows, no fluor, no odor, no stn.

Marmaton 5229 (-2240)

Ls, buff, tan, lt. gry, f. xin, poorly dev. to no vis. porosity, no shows, no fluor, no



5250

5300

5350

5400

5450

Sh, buff, tan, lt. gry, f. xln, poorly dev. to no vis. porosity, no shows, no fluor, no odor, no staining.

Sh, lt. to med. gry, silty, fissile.

Ls, buff, tan, f. xln, dns, poorly dev. to no vis. porosity, no shows, no fluor, no odor, no staining.

Ls, buff, tan, f. xln, dns, poorly dev. to no vis. porosity, no shows, no fluor, no odor, no staining.

Ls, med. to drk. gry, f. xln. dns, arg. & shaley w/ med. gry shale, no shows, no fluor, no odor, no stn.

Ls, med. to drk. gry, f. xln. dns, arg. & shaley w/ med. gry shale, no shows, no fluor, no odor, no stn.

Sh, med. gry, silty, calcareous.

Ls, med. to drk. gry, f. xln. dns, arg. & shaley w/ med. gry shale.

Sh, med. gry, silty, calcareous.

Ls, lt. to med. gry, tan, f. xln, v. dns, no vis. porosity, no shows, no fluor, no odor, no staining.

Ls, lt. to med. gry, tan, f. xln, v. dns, no vis. porosity, no shows, no fluor, no odor, no staining.

Ls, buff, tan, lt. gry, f-m xln, dns, poorly dev. int. xln. porosity, no shows, no fluor, no odor, no stn.

Ls, buff, tan, lt. gry, f-m xln, dns, poorly dev. int. xln. porosity, no shows, no fluor, no odor, no stn.

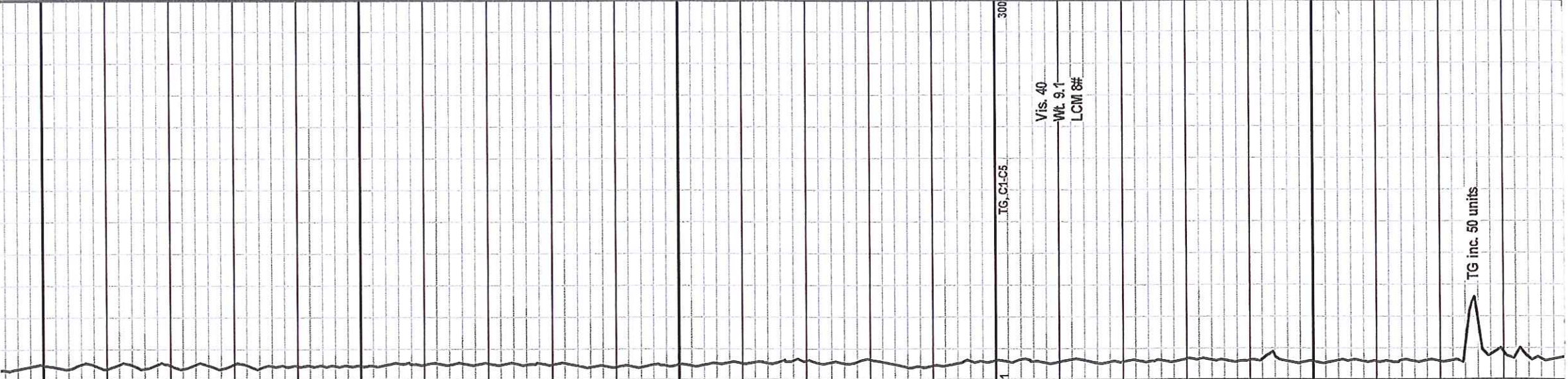
Ls, buff, tan, lt. gry, f-m xln, dns, p-f dev. int. xln. porosity, no shows, no fluor, no odor, no stn.

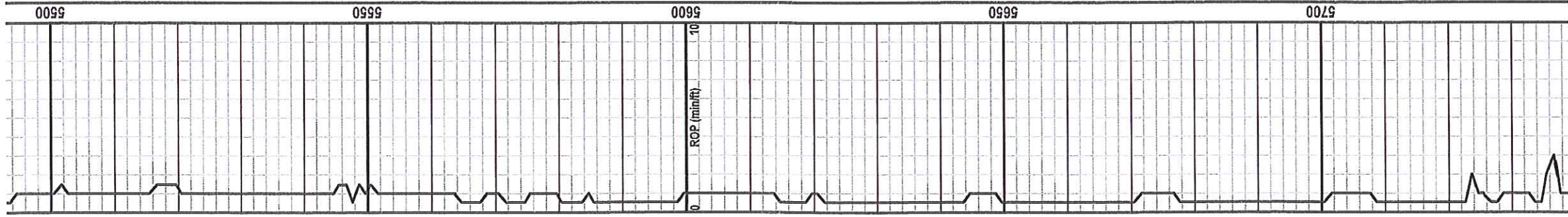
Ls, crm. wh, buff, f-m xln, dns, p-f dev. int. xln. porosity, no shows, no fluor, no odor, no stn., chalky.

Ls, crm. wh, buff, f-m xln, dns, p-f dev. int. xln. porosity, no shows, no fluor, no odor, no stn., chalky.

Sh, black carb., bleeding gas.

Ls, med. to drk. gry, f. xln. dns, arg. & shaley w/ med. gry shale, no shows, no fluor, no odor, no stn.





5500

5550

5600

5650

5700

ROP (min/ft)

0

10

Ls, lt. to med. gry, tan, f. xln, dns, no vis. porosity, no shows, no fluor, no odor, no staining.

Ls, lt. to med. gry, tan, f. xln, dns, no vis. porosity, no shows, no fluor, no odor, no staining.

Ls, lt. to med. gry, tan, f. xln, dns, no vis. porosity, no shows, no fluor, no odor, no staining.

Ls, med. to drk. gry, f. xln. dns, arg. & shaley w/ med. gry shale, no shows, no fluor, no odor, no strn.

Cherokee Sh 5586 (-2597)

Sh, black carbonaceous, bleeding abdt gas.

Ls, med. to drk. gry, dns, f. xln, arg. & shaley, no vis. porosity, no shows, no fluoro, no odor, no strn.

Ls, med. to drk. gry, dns, f. xln, arg. & shaley, no vis. porosity, no shows, no fluoro, no odor, no strn.

Ls, med. to drk. gry, dns, f. xln, arg. & shaley, no vis. porosity, no shows, no fluoro, no odor, no strn.

Sh, med. to drk. gry, black, carb.

Sh, black carb., bleeding gas.

Sh, med. to drk. gry, black, carb.

Sh, med. to drk. gry, black, carb.

Ls, med. to drk. gry, dns, f. xln, arg. & shaley, no vis. porosity, no shows, no fluoro, no odor, no strn.

Sh, med. to drk. gry, black, carb.

Sh, med. to drk. gry, dns, f. xln, arg. & shaley, no vis. porosity, no shows, no fluoro, no odor, no strn.

Sh, med. to drk. gry, black, carb.

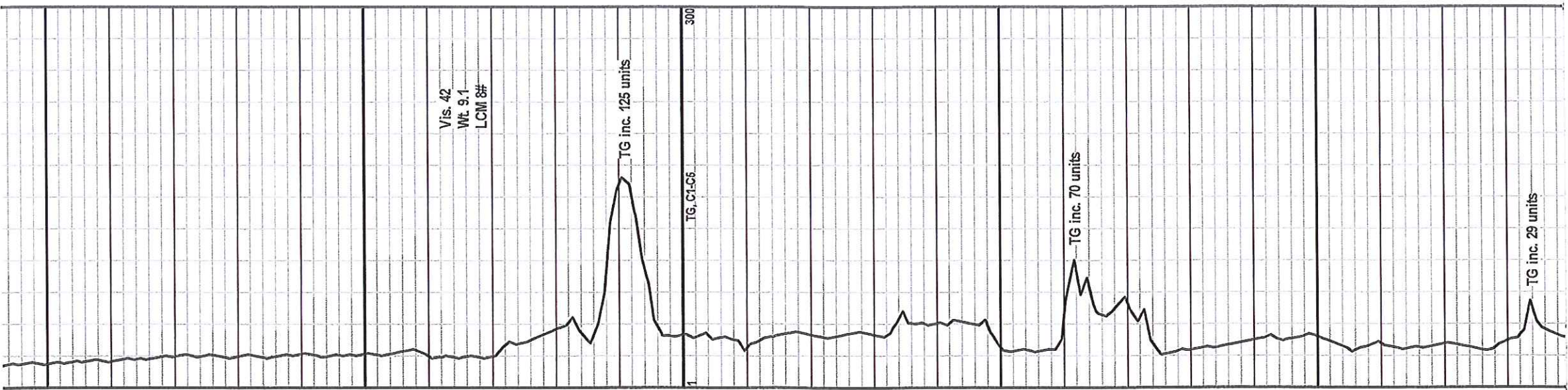
Ls, med. to drk. gry, dns, f. xln, arg. & shaley, no vis. porosity, no shows, no fluoro, no odor, no strn.

Sh, med. to drk. gry, black, carb.

Ls, med. to drk. gry, dns, f. xln, arg. & shaley, no vis. porosity, no shows, no fluoro, no odor, no strn.

Sh, med. to drk. gry, black, carb.

Ls, tan, brn, gry, f. xln, v. dns



5500

5550

5600

5650

5700

TG (min/ft)

0

300

Ls, lt. to med. gry, tan, f. xln, dns, no vis. porosity, no shows, no fluor, no odor, no staining.

Ls, lt. to med. gry, tan, f. xln, dns, no vis. porosity, no shows, no fluor, no odor, no staining.

Ls, lt. to med. gry, tan, f. xln, dns, no vis. porosity, no shows, no fluor, no odor, no staining.

Ls, med. to drk. gry, f. xln. dns, arg. & shaley w/ med. gry shale, no shows, no fluor, no odor, no strn.

Cherokee Sh 5586 (-2597)

Sh, black carbonaceous, bleeding abdt gas.

Ls, med. to drk. gry, dns, f. xln, arg. & shaley, no vis. porosity, no shows, no fluoro, no odor, no strn.

Ls, med. to drk. gry, dns, f. xln, arg. & shaley, no vis. porosity, no shows, no fluoro, no odor, no strn.

Ls, med. to drk. gry, dns, f. xln, arg. & shaley, no vis. porosity, no shows, no fluoro, no odor, no strn.

Sh, med. to drk. gry, black, carb.

Sh, black carb., bleeding gas.

Sh, med. to drk. gry, black, carb.

Sh, med. to drk. gry, black, carb.

Ls, med. to drk. gry, dns, f. xln, arg. & shaley, no vis. porosity, no shows, no fluoro, no odor, no strn.

Sh, med. to drk. gry, black, carb.

Sh, med. to drk. gry, dns, f. xln, arg. & shaley, no vis. porosity, no shows, no fluoro, no odor, no strn.

Sh, med. to drk. gry, black, carb.

Ls, med. to drk. gry, dns, f. xln, arg. & shaley, no vis. porosity, no shows, no fluoro, no odor, no strn.

Sh, med. to drk. gry, black, carb.

Ls, med. to drk. gry, dns, f. xln, arg. & shaley, no vis. porosity, no shows, no fluoro, no odor, no strn.

Sh, med. to drk. gry, black, carb.

Ls, tan, brn, gry, f. xln, v. dns

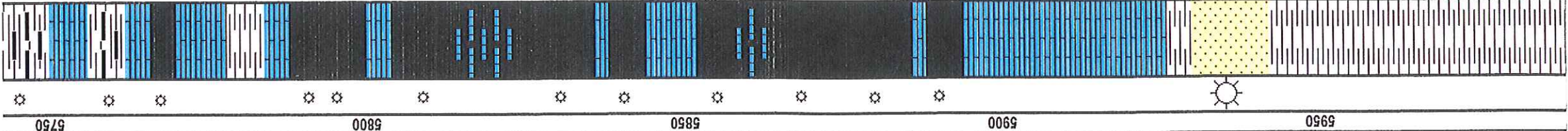
Vis. 42
Wt. 9.1
LCM 8#

TG inc. 125 units

TG. C1-C6

TG inc. 70 units

TG inc. 29 units



Sh, med. to drk. gry, black, carb.

Ls, tan, brn, gry, f. xln, v. dns, no vis. porosity, no shows, no fluor.

Sh, black carb., bleeding gas.

Ls, tan, brn, gry, f. xln, v. dns,

Sh, black carb., bleeding gas.

Ls, tan, brn, gry, f. xln, v. dns, no vis. porosity, no shows, no fluor.

Sh, med. to drk. gry, black, carb.

Ls, tan, brn, gry, f. xln, v. dns

Sh, black carb., bleeding gas.

Ls, brn, f. xln, micritic, no shows.

Sh, black carb., bleeding gas.

Ls, brn, f. xln, micritic, no shows.

Sh, black carb., bleeding gas.

Ls, brn, f. xln, micritic, no shows.

Sh, black carb., bleeding gas.

Ls, brn, f. xln, micritic, no shows.

Sh, black carb., bleeding gas.

Ls, brn, f. xln, micritic, no shows.

Sh, black carb., bleeding gas.

Ls, brn, f. xln, micritic, no shows.

Sh, black carb., bleeding gas.

Ls, brn, f. xln, micritic, no shows.

Sh, black carb., bleeding gas.

Ls, tan, brn, gry, f. xln. to micritic, no vis. porosity, no shows, no fluor, no odor, no stn, tr. pyrite.

Ls, tan, brn, gry, f. xln. to micritic, no vis. porosity, no shows, no fluor, no odor, no stn, tr. pyrite.

Morrow Sh 5927 (-2938)

U. Mrw. Sd 5930 (-2941)
 SS, wh, vf. gr, silty, calcareous, p. dev. int. gr. porosity, fair shw. gas, no fluor, fair odor, no staining.

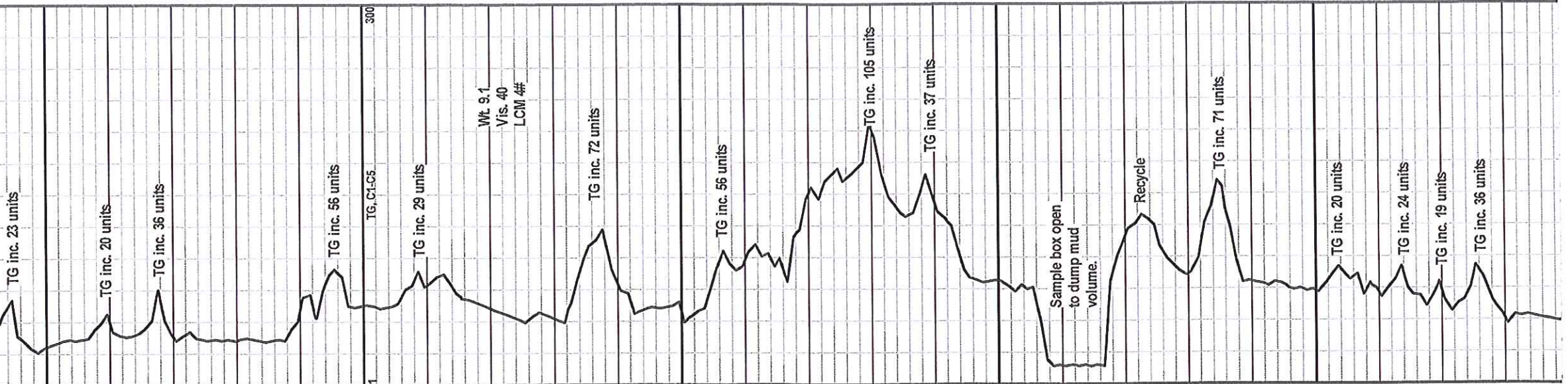
Sh, med. to drk. gry, silty, carb. laminations, fissile blades to blocky, some pyrite.

Sh, lt. to drk. gry, silty, micaceous, laminated, fissile.

Sh, med. gry, silty, fissile, tr. pyrite.

Sh, med. to drk. gry, silty, carb. laminations, fissile blades to blocky, some pyrite.

Sh, lt. to drk. gry, silty, micaceous.

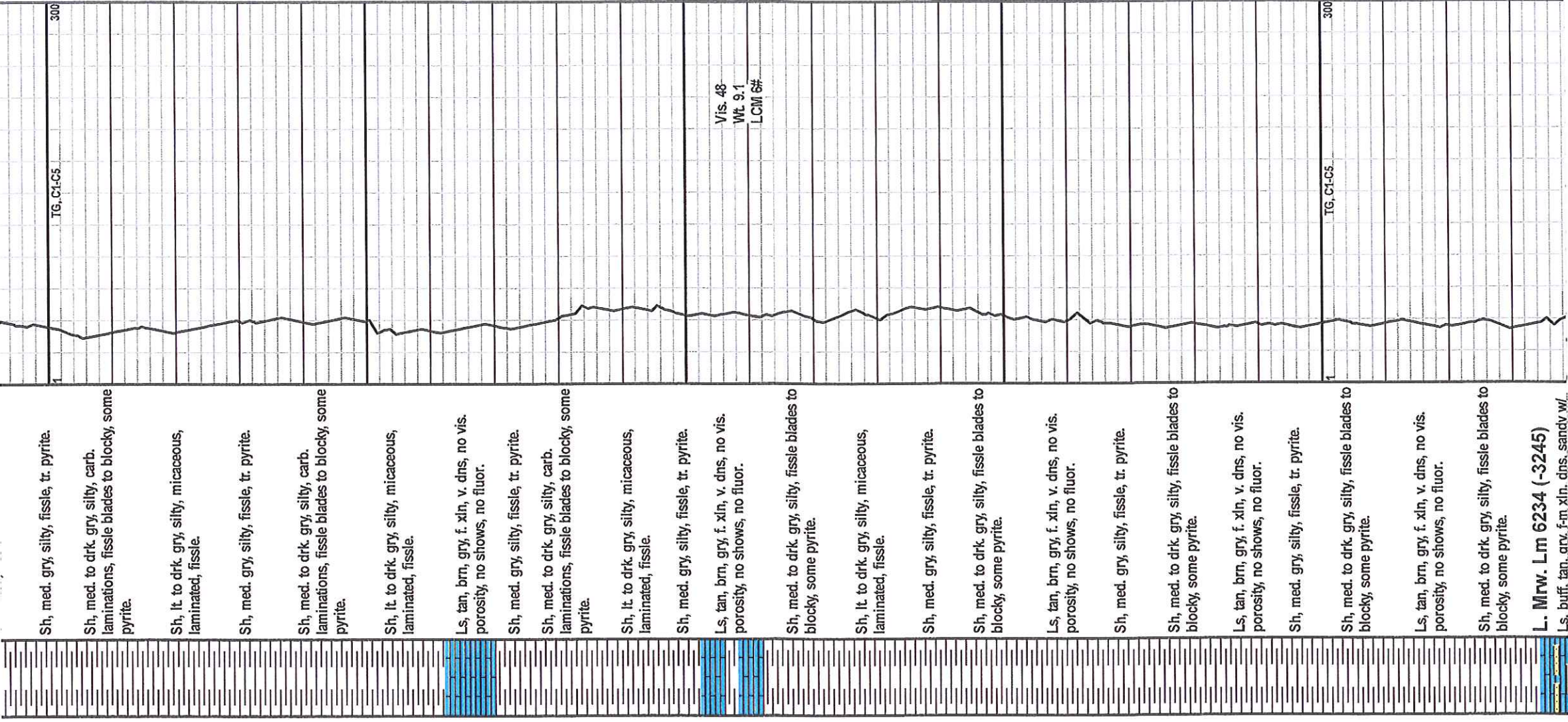
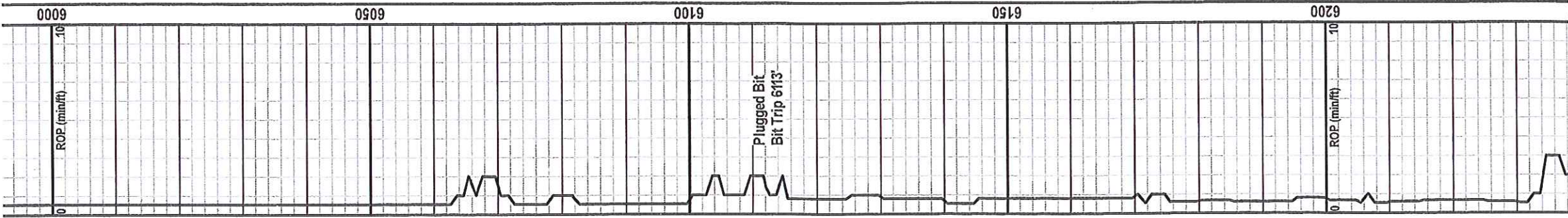


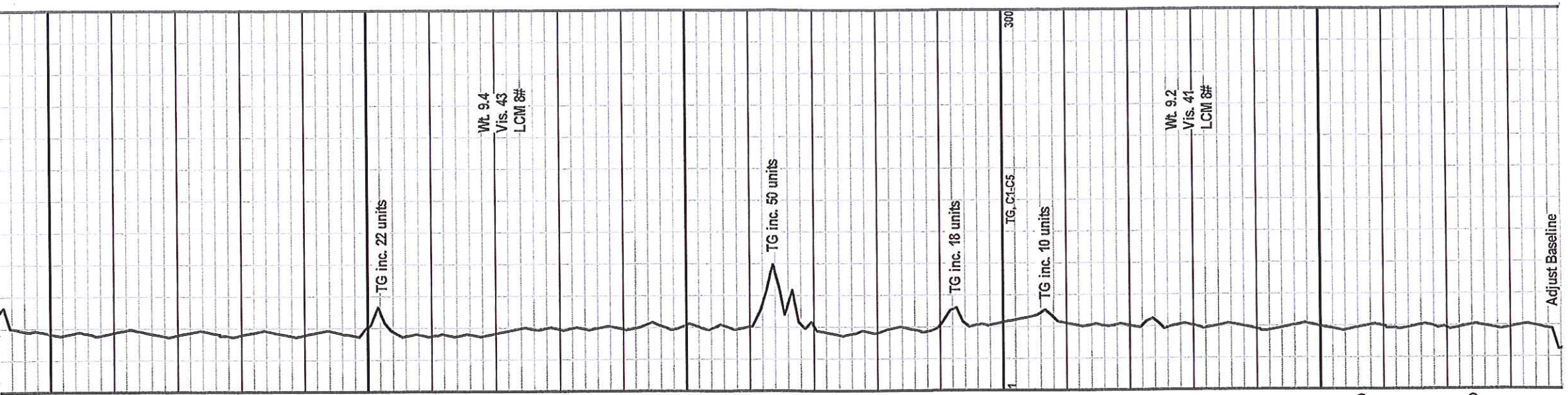
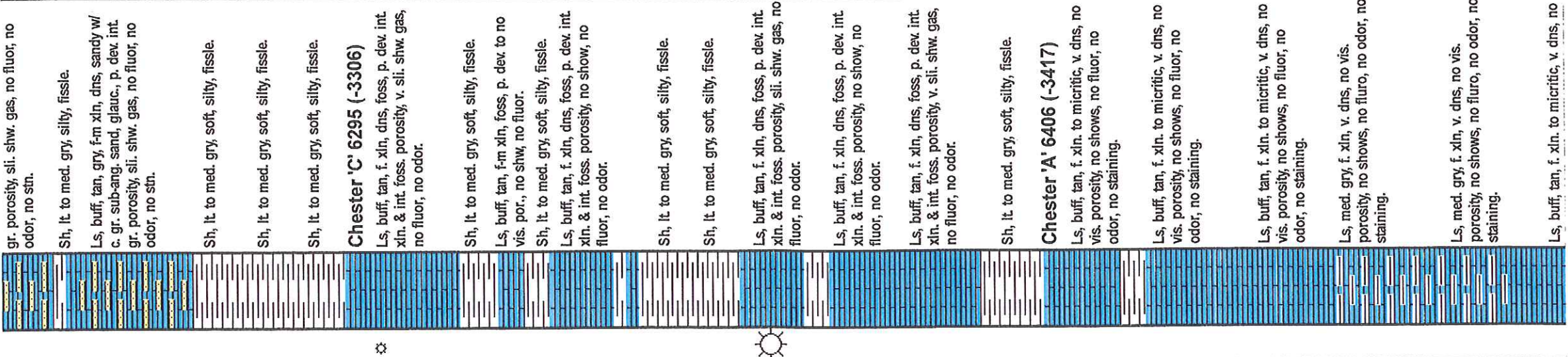
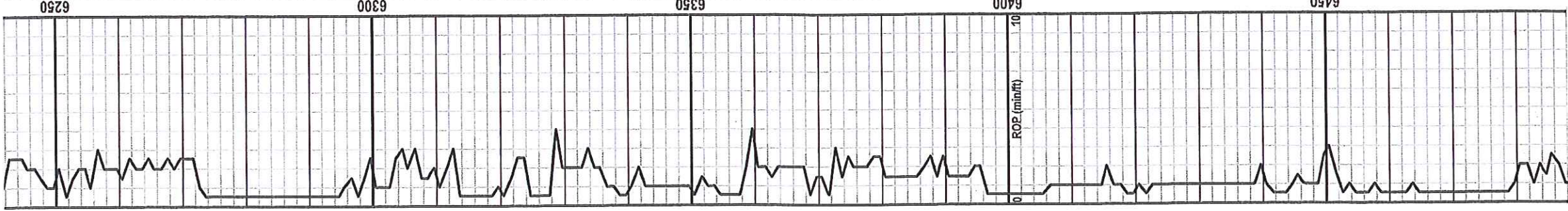
Wt 9.1
 Vis. 40
 LCM #

Sample box open
 to dump mud
 volume.

Recycle

CFS @ 5940'





gr. porosity, sli. shw. gas, no fluor, no odor, no stn.

Sh, lt to med. gry, silty, fissle.

Ls, buff, tan, gry, f-m xln, dns, sandy w/ c. gr. sub-ang. sand, glauc., p. dev. int. gr. porosity, sli. shw. gas, no fluor, no odor, no stn.

Sh, lt to med. gry, soft, silty, fissle.

Sh, lt to med. gry, soft, silty, fissle.

Sh, lt to med. gry, soft, silty, fissle.

Chester 'C' 6295 (-3306)
Ls, buff, tan, f. xln, dns, foss, p. dev. int. xln. & int. foss. porosity, v. sli. shw. gas, no fluor, no odor.

Sh, lt to med. gry, soft, silty, fissle.

Ls, buff, tan, f-m xln, foss, p. dev. to no vis. por., no shw, no fluor.

Sh, lt to med. gry, soft, silty, fissle.

Ls, buff, tan, f. xln, dns, foss, p. dev. int. xln. & int. foss. porosity, no show, no fluor, no odor.

Sh, lt to med. gry, soft, silty, fissle.

Sh, lt to med. gry, soft, silty, fissle.

Ls, buff, tan, f. xln, dns, foss, p. dev. int. xln. & int. foss. porosity, sli. shw. gas, no fluor, no odor.

Ls, buff, tan, f. xln, dns, foss, p. dev. int. xln. & int. foss. porosity, no show, no fluor, no odor.

Ls, buff, tan, f. xln, dns, foss, p. dev. int. xln. & int. foss. porosity, v. sli. shw. gas, no fluor, no odor.

Sh, lt to med. gry, soft, silty, fissle.

Chester 'A' 6406 (-3417)
Ls, buff, tan, f. xln. to micritic, v. dns, no vis. porosity, no shows, no fluor, no odor, no staining.

Ls, buff, tan, f. xln. to micritic, v. dns, no vis. porosity, no shows, no fluor, no odor, no staining.

Ls, buff, tan, f. xln. to micritic, v. dns, no vis. porosity, no shows, no fluor, no odor, no staining.

Ls, med. gry, f. xln, v. dns, no vis. porosity, no shows, no fluoro, no odor, no staining.

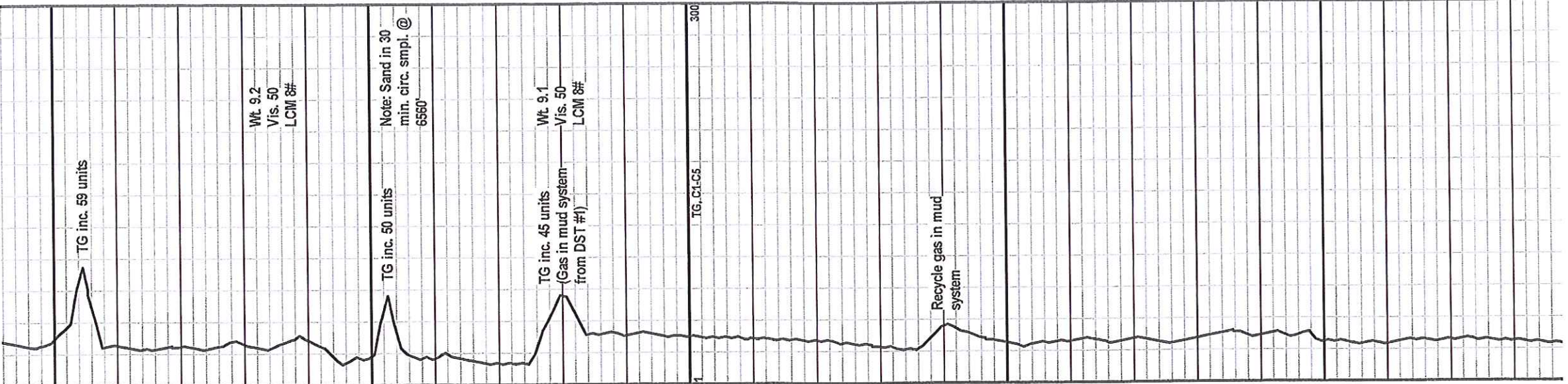
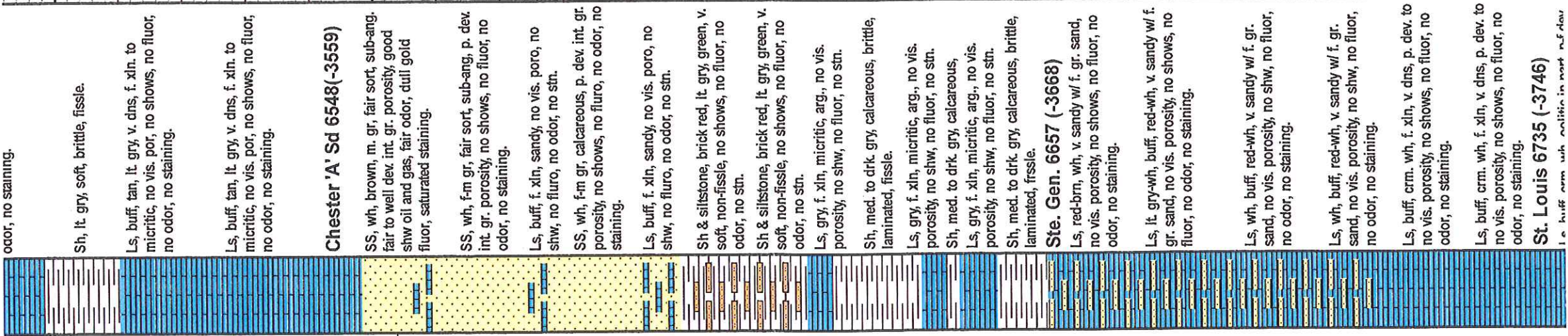
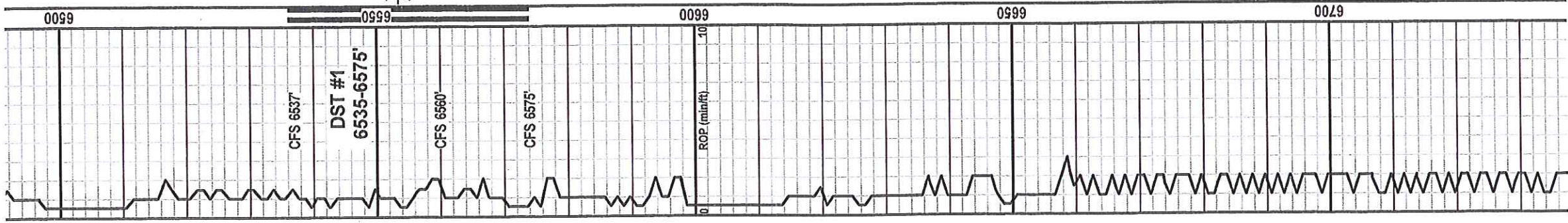
Ls, med. gry, f. xln, v. dns, no vis. porosity, no shows, no fluoro, no odor, no staining.

Ls, buff, tan, f. xln. to micritic, v. dns, no

Wt. 9.4
Vis. 43
LCM 8#

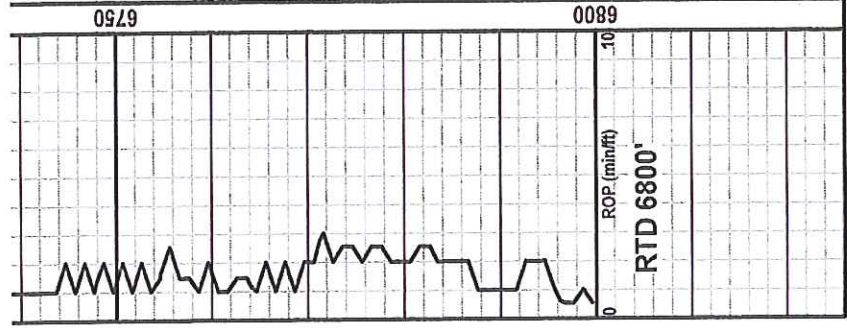
Wt. 9.2
Vis. 41
LCM 8#

Adjust Baseline



odor, no staining.

Ls buff crm wh calcitic in part of flow



int. xln. porosity, no shows, no fluor, no odor, no staining.
 Ls, lt gry. f. xln, w/ abdt. small oolites, no vis. porosity, no shw, no fluor, no odor, no staining.
 Ls, crm. wh, buff, f-m xln, oolitic, p-f dev. int. foss. & int. xln. porosity, no shows, no fluoro, no odor, no staining.
 Ls, buff, f. gr. abdt. small oolites, no vis. porosity, no shows, no fluor, no odor, no staining, w/ fresh sharp chert
 Ls, crm. wh, buff, f-m xln, chalky, v. oolitic, fair to well dev. int. foss & int. xln. porosity, no shows, no fluor, no odor, no staining.

