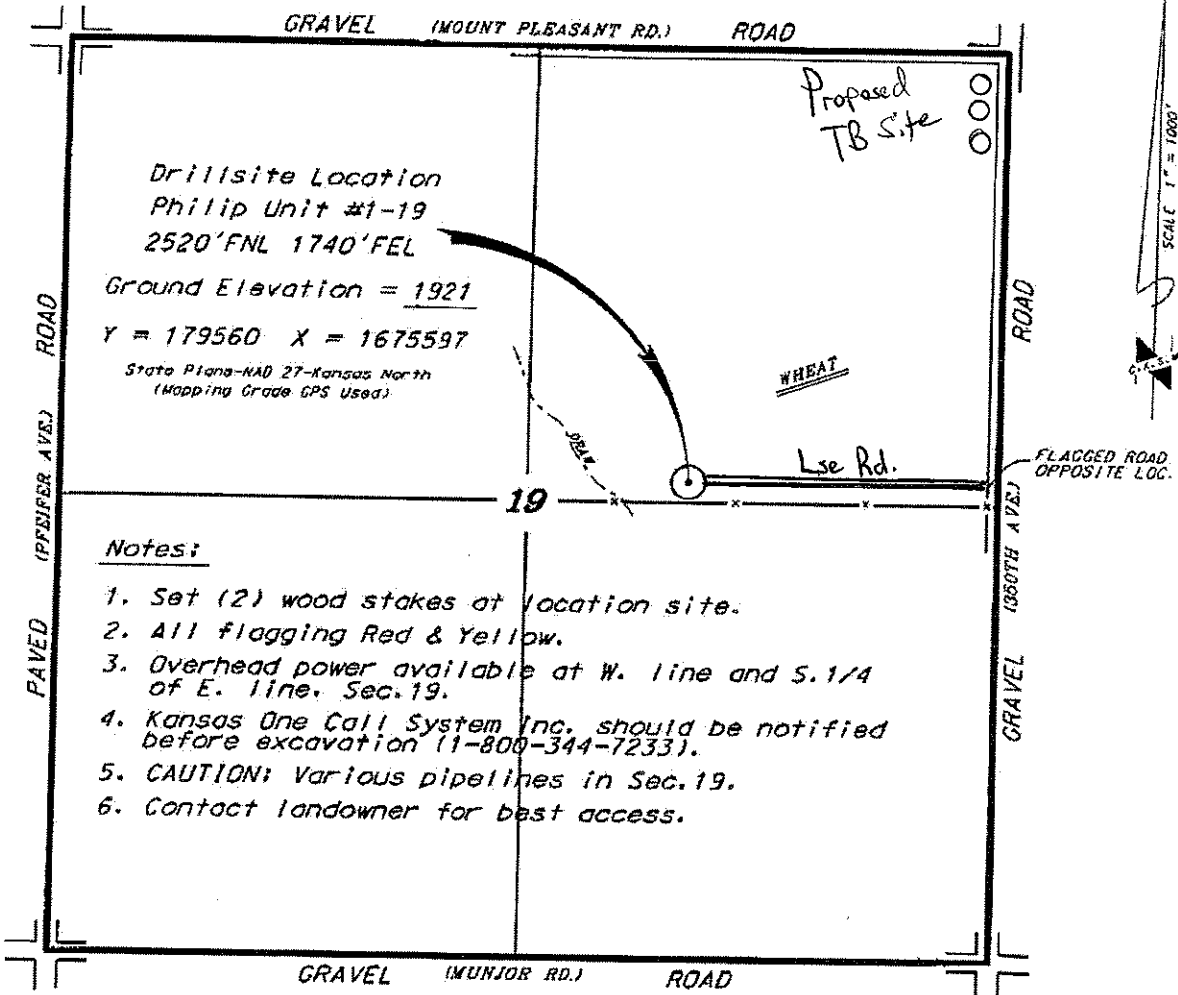


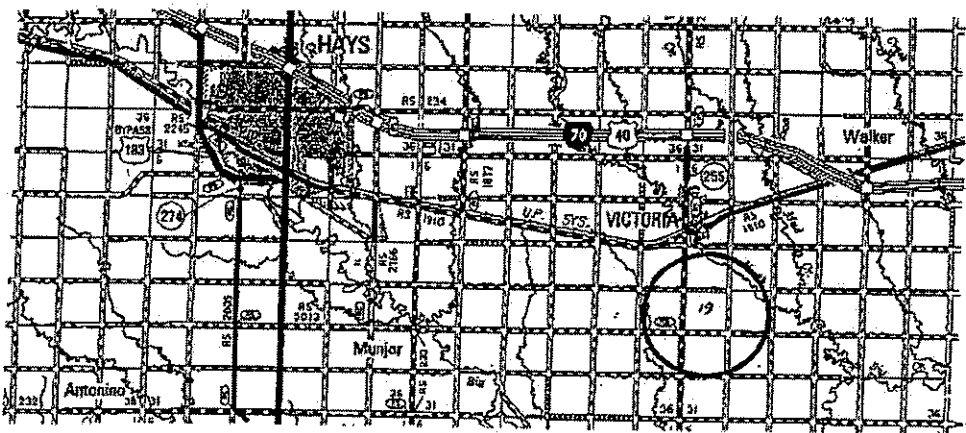
MURFIN DRILLING COMPANY, INC.
PHILIP LEASE
NE. 1/4, SECTION 19, T14S, R16W
ELLIS COUNTY, KANSAS



*Ingress and egress to location as shown on this plot is for usage only and may not be legally gained for public use. Contact landowner, tenant and county road department for access.

Notes:

1. Set (2) wood stakes at location site.
2. All flagging Red & Yellow.
3. Overhead power available at W. line and S. 1/4 of E. line, Sec. 19.
4. Kansas One Call System Inc. should be notified before excavation (1-800-344-7233).
5. CAUTION: Various pipelines in Sec. 19.
6. Contact landowner for best access.



* Controlling data is based upon the best maps and photographs available to us and upon a regular section of land containing 640 acres.
 * Coordinates Section lines were determined using the normal standard of care of oilfield surveyors operating in the state of Kansas. The section corners, which establish the precise section lines, were not necessarily located, and the exact location of the drillsite location in the section is not guaranteed. Therefore, the operator securing this service and accepting this plot and all other parties relying thereon agree to hold Central Kansas Oilfield Services, Inc., its officers and employees harmless from all losses, costs and expenses and said entities released from any liability from intentional or consequential damages.
 * Elevations derived from National Geodetic Vertical Datum.

Date March 16, 2012

CENTRAL KANSAS OILFIELD SERVICES, INC. (620)792-1977