



**SUPERIOR**  
Hays,  
Kansas

**MICRO**  
LOG

Company OIL PRODUCERS INC. OF KANSAS  
Well GRAY #1-23  
Field WILMORE  
County COMANCHE  
State KANSAS

Company OIL PRODUCERS INC. OF KANSAS  
Well GRAY #1-23  
Field WILMORE  
County COMANCHE State KANSAS

Location: API # : 15-033-21597-0000  
2310' FSL & 2310' FEL  
NW - NW - SE  
SEC 23 TWP 31S RGE 18W  
Permanent Datum GROUND LEVEL Elevation 2122  
Log Measured From KELLY BUSHING 13' A.G.L.  
Drilling Measured From KELLY BUSHING  
Other Services  
CDL/CNL  
PE/DIL  
Elevation  
K.B. 2135  
D.F. 2133  
G.L. 2122

Date	11/1/11
Run Number	TWO
Depth Driller	5900
Depth Logger	5902
Bottom Logged Interval	5900
Top Log Interval	3900
Casing Driller	8 5/8" @ 903'
Casing Logger	905'
Bit Size	7 7/8"
Type Fluid in Hole	CHEMICAL MUD
Density / Viscosity	9.0/59
pH / Fluid Loss	10.5/8.8
Source of Sample	FLOWLINE
Rin @ Meas. Temp	0.85 @ 75F
Rmf @ Meas. Temp	0.64 @ 75F
Rmc @ Meas. Temp	1.02 @ 75F
Source of Rmf / Rmc	MEASUREMENT
Rin @ BHT	0.48 @ 133F
Time Circulation Stopped	2 HOURS
Time Logger on Bottom	
Maximum Recorded Temperature	133F
Equipment Number	0836
Location	HAYS, KANSAS
Recorded By	JEFF GRONEMEG
Witnessed By	STEVE VANBUSKIRK

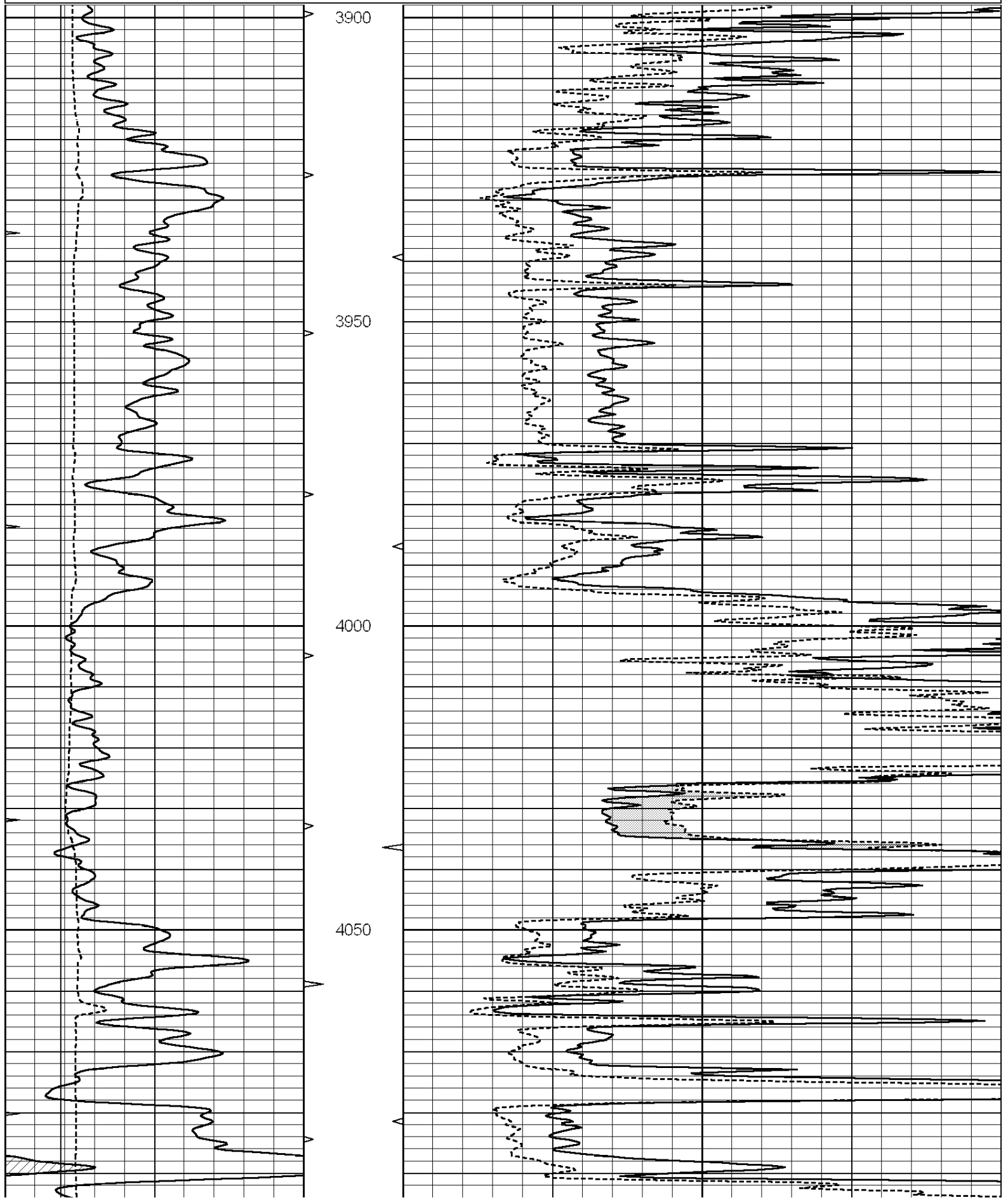
<<< Fold Here >>>

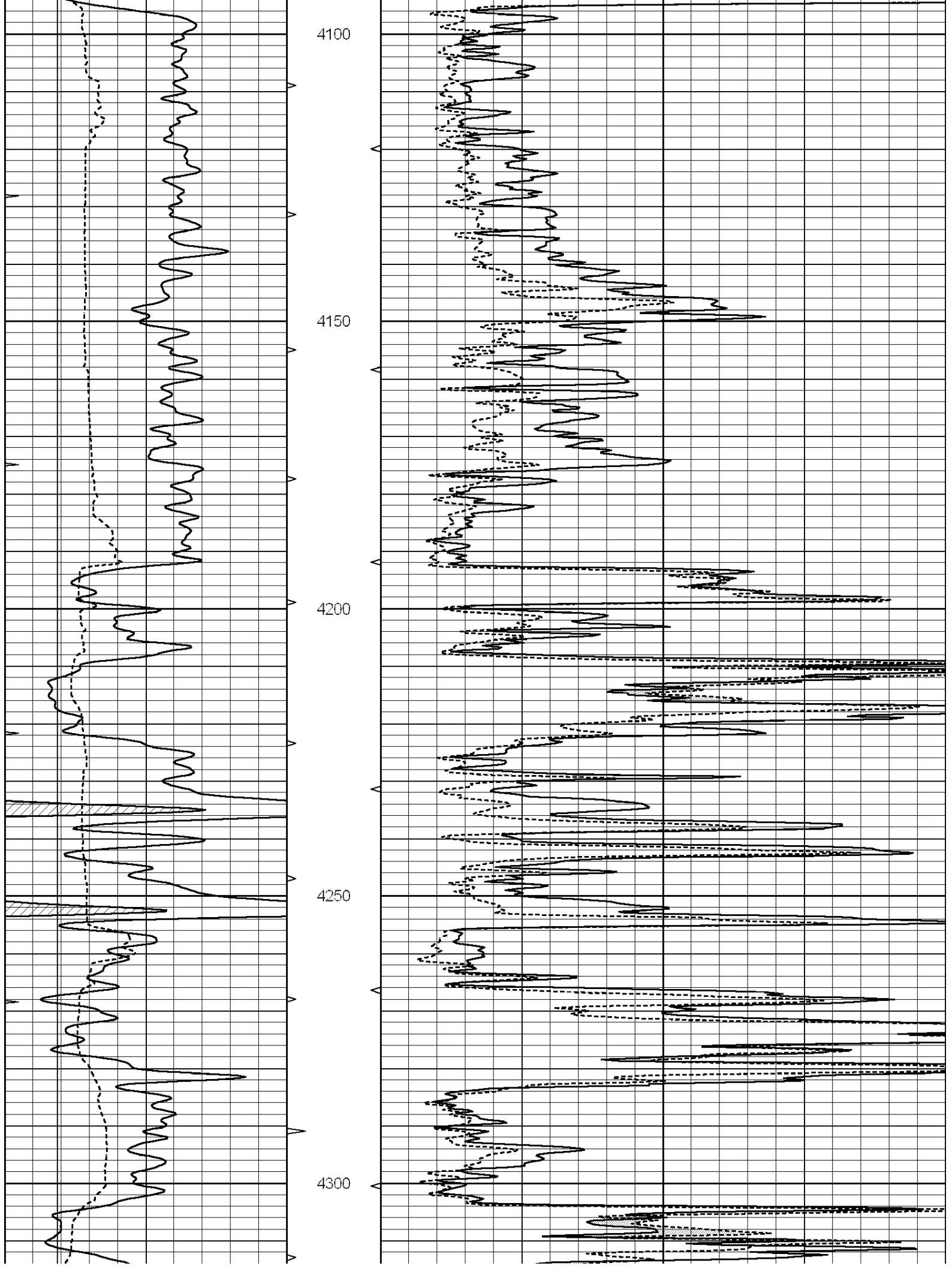
All interpretations are opinions based on inferences from electrical or other measurements and we cannot and do not guarantee the accuracy or correctness of any interpretation, and we shall not, except in the case of gross or willful negligence on our part, be liable or responsible for any loss, costs, damages, or expenses incurred or sustained by anyone resulting from any interpretation made by any of our officers, agents or employees. These interpretations are also subject to our general terms and conditions set out in our current Price Schedule.

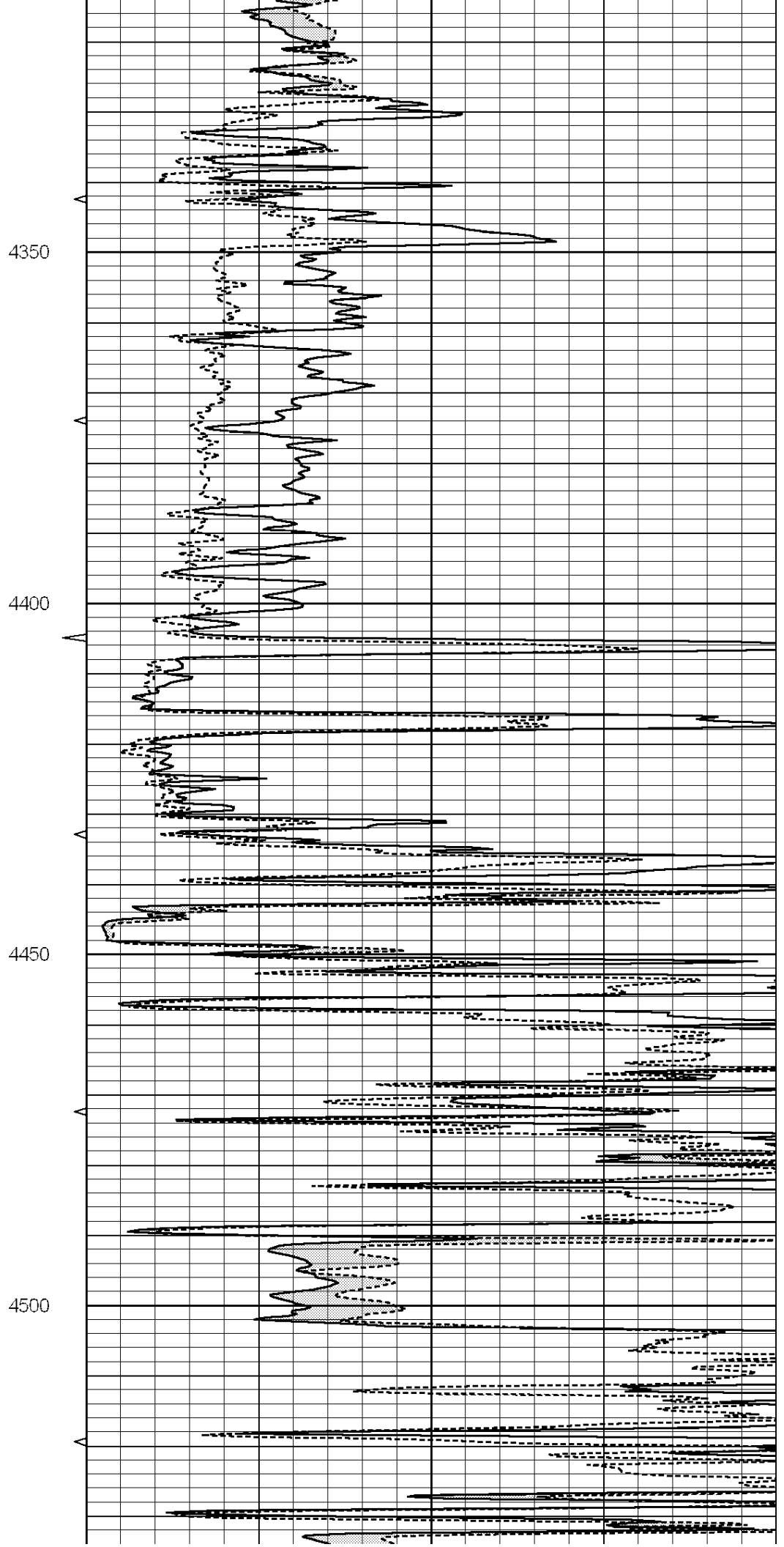
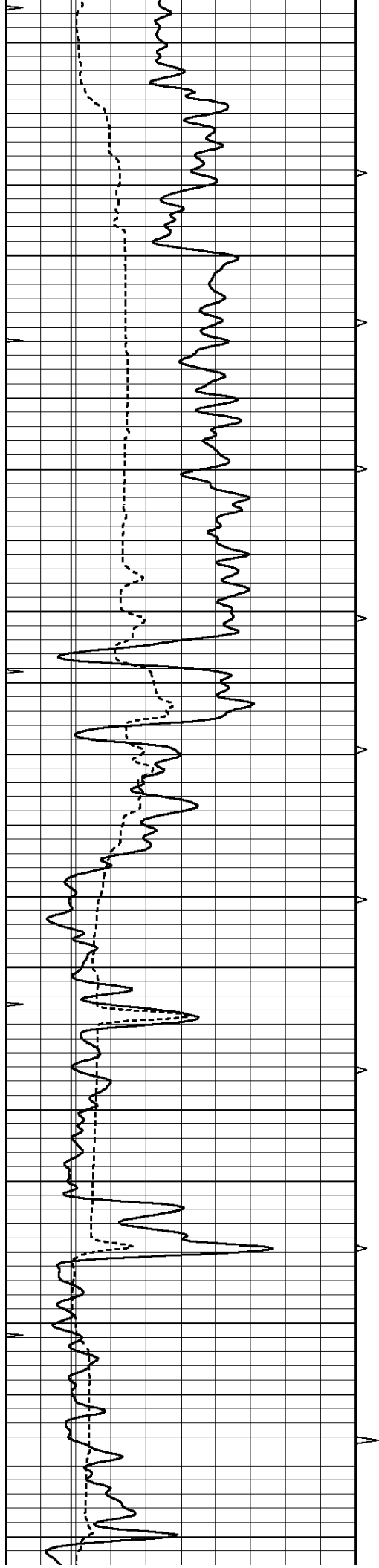
**Comments**

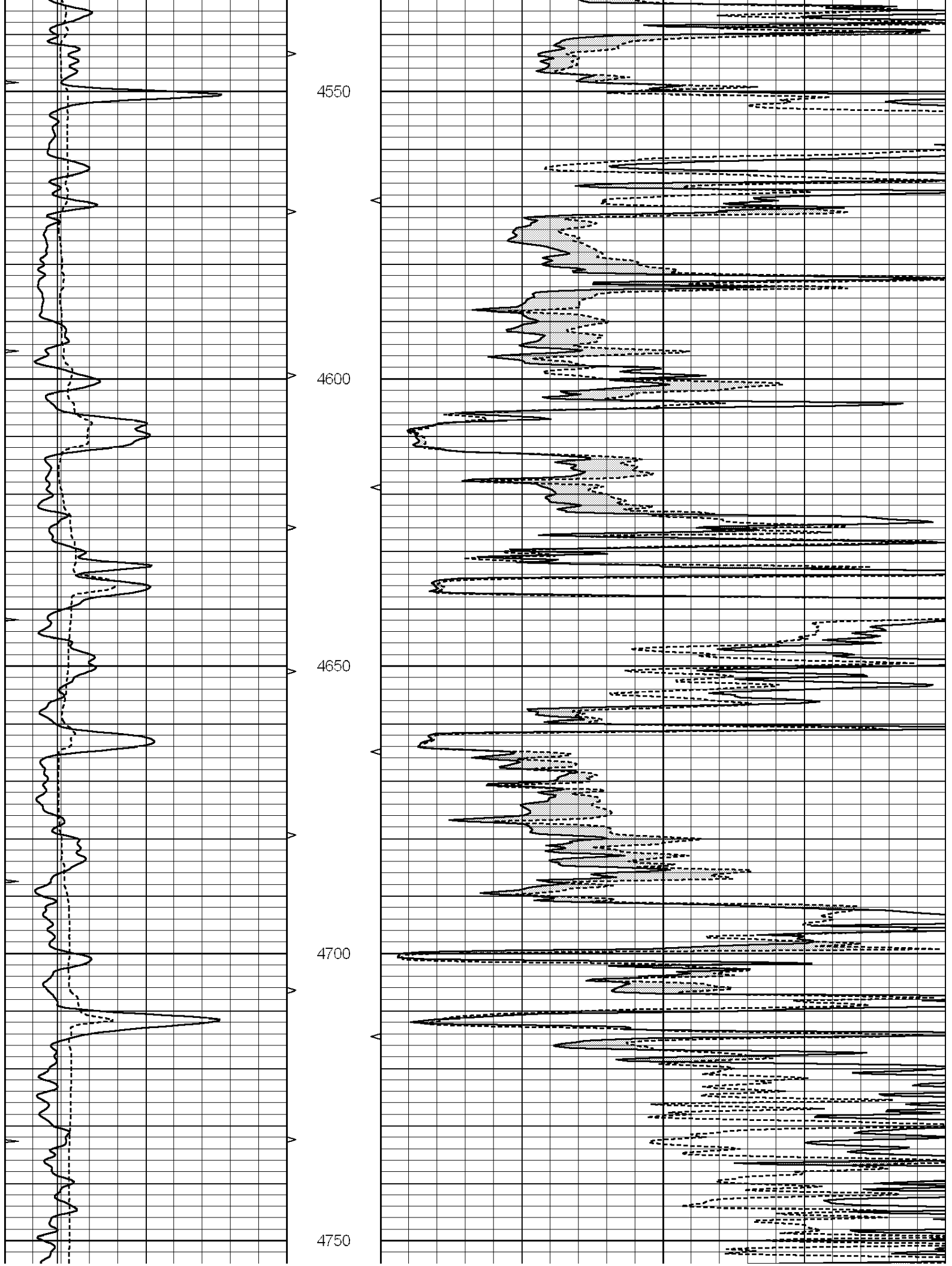
THANK YOU FOR USING SUPERIOR WELL SERVICE HAYS, KANSAS (785) 628-6395  
DIRECTIONS  
COLDWATER, KS - 5 MILES EAST - 2 MILES NORTH  
2 MILES NORTH & WEST INTO

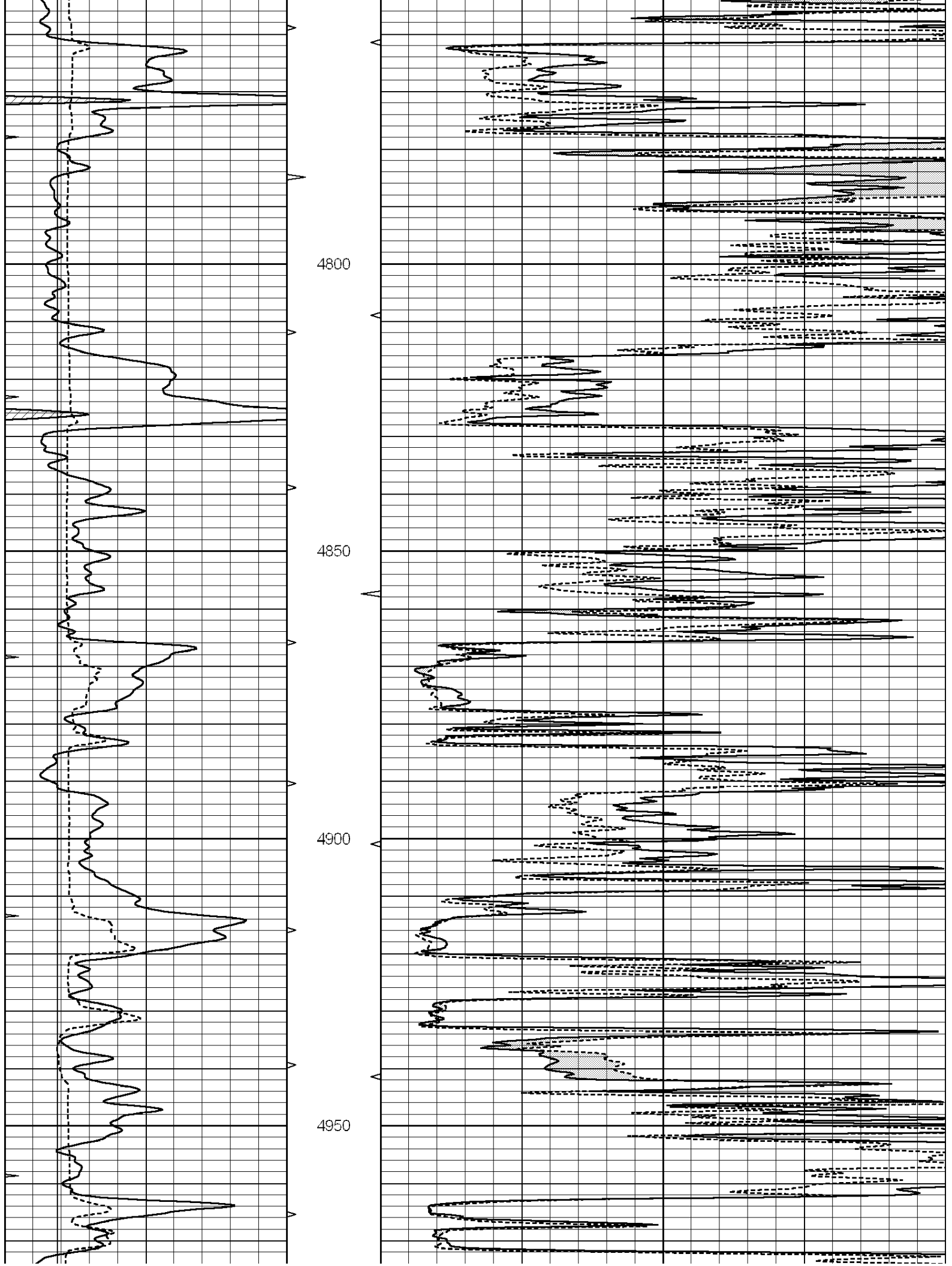
0	GAMMA RAY (GAPI)	150	ABHV	0	MEL1.5 (Ohm-m)	40
6	CALIPER (in)	16	10 (ft3)	0	MEL2.0 (Ohm-m)	40
0	MINMK	20	TBHV			
			0 (ft3)	10		

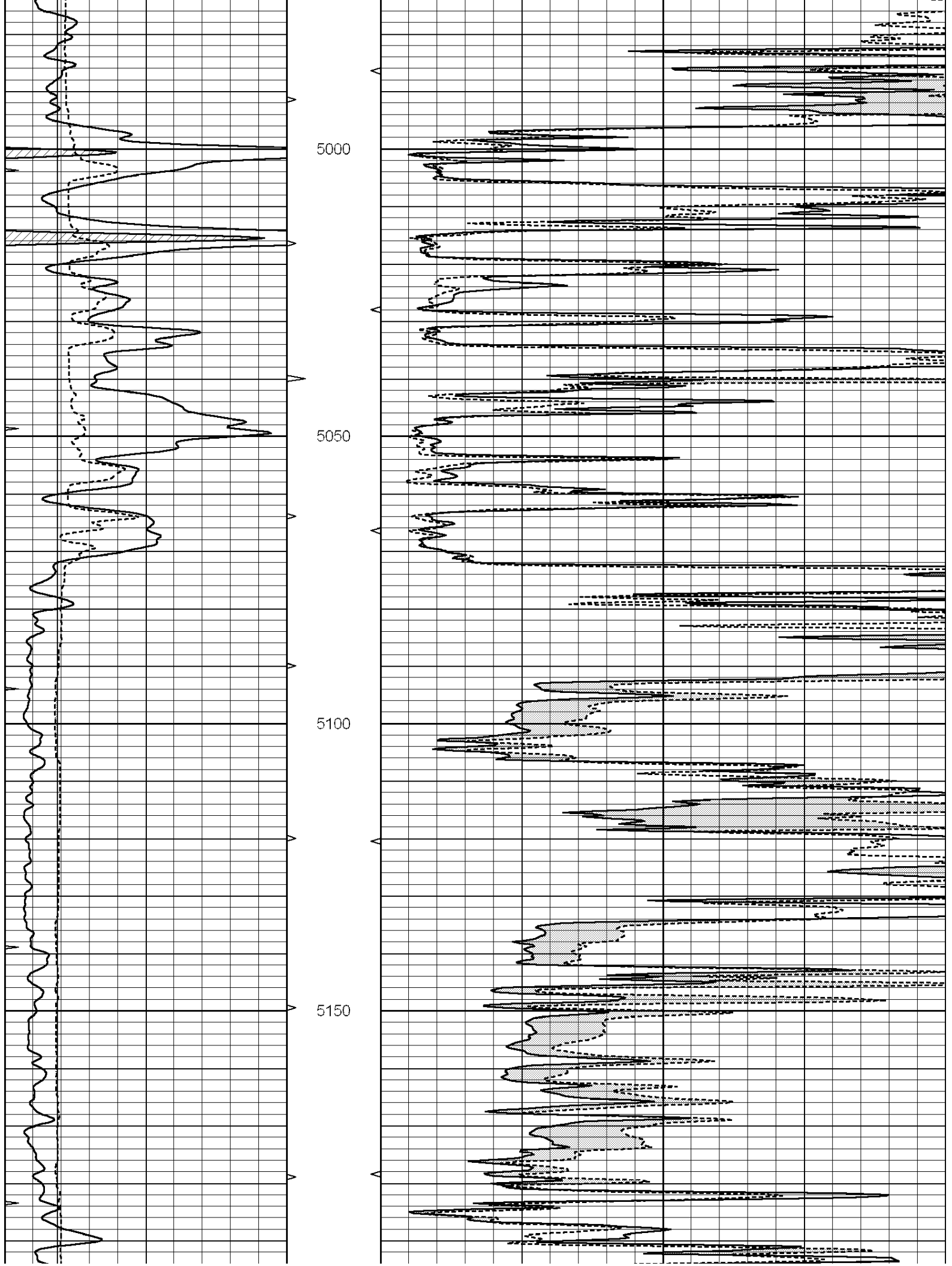


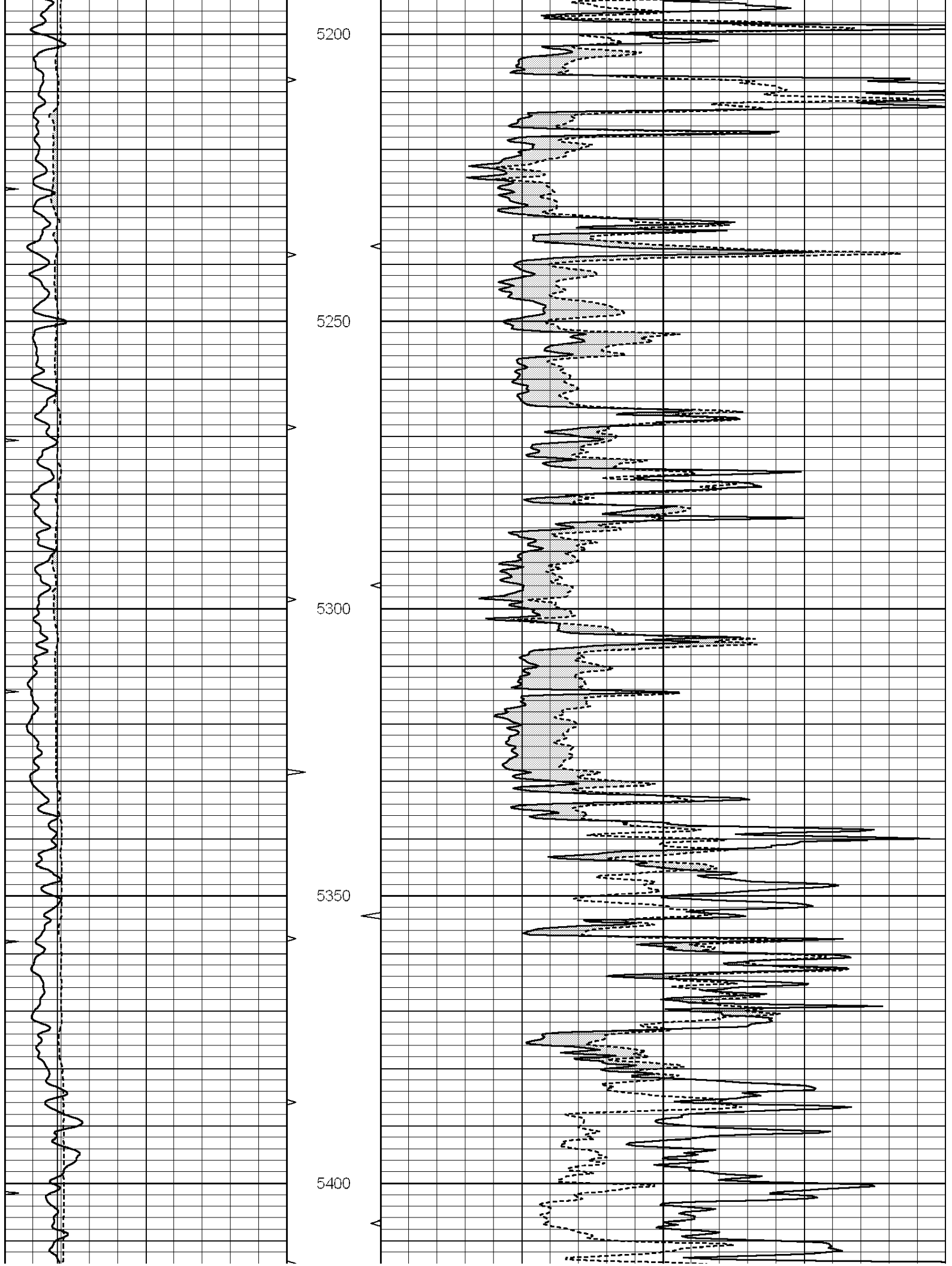




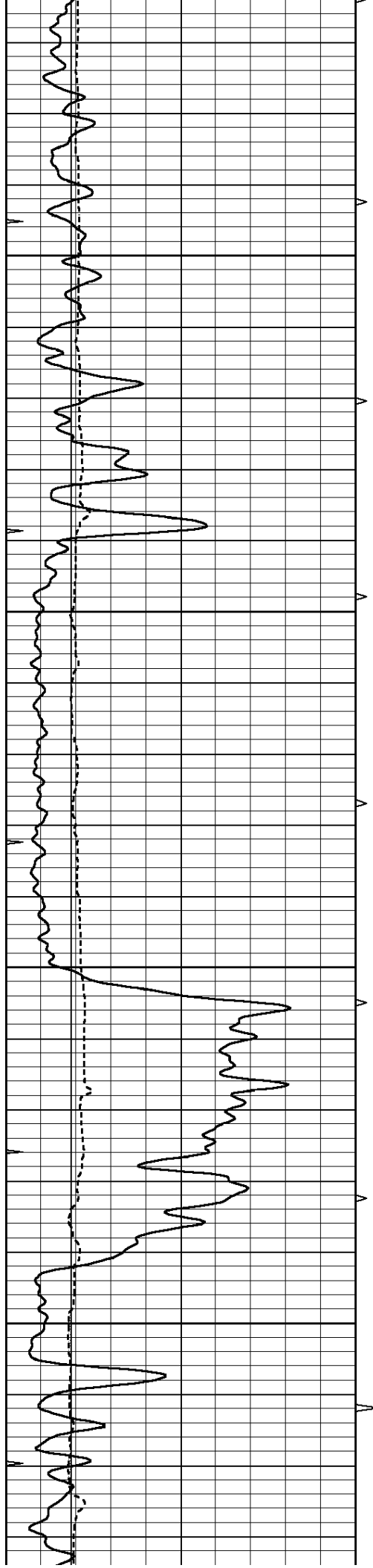










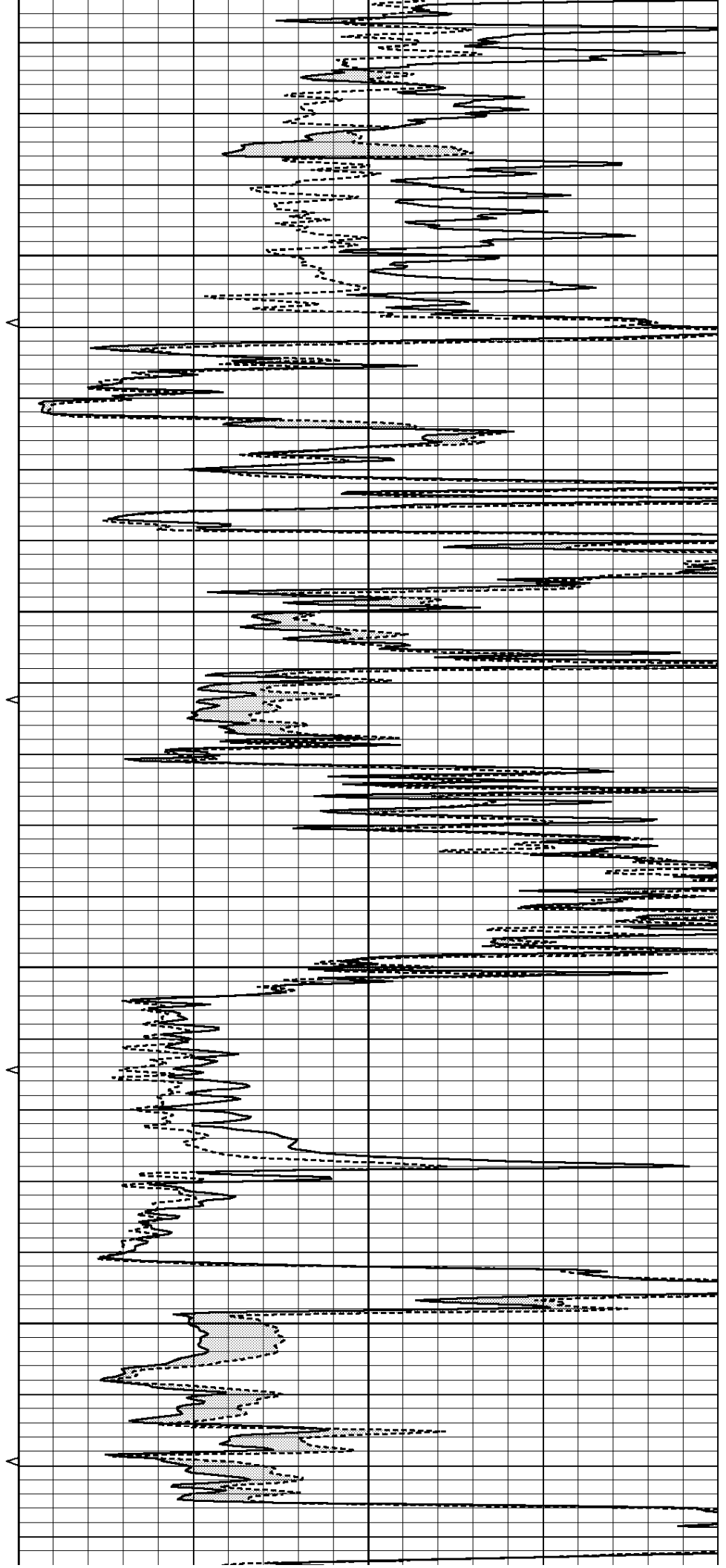


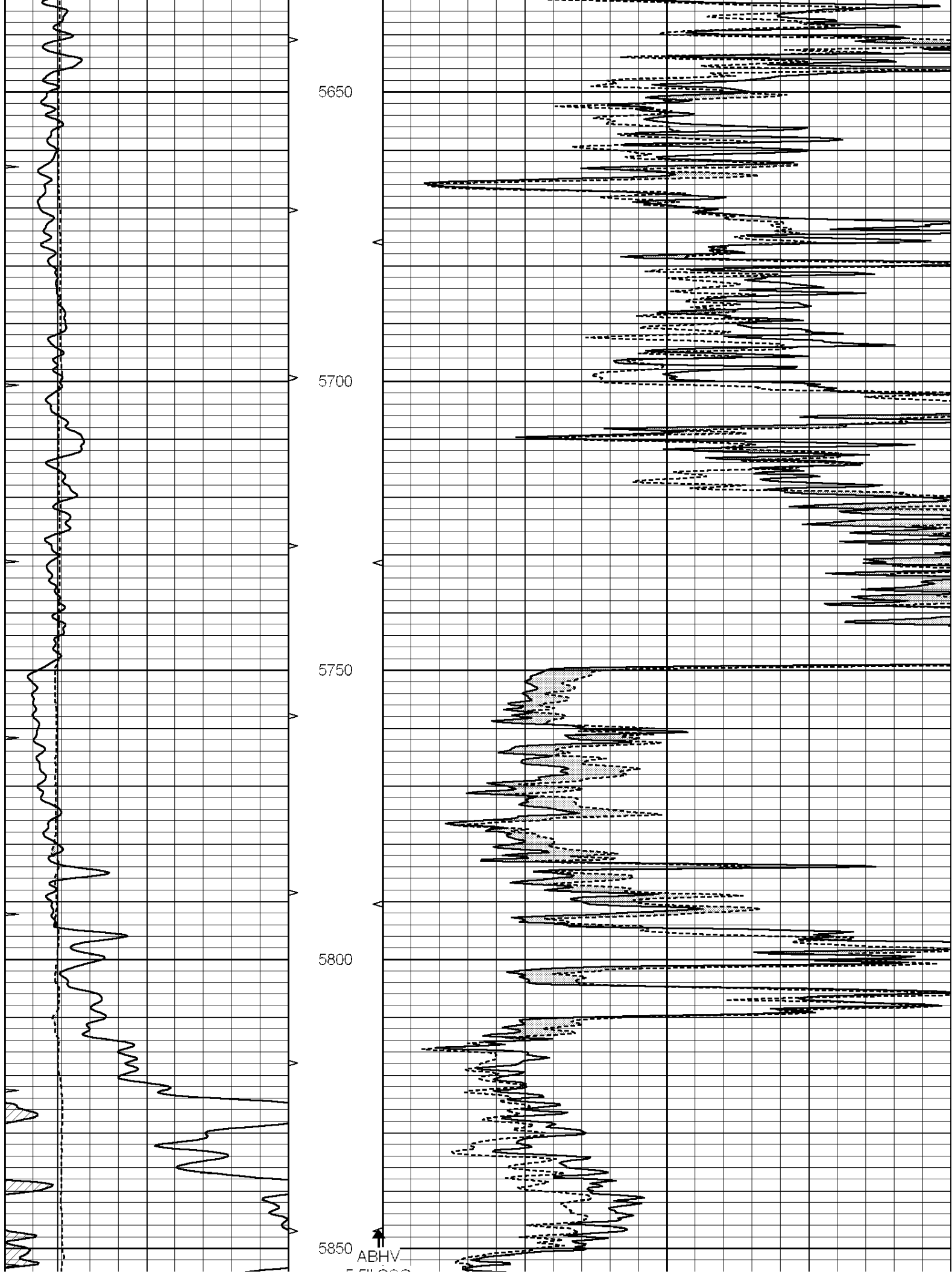
5450

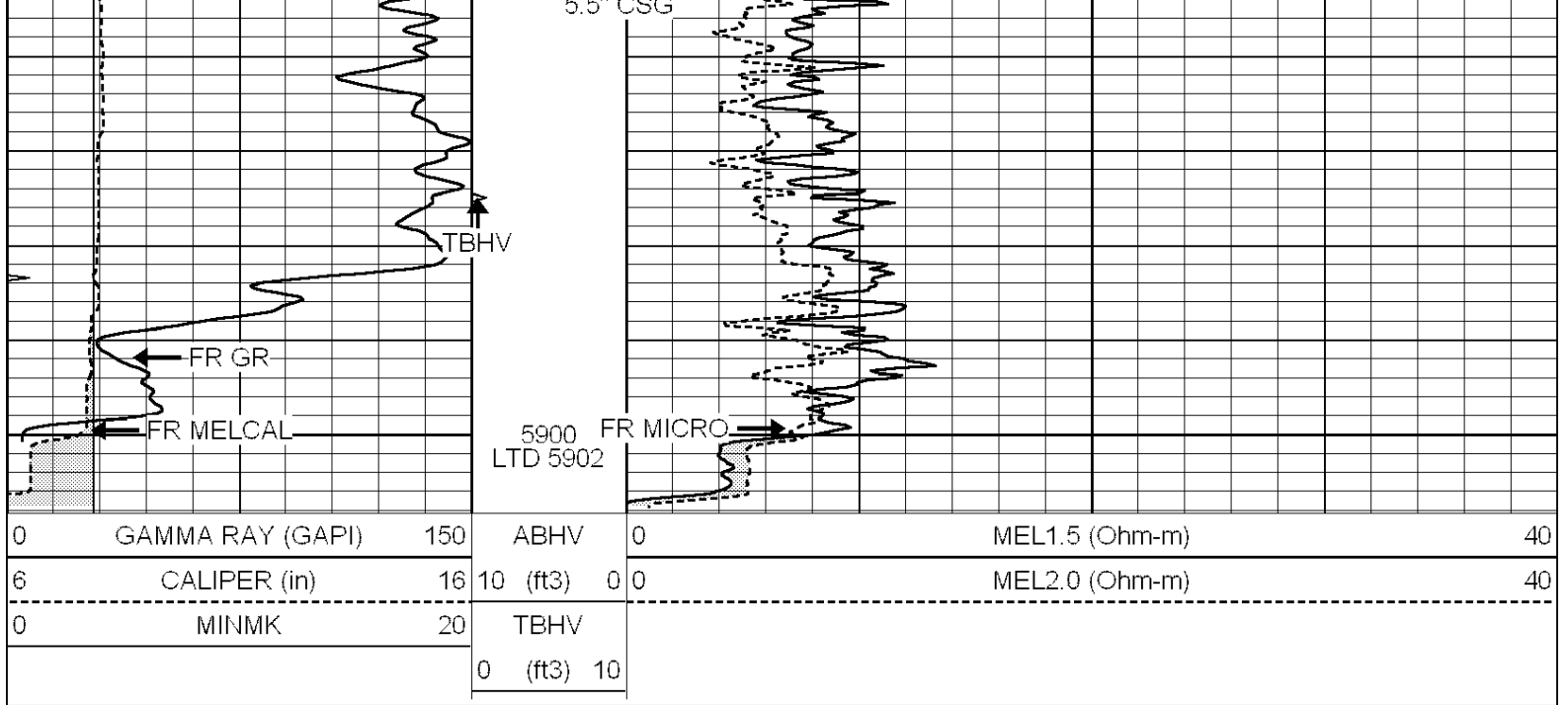
5500

5550

5600





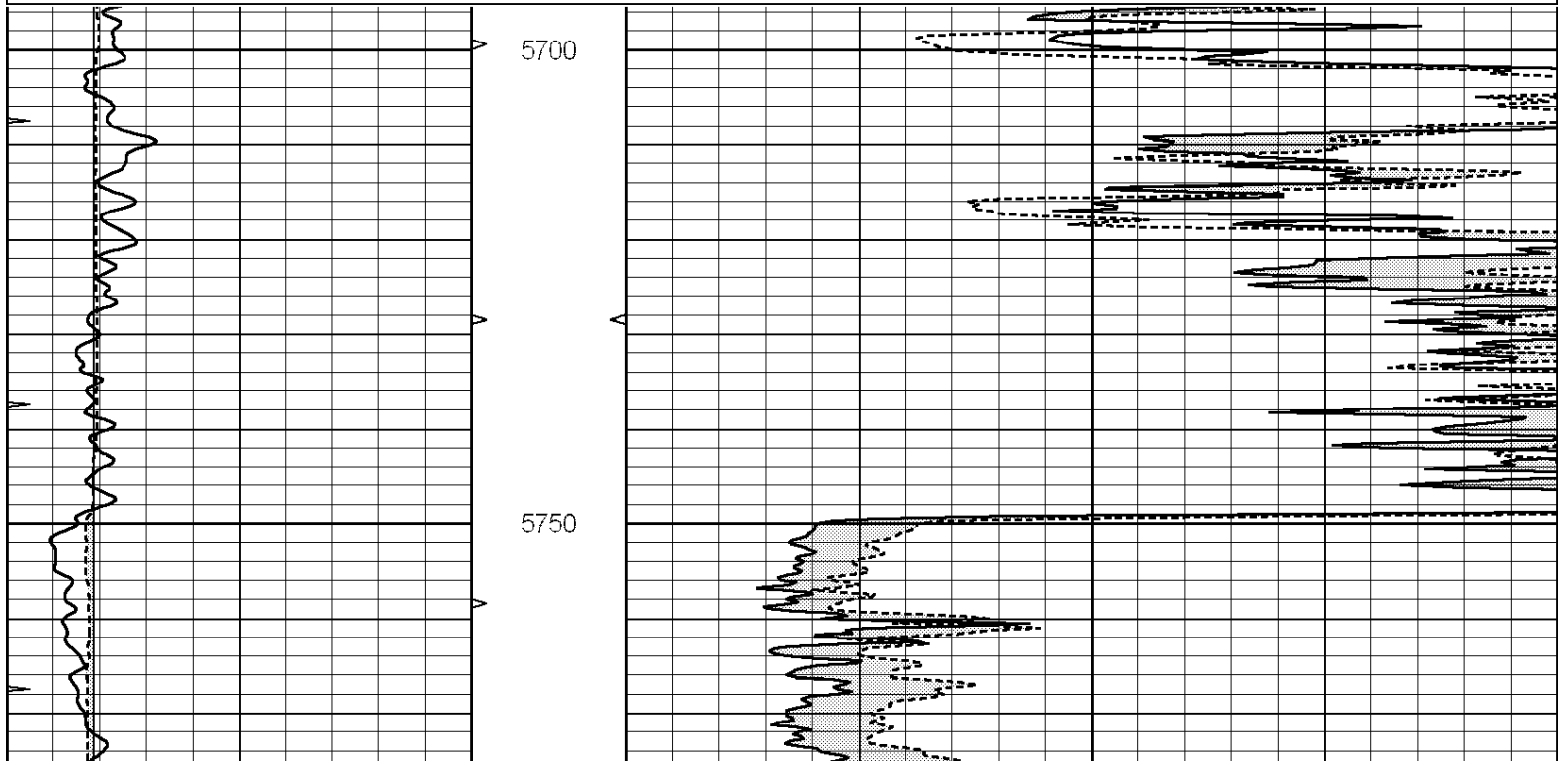


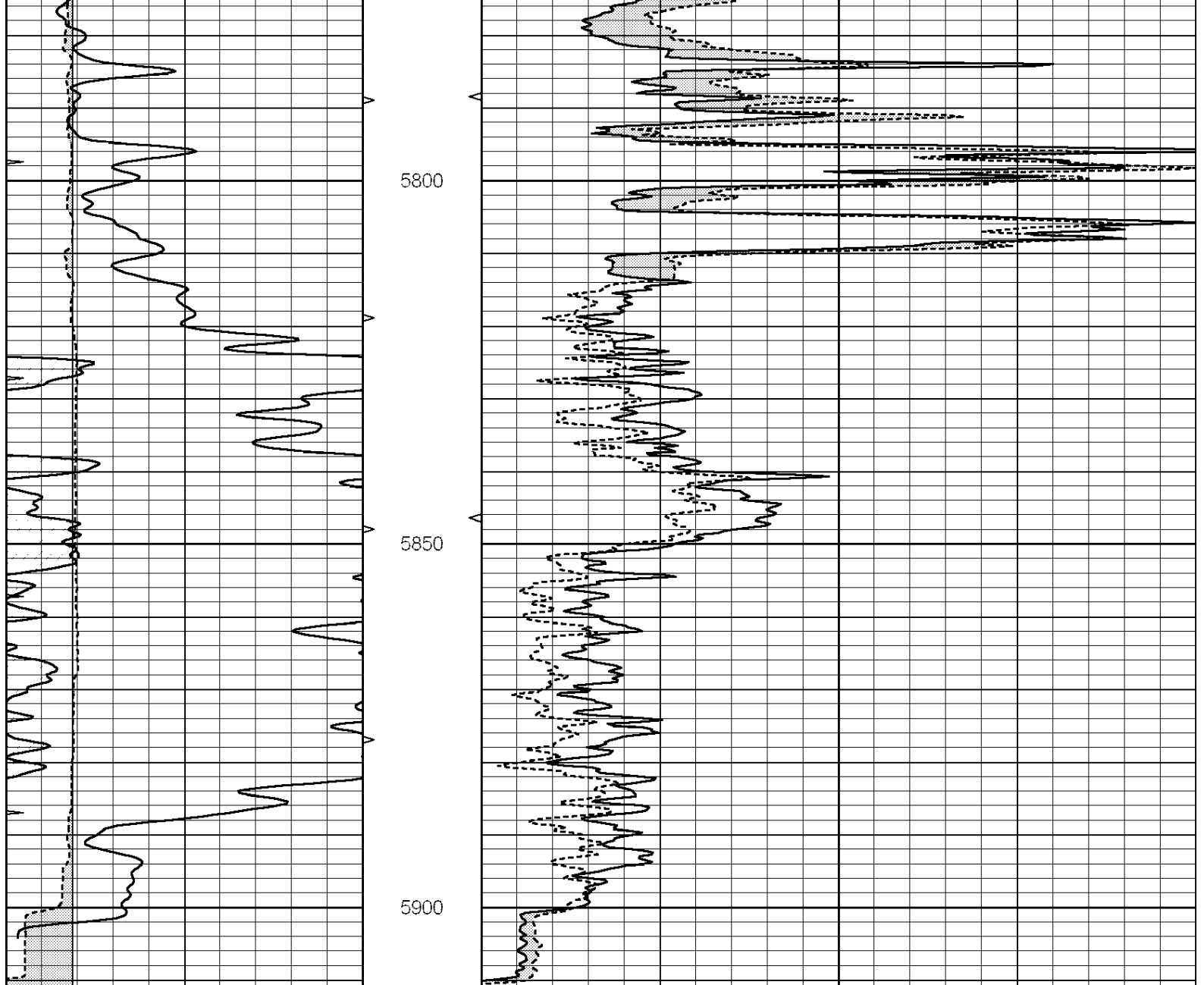
SUPERIOR  
Hays,  
Kansas

# REPEAT SECTION

Database File: 007977pe.db  
 Dataset Pathname: pass6.1  
 Presentation Format: micro  
 Dataset Creation: Tue Nov 01 12:30:38 2011 by Calc Open-Cased 090629  
 Charted by: Depth in Feet scaled 1:240

0	GAMMA RAY (GAPI)	150	ABHV	0	MEL1.5 (Ohm-m)	40
6	CALIPER (in)	16	10 (ft3)	0	MEL2.0 (Ohm-m)	40
0	MINMK	20	TBHV			
			0 (ft3)	10		





0	GAMMA RAY (GAPI)	150	ABHV	0	MEL1.5 (Ohm-m)	40
6	CALIPER (in)	16	10 (ft3)	0	MEL2.0 (Ohm-m)	40
0	MINMK	20	TBHV			
			0 (ft3)	10		

### Calibration Report

Database File: 007977pe.db  
 Dataset Pathname: pass7.1  
 Dataset Creation: Tue Nov 01 13:22:52 2011 by Calc Open-Cased 090629

### MICRO Calibration Report

Serial Number:	2	
Tool Model:	PROBE	
Performed:	Mon Oct 17 11:04:50 2011	
Caliper Calibration:	Gain=4.809	Offset=2.259
References	Low Cal	High Cal
Readings	5.800	13.500
	0.757	2.358
1.5" Calibration:	Gain=43.000	Offset=0.000

1.5" Calibration:	Gain=15.000	Offset=0.000
References	Low Cal 0.000	High Cal 20.000
Readings	0.065	1.210

2" Calibration:	Gain=53.000	Offset=1.000
References	Low Cal 0.000	High Cal 20.000
Readings	0.012	1.043

Gamma Ray Calibration Report

Serial Number:	GR4	
Tool Model:	OPEN	
Performed:	Tue Nov 01 12:26:07 2011	
Calibrator Value:	200.0	GAPI
Background Reading:	0.0	cps
Calibrator Reading:	189.0	cps
Sensitivity:	1.0000	GAPI/cps