



**TRILOBITE TESTING, INC.**

# DRILL STEM TEST REPORT

Oil Producers Inc Of Kansas

**23-31s-18w**

1710 Waterfront Park way  
Wichita KS 67206+6603

**Gray #1-23**

Job Ticket: 44029

**DST#: 3**

ATTN: Brian McCoy/Steve Va

Test Start: 2011.10.28 @ 22:19:11

## GENERAL INFORMATION:

Formation: **Mississippi**

Deviated: No Whipstock: ft (KB)

Time Tool Opened: 00:48:26

Time Test Ended: 07:08:56

Test Type: Conventional Bottom Hole (Reset)

Tester: Leal Cason

Unit No: 45

**Interval: 5094.00 ft (KB) To 5109.00 ft (KB) (TVD)**

Reference Elevations: 2135.00 ft (KB)

Total Depth: 5109.00 ft (KB) (TVD)

2122.00 ft (CF)

Hole Diameter: 7.88 inches Hole Condition: Good

KB to GR/CF: 13.00 ft

**Serial #: 6798**

**Inside**

Press @ Run Depth: 80.29 psig @ 5095.00 ft (KB)

Capacity: 8000.00 psig

Start Date: 2011.10.28

End Date:

2011.10.29

Last Calib.:

2011.10.29

Start Time: 22:19:12

End Time:

07:08:56

Time On Btm:

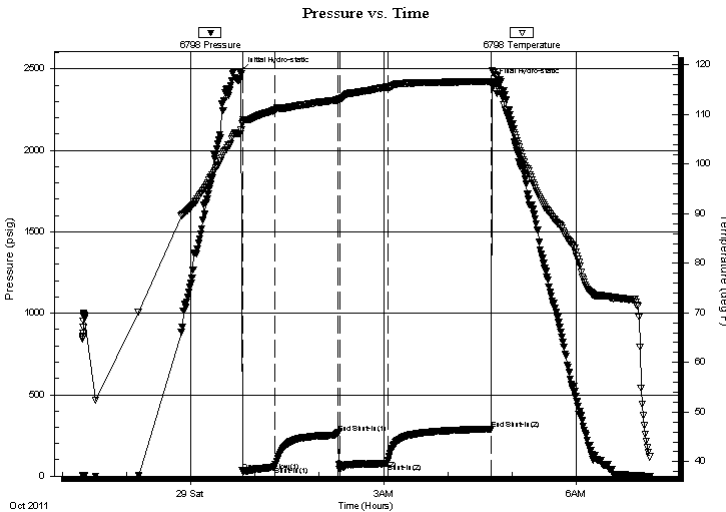
2011.10.29 @ 00:46:11

Time Off Btm:

2011.10.29 @ 04:41:26

**TEST COMMENT:** IF: Strong Blow , BOB in 1 minute  
IS: 5 1/2 inch Blow back  
FF: Strong Blow , BOB in 45 seconds  
FS: 1 inch Blow back

## PRESSURE SUMMARY



Time (Min.)	Pressure (psig)	Temp (deg F)	Annotation
0	2485.04	106.19	Initial Hydro-static
3	30.84	108.54	Open To Flow (1)
33	57.31	110.92	Shut-In(1)
92	265.67	112.98	End Shut-In(1)
93	42.17	113.17	Open To Flow (2)
138	80.29	115.59	Shut-In(2)
234	289.09	116.71	End Shut-In(2)
236	2414.69	118.88	Final Hydro-static

## Recovery

Length (ft)	Description	Volume (bbl)
0.00	4068 GIP	0.00
120.00	GOCM 12%G 28%O 60%M	0.59
80.00	GOCM 15%G 35%O 50%M	0.56

## Gas Rates

Choke (inches)	Pressure (psig)	Gas Rate (Mcf/d)

\* Recovery from multiple tests



**TRILOBITE  
TESTING, INC.**

# DRILL STEM TEST REPORT

**FLUID SUMMARY**

Oil Producers Inc Of Kansas

**23-31s-18w**

1710 Waterfront Parkway  
Wichita KS 67206+6603

**Gray #1-23**

Job Ticket: 44029

**DST#: 3**

ATTN: Brian McCoy/Steve Va

Test Start: 2011.10.28 @ 22:19:11

## Mud and Cushion Information

Mud Type: Gel Chem

Cushion Type:

Oil API:

deg API

Mud Weight: 9.00 lb/gal

Cushion Length:

ft

Water Salinity:

ppm

Viscosity: 50.00 sec/qt

Cushion Volume:

bbbl

Water Loss: 8.79 in<sup>3</sup>

Gas Cushion Type:

Resistivity: 0.00 ohm.m

Gas Cushion Pressure:

psig

Salinity: 5000.00 ppm

Filter Cake: 0.02 inches

## Recovery Information

Recovery Table

Length ft	Description	Volume bbbl
0.00	4068 GIP	0.000
120.00	GOCM 12%G 28%O 60%M	0.590
80.00	GOCM 15%G 35%O 50%M	0.557

Total Length: 200.00 ft      Total Volume: 1.147 bbl

Num Fluid Samples: 0

Num Gas Bombs: 0

Serial #:

Laboratory Name:

Laboratory Location:

Recovery Comments:

Serial #: 6798

Inside

Oil Producers Inc Of Kansas

Gray #1-23

DST Test Number: 3

### Pressure vs. Time

