



# Fall & Associates

Stake and Elevation Service

719 W. 5<sup>th</sup> Street

P.O. Box 404

Concordia, KS. 66901

1-800-536-2821

Date 3-27-12

Invoice Number 0320121

GORE OIL COMPANY  
Operator

B 1  
Number

Lynd  
Farm Name

Trego-KS  
County-State

28 11s 21w  
S T R

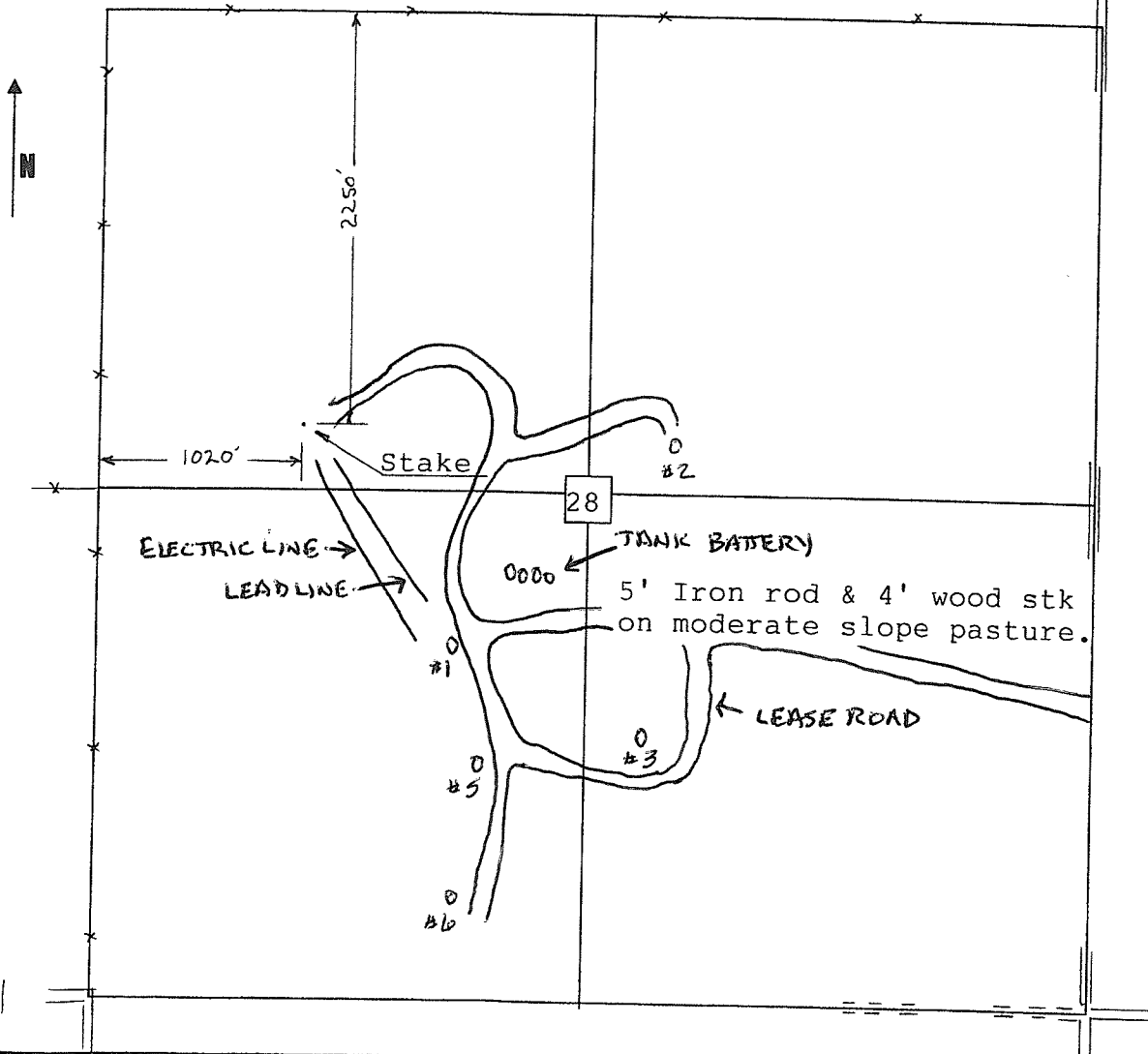
2250' ENL 1020' FWL  
Location

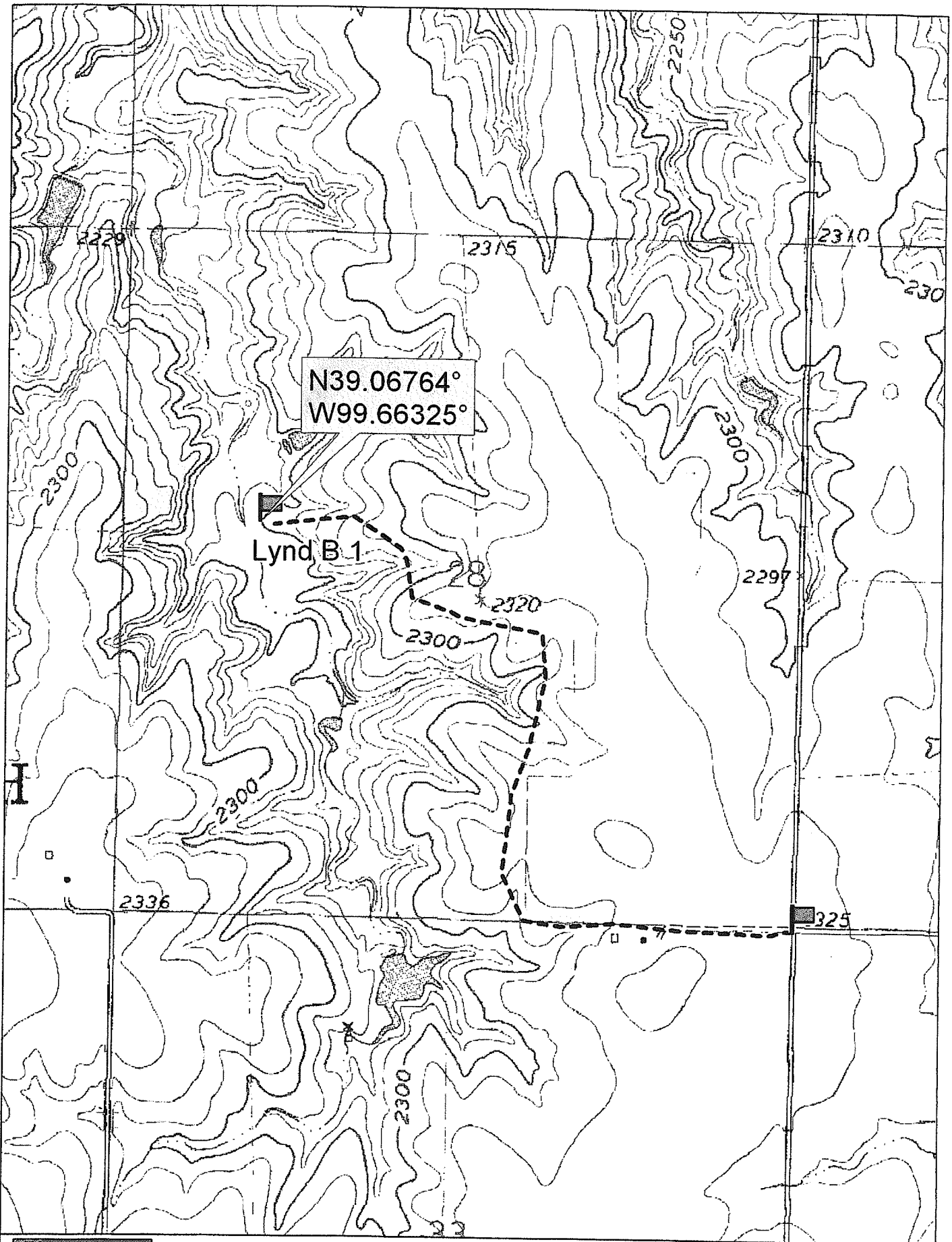
Gore Oil Company  
P.O. Box 2757  
Wichita, KS. 67201

Elevation 2250 Gr.

Ordered By: Becky

Scale 1"=1000'





N39.06764°  
W99.66325°

Lynd B.1

