

2267

2180

2170

14
Shale
Pit

2299

2281

2193

PROPOSED ELECTRIC

2 PROPOSED
EROWLINE

BALHAZOR A#3

EXISTING
GUN BARREL

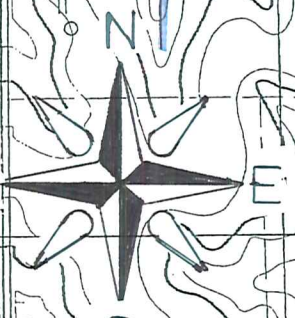
PROPOSED
ROAD

2300

EXISTING TANK
BATTERY

23 BALHAZOR A

2302



9S, 21W, GRAHAM COUNTY, KS

2250

2250

23

2270

2330

2280

Oil Well