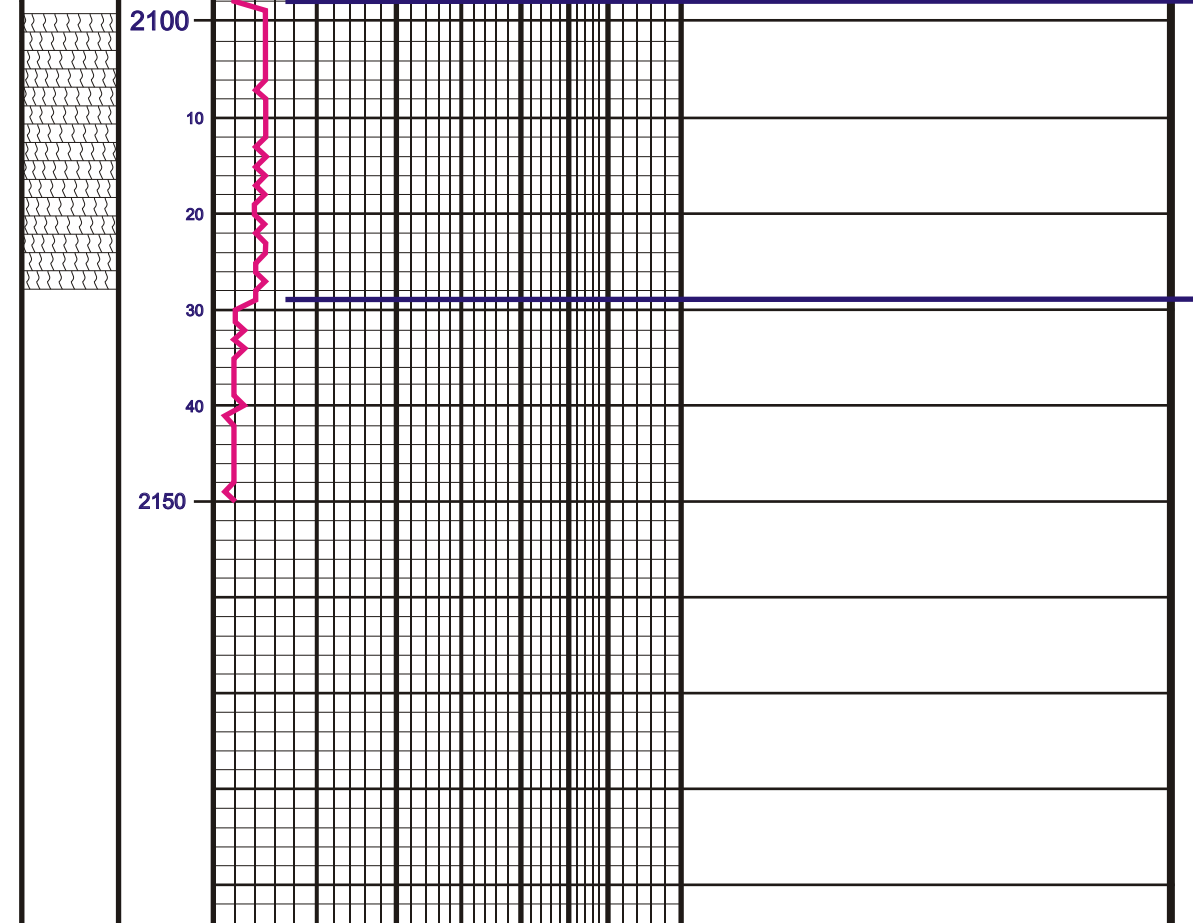


COBALT ENERGY
OIL & NATURAL GAS

GEOLOGIST'S REPORT
DRILL TIME &
SAMPLE LOG

COMPANY	COBALT ENERGY, LLC	ELEVATIONS	KB 2462'
LEASE	Hobbs 'A' #1-18	FIELD	Wildcat
LOCATION	990' FNL & 1980' FEL	SEC	18 TWP 10S RGE 24W
COUNTY	Graham STATE KS	CONTRACTOR	Va Energy, Rig #6
SPUD	1/06/11 COMP 1/14/12	RTD	4/06/11 TYPE MUD 4049'
MUD UP	3/30/11	CONDUCTOR	NA
SAMPLES SAVED FROM	3600' TO RTD	Surface	8.516" @ 226'
DRILLING TIME KEPT FROM	3600' TO RTD	Production	5.7% @ 4042'
SAMPLES EXAMINED FROM	3600' TO RTD	Electrical Surveys	Compensated Neutron-Density
GEOLOGICAL SUPERVISION FROM	3270' to RTD	Dual Induction	Microlog
GEOLOGIST ON WELL	Corey N. Baker	Printer/Wellfile	

FORMATION TOPS	ELECTRIC LOG	SAMPLE
Anhydrite	2094 (+364)	2098 (+364)
Base of Anhydrite	2126 (+336)	2129 (+333)
Heebner	3734 (-1272)	3737 (-1275)
Lansing	3772 (-1310)	3776 (-1314)
Stark	3967 (-1459)	3964 (-1542)
BKC	3999 (-1537)	4006 (-1544)
RTD	4049 (-1587)	4050 (-1588)



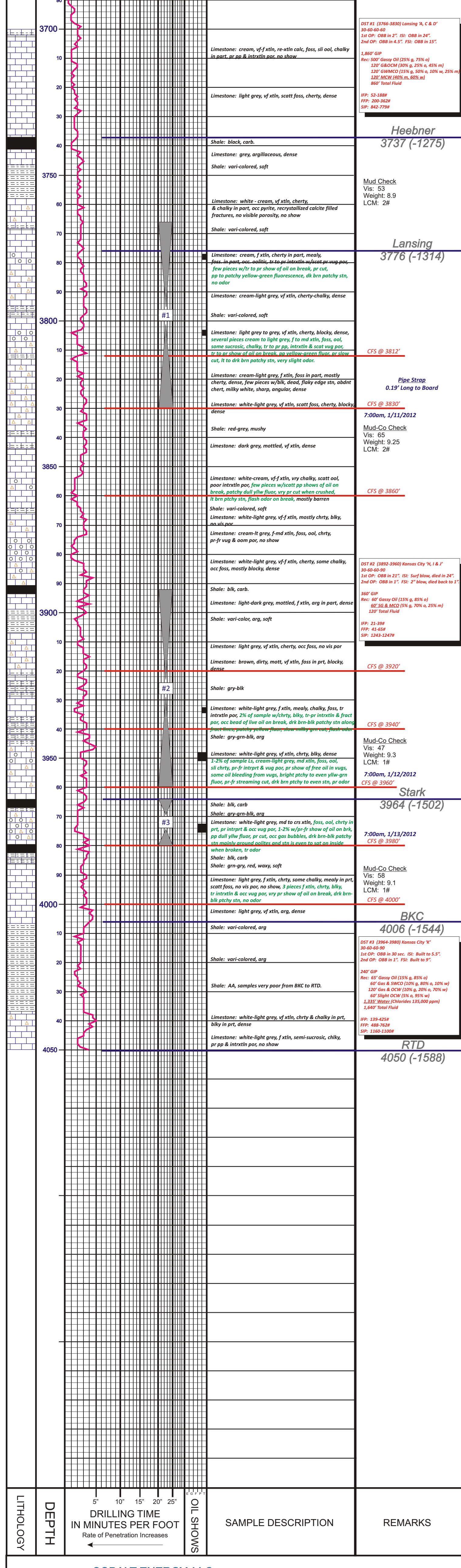
REMARKS Based on the results of DST #1 & 2, samples and log analysis, it was decided to set production casing to further test the potential of the Hobbs 'A' #1-18 through perforations.

Respectfully Submitted, Corey Baker Petroleum Geologist

API #15-065-23798-00-00

LEGEND

Anhydrite	Sandstone	Limestone	Shale	Carb Sh	Cherty LS	Chert	Dolomite
-----------	-----------	-----------	-------	---------	-----------	-------	----------



LEGEND

Anhydrite	Sandstone	Limestone	Shale	Carb Sh	Cherty LS	Chert	Dolomite
-----------	-----------	-----------	-------	---------	-----------	-------	----------



Company **COBALT ENERGY, LLC** Elevation **2462' KB**

Lease **Hobbs 'A' #1-18**

Location **990' FNL & 1980' FEL SEC. 18 TWP 10S RGE 24W**

County **Graham** State **Kansas**