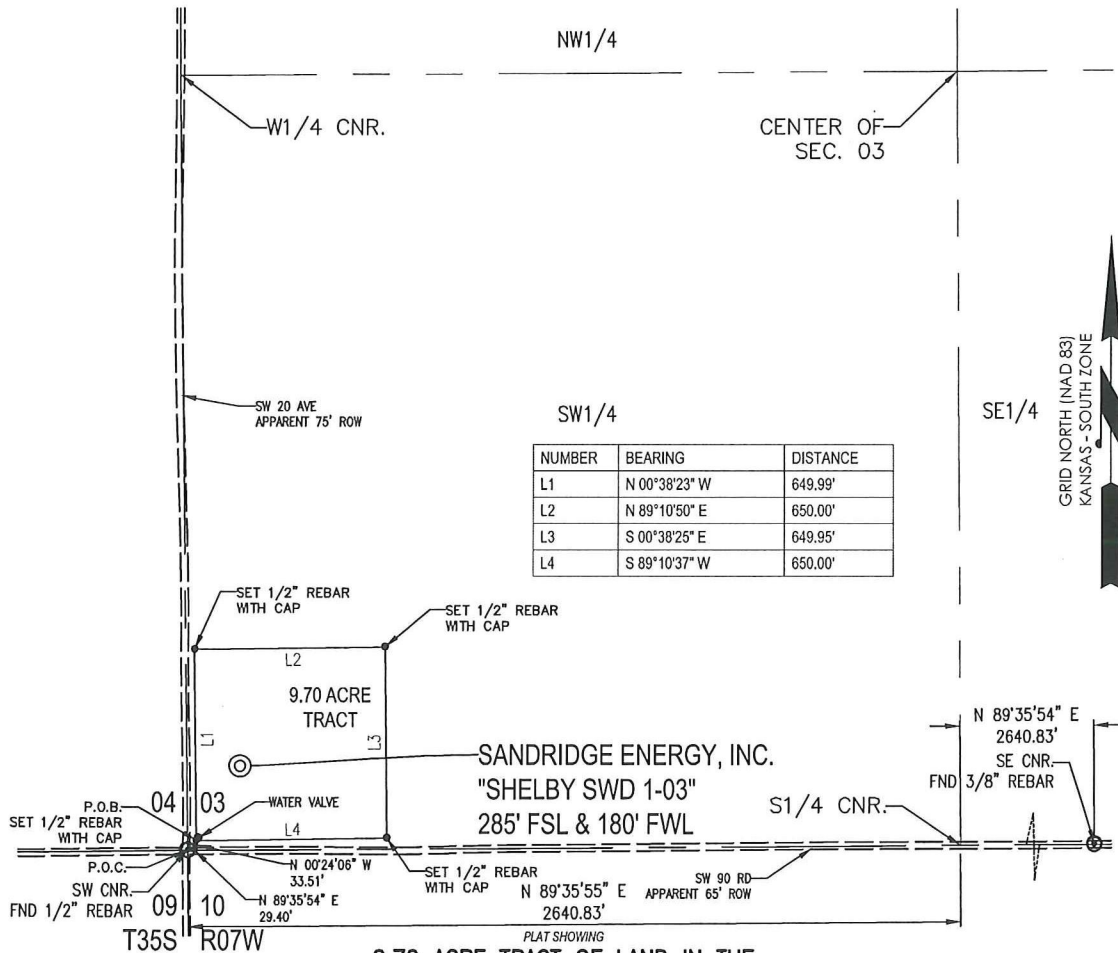


T 35 S - R 07 W



NUMBER	BEARING	DISTANCE
L1	N 00°38'23" W	649.99'
L2	N 89°10'50" E	650.00'
L3	S 00°38'25" E	649.95'
L4	S 89°10'37" W	650.00'

**9.70 ACRE TRACT OF LAND IN THE  
 SW 1/4 OF SECTION 03, T35S-R07W,  
 HARPER COUNTY, KANSAS**

**METES AND BOUNDS DESCRIPTION (9.70 ACRE TRACT)**

PART OF THE SW 1/4 OF SECTION 03, TOWNSHIP 35 SOUTH, RANGE 07 WEST, HARPER COUNTY, KANSAS, MORE PARTICULARLY DESCRIBED AS FOLLOWS:

COMMENCING AT THE SW CORNER OF SAID SECTION 03;  
 THENCE N 89°35'54" E ALONG THE SOUTH LINE OF SAID SECTION 03, A DISTANCE OF 29.40 FEET;  
 THENCE N 00°24'06" W, A DISTANCE OF 33.51 FEET TO THE POINT OF BEGINNING;  
 THENCE N 00°38'23" W, A DISTANCE OF 649.99 FEET;  
 THENCE N 89°10'50" E, A DISTANCE OF 650.00 FEET;  
 THENCE S 00°38'25" E, A DISTANCE OF 649.95 FEET;  
 THENCE S 89°10'37" W, A DISTANCE OF 650.00 FEET TO THE POINT OF BEGINNING.

SAID TRACT CONTAINING 9.70 ACRES MORE OR LESS OF LAND AS SURVEYED.

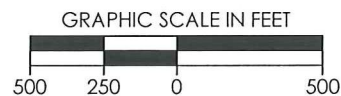
THE COORDINATES ARE BASED ON NAD83 STATE PLANE COORDINATE SYSTEM AS PROCESSED BY OPUS USING THESE STATIONS: AF9518 LMNO LAMONT CORS ARP, AF9525 VCI0 VICI CORS ARP, & AF9562 HVLK HAVILAND CORS ARP

**SURVEYOR'S CERTIFICATE:**

I, C. ED GRAY, KANSAS LICENSED PROFESSIONAL LAND SURVEYOR, NO. 1404, DO HEREBY CERTIFY THAT THIS PLAT REPRESENTS THE RESULTS OF A SURVEY MADE ON THE GROUND UNDER MY SUPERVISION ON THE DATE OF 03-27-2012.

**GENERAL NOTES:**

THE TIES AND FOOTAGES SHOWN ON THIS PLAT ARE FROM LINES OF OCCUPATION FROM A SURVEY MADE ON THE GROUND AND / OR BEARING AND DISTANCES FROM THE GENERAL LAND OFFICE PLAT OF THE AREA SHOWN AND MAY NOT BE THE ACTUAL PROPERTY CORNERS. THIS PLAT DOES NOT REPRESENT A TRUE BOUNDARY SURVEY.

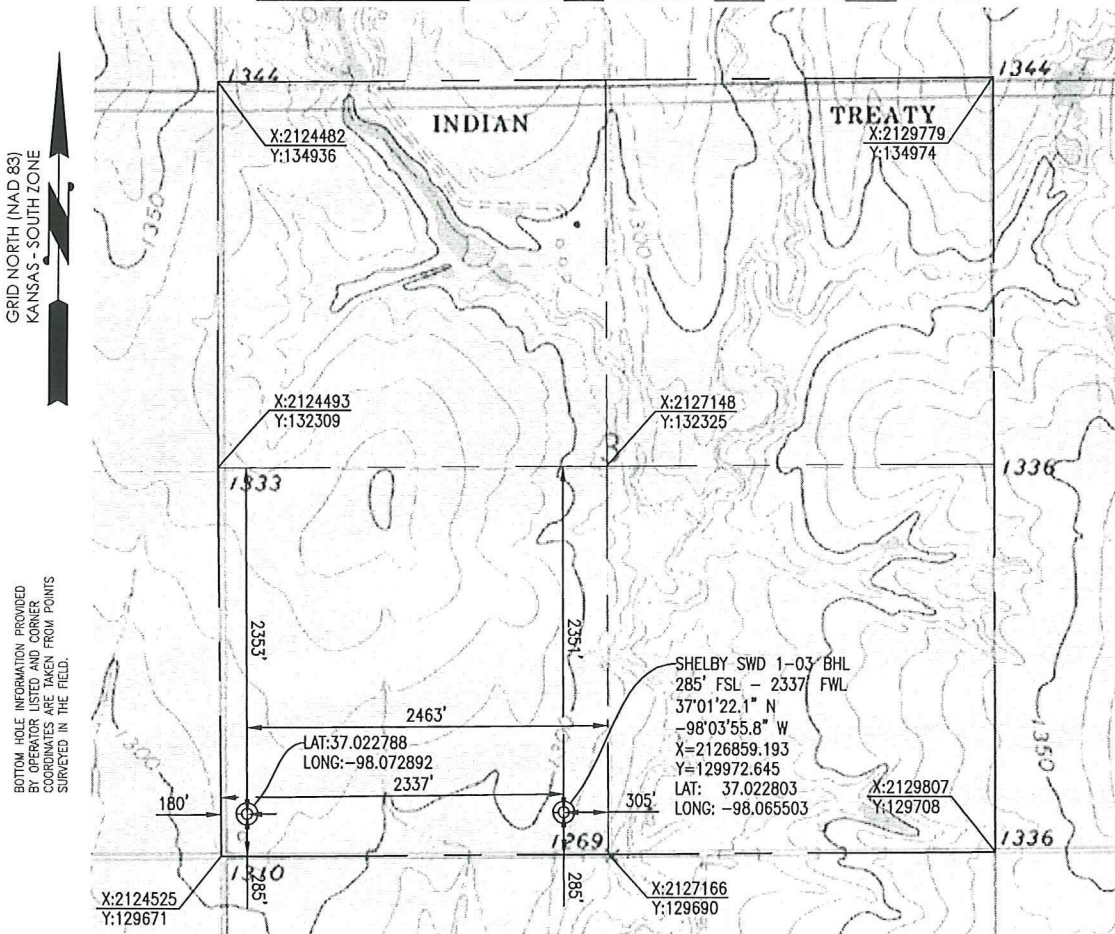


REVISION		SandRidge	
△	ADDED BHL (03-27-2012)	"SHELBY SWD 1-03" PART OF THE SW 1/4 OF SECTION 03, T-35-S, R-07-W PROPOSED DRILL SITE HARPER COUNTY, KANSAS	
	SCALE: 1" = 500'		
	PLOT DATE: 03-27-2012	DRAWN BY: S.ANDER	SHEET NO.: 1 OF 1



HARPER COUNTY, KANSAS

285' FSL- 180' FWL SECTION 03 TOWNSHIP 35S RANGE 07W 6TH P.M.



GRID NORTH (NAD 83)  
 KANSAS - SOUTH ZONE

BOTTOM HOLE INFORMATION PROVIDED  
 FOR LISTED AND CORNER  
 COORDINATES ARE FROM POINTS  
 SURVEYED IN THE FIELD.

THE COORDINATES ARE BASED ON NAD83 STATE PLANE COORDINATE SYSTEM AS PROCESSED BY OPUS USING THESE  
 STATIONS: AF9518 LMNO LAWOMT CORRS ARP. AF9525 VICIO VICI CORRS ARP. & AF9562 HVLLK HAVILAND CORRS ARP.

**ELEVATION:**  
 1315' GR. AT STAKE

OPERATOR: SANDRIDGE ENERGY, INC.

WELL NO: 1-03

LEASE NAME: SHELBY SWD

TOPOGRAPHIC & VEGETATION: LOCATION FELL IN A FIELD

GOOD DRILL SITE: YES

REFERENCE STAKES OR ALTERNATE LOCATION  
 STAKES SET: NONE

BEST ACCESSIBILITY TO LOCATION: SOUTH OR WEST LINE

DISTANCE & DIRECTION  
 FROM HWY JCT OR TOWN: FROM THE JCT. OF KS-179 & SW 106 RD (OK-KS STATE LINE), TRAVEL  
 NORTH ON KS-179 FOR ±1.5 MILES, TURN LEFT (WEST) ON SW 90 RD & TRAVEL ±1.5 MILES TO  
 THE SW CORNER OF S03, T35S-R07W.

(THE FOLLOWING INFORMATION WAS GATHERED USING A GPS RECEIVER ACCURACY ±2-3 METERS)

GPS DATUM: NAD-27  
 LAT: 37.022788  
 LONG: -98.072892

STATE PLANE COORDINATES:  
 ZONE: KS-SOUTH  
 X: 2124701.755  
 Y: 129957.102

DISTANCES SHOWN IN (PARENTHESIS) ARE CALCULATED BASED UPON THE QUARTER SECTION BEING 2640 FEET, THOSE SHOWN IN [BRACKETS] ARE BASED ON GLO (GENERAL LAND OFFICE) DISTANCES AND HAVE NOT BEEN MEASURED.



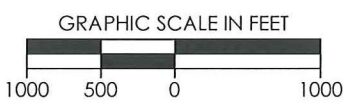
SURVEYOR'S CERTIFICATE:

DATE STAKED: 03-07-2012

I, C. ED GRAY, KANSAS LICENSED PROFESSIONAL LAND SURVEYOR, NO. 1404, DO HEREBY CERTIFY THAT THIS PLAT REPRESENTS THE RESULTS OF A SURVEY MADE ON THE GROUND UNDER MY SUPERVISION.

GENERAL NOTES:

THE TIES AND FOOTAGES SHOWN ON THIS PLAT ARE FROM LINES OF OCCUPATION FROM A SURVEY MADE ON THE GROUND AND / OR BEARING AND DISTANCES FROM THE GENERAL LAND OFFICE PLAT OF THE AREA SHOWN AND MAY NOT BE THE ACTUAL PROPERTY CORNERS. THIS PLAT DOES NOT REPRESENT A TRUE BOUNDARY SURVEY.



REVISION		<b>SandRidge</b>	
△	ADDED BHL (03-27-2012)	"SHELBY SWD 1-03" PART OF THE SW 1/4 OF SECTION 03, T-35-S, R-07-W PROPOSED DRILL SITE HARPER COUNTY, KANSAS	
		SCALE: 1" = 1000'	
		PLOT DATE: 03-27-2012	DRAWN BY: S.ANDER SHEET NO.: 1 OF 3