



TRILOBITE TESTING, INC.

DRILL STEM TEST REPORT

O'Brien Resources, LLC
 PO Box 6149
 Shreveport, La 71136
 ATTN: Kurt Talbott

36 17s 29w Lane, Ks
Boomhower # 36-2
 Job Ticket: 44507 **DST#: 5**
 Test Start: 2012.02.24 @ 23:28:00

GENERAL INFORMATION:

Formation: **Johnson**
 Deviated: No Whipstock: ft (KB)
 Test Type: Conventional Bottom Hole (Reset)
 Time Tool Opened: 02:17:45 Tester: Bradley Walter
 Time Test Ended: 09:08:00 Unit No: 53
 Interval: **4486.00 ft (KB) To 4550.00 ft (KB) (TVD)** Reference Elevations: 2786.00 ft (KB)
 Total Depth: 4550.00 ft (KB) (TVD) 2776.00 ft (CF)
 Hole Diameter: 7.88 inches Hole Condition: Good KB to GR/CF: 10.00 ft

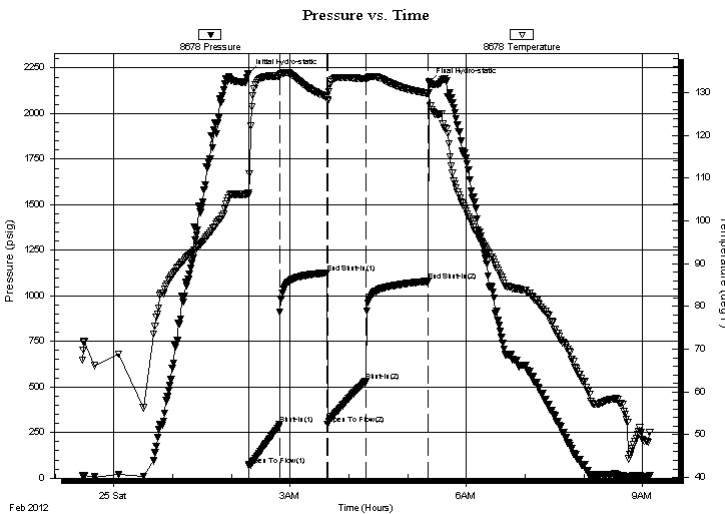
Serial #: 8678

Inside

Press @ Run Depth: 533.05 psig @ 4488.00 ft (KB) Capacity: 8000.00 psig
 Start Date: 2012.02.24 End Date: 2012.02.25 Last Calib.: 2012.02.25
 Start Time: 23:28:05 End Time: 09:08:00 Time On Btm: 2012.02.25 @ 02:17:30
 Time Off Btm: 2012.02.25 @ 05:21:30

TEST COMMENT: IF: BOB @ 11/2 min.
 IS: BOB @ 15 min.
 FF: BOB @ 5 minutes.
 FS: 8" return, died @ 50 min.

PRESSURE SUMMARY



Time (Min.)	Pressure (psig)	Temp (deg F)	Annotation
0	2219.46	106.44	Initial Hydro-static
1	70.30	106.04	Open To Flow (1)
32	295.75	133.92	Shut-In(1)
80	1125.83	129.02	End Shut-In(1)
81	297.10	128.26	Open To Flow (2)
120	533.05	133.21	Shut-In(2)
184	1079.72	129.78	End Shut-In(2)
184	2169.58	130.02	Final Hydro-static

Recovery

Length (ft)	Description	Volume (bbl)
120.00	gocm 35g 30o 35m	1.19
1370.00	gsmco 30g 3m 67o	13.63
0.00	860' GIP	0.00

* Recovery from multiple tests

Gas Rates

Choke (inches)	Pressure (psig)	Gas Rate (Mcf/d)



TRILOBITE TESTING, INC.

DRILL STEM TEST REPORT

O'Brien Resources, LLC
 PO Box 6149
 Shreveport, La 71136
 ATTN: Kurt Talbott

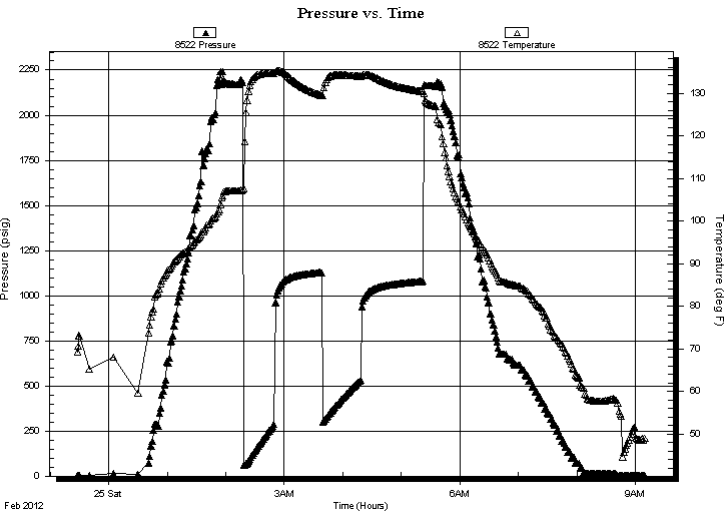
36 17s 29w Lane, Ks
Boomhower # 36-2
 Job Ticket: 44507 **DST#: 5**
 Test Start: 2012.02.24 @ 23:28:00

GENERAL INFORMATION:

Formation: **Johnson**
 Deviated: No Whipstock: ft (KB)
 Time Tool Opened: 02:17:45
 Time Test Ended: 09:08:00
 Interval: **4486.00 ft (KB) To 4550.00 ft (KB) (TVD)**
 Total Depth: 4550.00 ft (KB) (TVD)
 Hole Diameter: 7.88 inches Hole Condition: Good
 Test Type: Conventional Bottom Hole (Reset)
 Tester: Bradley Walter
 Unit No: 53
 Reference Elevations: 2786.00 ft (KB)
 2776.00 ft (CF)
 KB to GR/CF: 10.00 ft

Serial #: 8522 Inside
 Press@RunDepth: psig @ 4488.00 ft (KB) Capacity: 8000.00 psig
 Start Date: 2012.02.24 End Date: 2012.02.25 Last Calib.: 2012.02.25
 Start Time: 23:28:05 End Time: 09:09:45 Time On Btm:
 Time Off Btm:

TEST COMMENT: IF: BOB @ 11/2 min.
 IS: BOB @ 15 min.
 FF: BOB @ 5 minutes.
 FS: 8" return, died @ 50 min.



PRESSURE SUMMARY			
Time (Min.)	Pressure (psig)	Temp (deg F)	Annotation

Recovery		
Length (ft)	Description	Volume (bbl)
120.00	gocm 35g 30o 35m	1.19
1370.00	gsmco 30g 3m 67o	13.63
0.00	860' GIP	0.00

* Recovery from multiple tests

Gas Rates			
	Choke (inches)	Pressure (psig)	Gas Rate (Mcf/d)



**TRILOBITE
TESTING, INC.**

DRILL STEM TEST REPORT

FLUID SUMMARY

O'Brien Resources, LLC

36 17s 29w Lane, Ks

PO Box 6149
Shreveport, La 71136

Boomhower # 36-2

Job Ticket: 44507

DST#: 5

ATTN: Kurt Talbott

Test Start: 2012.02.24 @ 23:28:00

Mud and Cushion Information

Mud Type: Gel Chem

Cushion Type:

Oil API:

37 deg API

Mud Weight: 9.00 lb/gal

Cushion Length:

ft

Water Salinity:

0 ppm

Viscosity: 47.00 sec/qt

Cushion Volume:

bbbl

Water Loss: 6.00 in³

Gas Cushion Type:

Resistivity: ohm.m

Gas Cushion Pressure:

psig

Salinity: 2200.00 ppm

Filter Cake: 1.00 inches

Recovery Information

Recovery Table

Length ft	Description	Volume bbl
120.00	gocm 35g 30o 35m	1.194
1370.00	gsmco 30g 3m 67o	13.628
0.00	860' GIP	0.000

Total Length: 1490.00 ft Total Volume: 14.822 bbl

Num Fluid Samples: 0

Num Gas Bombs: 0

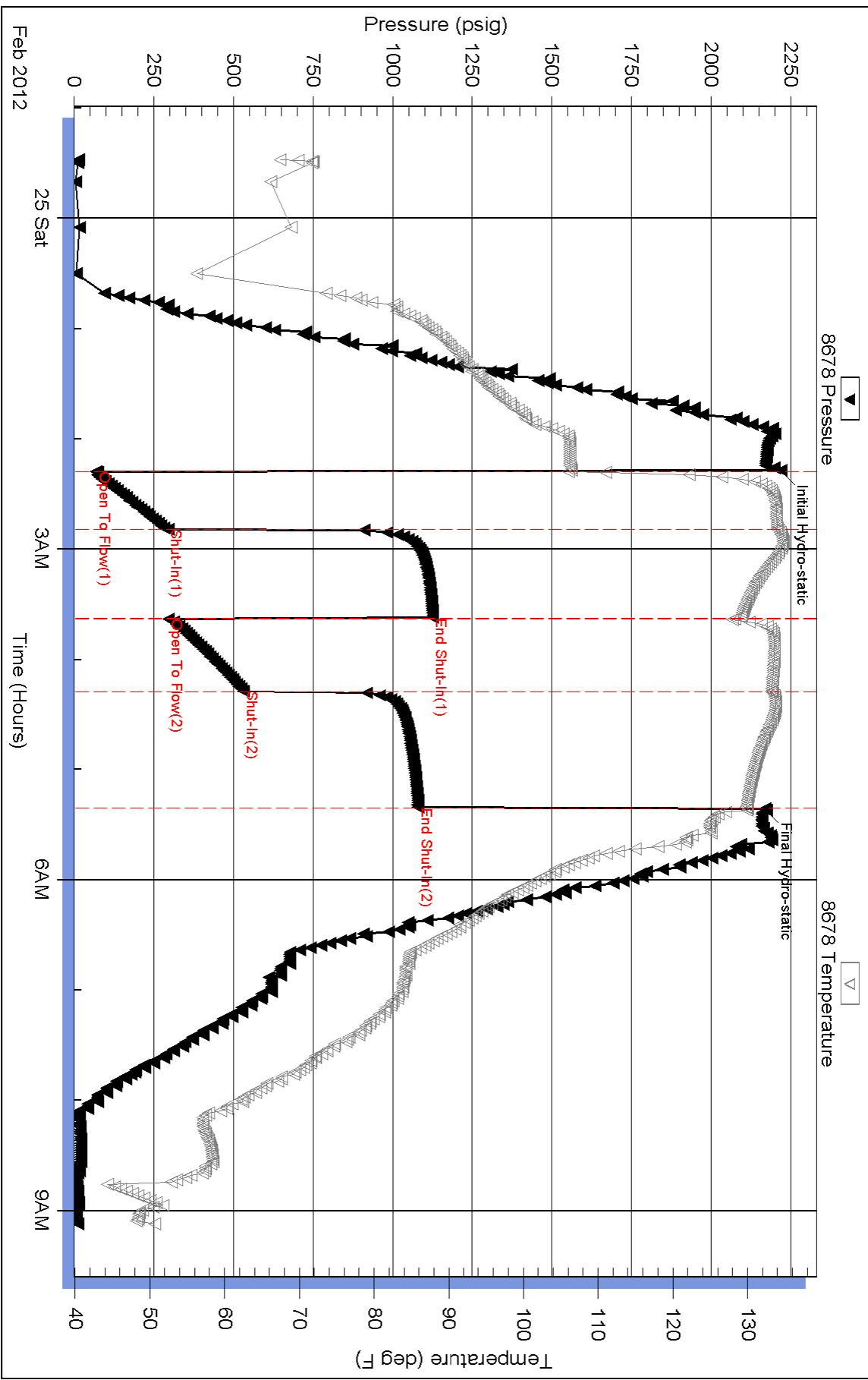
Serial #:

Laboratory Name:

Laboratory Location:

Recovery Comments:

Pressure vs. Time



Serial #: 8522

Inside

O'Brien Resources, LLC

Boorhower # 36-2

DST Test Number: 5

