



TRILOBITE TESTING, INC.

DRILL STEM TEST REPORT

O'Brien Resources, LLC

36 17s 29w Lane, Ks

PO Box 6149
Shreveport, La 71136

Boomhower # 36-2

Job Ticket: 44508

DST#: 6

ATTN: Kurt Talbott

Test Start: 2012.02.25 @ 23:59:00

GENERAL INFORMATION:

Formation: **Spurgen**

Deviated: No Whipstock: ft (KB)

Time Tool Opened: 02:52:30

Time Test Ended: 09:09:15

Test Type: Conventional Bottom Hole (Reset)

Tester: Bradley Walter

Unit No: 53

Interval: **4580.00 ft (KB) To 4646.00 ft (KB) (TVD)**

Reference Elevations: 2786.00 ft (KB)

Total Depth: 4646.00 ft (KB) (TVD)

2776.00 ft (CF)

Hole Diameter: 7.88 inches Hole Condition: Good

KB to GR/CF: 10.00 ft

Serial #: 8678

Inside

Press @ Run Depth: 960.10 psig @ 4583.00 ft (KB)

Capacity: 8000.00 psig

Start Date: 2012.02.25

End Date:

2012.02.26

Last Calib.:

2012.02.26

Start Time: 23:59:05

End Time:

09:09:15

Time On Btm:

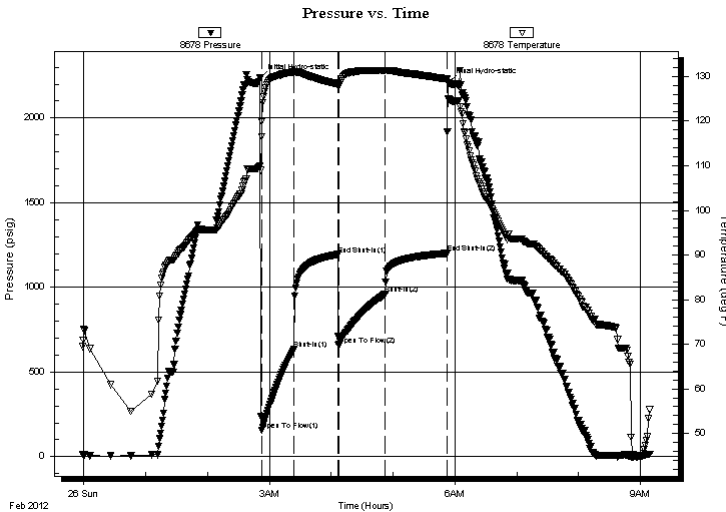
2012.02.26 @ 02:51:15

Time Off Btm:

2012.02.26 @ 05:53:45

TEST COMMENT: IF: BOB @ 1 min.
IS: No return.
FF: BOB 2 minutes.
FS: No return.

PRESSURE SUMMARY



Time (Min.)	Pressure (psig)	Temp (deg F)	Annotation
0	2235.05	109.99	Initial Hydro-static
2	156.74	116.57	Open To Flow (1)
33	633.60	130.99	Shut-In(1)
76	1194.43	128.28	End Shut-In(1)
76	659.06	127.92	Open To Flow (2)
122	960.10	131.28	Shut-In(2)
182	1200.94	129.43	End Shut-In(2)
183	2206.82	125.10	Final Hydro-static

Recovery

Length (ft)	Description	Volume (bbl)
620.00	somcw 1o 15m 84w	6.17
1430.00	smocw 5m 5o 90w	14.22
80.00	oil 100o	0.80

Gas Rates

	Choke (inches)	Pressure (psig)	Gas Rate (Mcf/d)

* Recovery from multiple tests



**TRILOBITE
TESTING, INC.**

DRILL STEM TEST REPORT

O'Brien Resources, LLC

36 17s 29w Lane, Ks

PO Box 6149
Shreveport, La 71136

Boomhower # 36-2

Job Ticket: 44508

DST#: 6

ATTN: Kurt Talbott

Test Start: 2012.02.25 @ 23:59:00

GENERAL INFORMATION:

Formation: **Spurgen**

Deviated: No Whipstock: ft (KB)

Time Tool Opened: 02:52:30

Time Test Ended: 09:09:15

Test Type: Conventional Bottom Hole (Reset)

Tester: Bradley Walter

Unit No: 53

Interval: **4580.00 ft (KB) To 4646.00 ft (KB) (TVD)**

Reference Elevations: 2786.00 ft (KB)

Total Depth: 4646.00 ft (KB) (TVD)

2776.00 ft (CF)

Hole Diameter: 7.88 inches Hole Condition: Good

KB to GR/CF: 10.00 ft

Serial #: 8522 Inside

Press @ Run Depth: psig @ 4583.00 ft (KB)

Capacity: 8000.00 psig

Start Date: 2012.02.25 End Date: 2012.02.26

Last Calib.: 1899.12.30

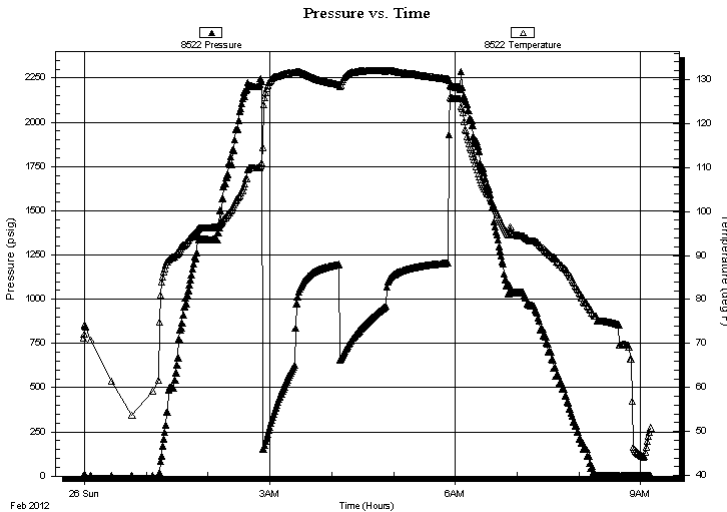
Start Time: 23:59:05 End Time: 09:10:30

Time On Btm:

Time Off Btm:

TEST COMMENT: IF: BOB @ 1 min.
IS: No return.
FF: BOB 2 minutes.
FS: No return.

PRESSURE SUMMARY



Time (Min.)	Pressure (psig)	Temp (deg F)	Annotation

Recovery

Length (ft)	Description	Volume (bbl)
620.00	somcw 1o 15m 84w	6.17
1430.00	smocw 5m 5o 90w	14.22
80.00	oil 100o	0.80

Gas Rates

	Choke (inches)	Pressure (psig)	Gas Rate (Mcf/d)

* Recovery from multiple tests



**TRILOBITE
TESTING, INC.**

DRILL STEM TEST REPORT

FLUID SUMMARY

O'Brien Resources, LLC

36 17s 29w Lane, Ks

PO Box 6149
Shreveport, La 71136

Boomer # 36-2

Job Ticket: 44508

DST#: 6

ATTN: Kurt Talbott

Test Start: 2012.02.25 @ 23:59:00

Mud and Cushion Information

Mud Type: Gel Chem

Cushion Type:

Oil API:

26 deg API

Mud Weight: 9.00 lb/gal

Cushion Length:

ft

Water Salinity:

47000 ppm

Viscosity: 40.00 sec/qt

Cushion Volume:

bbbl

Water Loss: 4.80 in³

Gas Cushion Type:

Resistivity: ohm.m

Gas Cushion Pressure:

psig

Salinity: 1500.00 ppm

Filter Cake: 1.00 inches

Recovery Information

Recovery Table

Length ft	Description	Volume bbl
620.00	somcw 1o 15m 84w	6.167
1430.00	smocw 5m 5o 90w	14.225
80.00	oil 100o	0.796

Total Length: 2130.00 ft Total Volume: 21.188 bbl

Num Fluid Samples: 0

Num Gas Bombs: 0

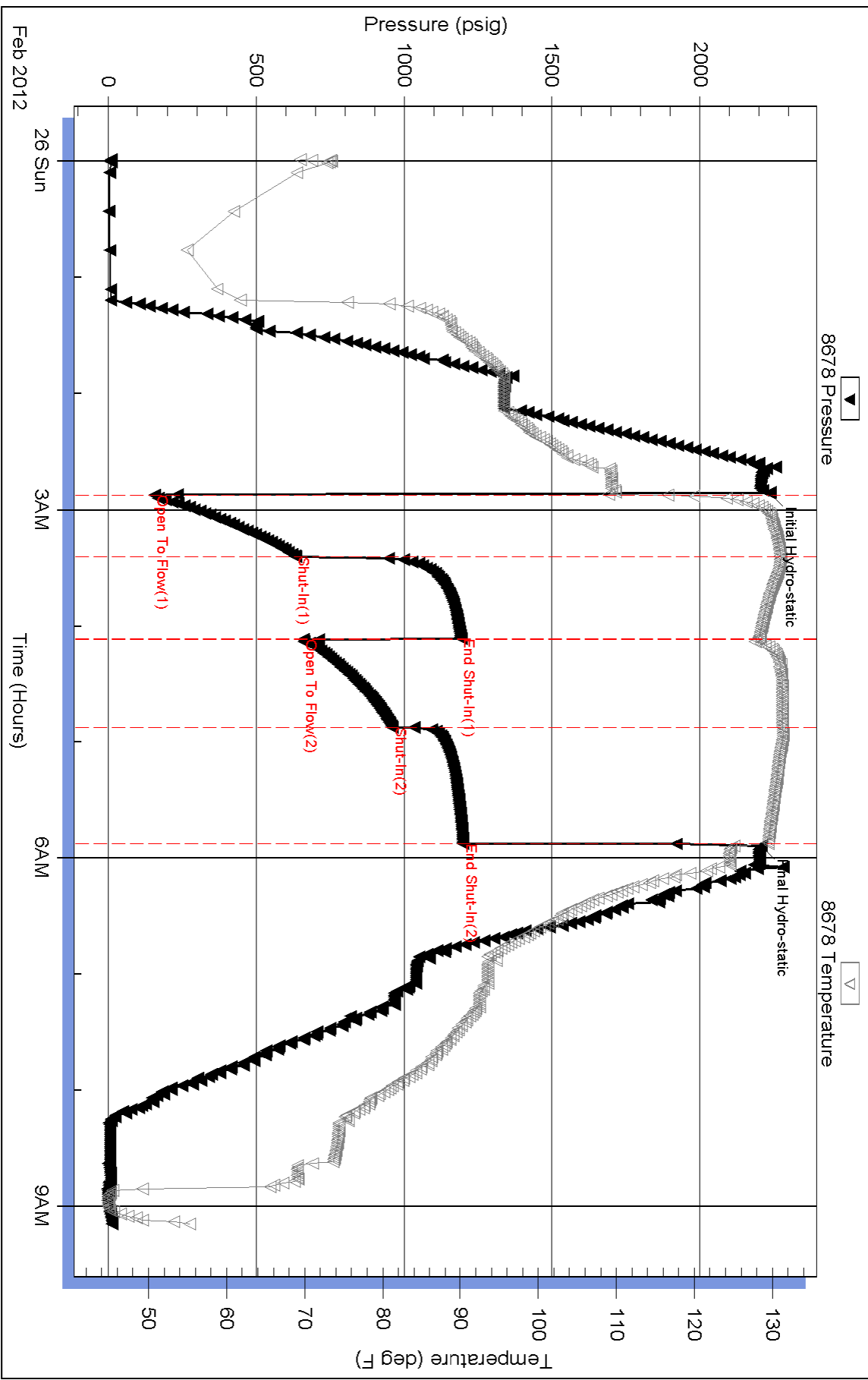
Serial #:

Laboratory Name:

Laboratory Location:

Recovery Comments: rw is .220 @ 52f = 47,000ppm

Pressure vs. Time



Serial #: 8522

Inside

O'Brien Resources, LLC

Boorhower # 36-2

DST Test Number: 6

