



TRILOBITE TESTING, INC.

DRILL STEM TEST REPORT

Berexco LLC
 2020 North Bramblewood
 Wichita Ks 67206
 ATTN: Bruce Meyer

31-14s-14w Russell
Solbach North #4
 Job Ticket: 46259 **DST#: 4**
 Test Start: 2012.03.03 @ 10:05:53

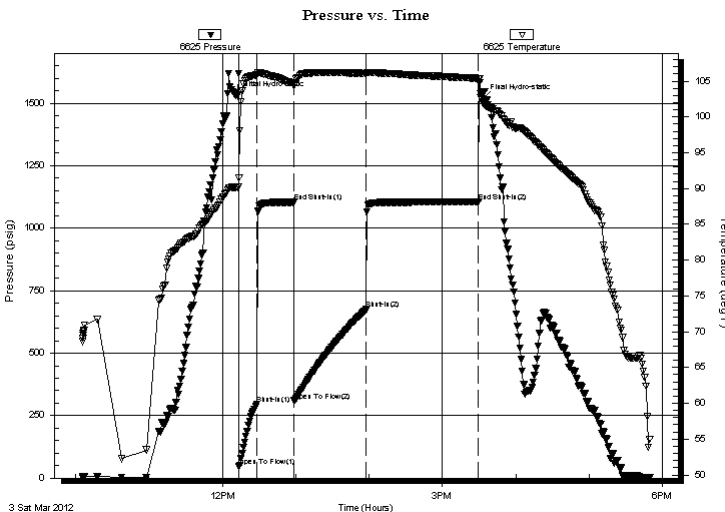
GENERAL INFORMATION:

Formation: **Arbuckle**
 Deviated: No Whipstock: ft (KB)
 Time Tool Opened: 12:13:48
 Time Test Ended: 17:49:47
 Interval: **3200.00 ft (KB) To 3205.00 ft (KB) (TVD)**
 Total Depth: 3205.00 ft (KB) (TVD)
 Hole Diameter: 7.85 inches Hole Condition: Fair
 Test Type: Conventional Bottom Hole (Reset)
 Tester: Ray Schwager
 Unit No: 42
 Reference Elevations: 1788.00 ft (KB)
 1777.00 ft (CF)
 KB to GR/CF: 11.00 ft

Serial #: 6625 Inside
 Press@RunDepth: 674.91 psig @ 3201.00 ft (KB) Capacity: 8000.00 psig
 Start Date: 2012.03.03 End Date: 2012.03.03 Last Calib.: 2012.03.03
 Start Time: 10:05:53 End Time: 17:49:47 Time On Btm: 2012.03.03 @ 12:11:18
 Time Off Btm: 2012.03.03 @ 15:33:17

TEST COMMENT: 15-IFP-strg bl in 2min
 30-ISIP-2 1/2"bl bk
 60-FFP-strg bl in 2min
 90-FSIP-1"bl bk

PRESSURE SUMMARY



Time (Min.)	Pressure (psig)	Temp (deg F)	Annotation
0	1531.51	90.17	Initial Hydro-static
3	46.19	91.48	Open To Flow (1)
17	295.82	105.89	Shut-In(1)
47	1103.89	104.69	End Shut-In(1)
48	309.51	104.38	Open To Flow (2)
107	674.91	106.09	Shut-In(2)
198	1104.69	105.38	End Shut-In(2)
202	1519.31	101.83	Final Hydro-static

Recovery

Length (ft)	Description	Volume (bbl)
0.00	180'GIP	0.00
1140.00	Water	11.10
120.00	OCMW 5%O5%M90%W	1.68
90.00	OCMW 10%O20%M70%W	1.26
90.00	CO	1.26

* Recovery from multiple tests

Gas Rates

Choke (inches)	Pressure (psig)	Gas Rate (Mcf/d)



**TRILOBITE
TESTING, INC.**

DRILL STEM TEST REPORT

Berexco LLC
2020 North Bramblewood
Wichita Ks 67206
ATTN: Bruce Meyer

31-14s-14w Russell
Solbach North #4
Job Ticket: 46259 **DST#: 4**
Test Start: 2012.03.03 @ 10:05:53

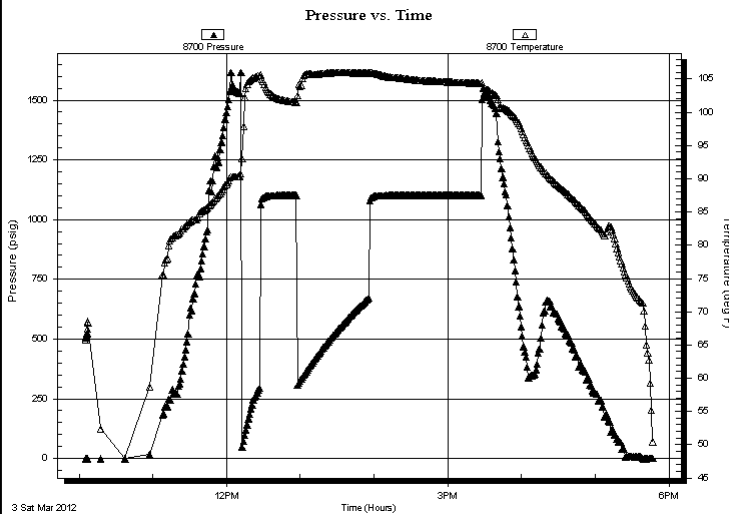
GENERAL INFORMATION:

Formation: Arbuckle			
Deviated: No Whipstock:	ft (KB)	Test Type: Conventional Bottom Hole (Reset)	
Time Tool Opened: 12:13:48		Tester: Ray Schwager	
Time Test Ended: 17:49:47		Unit No: 42	
Interval: 3200.00 ft (KB) To 3205.00 ft (KB) (TVD)		Reference Elevations: 1788.00 ft (KB)	
Total Depth: 3205.00 ft (KB) (TVD)		1777.00 ft (CF)	
Hole Diameter: 7.85 inches	Hole Condition: Fair	KB to GR/CF: 11.00 ft	

Serial #: 8700 Outside

Press @ RunDepth:	psig @ 3201.00 ft (KB)	Capacity:	8000.00 psig
Start Date:	2012.03.03	End Date:	2012.03.03
Start Time:	10:05:19	End Time:	17:47:13
		Last Calib.:	2012.03.03
		Time On Btm:	
		Time Off Btm:	

TEST COMMENT: 15-IFP-strg bl in 2min
30-ISIP-2 1/2"bl bk
60-FFP-strg bl in 2min
90-FSIP-1"bl bk



PRESSURE SUMMARY

Time (Min.)	Pressure (psig)	Temp (deg F)	Annotation

Recovery

Length (ft)	Description	Volume (bbl)
0.00	180'GIP	0.00
1140.00	Water	11.10
120.00	OCMW 5%O5%M90%W	1.68
90.00	OCMW 10%O20%M70%W	1.26
90.00	CO	1.26

Gas Rates

	Choke (inches)	Pressure (psig)	Gas Rate (Mcf/d)

* Recovery from multiple tests



**TRILOBITE
TESTING, INC.**

DRILL STEM TEST REPORT

FLUID SUMMARY

Berexco LLC
2020 North Bramblewood
Wichita Ks 67206
ATTN: Bruce Meyer

31-14s-14w Russell
Solbach North #4
Job Ticket: 46259 **DST#: 4**
Test Start: 2012.03.03 @ 10:05:53

Mud and Cushion Information

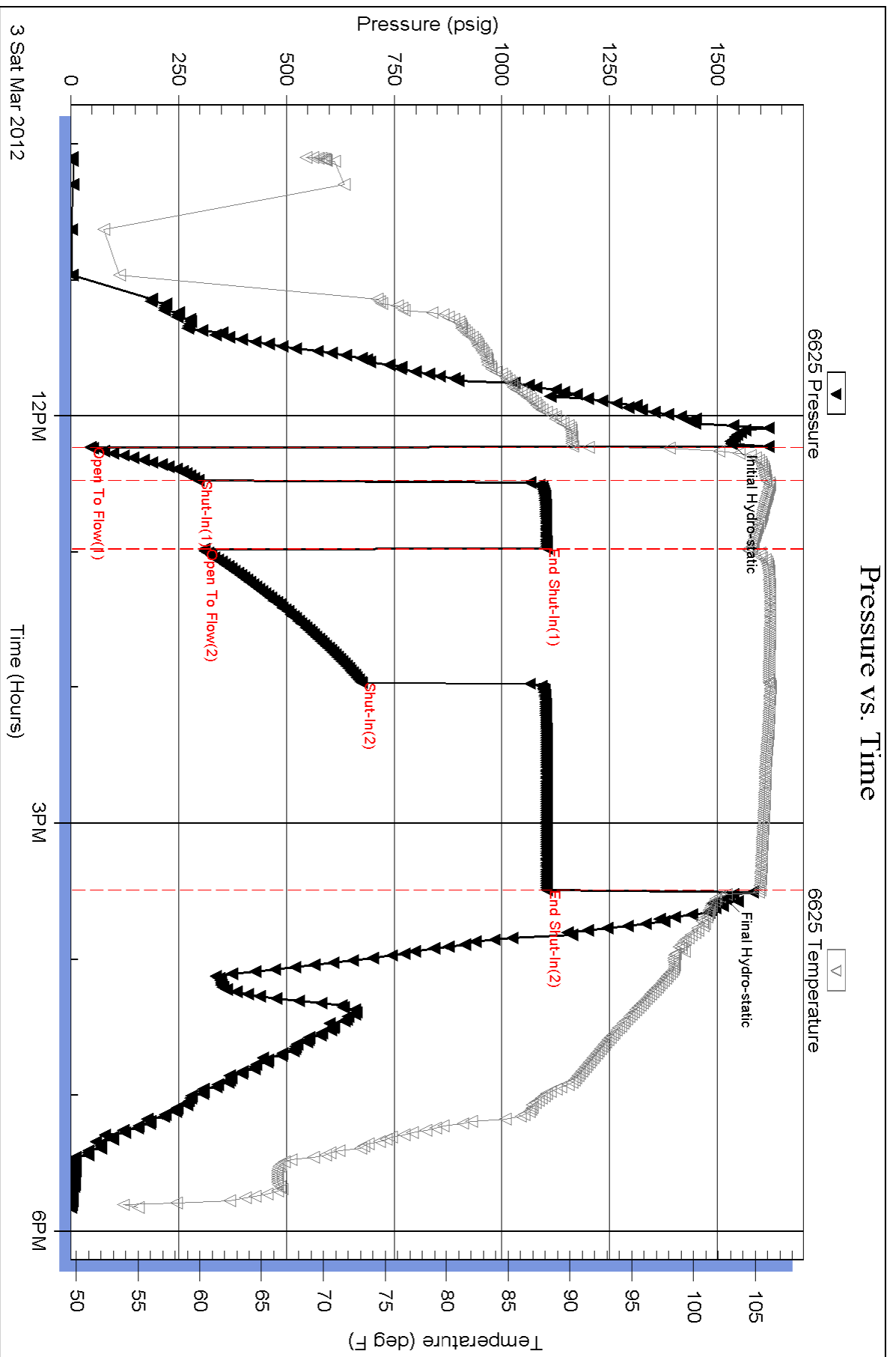
Mud Type: Gel Chem	Cushion Type:	Oil API: 28 deg API
Mud Weight: 9.00 lb/gal	Cushion Length: ft	Water Salinity: 26000 ppm
Viscosity: 62.00 sec/qt	Cushion Volume: bbl	
Water Loss: 8.76 in ³	Gas Cushion Type:	
Resistivity: ohm.m	Gas Cushion Pressure: psig	
Salinity: 6800.00 ppm		
Filter Cake: 1.00 inches		

Recovery Information

Recovery Table

Length ft	Description	Volume bbl
0.00	180'GIP	0.000
1140.00	Water	11.099
120.00	OCMW 5%O5%M90%W	1.683
90.00	OCMW 10%O20%M70%W	1.262
90.00	CO	1.262

Total Length: 1440.00 ft Total Volume: 15.306 bbl
 Num Fluid Samples: 0 Num Gas Bombs: 0 Serial #:
 Laboratory Name: Laboratory Location:
 Recovery Comments: RW .31@59F



Serial #: 8700

Outside Berexco LLC

Solbach North #4

DST Test Number: 4

