



## DRILL STEM TEST REPORT

Prepared For: **F.G.Holl Company L.L.C.**

9431 East Central Suite 100  
Wichita, Kansas 67206-2563

ATTN: Rene Husted

### **Bell "A" #1-7**

#### **7-30s-13w Barber**

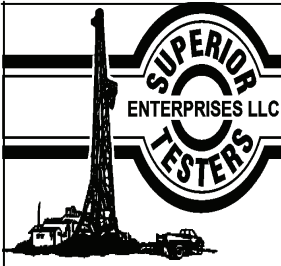
Start Date: 2012.02.08 @ 00:00:00

End Date: 2012.02.08 @ 00:00:00

Job Ticket #: 15856                      DST #: 1

Superior Testers Enterprises LLC  
PO Box 138 Great Bend KS 67530  
1-800-792-6902

Printed: 2012.02.08 @ 06:41:46



# DRILL STEM TEST REPORT

F.G.Holl Company L.L.C.

**7-30s-13w Barber**

9431 East Central Suite 100  
Wichita, Kansas 67206-2563

**Bell "A" #1-7**

Job Ticket: 15856

**DST#: 1**

ATTN: Rene Husted

Test Start: 2012.02.08 @ 00:00:00

## GENERAL INFORMATION:

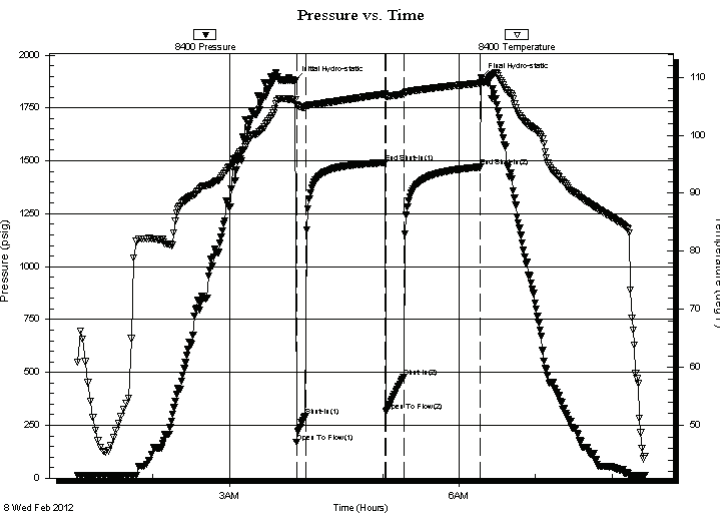
Formation: **Douglas**  
 Deviated: No Whipstock: ft (KB)  
 Time Tool Opened: 00:00:00  
 Time Test Ended: 00:00:00  
 Interval: **3763.00 ft (KB) To 3833.00 ft (KB) (TVD)**  
 Total Depth: 3833.00 ft (KB) (TVD)  
 Hole Diameter: 7.88 inches Hole Condition: Fair  
 Test Type: Conventional Bottom Hole (Initial)  
 Tester: Gene Budig  
 Unit No: 3335-  
 Reference Elevations: 1855.00 ft (KB)  
 1842.00 ft (CF)  
 KB to GR/CF: 13.00 ft

## Serial #: 8400

Inside

Press@RunDepth: 1470.17 psig @ 3828.83 ft (KB) Capacity: 5000.00 psig  
 Start Date: 2012.02.08 End Date: 2012.02.08 Last Calib.: 2012.02.08  
 Start Time: 01:00:00 End Time: 08:26:00 Time On Btm: 2012.02.08 @ 03:51:30  
 Time Off Btm: 2012.02.08 @ 06:17:30

**TEST COMMENT:** 1st Opening 5 Minutes-Good blow built to the bottom of a 5 gallon bucket in 4 minutes  
 1st Shut-In 60 Minutes-No blow back  
 2nd Opening 15 Minutes-Good Blow built to the bottom of a 5 gallon bucket in 6 minutes  
 2nd Shut-In 60 Minutes-No blow back



## PRESSURE SUMMARY

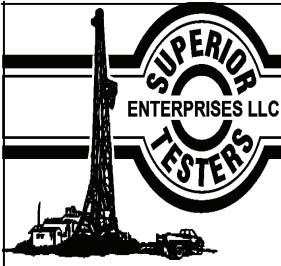
Time (Min.)	Pressure (psig)	Temp (deg F)	Annotation
0	1880.08	106.14	Initial Hydro-static
1	169.89	105.18	Open To Flow (1)
8	293.48	104.80	Shut-In(1)
71	1491.20	107.11	End Shut-In(1)
71	314.92	106.66	Open To Flow (2)
85	478.44	107.09	Shut-In(2)
145	1470.17	108.98	End Shut-In(2)
146	1891.83	109.10	Final Hydro-static

## Recovery

Length (ft)	Description	Volume (bbl)
80.00	Drilling Mud	0.39
240.00	Muddy Water	2.46
0.00	30% Mud 70% Water	0.00
240.00	Slightly Muddy Water	3.37
0.00	10% Mud 90% Water	0.00
240.00	Water 5% Mud 95% Water	3.37

## Gas Rates

Choke (inches)	Pressure (psig)	Gas Rate (Mcf/d)



# DRILL STEM TEST REPORT

F.G.Holl Company L.L.C.

**7-30s-13w Barber**

9431 East Central Suite 100  
Wichita, Kansas 67206-2563

**Bell "A" #1-7**

Job Ticket: 15856

**DST#: 1**

ATTN: Rene Husted

Test Start: 2012.02.08 @ 00:00:00

## GENERAL INFORMATION:

Formation: **Douglas**

Deviated: No Whipstock: ft (KB)

Time Tool Opened: 00:00:00

Time Test Ended: 00:00:00

Test Type: Conventional Bottom Hole (Initial)

Tester: Gene Budig

Unit No: 3335-

**Interval: 3763.00 ft (KB) To 3833.00 ft (KB) (TVD)**

Reference Elevations: 1855.00 ft (KB)

Total Depth: 3833.00 ft (KB) (TVD)

1842.00 ft (CF)

Hole Diameter: 7.88 inches Hole Condition: Fair

KB to GR/CF: 13.00 ft

**Serial #: 9405 Outside**

Press@RunDepth: 1469.05 psig @ 3829.83 ft (KB)

Capacity: 5000.00 psig

Start Date: 2012.02.08

End Date: 2012.02.08

Last Calib.: 2012.02.08

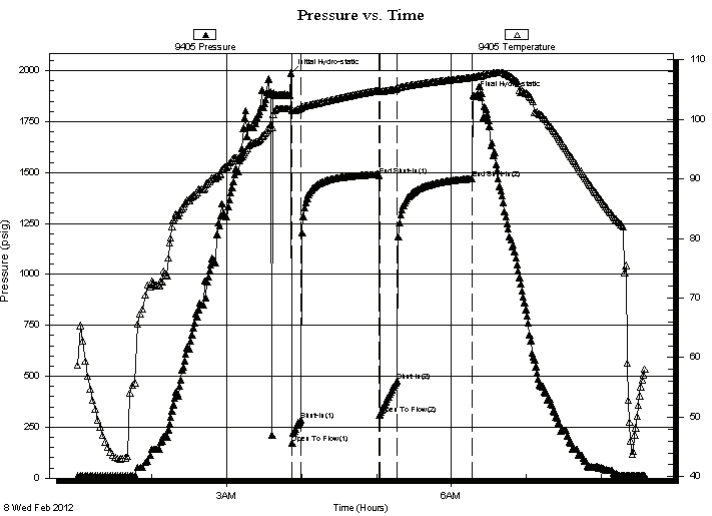
Start Time: 01:00:00

End Time: 08:35:00

Time On Btm: 2012.02.08 @ 03:51:30

Time Off Btm: 2012.02.08 @ 06:17:30

**TEST COMMENT:** 1st Opening 5 Minutes-Good blow built to the bottom of a 5 gallon bucket in 4 minutes  
1st Shut-In 60 Minutes-No blow back  
2nd Opening 15 Minutes-Good Blow built to the bottom of a 5 gallon bucket in 6 minutes  
2nd Shut-In 60 Minutes-No blow back



## PRESSURE SUMMARY

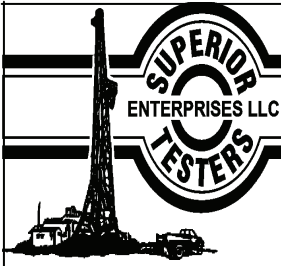
Time (Min.)	Pressure (psig)	Temp (deg F)	Annotation
0	1987.02	101.86	Initial Hydro-static
1	170.92	101.44	Open To Flow (1)
8	286.80	101.88	Shut-In(1)
71	1482.18	104.89	End Shut-In(1)
71	311.85	104.69	Open To Flow (2)
85	478.19	105.15	Shut-In(2)
145	1469.05	107.06	End Shut-In(2)
146	1876.67	107.14	Final Hydro-static

## Recovery

Length (ft)	Description	Volume (bbl)
80.00	Drilling Mud	0.39
240.00	Muddy Water	2.46
0.00	30% Mud 70% Water	0.00
240.00	Slightly Muddy Water	3.37
0.00	10% Mud 90% Water	0.00
240.00	Water 5% Mud 95% Water	3.37

## Gas Rates

Choke (inches)	Pressure (psig)	Gas Rate (Mcf/d)



# DRILL STEM TEST REPORT

**TOOL DIAGRAM**

F.G.Holl Company L.L.C.

**7-30s-13w Barber**

9431 East Central Suite 100  
Wichita, Kansas 67206-2563

**Bell "A" #1-7**

Job Ticket: 15856

**DST#: 1**

ATTN: Rene Husted

Test Start: 2012.02.08 @ 00:00:00

## Tool Information

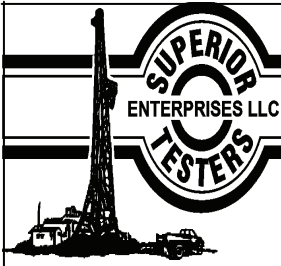
Drill Pipe:	Length: 3583.00 ft	Diameter: 3.80 inches	Volume: 50.26 bbl	Tool Weight: 2000.00 lb
Heavy Wt. Pipe:	Length: 0.00 ft	Diameter: inches	Volume: 0.00 bbl	Weight set on Packer: 20000.00 lb
Drill Collar:	Length: 180.00 ft	Diameter: 2.25 inches	Volume: 0.89 bbl	Weight to Pull Loose: 68000.00 lb
			<u>Total Volume: 51.15 bbl</u>	Tool Chased 0.00 ft
Drill Pipe Above KB:	28.00 ft			String Weight: Initial 62000.00 lb
Depth to Top Packer:	3763.00 ft			Final 62000.00 lb
Depth to Bottom Packer:	ft			
Interval between Packers:	69.83 ft			
Tool Length:	97.83 ft			
Number of Packers:	2	Diameter: 6.75 inches		

Tool Comments:

## Tool Description

Tool Description	Length (ft)	Serial No.	Position	Depth (ft)	Accum. Lengths
Shut-In Tool	5.00			3740.00	
Hydraulic Tool	5.00			3745.00	
Jars	6.00			3751.00	
Safety Joint	2.00			3753.00	
Packer	5.00			3758.00	28.00 Bottom Of Top Packer
Packer	5.00			3763.00	
Anchor	1.00			3764.00	
Change Over Sub	0.75			3764.75	
Drill Pipe	31.33			3796.08	
Change Over Sub	0.75			3796.83	
Anchor	31.00			3827.83	
Recorder	1.00	8400	Inside	3828.83	
Recorder	1.00	9405	Outside	3829.83	
Bull Plug	3.00			3832.83	69.83 Bottom Packers & Anchor

**Total Tool Length: 97.83**



# DRILL STEM TEST REPORT

## FLUID SUMMARY

F.G.Holl Company L.L.C.

**7-30s-13w Barber**

9431 East Central Suite 100  
Wichita, Kansas 67206-2563

**Bell "A" #1-7**

Job Ticket: 15856

**DST#: 1**

ATTN: Rene Husted

Test Start: 2012.02.08 @ 00:00:00

### Mud and Cushion Information

Mud Type: Gel Chem  
Mud Weight: 9.00 lb/gal  
Viscosity: 50.00 sec/qt  
Water Loss: 8.79 in<sup>3</sup>  
Resistivity: ohm.m  
Salinity: 5700.00 ppm  
Filter Cake: 1.00 inches

Cushion Type:  
Cushion Length: ft  
Cushion Volume: bbl  
Gas Cushion Type:  
Gas Cushion Pressure: psig

Oil API: deg API  
Water Salinity: ppm

### Recovery Information

Recovery Table

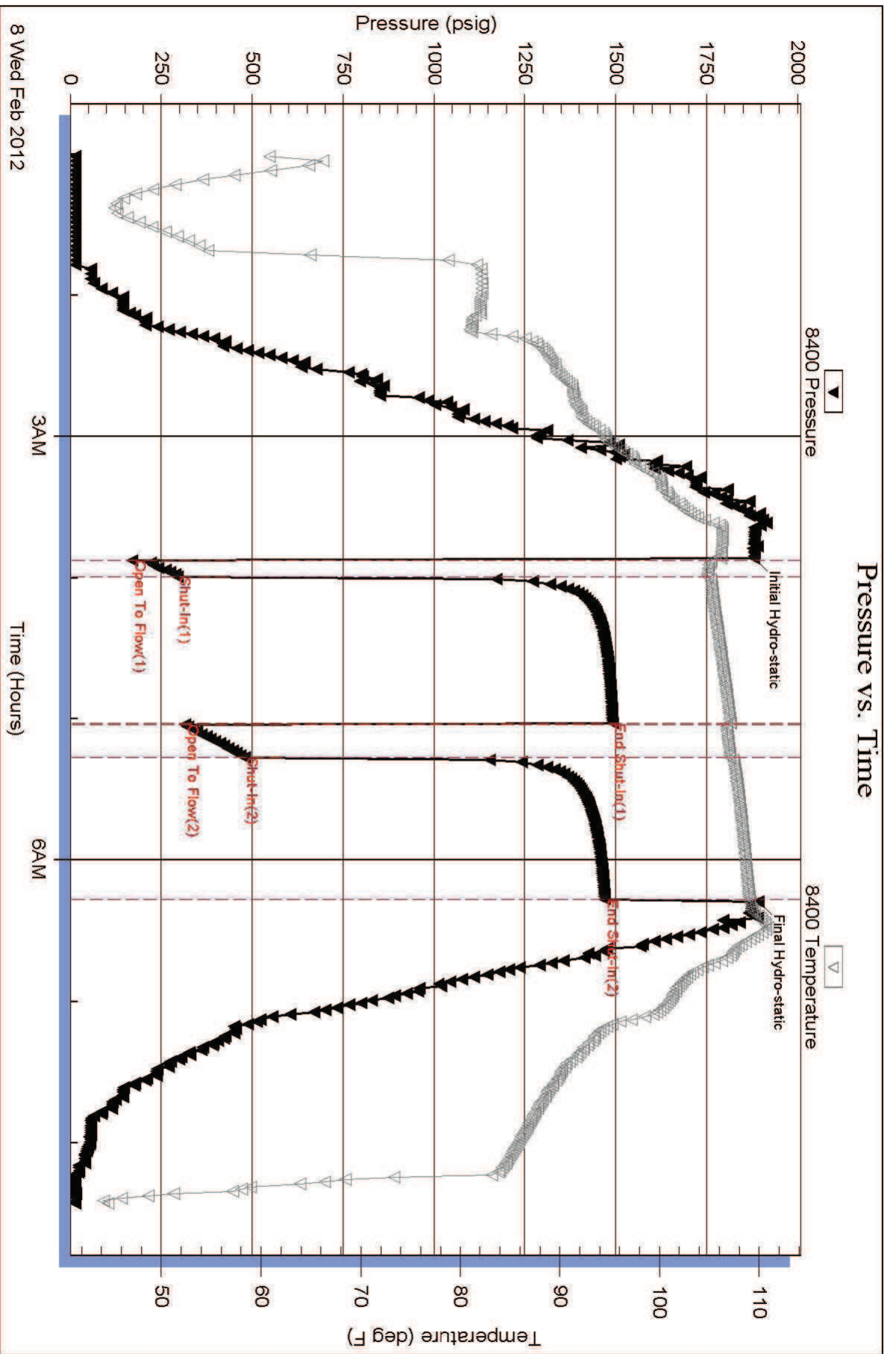
Length ft	Description	Volume bbl
80.00	Drilling Mud	0.393
240.00	Muddy Water	2.456
0.00	30% Mud 70% Water	0.000
240.00	Slightly Muddy Water	3.367
0.00	10% Mud 90% Water	0.000
240.00	Water 5% Mud 95% Water	3.367
0.00	Chlorides 92,000	0.000
0.00	Resistivity .1 @78 degrees	0.000

Total Length: 800.00 ft      Total Volume: 9.583 bbl

Num Fluid Samples: 0      Num Gas Bombs: 0      Serial #:

Laboratory Name:      Laboratory Location:

Recovery Comments:



### Pressure vs. Time

