



## DRILL STEM TEST REPORT

Prepared For: **F.G.Holl Company L.L.C.**

9431 East Central Suite 100  
Wichita, Kansas 67206-2563

ATTN: Rene Husted

**Bell "A" #1-7**

**7-30s-13w Barber**

Start Date: 2012.02.09 @ 06:30:00

End Date: 2012.02.09 @ 00:00:00

Job Ticket #: 15860                      DST #: 2

Superior Testers Enterprises LLC  
PO Box 138 Great Bend KS 67530  
1-800-792-6902

Printed: 2012.02.09 @ 22:56:06



# DRILL STEM TEST REPORT

F.G.Holl Company L.L.C.

**7-30s-13w Barber**

9431 East Central Suite 100  
Wichita, Kansas 67206-2563

**Bell "A" #1-7**

Job Ticket: 15860

**DST#: 2**

ATTN: Rene Husted

Test Start: 2012.02.09 @ 06:30:00

## GENERAL INFORMATION:

Formation: **Kansas City "I" Zone**

Deviated: No Whipstock: ft (KB)

Time Tool Opened: 00:00:00

Time Test Ended: 00:00:00

Test Type: Conventional Bottom Hole (Initial)

Tester: Gene Budig-44 Pratt

Unit No: 3335

**Interval: 4146.00 ft (KB) To 4174.00 ft (KB) (TVD)**

Reference Elevations: 1855.00 ft (KB)

Total Depth: 4174.00 ft (KB) (TVD)

1842.00 ft (CF)

Hole Diameter: 7.88 inches Hole Condition: Fair

KB to GR/CF: 13.00 ft

**Serial #: 8405 Outside**

Press @ Run Depth: 1471.19 psig @ 4171.00 ft (KB)

Capacity: 5000.00 psig

Start Date: 2012.02.09

End Date: 2012.02.09

Last Calib.: 2012.02.09

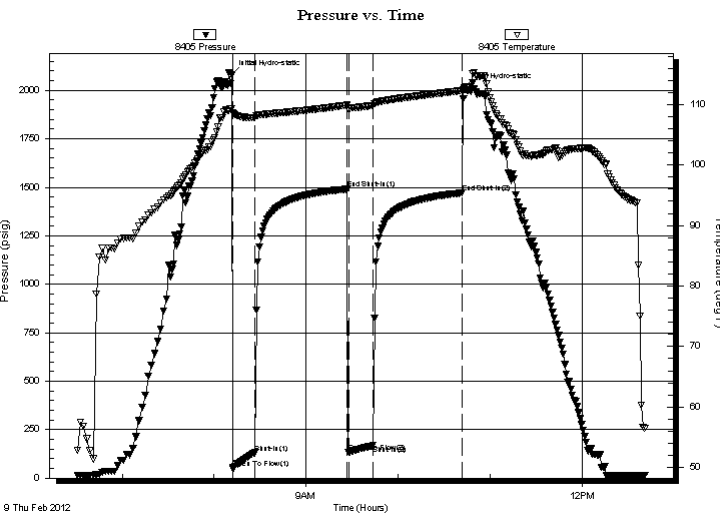
Start Time: 06:30:00

End Time: 12:41:00

Time On Btm: 2012.02.09 @ 08:11:30

Time Off Btm: 2012.02.09 @ 10:43:00

**TEST COMMENT:** 1st Opening 15 Minutes Weak building blow built to 2 1/2 inches into the water  
 1st Shut-In 60 Minutes-No blow back  
 2nd Opening 15 Minutes-Weak 1/4 inch blow through out  
 2nd Shut-In 60 Minutes-No blow back



## PRESSURE SUMMARY

Time (Min.)	Pressure (psig)	Temp (deg F)	Annotation
0	2079.42	109.32	Initial Hydro-static
1	49.08	108.56	Open To Flow (1)
15	129.81	107.80	Shut-In(1)
75	1490.32	109.90	End Shut-In(1)
76	134.35	109.43	Open To Flow (2)
92	167.63	109.86	Shut-In(2)
151	1471.19	112.31	End Shut-In(2)
152	2015.15	112.55	Final Hydro-static

## Recovery

Length (ft)	Description	Volume (bbl)
40.00	drilling mud	0.20
180.00	Muddy water	1.25
0.00	10% Mud 90% Water	0.00
0.00	Chlorides 42000 resistivity 2 @ 58 degree	0.00

## Gas Rates

	Choke (inches)	Pressure (psig)	Gas Rate (Mcf/d)



# DRILL STEM TEST REPORT

F.G.Holl Company L.L.C.

**7-30s-13w Barber**

9431 East Central Suite 100  
Wichita, Kansas 67206-2563

**Bell "A" #1-7**

Job Ticket: 15860

**DST#: 2**

ATTN: Rene Husted

Test Start: 2012.02.09 @ 06:30:00

## GENERAL INFORMATION:

Formation: **Kansas City "I" Zone**

Deviated: No Whipstock: ft (KB)

Time Tool Opened: 00:00:00

Time Test Ended: 00:00:00

Test Type: Conventional Bottom Hole (Initial)

Tester: Gene Budig-44 Pratt

Unit No: 3335

**Interval: 4146.00 ft (KB) To 4174.00 ft (KB) (TVD)**

Reference Elevations: 1855.00 ft (KB)

Total Depth: 4174.00 ft (KB) (TVD)

1842.00 ft (CF)

Hole Diameter: 7.88 inches Hole Condition: Fair

KB to GR/CF: 13.00 ft

**Serial #: 8400 Inside**

Press @ Run Depth: 1471.19 psig @ 4170.00 ft (KB)

Capacity: 5000.00 psig

Start Date: 2012.02.09 End Date: 2012.02.09

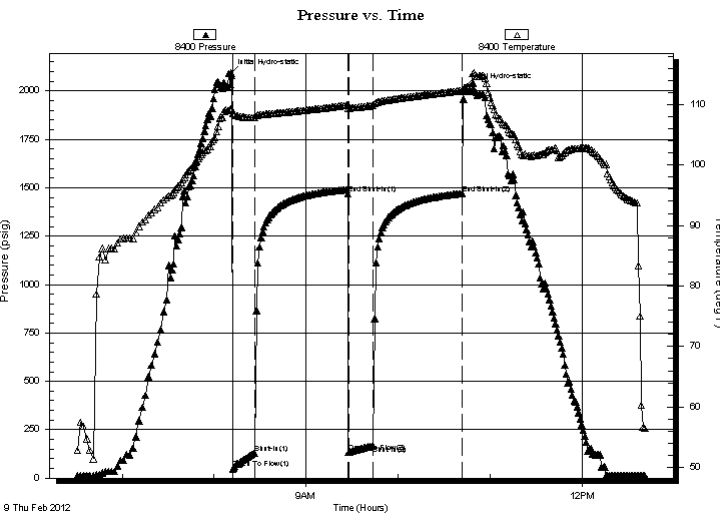
Last Calib.: 2012.02.09

Start Time: 06:30:00 End Time: 12:41:00

Time On Btm: 2012.02.09 @ 08:11:00

Time Off Btm: 2012.02.09 @ 10:43:00

**TEST COMMENT:** 1st Opening 15 Minutes Weak building blow built to 2 1/2 inches into the water  
1st Shut-In 60 Minutes-No blow back  
2nd Opening 15 Minutes-Weak 1/4 inch blow through out  
2nd Shut-In 60 Minutes-No blow back



## PRESSURE SUMMARY

Time (Min.)	Pressure (psig)	Temp (deg F)	Annotation
0	2092.16	109.38	Initial Hydro-static
1	49.08	108.56	Open To Flow (1)
16	129.81	107.80	Shut-In(1)
76	1469.02	109.90	End Shut-In(1)
77	134.35	109.43	Open To Flow (2)
93	167.63	109.86	Shut-In(2)
151	1471.19	112.31	End Shut-In(2)
152	2015.15	112.55	Final Hydro-static

## Recovery

Length (ft)	Description	Volume (bbl)
40.00	drilling mud	0.20
180.00	Muddy water	1.25
0.00	10% Mud 90% Water	0.00
0.00	Chlorides 42000 resistivity 2 @ 58 degree	0.00

## Gas Rates

	Choke (inches)	Pressure (psig)	Gas Rate (Mcf/d)



# DRILL STEM TEST REPORT

**TOOL DIAGRAM**

F.G.Holl Company L.L.C.

**7-30s-13w Barber**

9431 East Central Suite 100  
Wichita, Kansas 67206-2563

**Bell "A" #1-7**

Job Ticket: 15860

**DST#: 2**

ATTN: Rene Husted

Test Start: 2012.02.09 @ 06:30:00

## Tool Information

Drill Pipe:	Length: 3961.00 ft	Diameter: 3.80 inches	Volume: 55.56 bbl	Tool Weight: 2000.00 lb
Heavy Wt. Pipe:	Length: ft	Diameter: inches	Volume: - bbl	Weight set on Packer: 20000.00 lb
Drill Collar:	Length: 180.00 ft	Diameter: 2.25 inches	Volume: 0.89 bbl	Weight to Pull Loose: 72000.00 lb
			<u>Total Volume: - bbl</u>	Tool Chased 0.00 ft
Drill Pipe Above KB:	23.00 ft			String Weight: Initial 65000.00 lb
Depth to Top Packer:	4146.00 ft			Final 65000.00 lb
Depth to Bottom Packer:	ft			
Interval between Packers:	28.00 ft			
Tool Length:	56.00 ft			
Number of Packers:	2	Diameter: 6.75 inches		

Tool Comments:

Tool Description	Length (ft)	Serial No.	Position	Depth (ft)	Accum. Lengths
Shut-In Tool	5.00			4123.00	
Hydraulic Tool	5.00			4128.00	
Jars	6.00			4134.00	
Safety Joint	2.00			4136.00	
Packer	5.00			4141.00	28.00 Bottom Of Top Packer
Packer	5.00			4146.00	
Anchor	23.00			4169.00	
Recorder	1.00	8400	Inside	4170.00	
Recorder	1.00	8405	Outside	4171.00	
Bull Plug	3.00			4174.00	28.00 Bottom Packers & Anchor
<b>Total Tool Length:</b>	<b>56.00</b>				



# DRILL STEM TEST REPORT

## FLUID SUMMARY

F.G.Holl Company L.L.C.

**7-30s-13w Barber**

9431 East Central Suite 100  
Wichita, Kansas 67206-2563

**Bell "A" #1-7**

Job Ticket: 15860

**DST#: 2**

ATTN: Rene Husted

Test Start: 2012.02.09 @ 06:30:00

### Mud and Cushion Information

Mud Type: Gel Chem  
Mud Weight: 9.00 lb/gal  
Viscosity: 54.00 sec/qt  
Water Loss: 8.80 in<sup>3</sup>  
Resistivity: ohm.m  
Salinity: 3000.00 ppm  
Filter Cake: 1.00 inches

Cushion Type:  
Cushion Length: ft  
Cushion Volume: bbl  
Gas Cushion Type:  
Gas Cushion Pressure: psig

Oil API: deg API  
Water Salinity: ppm

### Recovery Information

Recovery Table

Length ft	Description	Volume bbl
40.00	drilling mud	0.197
180.00	Muddy water	1.250
0.00	10% Mud 90% Water	0.000
0.00	Chlorides 42000 resistivity 2 @ 58 degree	0.000

Total Length: 220.00 ft      Total Volume: 1.447 bbl

Num Fluid Samples: 0

Num Gas Bombs: 0

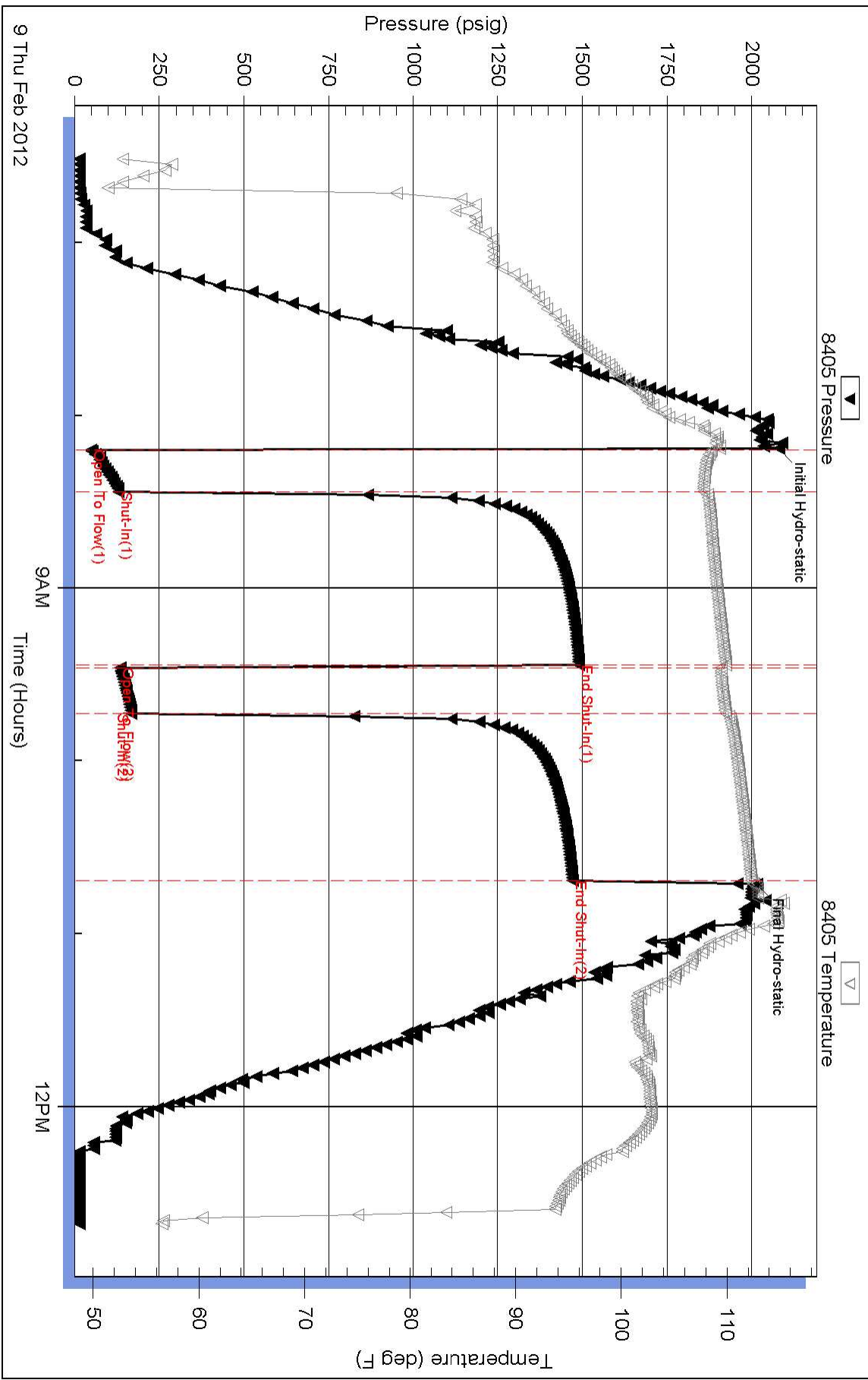
Serial #:

Laboratory Name:

Laboratory Location:

Recovery Comments:

# Pressure vs. Time



### Pressure vs. Time

