



## DRILL STEM TEST REPORT

Prepared For: **F.G.Holl Company L.L.C.**

9431 East Central Suite 100  
Wichita, Kansas 67206-2563

ATTN: Rene Husted

### **Bell "A" #1-7**

#### **7-30s-13w Barber**

Start Date: 2012.02.11 @ 10:50:00

End Date: 2012.02.11 @ 16:37:00

Job Ticket #: 15861                      DST #: 3

Superior Testers Enterprises LLC  
PO Box 138 Great Bend KS 67530  
1-800-792-6902

Printed: 2012.02.11 @ 14:49:46



# DRILL STEM TEST REPORT

F.G.Holl Company L.L.C.

**7-30s-13w Barber**

9431 East Central Suite 100  
Wichita, Kansas 67206-2563

**Bell "A" #1-7**

Job Ticket: 15861

**DST#: 3**

ATTN: Rene Husted

Test Start: 2012.02.11 @ 10:50:00

## GENERAL INFORMATION:

Formation: **Mississippi**

Deviated: No Whipstock: ft (KB)

Time Tool Opened: 13:06:30

Time Test Ended: 16:37:00

Test Type: Conventional Bottom Hole (Initial)

Tester: Dustin Ellis

Unit No: 3335-Pratt -44

**Interval: 4370.00 ft (KB) To 4438.00 ft (KB) (TVD)**

Reference Elevations: 1855.00 ft (KB)

Total Depth: 4438.00 ft (KB) (TVD)

1842.00 ft (CF)

Hole Diameter: 7.88 inches Hole Condition: Fair

KB to GR/CF: 13.00 ft

**Serial #: 8400 Inside**

Press @ Run Depth: 94.18 psig @ 4434.99 ft (KB)

Capacity: 5000.00 psig

Start Date: 2012.02.11

End Date: 2012.02.11

Last Calib.: 2012.02.11

Start Time: 10:50:00

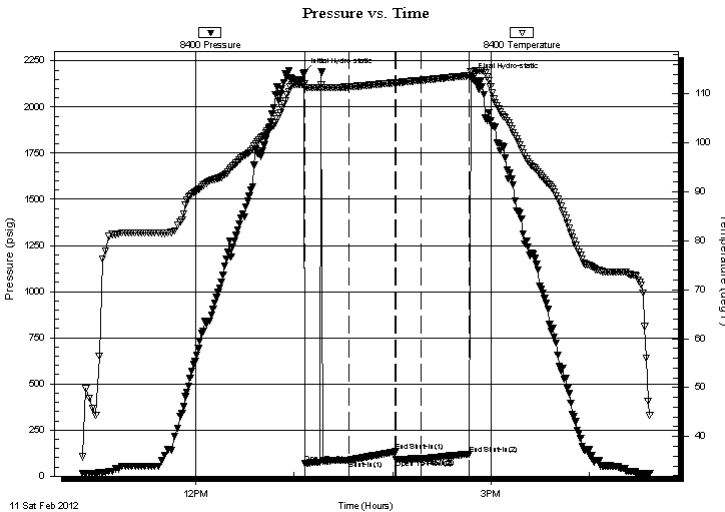
End Time: 16:37:00

Time On Btm: 2012.02.11 @ 13:06:00

Time Off Btm: 2012.02.11 @ 14:47:30

**TEST COMMENT:** 1st Open 15 minutes Weak surface blow then died off  
1st Shut in 30 minutes No blow back  
2nd Open 15 minutes Weak surface blow then died off  
2nd Shut in 30 minutes No blow back

## PRESSURE SUMMARY



Time (Min.)	Pressure (psig)	Temp (deg F)	Annotation
0	2184.70	112.00	Initial Hydro-static
1	70.46	111.30	Open To Flow (1)
28	86.98	111.41	Shut-In(1)
56	131.96	112.27	End Shut-In(1)
56	91.53	112.26	Open To Flow (2)
72	94.18	112.76	Shut-In(2)
101	120.16	113.70	End Shut-In(2)
102	2159.27	114.41	Final Hydro-static

## Recovery

Length (ft)	Description	Volume (bbl)
62.00	Drilling mud 100%	0.30

## Gas Rates

Choke (inches)	Pressure (psig)	Gas Rate (Mcf/d)



# DRILL STEM TEST REPORT

F.G.Holl Company L.L.C.

**7-30s-13w Barber**

9431 East Central Suite 100  
Wichita, Kansas 67206-2563

**Bell "A" #1-7**

Job Ticket: 15861

**DST#: 3**

ATTN: Rene Husted

Test Start: 2012.02.11 @ 10:50:00

## GENERAL INFORMATION:

Formation: **Mississippi**

Deviated: No Whipstock: ft (KB)

Time Tool Opened: 13:06:30

Time Test Ended: 16:37:00

Test Type: Conventional Bottom Hole (Initial)

Tester: Dustin Ellis

Unit No: 3335-Pratt -44

**Interval: 4370.00 ft (KB) To 4438.00 ft (KB) (TVD)**

Reference Elevations: 1855.00 ft (KB)

Total Depth: 4438.00 ft (KB) (TVD)

1842.00 ft (CF)

Hole Diameter: 7.88 inches Hole Condition: Fair

KB to GR/CF: 13.00 ft

**Serial #: 8405 Outside**

Press @ RunDepth: 119.55 psig @ 4435.99 ft (KB)

Capacity: 5000.00 psig

Start Date: 2012.02.11

End Date: 2012.02.11

Last Calib.: 2012.02.11

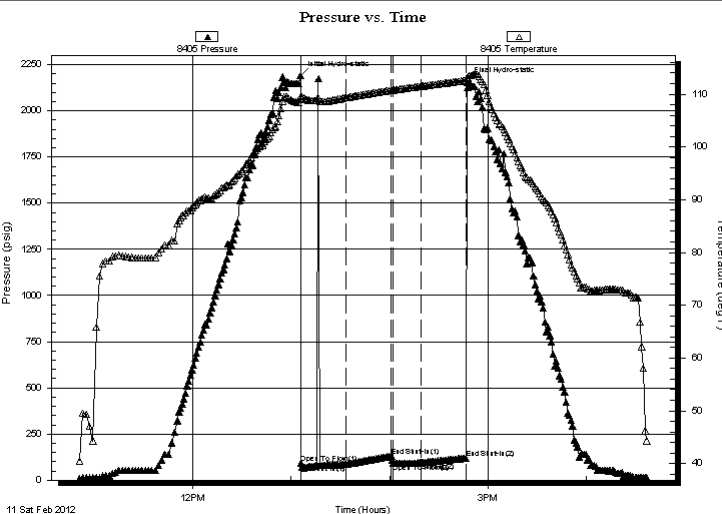
Start Time: 10:50:00

End Time: 16:37:00

Time On Btm: 2012.02.11 @ 13:05:30

Time Off Btm: 2012.02.11 @ 14:47:00

**TEST COMMENT:** 1st Open 15 minutes Weak surface blow then died off  
1st Shut in 30 minutes No blow back  
2nd Open 15 minutes Weak surface blow then died off  
2nd Shut in 30 minutes No blow back



## PRESSURE SUMMARY

Time (Min.)	Pressure (psig)	Temp (deg F)	Annotation
0	2193.30	109.49	Initial Hydro-static
1	89.57	109.22	Open To Flow (1)
28	85.81	109.33	Shut-In(1)
56	130.95	110.73	End Shut-In(1)
57	89.61	110.76	Open To Flow (2)
74	94.40	111.49	Shut-In(2)
101	119.55	112.58	End Shut-In(2)
102	2157.26	113.14	Final Hydro-static

## Recovery

Length (ft)	Description	Volume (bbl)
62.00	Drilling mud 100%	0.30

## Gas Rates

	Choke (inches)	Pressure (psig)	Gas Rate (Mcf/d)



# DRILL STEM TEST REPORT

**TOOL DIAGRAM**

F.G.Holl Company L.L.C.

**7-30s-13w Barber**

9431 East Central Suite 100  
Wichita, Kansas 67206-2563

**Bell "A" #1-7**

Job Ticket: 15861

**DST#: 3**

ATTN: Rene Husted

Test Start: 2012.02.11 @ 10:50:00

## Tool Information

Drill Pipe:	Length: 4185.00 ft	Diameter: 3.80 inches	Volume: 58.70 bbl	Tool Weight: 2000.00 lb
Heavy Wt. Pipe:	Length: 0.00 ft	Diameter: 0.00 inches	Volume: 0.00 bbl	Weight set on Packer: 20000.00 lb
Drill Collar:	Length: 180.00 ft	Diameter: 2.25 inches	Volume: 0.89 bbl	Weight to Pull Loose: 90000.00 lb
			<u>Total Volume: 59.59 bbl</u>	Tool Chased 0.00 ft
Drill Pipe Above KB:	23.00 ft			String Weight: Initial 68000.00 lb
Depth to Top Packer:	4370.00 ft			Final 68000.00 lb
Depth to Bottom Packer:	ft			
Interval between Packers:	68.99 ft			
Tool Length:	96.99 ft			
Number of Packers:	2	Diameter: 6.75 inches		

Tool Comments:

Tool Description	Length (ft)	Serial No.	Position	Depth (ft)	Accum. Lengths
------------------	-------------	------------	----------	------------	----------------

Shut-In Tool	5.00			4347.00	
Hydraulic Tool	5.00			4352.00	
Jars	6.00			4358.00	
Safety Joint	2.00			4360.00	
Packer	5.00			4365.00	28.00 Bottom Of Top Packer
Packer	5.00			4370.00	
Anchor	0.00			4370.00	
Change Over Sub	0.75			4370.75	
Drill Pipe	31.49			4402.24	
Change Over Sub	0.75			4402.99	
Anchor	31.00			4433.99	
Recorder	1.00	8400	Inside	4434.99	
Recorder	1.00	8405	Outside	4435.99	
Bull Plug	3.00			4438.99	68.99 Bottom Packers & Anchor

**Total Tool Length: 96.99**



# DRILL STEM TEST REPORT

## FLUID SUMMARY

F.G.Holl Company L.L.C.

**7-30s-13w Barber**

9431 East Central Suite 100  
Wichita, Kansas 67206-2563

**Bell "A" #1-7**

Job Ticket: 15861

**DST#: 3**

ATTN: Rene Husted

Test Start: 2012.02.11 @ 10:50:00

### Mud and Cushion Information

Mud Type: Gel Chem  
Mud Weight: 9.00 lb/gal  
Viscosity: 45.00 sec/qt  
Water Loss: 8.80 in<sup>3</sup>  
Resistivity: ohm.m  
Salinity: 3000.00 ppm  
Filter Cake: 1.00 inches

Cushion Type:  
Cushion Length: ft  
Cushion Volume: bbl  
Gas Cushion Type:  
Gas Cushion Pressure: psig

Oil API: deg API  
Water Salinity: ppm

### Recovery Information

Recovery Table

Length ft	Description	Volume bbl
62.00	Drilling mud 100%	0.305

Total Length: 62.00 ft      Total Volume: 0.305 bbl

Num Fluid Samples: 0

Num Gas Bombs: 0

Serial #:

Laboratory Name:

Laboratory Location:

Recovery Comments:

### Pressure vs. Time

